



787 Spreckels Ave., Manteca, CA 95336
Phone (209) 825-1921 - Fax (209) 825-7018
www.americanmodular.com

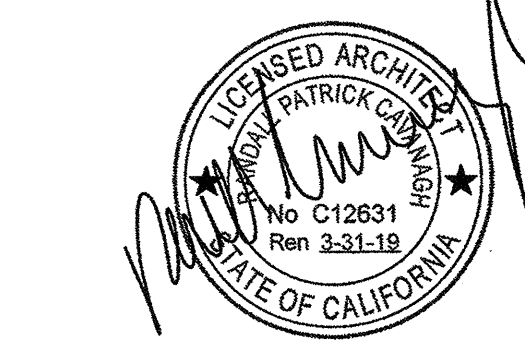
INTELLECTUAL PROPERTY & PROPRIETARY RIGHTS STATEMENT
COPYRIGHT © AMERICAN MODULAR SYSTEMS (AMS)
AMS OWNS ALL COPYRIGHT AND OTHER INTELLECTUAL PROPERTY AND PROPRIETARY RIGHTS IN THESE DRAWINGS, SPECIFICATIONS, AND THE MATERIAL CONTAINED HEREIN. CERTAIN ELEMENTS SHOWN IN THESE DOCUMENTS ARE REGISTERED TRADEMARKS OF AMS. ALL PHOTOGRAPHIC MATERIALS CONTAINED IN THESE DOCUMENTS AND ORIGINATING WITH AMS WILL REMAIN THE SOLE PROPERTY OF AMS. THESE DRAWINGS, SPECIFICATIONS, AND THE MATERIAL CONTAINED HEREIN MAY NOT BE REPRODUCED, TRANSMITTED, COPIED, DISTRIBUTED, MODIFIED, OR OTHERWISE DISPOSED OF (DIRECTLY OR INDIRECTLY) AND MAY NOT BE USED IN WHOLE OR IN PART TO ASSIST IN THE CONSTRUCTION, DESIGN, OR OTHER WORKING OF, OR FOR THE PURPOSE OF FURNISHING ANY INFORMATION FOR THE CONSTRUCTION, DESIGN, OR OTHER WORKING OF, ANY BUILDING (INDUCIAL OR OTHERWISE), DRAWINGS, SPECIFICATIONS, PRINTS, APPARATUS, OR PARTS THEREOF, EXCEPT AS EXPRESSLY PERMITTED BY WRITTEN CONSENT OF, OR IN A WRITTEN AGREEMENT WITH, AMS. SUBMITTAL OR DISTRIBUTION TO MEET OFFICIAL REGULATORY REQUIREMENTS WILL NOT BE CONSIDERED AS PUBLICATION IN VIOLATION OF AMS'S COPYRIGHT OR OTHER INTELLECTUAL PROPERTY OR PROPRIETARY RIGHTS.

PRE-CHECKED SET NAME
**24'x40' THRU 120'x40'
HIGH PITCH MODULAR
BUILDINGS**

SITE SPECIFIC PROJECT NAME

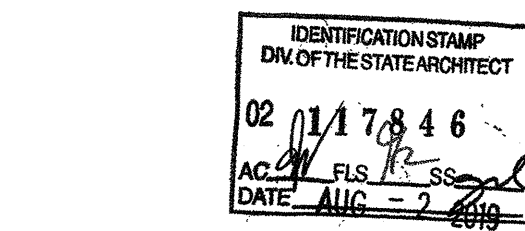
SHEET TITLE
**MECHANICAL
ROOF DETAILS**

MANUFACTURER PROFESSIONAL OF RECORD ON PC

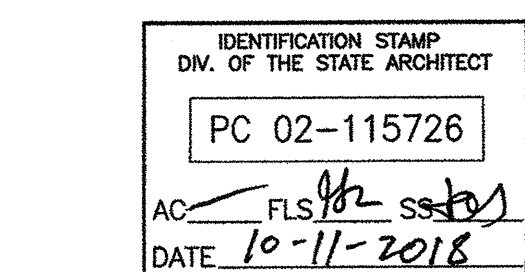


THESE DRAWINGS ARE PRELIMINARY AND NOT FOR CONSTRUCTION UNLESS STAMPED & SIGNED BY THE ENGINEER OF RECORD

PROJECT SPECIFIC STATE AGENCY APPROVAL



ORIGINAL PC STATE AGENCY APPROVAL

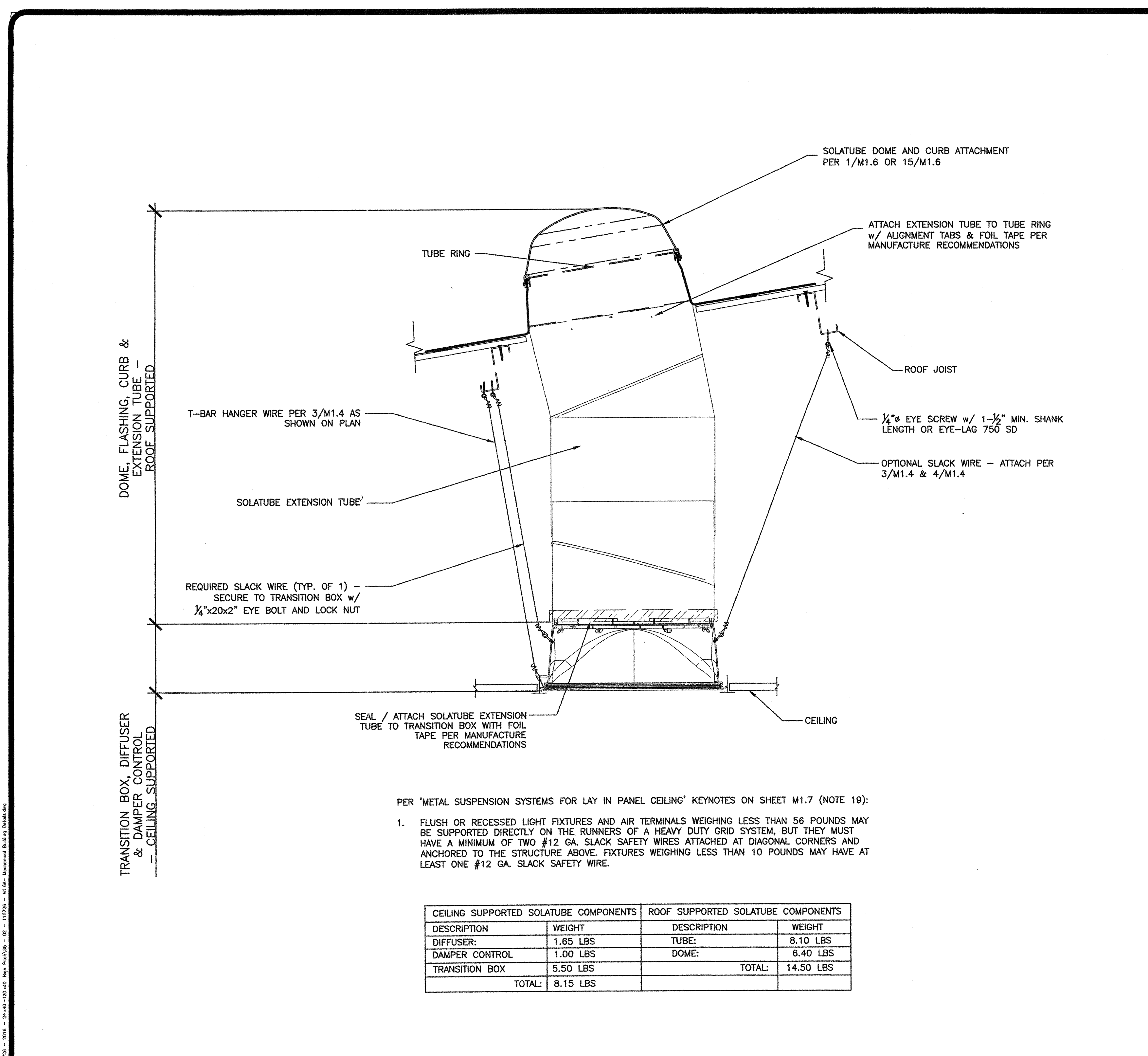


PRE-CHECK (PC) DOCUMENT
CODE 2016 CBC
A SEPARATE PROJECT APPLICATION FOR CONSTRUCTION IS REQUIRED

REVISIONS

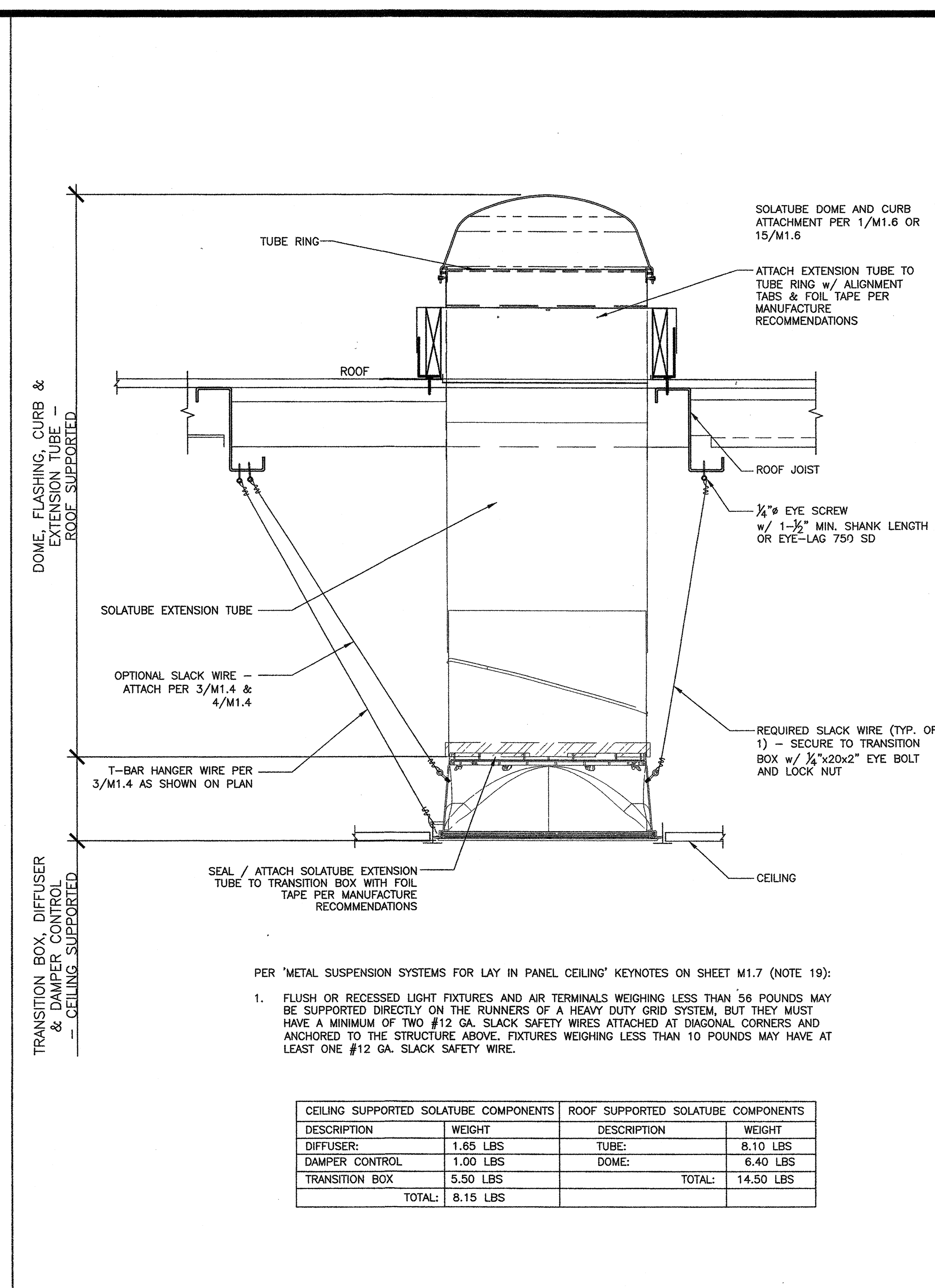
DRAWN BY: _____ AS NOTED
SCALE: _____
DATE: _____ SHEET NUMBER

M1.6A-02



PER 'METAL SUSPENSION SYSTEMS FOR LAY IN PANEL CEILING' KEYNOTES ON SHEET M1.7 (NOTE 19):
1. FLUSH OR RECESSED LIGHT FIXTURES AND AIR TERMINALS WEIGHING LESS THAN 56 POUNDS MAY BE SUPPORTED DIRECTLY ON THE RUNNERS OF A HEAVY DUTY GRID SYSTEM, BUT THEY MUST HAVE A MINIMUM OF TWO #12 GA. SLACK SAFETY WIRES ATTACHED AT DIAGONAL CORNERS AND ANCHORED TO THE STRUCTURE ABOVE. FIXTURES WEIGHING LESS THAN 10 POUNDS MAY HAVE AT LEAST ONE #12 GA. SLACK SAFETY WIRE.

CEILING SUPPORTED SOLATUBE COMPONENTS		ROOF SUPPORTED SOLATUBE COMPONENTS	
DESCRIPTION	WEIGHT	DESCRIPTION	WEIGHT
DIFFUSER:	1.65 LBS	TUBE:	8.10 LBS
DAMPER CONTROL	1.00 LBS	DOME:	6.40 LBS
TRANSITION BOX	5.50 LBS	TOTAL:	14.50 LBS
TOTAL:	8.15 LBS		



PER 'METAL SUSPENSION SYSTEMS FOR LAY IN PANEL CEILING' KEYNOTES ON SHEET M1.7 (NOTE 19):
1. FLUSH OR RECESSED LIGHT FIXTURES AND AIR TERMINALS WEIGHING LESS THAN 56 POUNDS MAY BE SUPPORTED DIRECTLY ON THE RUNNERS OF A HEAVY DUTY GRID SYSTEM, BUT THEY MUST HAVE A MINIMUM OF TWO #12 GA. SLACK SAFETY WIRES ATTACHED AT DIAGONAL CORNERS AND ANCHORED TO THE STRUCTURE ABOVE. FIXTURES WEIGHING LESS THAN 10 POUNDS MAY HAVE AT LEAST ONE #12 GA. SLACK SAFETY WIRE.

CEILING SUPPORTED SOLATUBE COMPONENTS		ROOF SUPPORTED SOLATUBE COMPONENTS	
DESCRIPTION	WEIGHT	DESCRIPTION	WEIGHT
DIFFUSER:	1.65 LBS	TUBE:	8.10 LBS
DAMPER CONTROL	1.00 LBS	DOME:	6.40 LBS
TRANSITION BOX	5.50 LBS	TOTAL:	14.50 LBS
TOTAL:	8.15 LBS		

SOLATUBE ATTACHMENT ELEVATION - SLOPED		SCALE: 1-1/2"=1'-0"	A
NOT USED	16 NOT USED	17 NOT USED	18 NOT USED

SOLATUBE ATTACHMENT ELEVATION		SCALE: 1-1/2"=1'-0"	B
NOT USED	19 NOT USED	20	