

AGENCY TRACKING NO. 63321-356  
FILE NO. 15-6

IDENTIFICATION STAMP  
DIV. OF THE STATE ARCHITECT  
OFFICE OF REGULATION SERVICES  
03-120240  
AC. *WJ* PLS. *SS* 07  
DATE: *12/2/2020*



787 Sprackels Ave., Manteca, CA 95336  
Phone (209) 825-1921 - Fax (209) 825-7018  
www.americanmodular.com

**INTELLECTUAL PROPERTY & PROPRIETARY RIGHTS STATEMENT**  
COPYRIGHT © AMERICAN MODULAR SYSTEMS (AMS).  
AMS OWNS ALL COPYRIGHT AND OTHER INTELLECTUAL-PROPERTY AND PROPRIETARY RIGHTS IN THESE DRAWINGS, SPECIFICATIONS, AND THE MATERIAL CONTAINED HEREIN. CERTAIN ELEMENTS SHOWN IN THESE DOCUMENTS ARE REGISTERED TRADEMARKS OF AMS. ALL PATENTABLE MATERIALS CONTAINED IN THESE DOCUMENTS AND PROGRAMS WITH AMS WILL REMAIN THE SOLE PROPERTY OF AMS. THESE DRAWINGS, SPECIFICATIONS, AND THE MATERIALS CONTAINED HEREIN MAY NOT BE REPRODUCED, TRANSMITTED, COPIED, DISTRIBUTED, MODIFIED, OR OTHERWISE DERIVED OF (DIRECTLY OR INDIRECTLY) AND MAY NOT BE USED (IN WHOLE OR IN PART) TO ASSIST IN THE CONSTRUCTION, DESIGN, OR OTHER DRAWING OR FOR THE PURPOSE OF FURNISHING ANY INFORMATION FOR THE CONSTRUCTION, DESIGN, OR OTHER MAKING OF ANY BUILDINGS (MODULES OR OTHERWISE), DRAWINGS, SPECIFICATIONS, PRINTS, APPARATUS, OR PARTS THEREOF, EXCEPT AS EXPRESSLY PERMITTED BY WRITTEN CONSENT OF, OR IN A WRITTEN AGREEMENT WITH, AMS. SUBMITTAL OR DISTRIBUTION TO MEET OFFICIAL REGULATORY REQUIREMENTS WILL NOT BE CONSIDERED AS PUBLICATION IN VIOLATION OF AMS'S COPYRIGHT OR OTHER INTELLECTUAL-PROPERTY OR PROPRIETARY RIGHTS.

PRE-CHECKED SET NAME

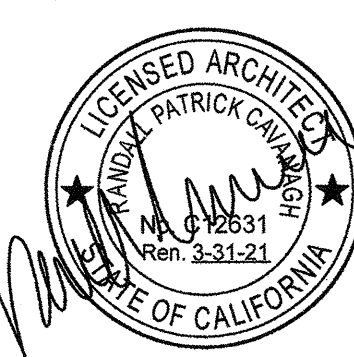
24'x40' THRU 120'x40'  
HIGH PITCH MODULAR  
BUILDINGS

SITE SPECIFIC PROJECT NAME

SHEET TITLE

TYPICAL MECHANICAL  
PLAN

MANUFACTURER PROFESSIONAL OF RECORD ON PC



THESE DRAWINGS ARE PRELIMINARY AND NOT FOR CONSTRUCTION UNLESS STAMPED & SIGNED BY THE ENGINEER OF RECORD.

PROJECT SPECIFIC STATE AGENCY APPROVAL

IDENTIFICATION STAMP  
DIV. OF THE STATE ARCHITECT  
02-117846  
AC. *WJ* PLS. *SS* 3  
DATE: *Aug-7-2019*

ORIGINAL PC STATE AGENCY APPROVAL

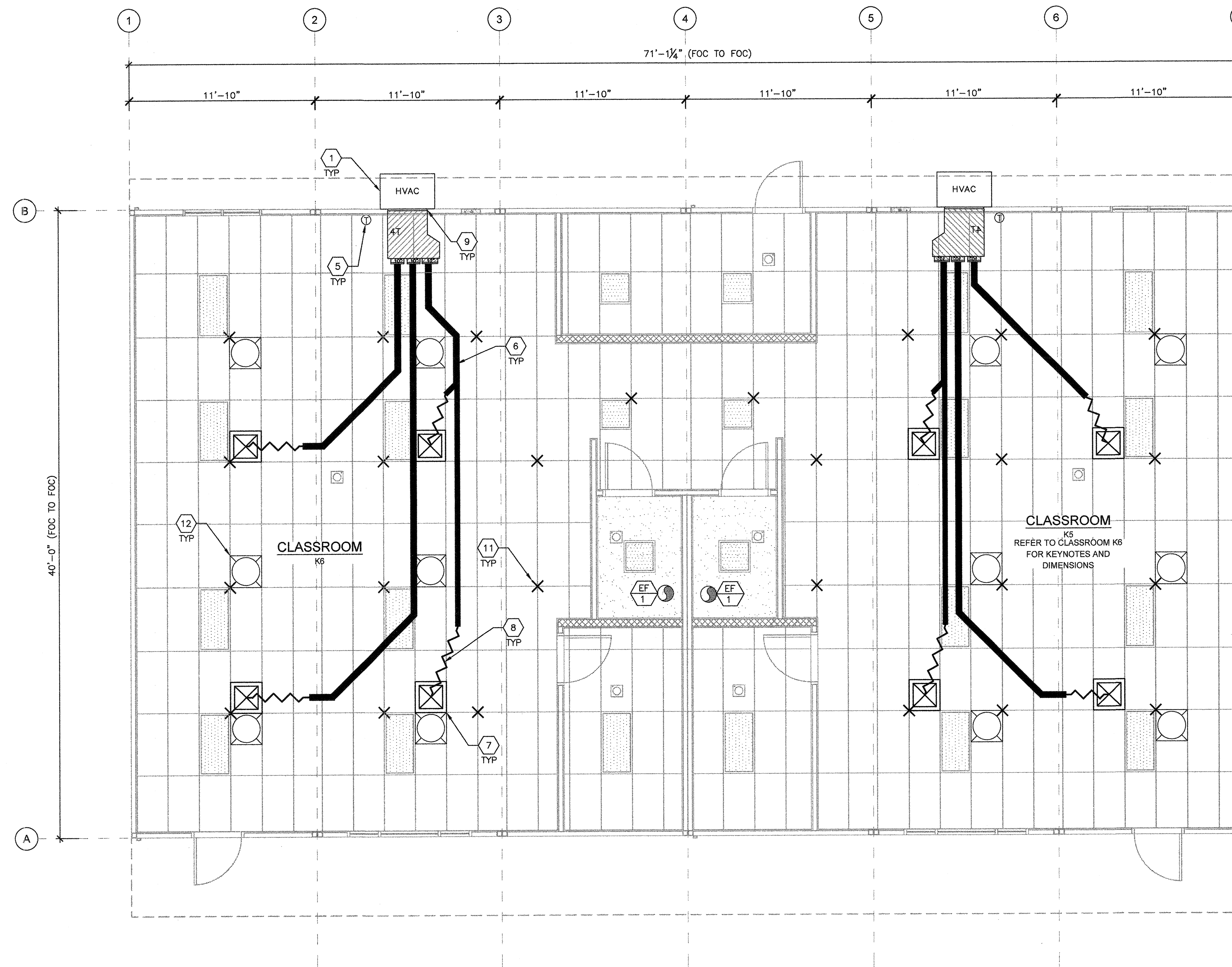
BASED ON PC# 02-115726

PRE-CHECK (PC) DOCUMENT  
CODE: 2016 CBC  
A SEPARATE PROJECT APPLICATION FOR CONSTRUCTION IS REQUIRED.

REVISIONS

DRAWN BY: AH  
SCALE: AS NOTED  
DATE: 06/20/19  
SHEET NUMBER

M1.1B-02



KINDER BUILDING 2 MECHANICAL FLOOR PLAN

SCALE: 1/4"=1'-0" 1

MARK	DESCRIPTION	CFM	WATTS	S.P.	VOLTY/PH
EF 1	EXHAUST FAN	110	47.3	.10"	120-1Ø

- NOTES:
- VENT EXHAUST FAN THROUGH ROOF.
  - FANS MUST WEIGH LESS THAN 75 LBS.

EXHAUST FAN SCHEDULE

- WHERE TWO OR MORE HVAC UNITS SERVE A COMMON SPACE, UNITS SHALL BE EQUIPPED WITH A DUCT SMOKE DETECTOR FOR AUTOMATIC SHUTDOWN, INTERCONNECT WITH FIRE ALARM SYSTEM.
- AIR-MOVING SYSTEMS SUPPLYING AIR IN EXCESS OF 2000 CUBIC FEET PER MINUTE TO ENCLOSED SPACES WITHIN THE BUILDING SHALL BE EQUIPPED WITH AN AUTOMATIC SHUTOFF.
- AUTOMATIC SHUT-OFF IS NOT REQUIRED WHEN OCCUPIED ROOMS SERVED BY THE AIR HANDLING EQUIPMENT HAVE A DIRECT EXIT TO THE EXTERIOR AND THE TRAVEL DISTANCE DOES NOT EXCEED 100 FT. (PER C.M.C. 608.1 EXCEPTION #2)
- LIGHTING FIXTURE MAY BE INSTALLED ROTATED 90° FROM SHOWN TO MATCH T-GRID.
- FOR T-BAR CEILING SPECIFICATIONS, SEE M1.7.

SHEET NOTES

- WALL HUNG HVAC UNIT - SEE 10/M1.4.
- NOT USED
- NOT USED
- NOT USED
- NOT USED
- THERMOSTAT - (N.I.C.) 48" A.F.F. MAX TO TOP OF BOX
- CONCEALED SUPPLY AIR DUCT ABOVE T-BAR CEILING - SEE 1/M1.4.
- TYPICAL 4-WAY SUPPLY AIR REGISTER LOCATION AND SIZE MAY VARY PER CEILING LAYOUT AND BUILDING SIZE - SEE 7/M1.5.
- FLEX DUCT - NOMINAL 10" MIN. (MAY VARY) - SEE 8/M1.5.
- RETURN AIR AS PART OF UNIT.
- NOT USED
- STRUT/SPLAY WIRE ASSEMBLY, SEE 2/M1.4 FOR DETAILS
- SOLA-TUBE - SEE DETAIL 1/M1.6

KEY NOTES

BUILDING SIZE (FT)	TOTAL # OF 12' WIDE MODULES	TOTAL # OF CENTER MODULES	OVERALL SIZE <sup>1</sup>
24'x40'	2	0	23'-6"
36'x40'	3	1	35'-6"
48'x40'	4	2	47'-6"
60'x40'	5	3	59'-3"
72'x40'	6	4	71'-1/4"
84'x40'	7	5	82'-1/2"
96'x40'	8	6	94'-9/8"
108'x40'	9	7	106'-8"
120'x40'	10	8	118'-6"

- NOTES:
- TOTAL BUILDING WIDTH INCLUDES 1/4" PER MODULE CONSTRUCTION TOLERANCE PER FOUNDATION SHEETS S1.0, S1.1, S1.2 & S1.3.

BUILDING SIZE SCHEDULE