



INTELLECTUAL PROPERTY & PROPRIETARY RIGHTS STATEMENT
COPYRIGHT © AMERICAN MODULAR SYSTEMS (AMS)
AMS OWNS ALL COPYRIGHT AND OTHER INTELLECTUAL PROPERTY AND PROPRIETARY RIGHTS IN THESE DRAWINGS, SPECIFICATIONS AND THE MATERIAL CONTAINED HEREIN. CERTAIN ELEMENTS SHOWN IN THESE DOCUMENTS ARE REGISTERED TRADEMARKS OF AMS. ALL PATENTABLE MATERIALS CONTAINED IN THESE DOCUMENTS AND INVENTIONS MADE BY AMS WILL REMAIN THE SOLE PROPERTY OF AMS. THESE DRAWINGS, SPECIFICATIONS, AND THE MATERIAL CONTAINED HEREIN MAY NOT BE REPRODUCED, TRANSMITTED, COPIED, DISTRIBUTED, MODIFIED, OR OTHERWISE DISPOSED OF (DIRECTLY OR INDIRECTLY) AND MAY NOT BE USED (IN WHOLE OR IN PART) TO ASSIST IN THE CONSTRUCTION, DESIGN, OR OTHER MARKING OF, OR FOR THE PURPOSE OF FURNISHING ANY INFORMATION FOR THE CONSTRUCTION DESIGN, OR OTHER MAKING OF, ANY BUILDINGS (MODULAR OR OTHERWISE), DRAWINGS, SPECIFICATIONS, PRINTS, APPARATUS, OR PARTS THEREOF, EXCEPT AS EXPRESSLY PERMITTED BY WRITTEN CONSENT OF, OR IN A WRITTEN AGREEMENT WITH, AMS. FAILURE TO OBTAIN SUCH WRITTEN CONSENT OR TO COMPLY WITH ANY SUCH AGREEMENT WILL NOT BE CONSIDERED AS PUBLICATION IN DEROGATION OF AMS' COPYRIGHT OR OTHER INTELLECTUAL PROPERTY OR PROPRIETARY RIGHTS.
PRE-CHECKED SET NAME

**24'x40' THRU 120'x40'
HIGH PITCH MODULAR
BUILDINGS**

SITE SPECIFIC PROJECT NAME

SHEET TITLE

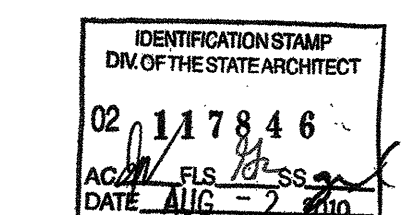
**TYPICAL MECHANICAL
PLAN**

MANUFACTURER PROFESSIONAL OF RECORD ON PC



THESE DRAWINGS ARE PRELIMINARY AND NOT FOR CONSTRUCTION UNLESS STAMPED & SIGNED BY THE ENGINEER OF RECORD.

PROJECT SPECIFIC STATE AGENCY APPROVAL



ORIGINAL PC STATE AGENCY APPROVAL

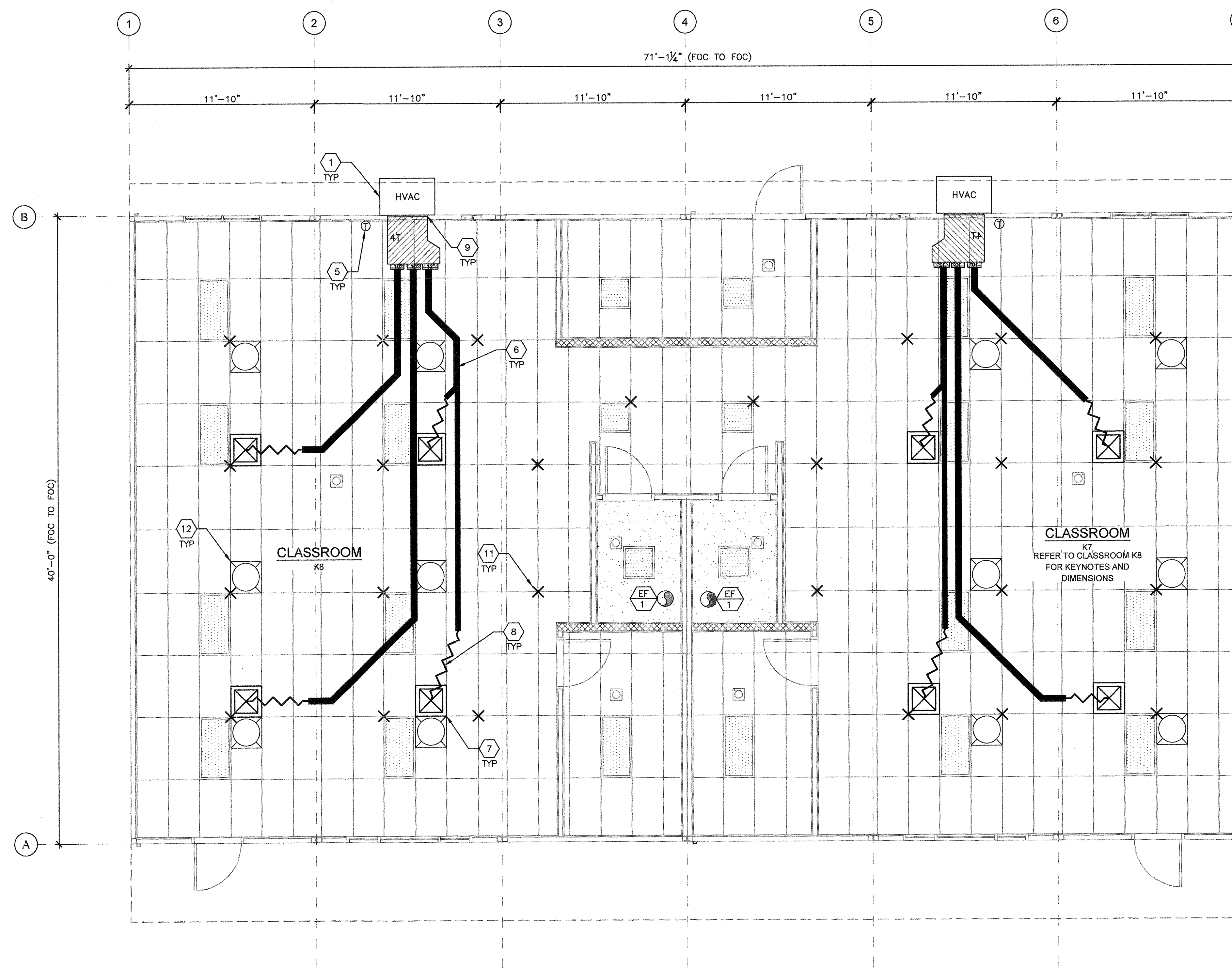
BASED ON PC# 02-115726

PRE-CHECK (PC) DOCUMENT
CODE: 2016 CBC
A SEPARATE PROJECT APPLICATION FOR CONSTRUCTION IS REQUIRED.

REVISIONS

DRAWN BY: AH
SCALE: AS NOTED
DATE: 06/20/19
SHEET NUMBER

M1.1A-02



KINDER BUILDING 1 MECHANICAL FLOOR PLAN

SCALE: 1/4"=1'-0" 1

MARK	DESCRIPTION	CFM	WATTS	S.P.	VOLT/PH	
EF 1	EXHAUST FAN	110	47.3	.10"	120-1Ø	NUTONE AN110 CEILING MOUNTED 1ØW INPUT 10 LBS (OR EQUAL)

NOTES:

- VENT EXHAUST FAN THROUGH ROOF.
- FANS MUST WEIGH LESS THAN 75 LBS.

EXHAUST FAN SCHEDULE

- WHERE TWO OR MORE HVAC UNITS SERVE A COMMON SPACE, UNITS SHALL BE EQUIPPED WITH A DUCT SMOKE DETECTOR FOR AUTOMATIC SHUTDOWN. INTERCONNECT WITH FIRE ALARM SYSTEM.
- AIR-MOVING SYSTEMS SUPPLYING AIR IN EXCESS OF 2000 CUBIC FEET PER MINUTE TO ENCLOSED SPACES WITHIN THE BUILDING SHALL BE EQUIPPED WITH AN AUTOMATIC SHUTOFF.
- AUTOMATIC SHUT-OFF IS NOT REQUIRED WHEN OCCUPIED ROOMS SERVED BY THE AIR HANDLING EQUIPMENT HAVE A DIRECT EXIT TO THE EXTERIOR AND THE TRAVEL DISTANCE DOES NOT EXCEED 100 FT. (PER C.M.C. 608.1 EXCEPTION #2.)
- LIGHTING FIXTURE MAY BE INSTALLED ROTATED 90° FROM SHOWN TO MATCH T-GRID.
- FOR T-BAR CEILING SPECIFICATIONS, SEE M1.7.

SHEET NOTES

- WALL HUNG HVAC UNIT - SEE 10/M1.4.
- NOT USED
- NOT USED
- NOT USED
- NOT USED
- THERMOSTAT - (N.I.C.) 48" A.F.F. MAX TO TOP OF BOX
- CONCEALED SUPPLY AIR DUCT ABOVE T-BAR CEILING - SEE 1/M1.4.
- TYPICAL 4-WAY SUPPLY AIR REGISTER LOCATION AND SIZE MAY VARY PER CEILING LAYOUT AND BUILDING SIZE - SEE 7/M1.5.
- FLEX DUCT - NOMINAL 10" MIN. (MAY VARY) - SEE 8/M1.5.
- RETURN AIR AS PART OF UNIT.
- NOT USED
- STRUT/SPLAY WIRE ASSEMBLY, SEE 2/M1.4 FOR DETAILS
- SOLA-TUBE - SEE DETAIL 1/M1.6

KEY NOTES

BUILDING SIZE (FT)	TOTAL # OF 12' WIDE MODULES	TOTAL # OF CENTER MODULES	OVERALL SIZE'
24'x40'	2	0	23'-8 1/2"
36'x40'	3	1	35'-6 1/2"
48'x40'	4	2	47'-4 1/2"
60'x40'	5	3	59'-3"
72'x40'	6	4	71'-1 1/2"
84'x40'	7	5	82'-1 1/2"
96'x40'	8	6	94'-9 1/2"
108'x40'	9	7	106'-8"
120'x40'	10	8	118'-6 1/2"

NOTES:

- TOTAL BUILDING WIDTH INCLUDES 1/4" PER MODULE CONSTRUCTION TOLERANCE PER FOUNDATION SHEETS S1.0, S1.1, S1.2 & S1.3.

BUILDING SIZE SCHEDULE