



787 Sprackles Ave., Manteca, CA 95336  
Phone (209) 825-1921 - Fax (209) 825-7018  
www.americanmodular.com

INTELLECTUAL PROPERTY & PROPRIETARY RIGHTS STATEMENT  
COPYRIGHT © AMERICAN MODULAR SYSTEMS (AMS)  
AMS OWNS ALL COPYRIGHT AND OTHER INTELLECTUAL PROPERTY AND PROPRIETARY RIGHTS IN THESE DRAWINGS, SPECIFICATIONS, AND THE MATERIAL CONTAINED HEREIN. CERTAIN ELEMENTS SHOWN IN THESE DOCUMENTS ARE REGISTERED TRADEMARKS OF AMS. ALL PATENTABLE MATERIALS CONTAINED IN THESE DOCUMENTS AND INVENTIONS WITH AMS SHALL REMAIN THE SOLE PROPERTY OF AMS. THESE DRAWINGS, SPECIFICATIONS, AND THE MATERIAL CONTAINED HEREIN MAY NOT BE REPRODUCED, TRANSMITTED, COPIED, DISTRIBUTED, MODIFIED, OR OTHERWISE DISPOSED OF (DIRECTLY OR INDIRECTLY) AND MAY NOT BE USED (IN WHOLE OR IN PART) TO ASSIST IN THE CONSTRUCTION, DESIGN, OR OTHER MARKING OR, OR FOR THE PURPOSE OF FURNISHING ANY INFORMATION FOR THE CONSTRUCTION, DESIGN, OR OTHER MARKING OF ANY BUILDINGS (MODULAR OR OTHERWISE), DRAWINGS, SPECIFICATIONS, PRINTS, APPARATUS, OR DEVICES THEREON, EXCEPT AS EXPRESSLY PERMITTED BY WRITTEN CONSENT OF OR IN A WRITTEN AGREEMENT WITH AMS. SUBMITTAL OF DRAWINGS TO MEET OFFICIAL REGULATORY REQUIREMENTS WILL NOT CONSTITUTE A FURNISHING OF PERMISSION OR ASSIGNMENT OF AMS'S COPYRIGHT OR OTHER INTELLECTUAL PROPERTY OR PROPRIETARY RIGHTS.

PRE-CHECKED SET NAME

**24'x40' THRU 120'x40'  
HIGH PITCH MODULAR  
BUILDINGS**

- 1 MAIN TEE RUNNER TYP. PER TABLE A, SHEET M1.7
- 2 CROSS TEE RUNNER TYP. PER TABLE A, SHEET M1.7
- 3 INTERIOR LIGHT FIXTURE, REFER TO SHEET SHEET E1.0 FOR SPEC'S ATTACHMENT PER DETAIL 7/M1.4
- 4 CEILING HEIGHT @ 8'-6" TO 10'-0"
- 5 STRUT/SPLAY WIRE ASSEMBLY, SEE 2/M1.4 FOR DETAILS
- 6 FIXED CEILING END, SEE DETAIL 5A/M1.4
- 7 FREE CEILING END, SEE DETAIL 5B/M1.4
- 8 CENTER SECTION THAT CROSSES MODULE LINE TO BE FIELD INSTALLED, SEE DETAIL 5C/M1.4
- 9 TYP. HVAC UNIT
- 10 SOLA-TUBE- SEE DETAIL 1/M1.6
- 11 EXHAUST FAN - SEE M1.1
- 12 GYPSUM BOARD CEILING PER DETAIL 8/M1.6

**SHEET NOTES**

- 1. WHERE TWO OR MORE HVAC UNITS SERVE A COMMON SPACE, UNITS SHALL BE EQUIPPED WITH A DUCT SMOKE DETECTOR FOR AUTO SHUTDOWN. INTERCONNECT WITH FIRE ALARM SYSTEM.
- 2. AUTOMATIC SHUT-OFF IS NOT REQUIRED WHEN ALL OCCUPIED ROOMS SERVED BY THE AIR HANDLING EQUIPMENT HAVE DIRECT ACCESS TO THE EXTERIOR AND THE TRAVEL DISTANCE DOES NOT EXCEED 100 FT. PER C.M.C. 608.1 EXCEPTION #2.
- 3. LIGHT FIXTURES MAY BE INSTALLED ROTATED 90° FROM SHOWN TO MATCH T-GRID.

**GENERAL NOTES**

MEP COMPONENT ANCHORAGE NOTES  
ALL MECHANICAL, PLUMBING, AND ELECTRICAL COMPONENTS SHALL BE ANCHORED AND INSTALLED PER THE DETAILS ON THE DSA APPROVED CONSTRUCTION DOCUMENTS. WHERE NO DETAIL IS INDICATED, THE FOLLOWING COMPONENTS SHALL BE ANCHORED OR BRACED TO MEET THE FORCE AND DISPLACEMENT REQUIREMENTS PRESCRIBED IN THE 2018 CBC, SECTIONS 1616A.1.18 THROUGH 1616A.1.25 AND ASCE 7-10 CHAPTER 13, 26 AND 30.

- 1. ALL PERMANENT EQUIPMENT AND COMPONENTS.
- 2. TEMPORARY OR MOVABLE EQUIPMENT THAT IS PERMANENTLY ATTACHED (E.G. HARD WIRED) TO THE BUILDING UTILITY SERVICES SUCH AS ELECTRICITY, GAS OR WATER.
- 3. MOVABLE EQUIPMENT WHICH IS STATIONED IN ONE PLACE FOR MORE THAN 8 HOURS AND HEAVIER THAN 400 POUNDS ARE REQUIRED TO BE ANCHORED WITH TEMPORARY ATTACHMENTS.

THE FOLLOWING MECHANICAL AND ELECTRICAL COMPONENTS SHALL BE POSITIVELY ATTACHED TO THE STRUCTURE, BUT THE ATTACHMENT NEED NOT BE DETAILED ON THE PLANS. THESE COMPONENTS SHALL HAVE FLEXIBLE CONNECTIONS PROVIDED BETWEEN THE COMPONENT AND ASSOCIATED DUCTWORK, PIPING, AND CONDUIT.

- A. COMPONENTS WEIGHING LESS THAN 400 POUNDS AND HAVE A CENTER OF MASS LOCATED 4 FEET OR LESS ABOVE THE ADJACENT FLOOR OR ROOF LEVEL THAT DIRECTLY SUPPORT THE COMPONENT.
- B. COMPONENTS WEIGHING LESS THAN 20 POUNDS, OR IN THE CASE OF DISTRIBUTED SYSTEMS, LESS THAN 5 POUNDS PER FOOT, WHICH ARE SUSPENDED FROM A ROOF OR FLOOR OR HUNG FROM A WALL.

FOR THOSE ELEMENTS THAT DO NOT REQUIRE DETAILS ON THE APPROVED DRAWINGS, THE INSTALLATION SHALL BE SUBJECT TO THE APPROVAL OF THE DESIGN PROFESSIONAL IN GENERAL RESPONSIBLE CHARGE OR STRUCTURAL ENGINEER DELEGATED RESPONSIBILITY AND THE DSA DISTRICT STRUCTURAL ENGINEER. THE PROJECT INSPECTOR WILL VERIFY THAT ALL COMPONENTS AND EQUIPMENT HAVE BEEN ANCHORED IN ACCORDANCE WITH ABOVE REQUIREMENTS.

PIPING, DUCTWORK, AND ELECTRICAL DISTRIBUTION SYSTEM BRACING NOTES

PIPING, DUCTWORK, AND ELECTRICAL DISTRIBUTION SYSTEMS SHALL BE BRACED TO COMPLY WITH THE FORCES AND DISPLACEMENTS PRESCRIBED IN ASCE 7-10 SECTION 13.3 AS DEFINED IN ASCE 7-10 SECTION 13.8.5.6, 13.8.7, 13.8.8, AND 2018 CBC, SECTIONS 1616A.1.23, 1616A.1.24, 1616A.1.25 AND 1616A.1.26.

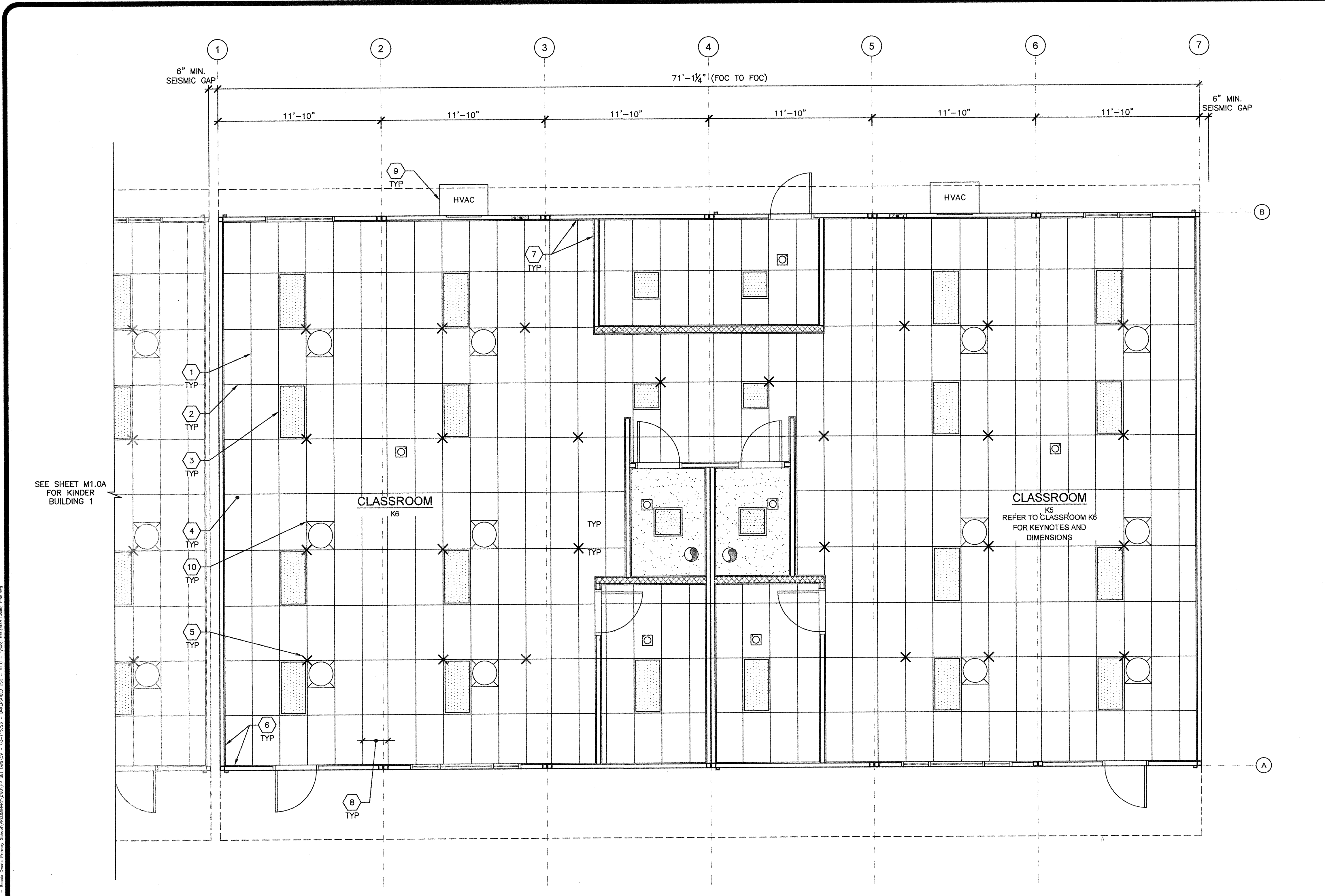
THE METHOD OF SHOWING BRACING AND ATTACHMENTS TO THE STRUCTURE FOR THE IDENTIFIED DISTRIBUTION SYSTEM ARE AS NOTED BELOW. WHEN BRACING AND ATTACHMENTS ARE BASED ON A PRE-APPROVED INSTALLATION GUIDE (E.G. SMACNA OR OSHPD OPM), COPIES OF THE BRACING SYSTEM INSTALLATION GUIDE OR MANUAL SHALL BE AVAILABLE ON THE JOBSITE PRIOR TO THE START OF AND DURING THE HANGING AND BRACING OF THE DISTRIBUTION SYSTEMS. THE STRUCTURAL ENGINEER OF RECORD SHALL VERIFY THE ADEQUACY OF THE STRUCTURE TO SUPPORT THE HANGER AND BRACE LOADS.

MECHANICAL PIPING (MP), MECHANICAL DUCTS (MD), PLUMBING PIPING (PP), ELECTRICAL DISTRIBUTION SYSTEMS (E):

MP MD PP PP OPTION 1: DETAILED ON THE APPROVED DRAWINGS WITH PROJECT SPECIFIC NOTES AND DETAILS.

MP MD PP PP OPTION 2: SHALL COMPLY WITH THE APPLICABLE OSHPD PRE-APPROVAL (OPM #) # \_\_\_\_\_

MP MD PP PP OPTION 3: SHALL COMPLY WITH THE SMACNA SEISMIC RESTRAINT MANUAL, OSHPD EDITION (2009), INCLUDING ANY ADDENDA, FASTENERS AND OTHER ATTACHMENTS NOT SPECIFICALLY IDENTIFIED IN THE SMACNA SEISMIC RESTRAINT MANUAL, OSHPD EDITION, ARE DETAILED ON THE APPROVED DRAWINGS WITH PROJECT SPECIFIC NOTES AND DETAILS. THE DETAILS SHALL ACCOUNT FOR THE APPLICABLE SEISMIC HAZARD LEVEL \_\_\_\_\_ AND CONNECTION LEVEL \_\_\_\_\_ FOR THE PROJECT AND CONDITIONS.



SEE SHEET M1.0A FOR KINDER BUILDING 1

KINDER BUILDING 2 REFLECTED CEILING PLAN

SCALE: 1/4" = 1'-0"

BUILDING SIZE SCHEDULE			
BUILDING SIZE (FT)	TOTAL # OF 12'-0" WIDE MODULES	TOTAL # OF CENTER MODULES	TOTAL FNDN WIDTH
24'x40'	2	0	23'-6 1/2"
36'x40'	3	1	35'-6 3/4"
48'x40'	4	2	47'-5"
60'x40'	5	3	59'-3 1/4"
72'x40'	6	4	71'-1 1/2"
84'x40'	7	5	82'-11 1/4"
96'x40'	8	6	94'-10"
108'x40'	9	7	106'-8 1/4"
120'x40'	10	8	118'-6 1/2"

NOTES:  
1. TOTAL BUILDING WIDTH INCLUDES 1/4" PER MODULE CONSTRUCTION TOLERANCE PER FOUNDATION SHEETS S1.0, S1.1, S1.2 & S1.3

NOT USED

NOT USED

NOT USED

BUILDING SIZE SCHEDULE

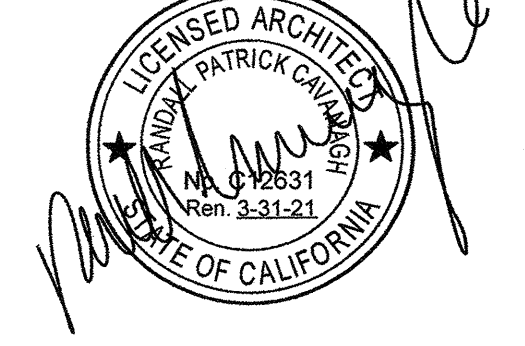
MEP COMPONENT ANCHORAGE NOTES

SITE SPECIFIC PROJECT NAME

SHEET TITLE

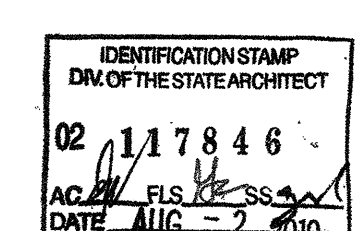
TYPICAL REFLECTED  
CEILING PLAN

MANUFACTURER PROFESSIONAL OF RECORD ON PC



THESE DRAWINGS ARE PRELIMINARY AND NOT FOR CONSTRUCTION UNLESS STAMPED & SIGNED BY THE ENGINEER OF RECORD.

PROJECT SPECIFIC STATE AGENCY APPROVAL



ORIGINAL PC STATE AGENCY APPROVAL

BASED ON PC# 02-115726

PRE-CHECK (PC) DOCUMENT  
CODE: 2018 CBC  
A SEPARATE PROJECT APPLICATION FOR CONSTRUCTION IS REQUIRED.

REVISIONS

DRAWN BY: AH  
SCALE: AS NOTED  
DATE: 05/20/19  
SHEET NUMBER

**M1.0B-02**