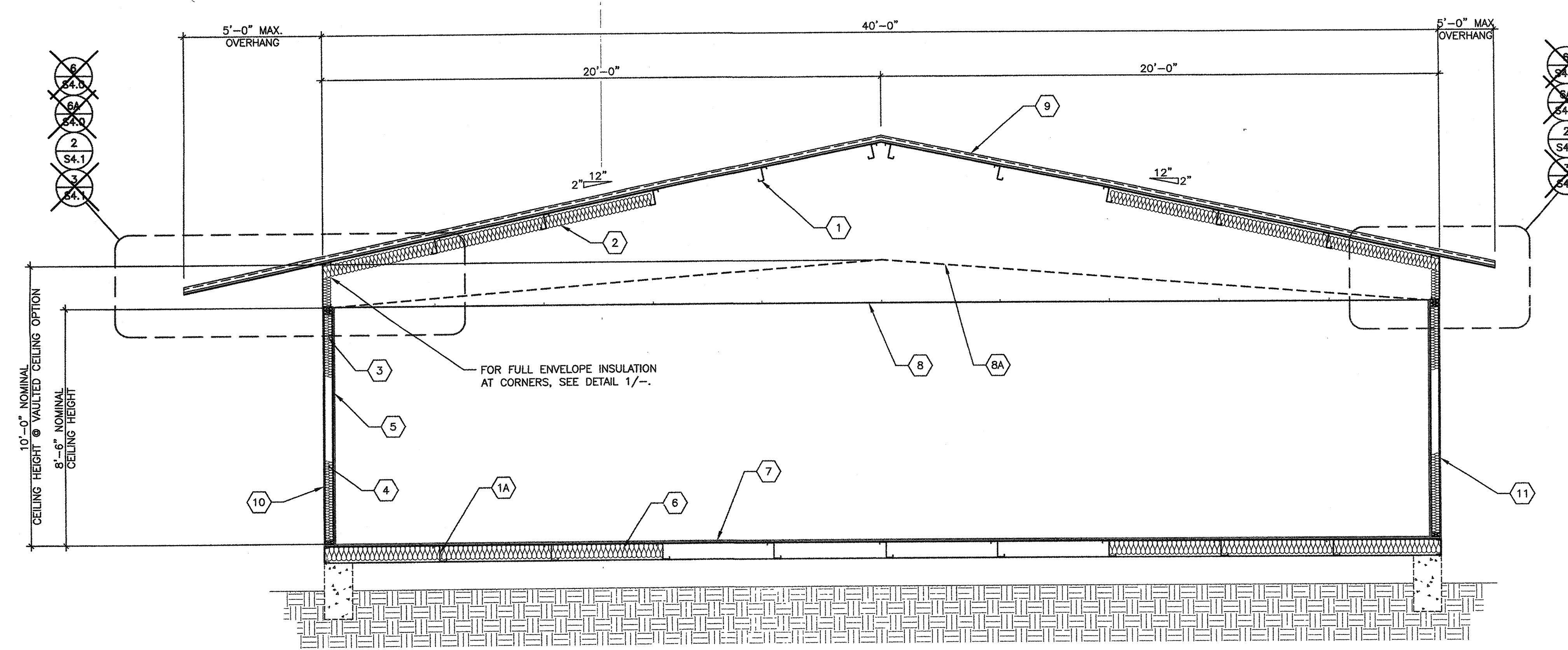


**INTELLECTUAL PROPERTY & PROPRIETARY RIGHTS STATEMENT**  
COPYRIGHT © AMERICAN MODULAR SYSTEMS (AMS)  
AMS OWNS ALL COPYRIGHT AND OTHER INTELLECTUAL PROPERTY AND PROPRIETARY RIGHTS IN THESE DRAWINGS, SPECIFICATIONS, AND THE MATERIAL CONTAINED HEREIN. CERTAIN ELEMENTS SHOWN IN THESE DOCUMENTS ARE REGISTERED TRADEMARKS OF AMS. ALL PERMISSIBLE MATERIALS CONTAINED IN THESE DOCUMENTS AND ORIGINATING WITH AMS WILL REMAIN THE SOLE PROPERTY OF AMS. THESE OWNERS, SPECIFICATIONS, AND THE MATERIAL CONTAINED HEREIN MAY NOT BE REPRODUCED, TRANSMITTED, COPIED, DISTRIBUTED, MODIFIED, OR OTHERWISE DISPOSED OF (DIRECTLY OR INDIRECTLY) AND MAY NOT BE USED IN WHOLE OR IN PART TO ASSIST IN THE CONSTRUCTION, DESIGN, OR OTHER MARKING OF ANY BUILDING (MODULAR OR OTHERWISE). DRAWINGS, SPECIFICATIONS, PRINTS, APPARATUS, OR PARTS THEREOF, EXCEPT AS EXPRESSLY PERMITTED BY WRITTEN CONSENT TO USE IN A WRITTEN AGREEMENT WITH AMS, SHALL NOT BE SUBMITTED OR DISTRIBUTED TO MEET OFFICIAL REGULATORY REQUIREMENTS WILL NOT BE CONSIDERED AS PUBLICATION IN DEROGATION OF AMS'S COPYRIGHT OR OTHER INTELLECTUAL PROPERTY OR PROPRIETARY RIGHTS.



- 1 "Z" PURLINS @ 48" O.C. PER ROOF FRAMING PLAN
- 1A STEEL "Z" FLOOR JOISTS PER FLOOR FRAMING PLAN
- 2 R-19 INSULATION w/ 22 GA WIRE @ 16" O.C.
- 3 INSULATION w/ KRAFT PAPER
- 4 WALL STUDS PER SHEETS S8.0 & S9.0.
- 5 VINYL FABRIC OVER TACKABLE BRACING PANELS.
- 6 INSULATION w/ KRAFT PAPER AND CHICKEN WIRE.
- 7 PLYWOOD OR CONCRETE FLOOR PER SHEETS S3.0, S3.1, S3.2, & S3.3.
- 8 SUSPENDED T-BAR CEILING PER M1.0
- 8A OPTIONAL: PITCHED SUSPENDED T-BAR CEILING
- 9 FINISHED ROOFING PER ROOF PLAN & ROOF FRAMING PLAN
- 10 TYPICAL SHEATHING NAILING .131x2 1/2" GALV. @ 6" O.C. PANEL EDGES (ALL EDGES BLOCKED) .131x2 1/4" GALV. @ 12" O.C. FIELD.
- 11 EXTERIOR FINNISH PER EXTERIOR ELEVATIONS.
- 12 ALTERNATE DUAL PITCH.

**KEY NOTES**

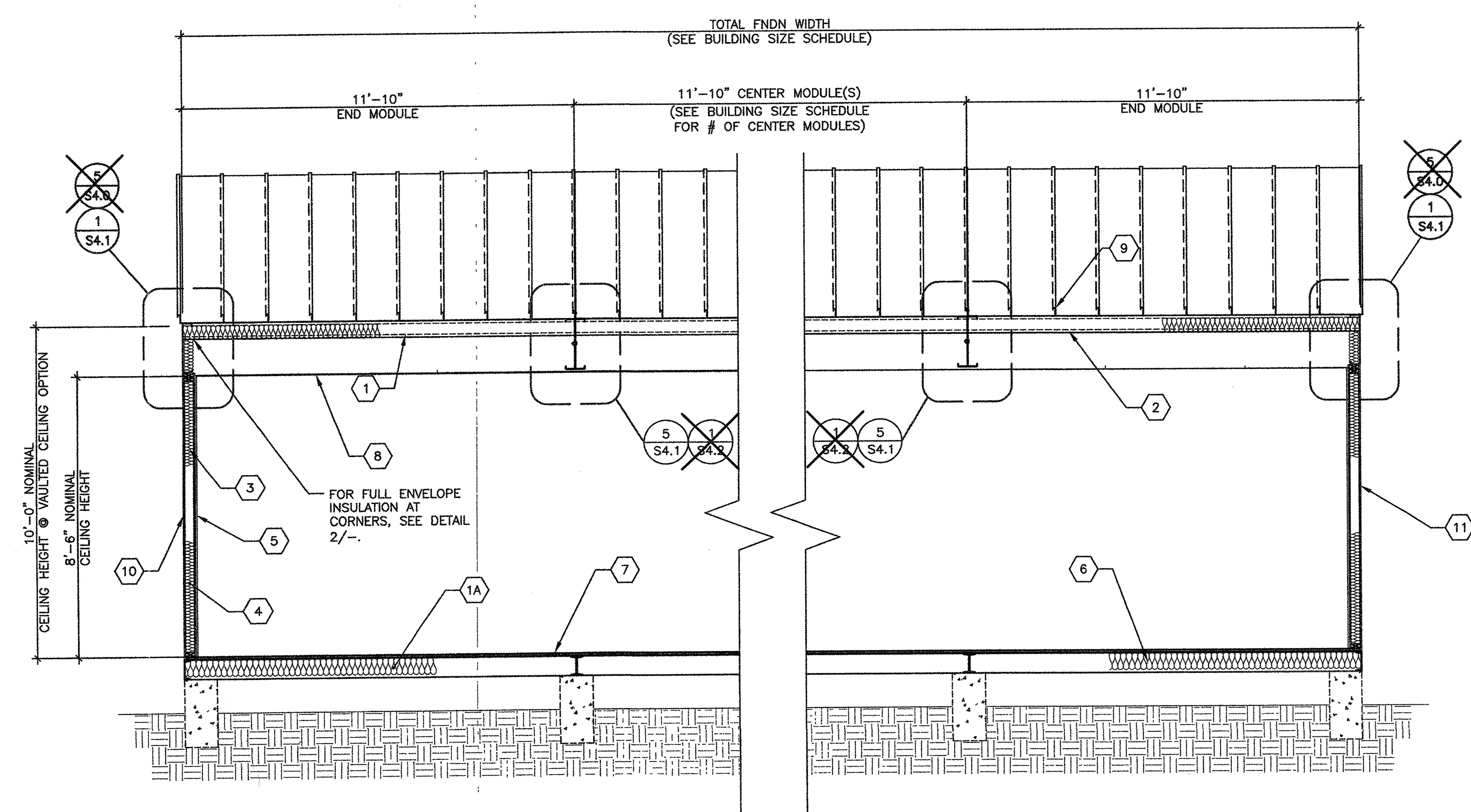
BUILDING SIZE (FT)	TOTAL # OF 12'-0" WIDE MODULES	TOTAL # OF CENTER MODULES	TOTAL ENDN WIDTH
24'x40'	2	0	23'-8 1/2"
36'x40'	3	0	35'-5 1/2"
48'x40'	4	2	47'-5"
60'x40'	5	3	58'-3 1/2"
72'x40'	6	4	71'-1 1/2"
84'x40'	7	5	82'-2 1/2"
96'x40'	8	6	94'-10"
108'x40'	9	7	106'-8 1/2"
120'x40'	10	8	118'-6 1/2"

NOTES:  
1. TOTAL BUILDING WIDTH INCLUDES 1/4" PER MODULE CONSTRUCTION TOLERANCE PER FOUNDATION SHEETS S1.0, S1.1, S1.2 & S1.3

TYP. LONGITUDINAL SECTION-MONO/DUAL PITCH

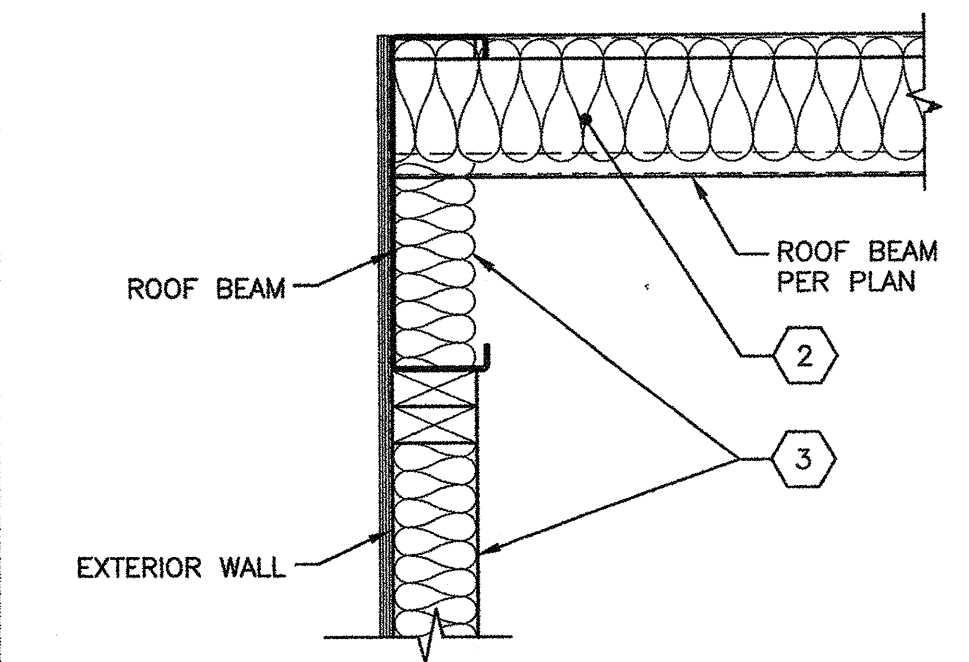
SCALE 3/8"=1'-0"

**BUILDING SIZE SCHEDULE**

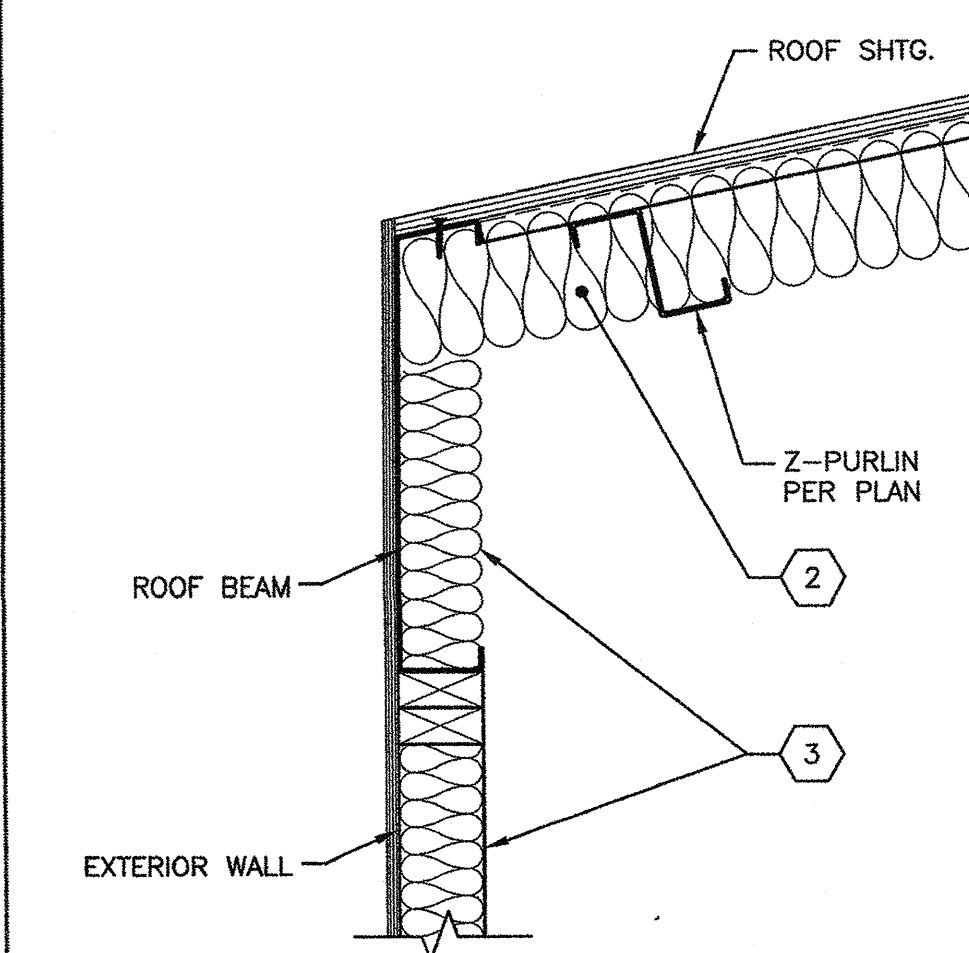


TYP. TRANSVERSE SECTION-MONO/DUAL PITCH

SCALE 3/8"=1'-0"



INSULATION CORNER DET. SCALE 1-1/2"=1'-0"



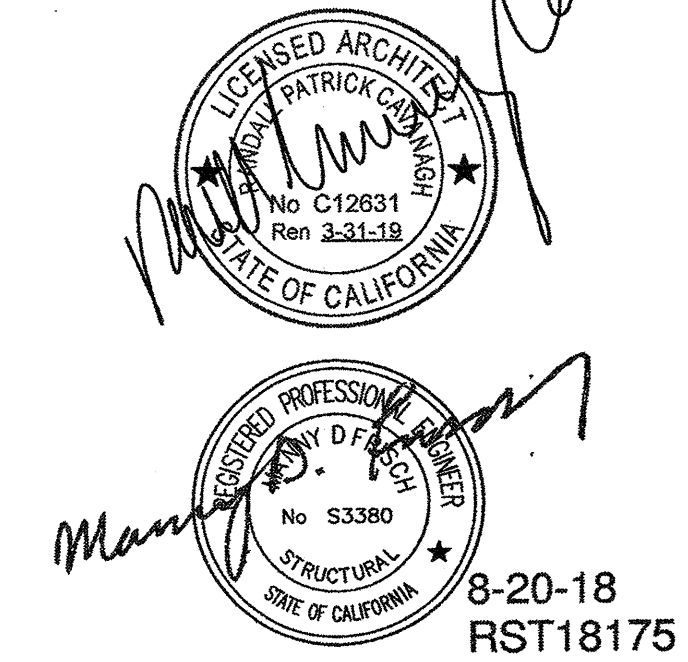
INSULATION CORNER DET. SCALE 1-1/2"=1'-0"

SITE SPECIFIC PROJECT NAME

24'x40' THRU 120'x40' HIGH PITCH MODULAR BUILDINGS

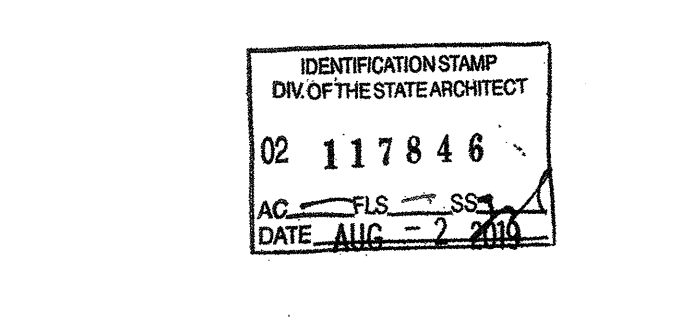
SHEET TITLE  
TYPICAL LONGITUDINAL AND TRANSVERSE FRAME SECTIONS

MANUFACTURER PROFESSIONAL OF RECORD ON PC

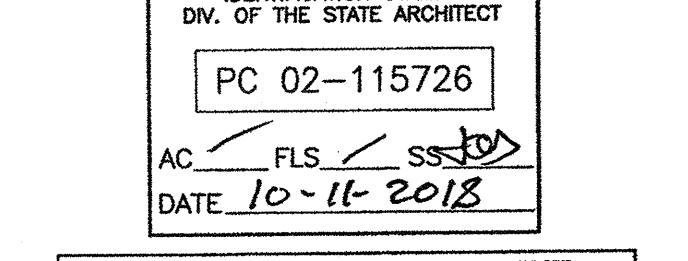


THESE DRAWINGS ARE PROVISIONARY AND NOT FOR CONSTRUCTION UNLESS STAMPED & SIGNED BY THE ENGINEER OF RECORD

PROJECT SPECIFIC STATE AGENCY APPROVAL



ORIGINAL PC STATE AGENCY APPROVAL



PRE-CHECK (PC) DOCUMENT  
CODE 2018 CBC  
A SEPARATE PROJECT APPLICATION FOR CONSTRUCTION IS REQUIRED

REVISIONS

NO.	DESCRIPTION

DRAWN BY: \_\_\_\_\_  
SCALE: AS NOTED  
DATE: \_\_\_\_\_

SHEET NUMBER  
**S6.0-02**