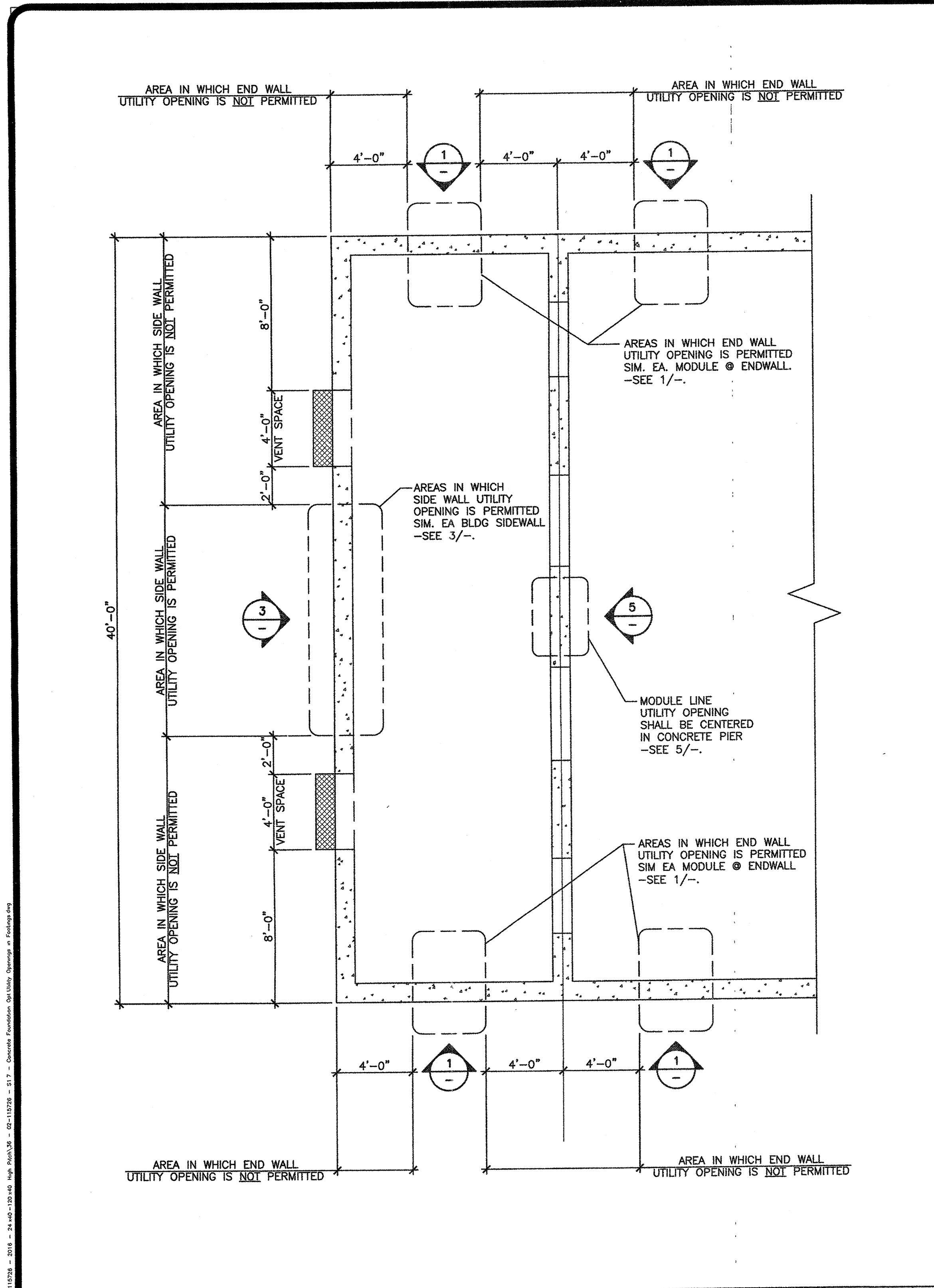
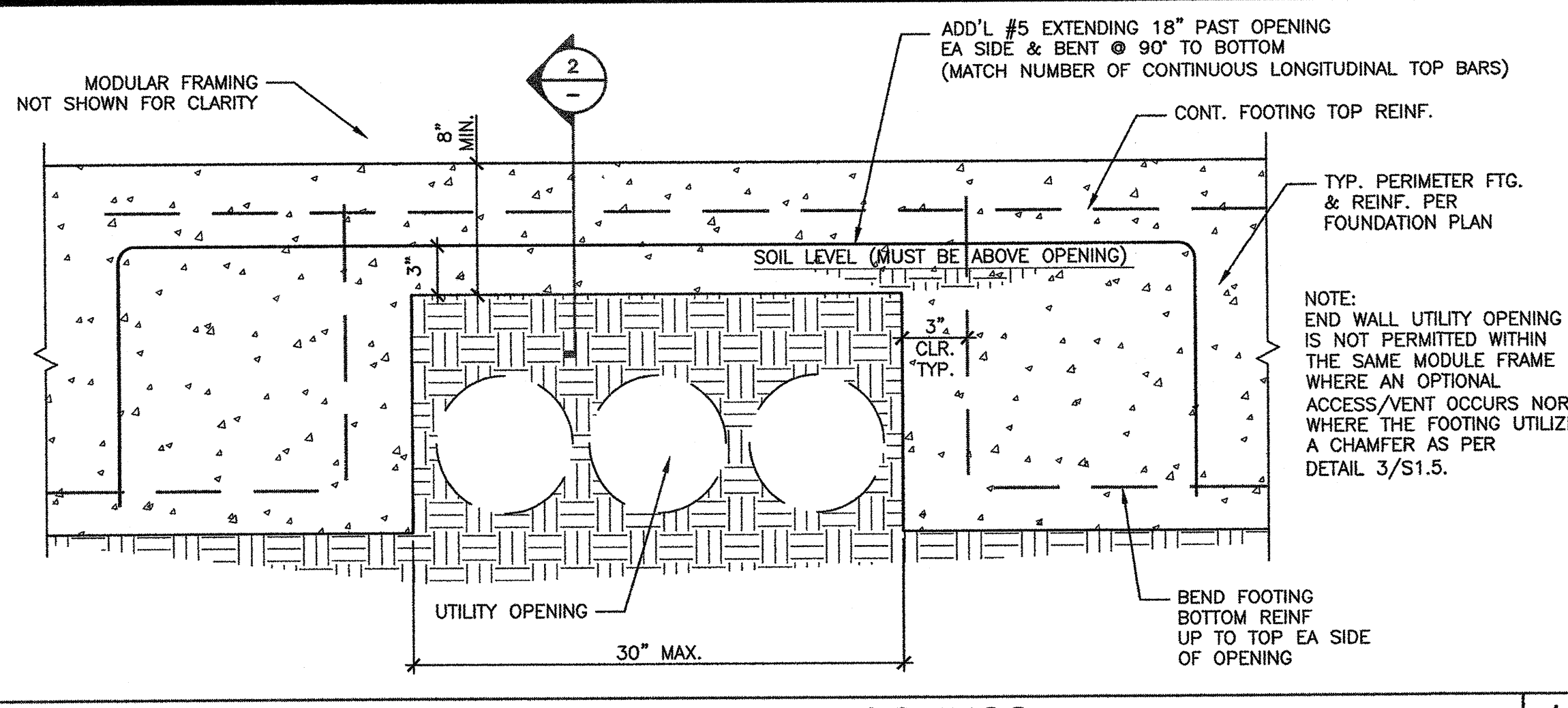




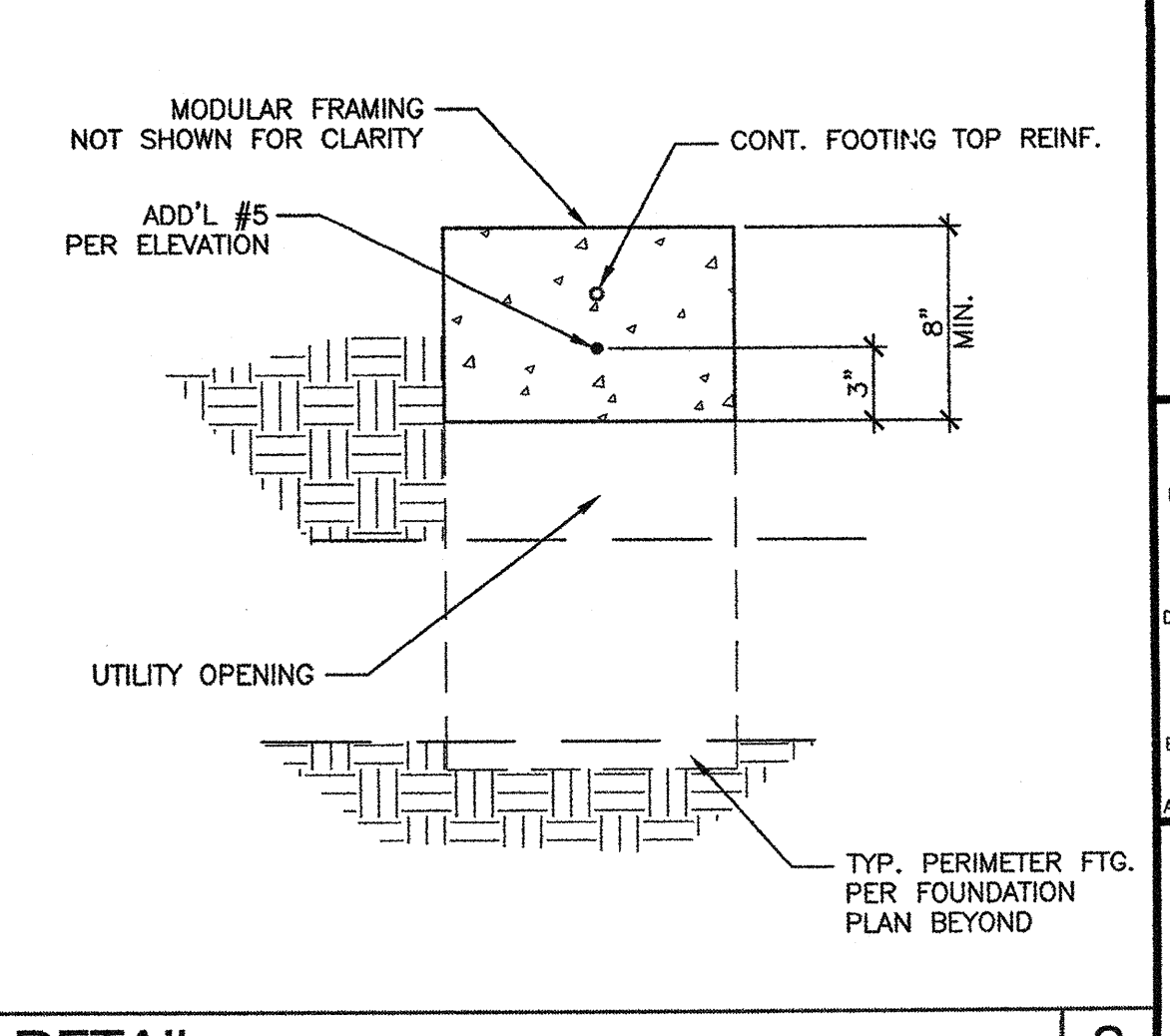
INTELLECTUAL PROPERTY & PROPRIETARY RIGHTS STATEMENT
COPYRIGHT © AMERICAN MODULAR SYSTEMS (AMS)
AMS OWNS ALL COPYRIGHT AND OTHER INTELLECTUAL-PROPERTY AND PROPRIETARY RIGHTS IN THESE DRAWINGS, SPECIFICATIONS, AND THE MATERIAL CONTAINED HEREIN. ANY REPRODUCTION OR TRANSMISSION OF THESE DRAWINGS, SPECIFICATIONS, AND THE MATERIAL CONTAINED HEREIN WITHOUT THE WRITTEN PERMISSION OF AMS IS STRICTLY PROHIBITED. ANY REPRODUCTION OR TRANSMISSION OF THESE DRAWINGS, SPECIFICATIONS, AND THE MATERIAL CONTAINED HEREIN WITHOUT THE WRITTEN PERMISSION OF AMS IS STRICTLY PROHIBITED. ANY REPRODUCTION OR TRANSMISSION OF THESE DRAWINGS, SPECIFICATIONS, AND THE MATERIAL CONTAINED HEREIN WITHOUT THE WRITTEN PERMISSION OF AMS IS STRICTLY PROHIBITED.



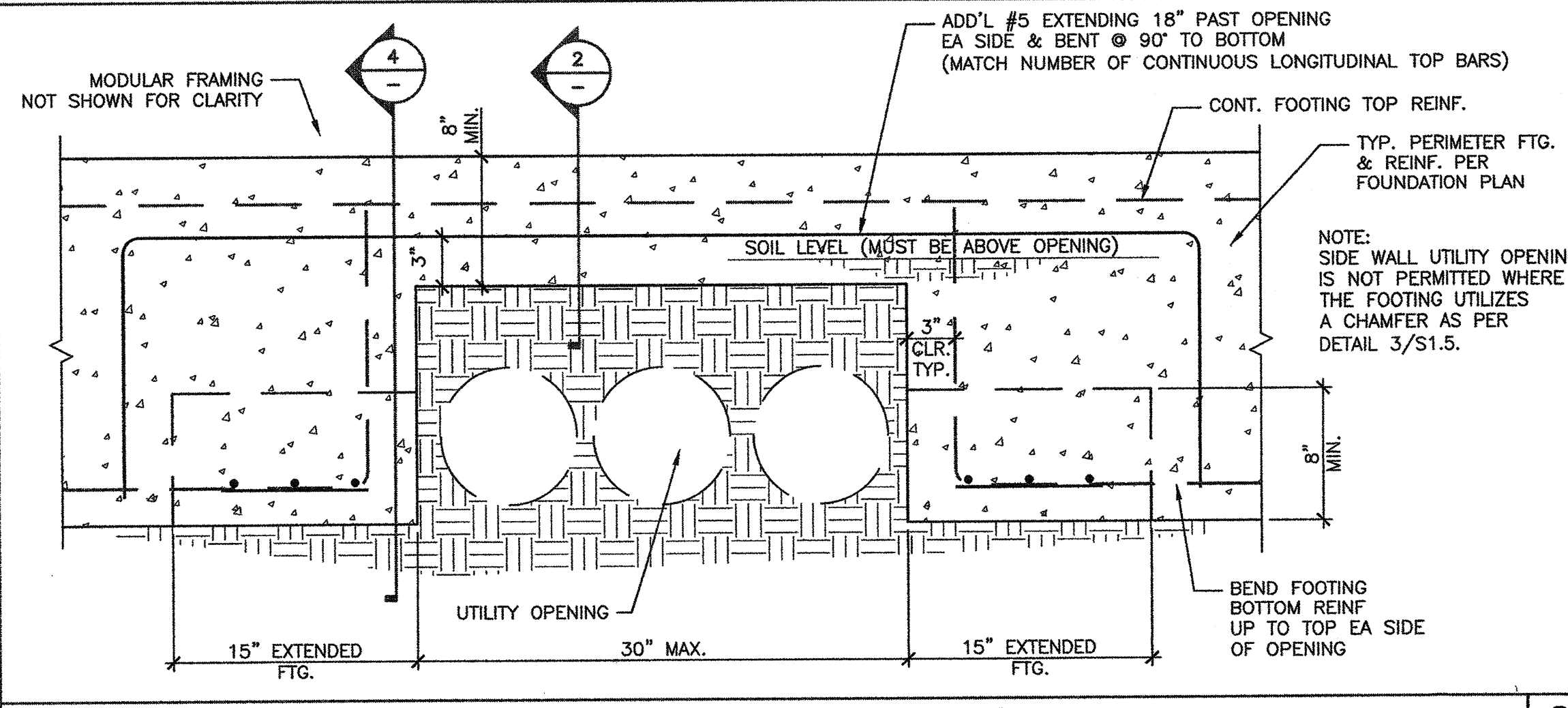
OPTIONAL UTILITY OPENINGS PLAN SCALE: 1/4"=1'-0" A



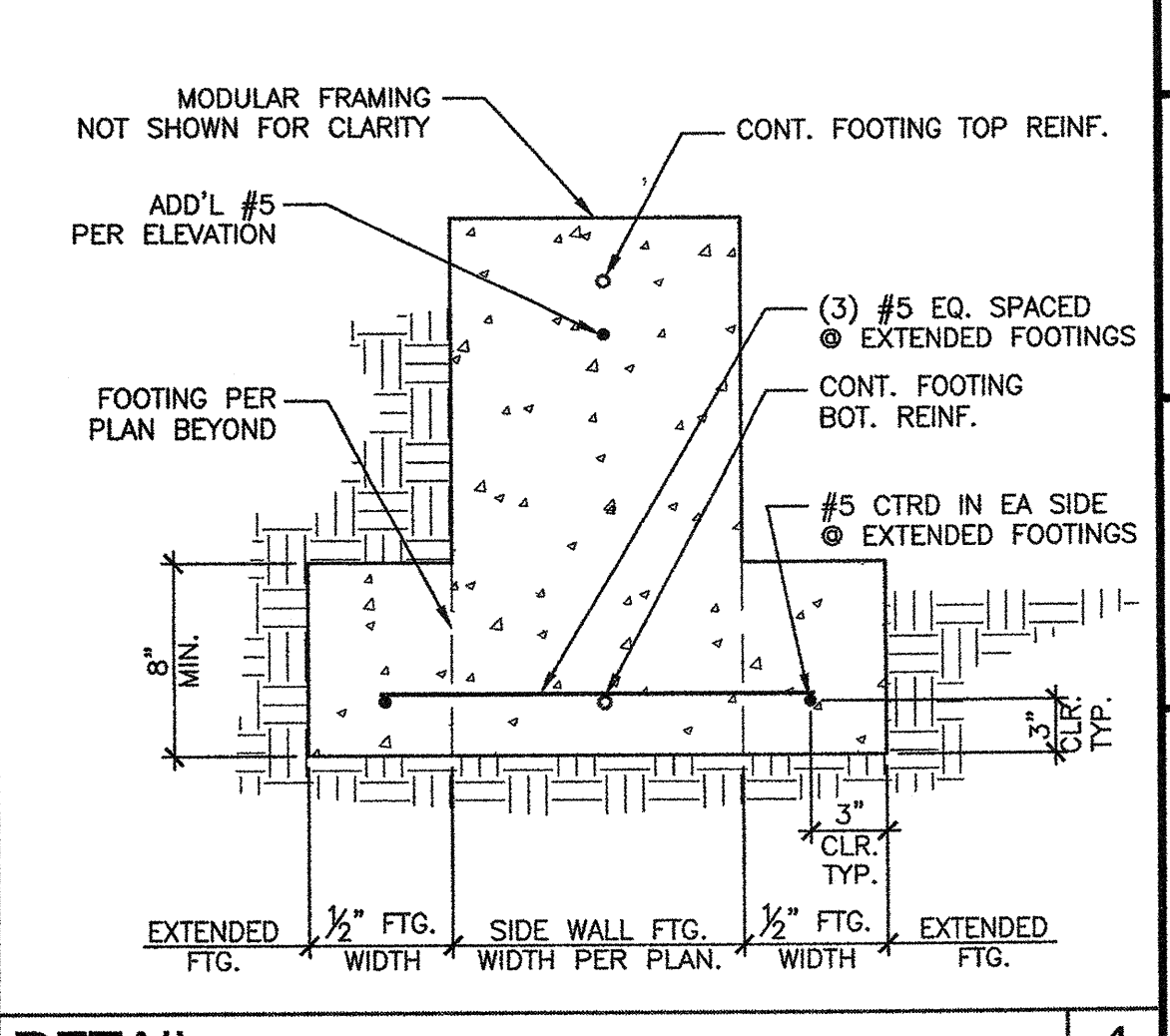
OPTIONAL UTILITY OPENINGS IN END WALL FOOTINGS SCALE: 1 1/2"=1'-0" 1



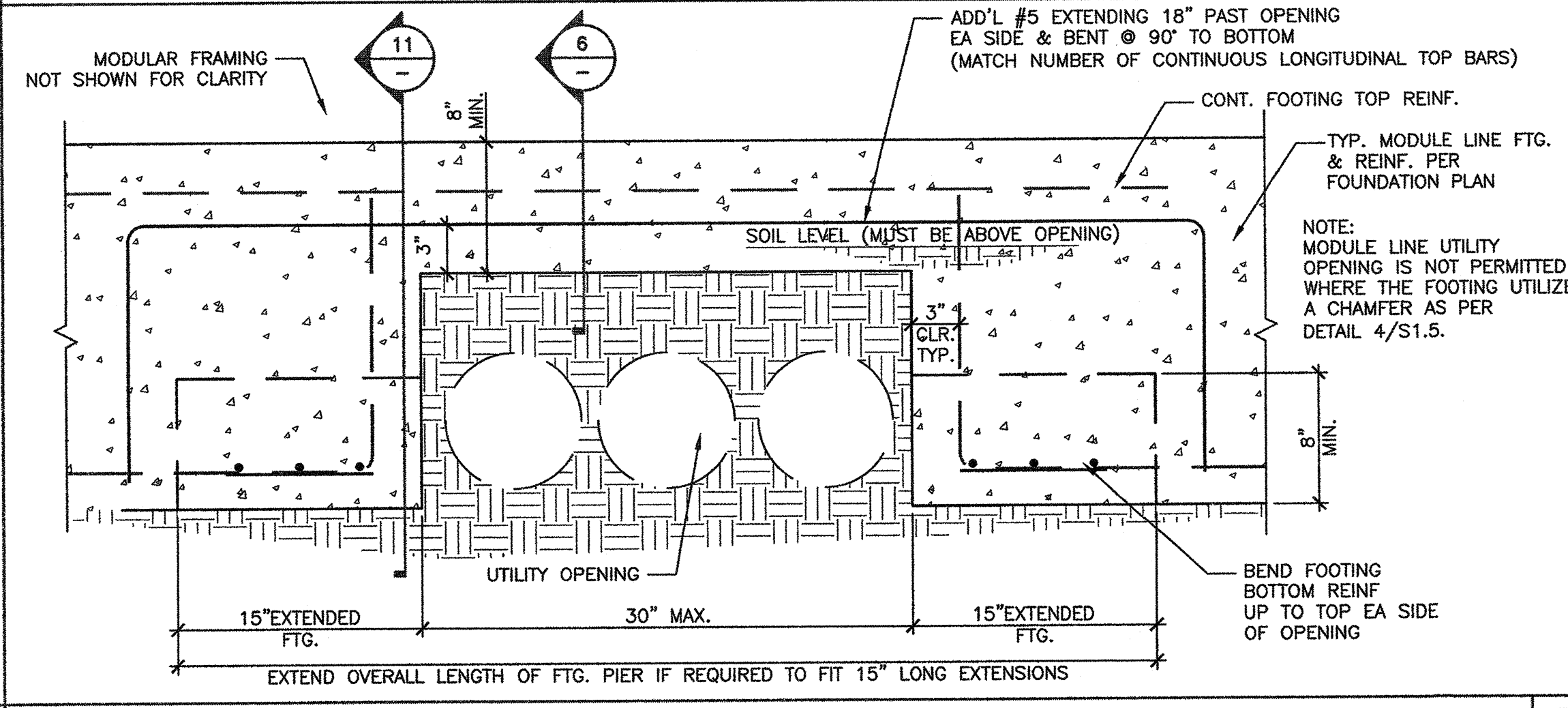
DETAIL 2 SCALE: 1 1/2"=1'-0" 2



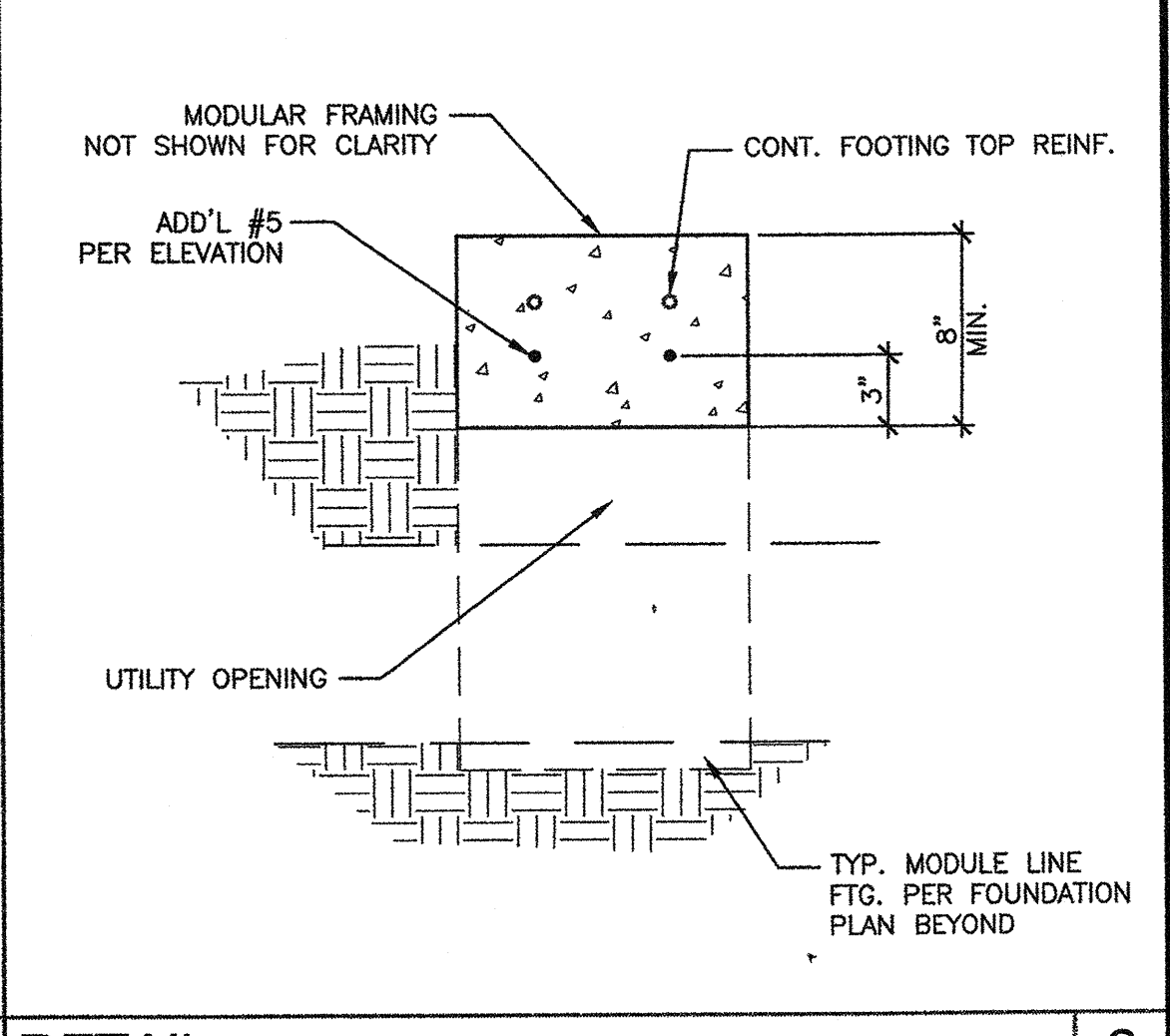
OPTIONAL UTILITY OPENINGS IN SIDE WALL FOOTINGS SCALE: 1 1/2"=1'-0" 3



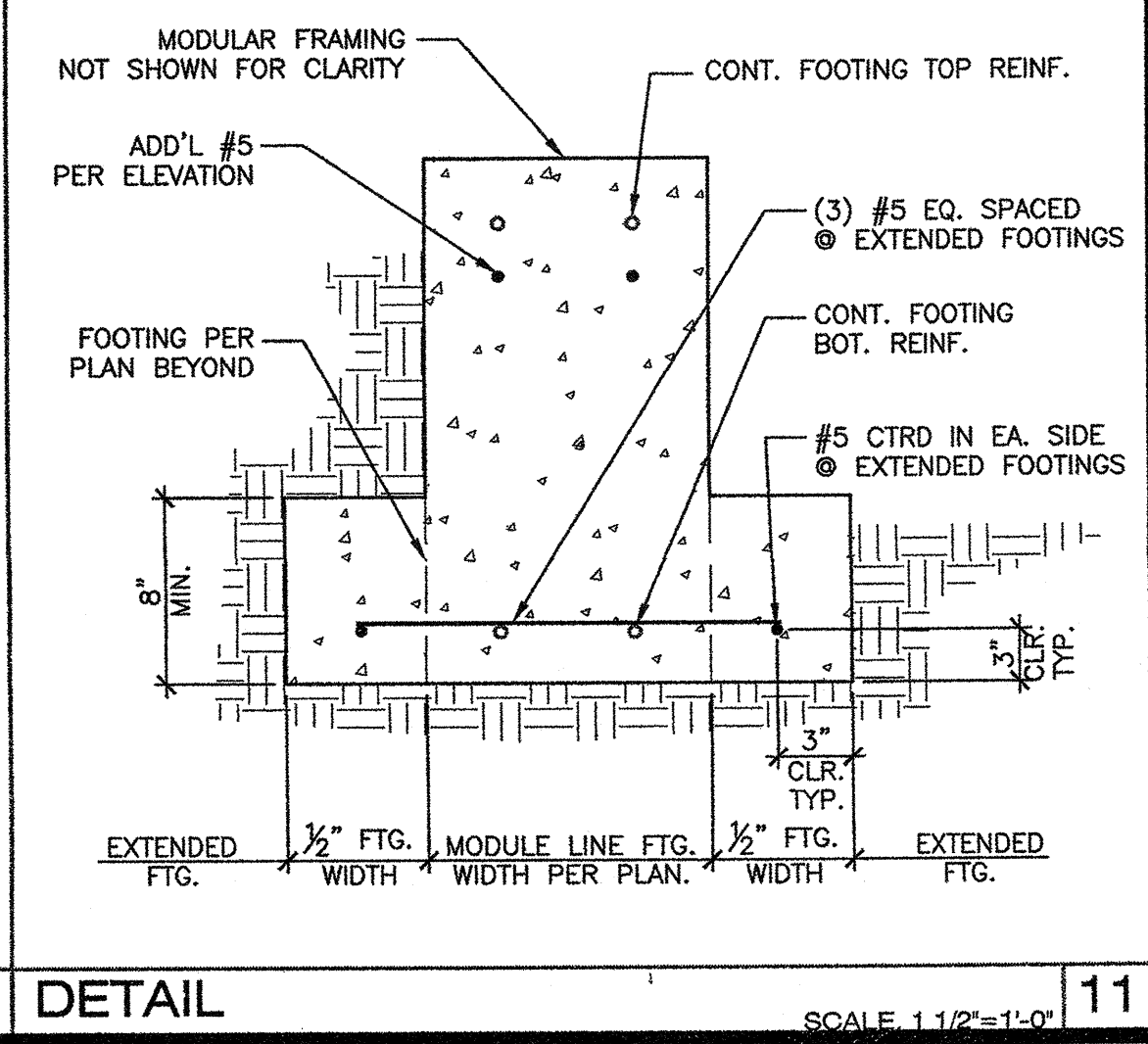
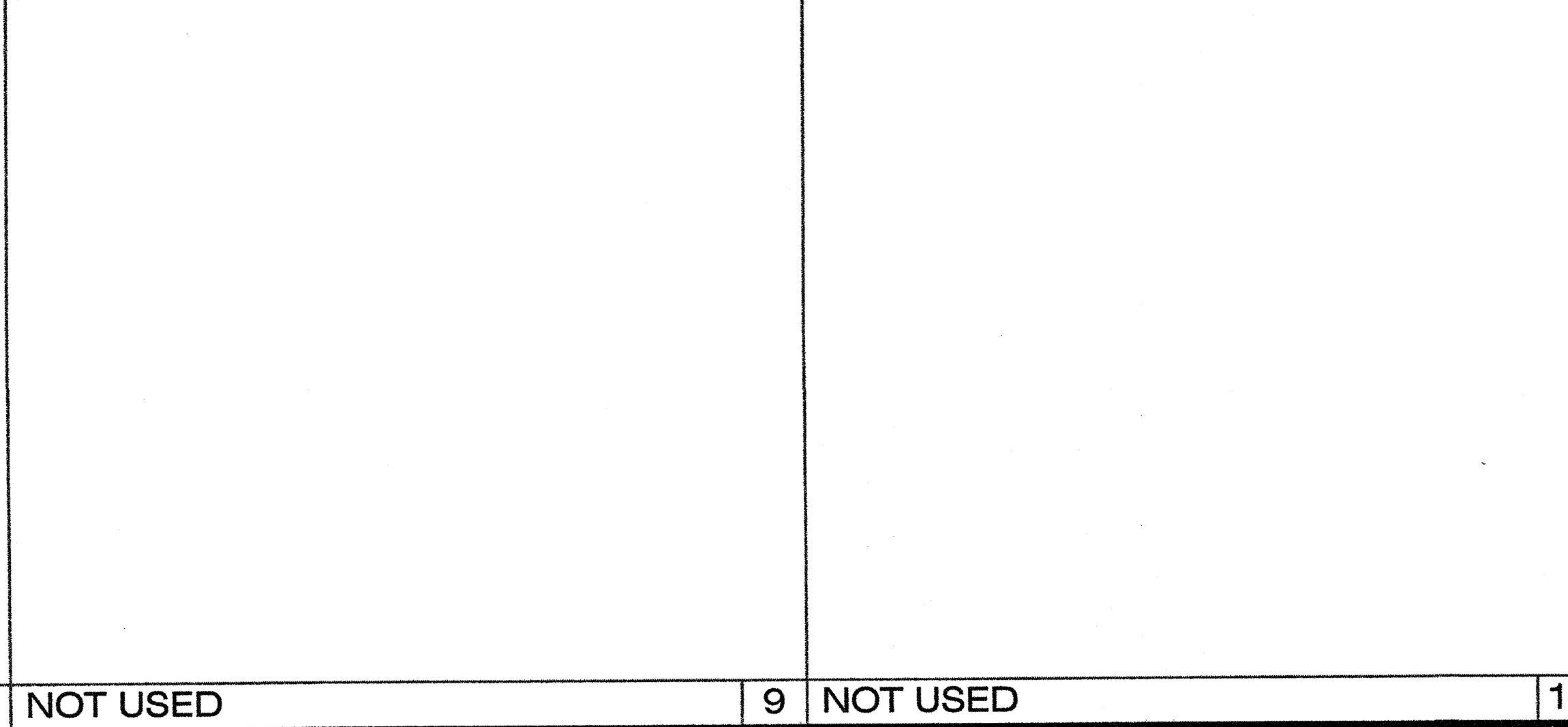
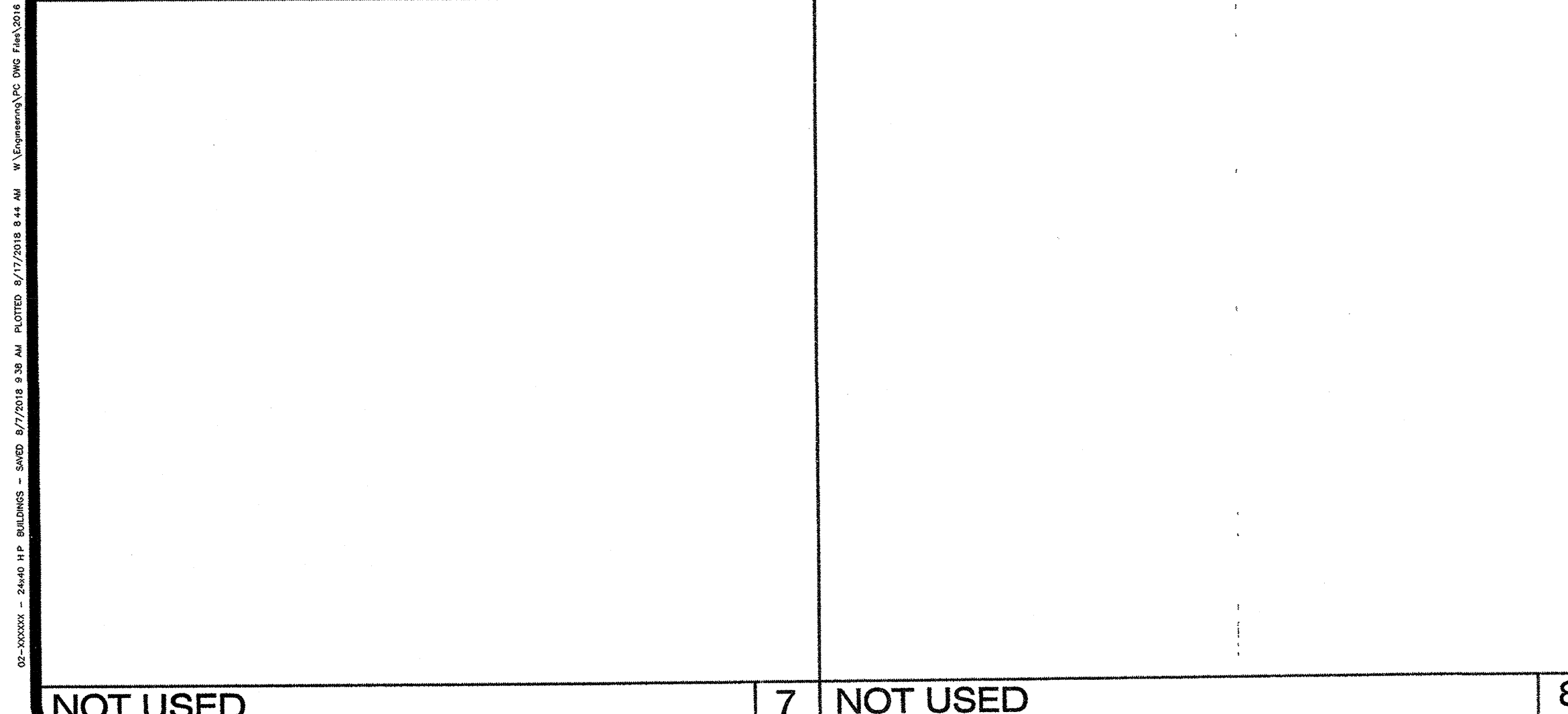
DETAIL 4 SCALE: 1 1/2"=1'-0" 4



OPTIONAL UTILITY OPENINGS IN MODULE LINE FOOTINGS SCALE: 1 1/2"=1'-0" 5



DETAIL 6 SCALE: 1 1/2"=1'-0" 6



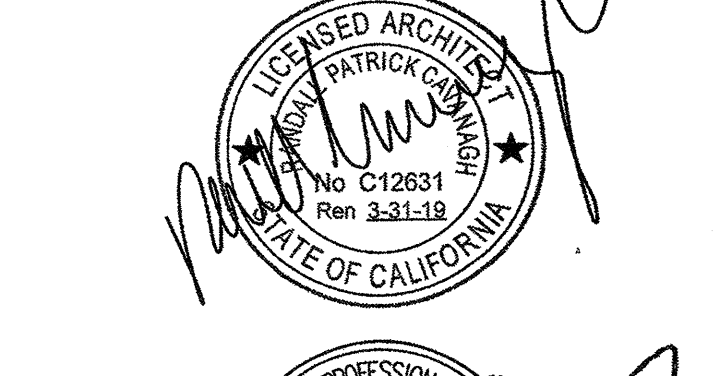
DETAIL 11 SCALE: 1 1/2"=1'-0" 11

24'x40' THRU 120'x40' HIGH PITCH MODULAR BUILDINGS

SITE SPECIFIC PROJECT NAME

SHEET TITLE
CONCRETE FOUNDATION
OPTIONAL UTILITY
OPENINGS IN FOOTINGS

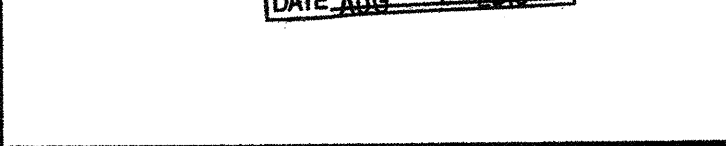
MANUFACTURER PROFESSIONAL OF RECORD ON PC



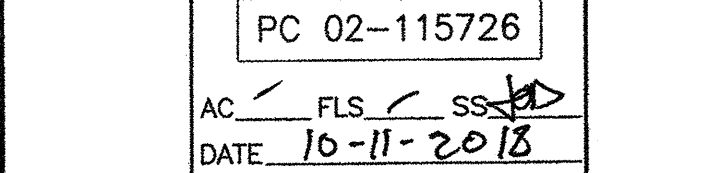
8-20-18
RST18175

THESE DRAWINGS ARE PRELIMINARY AND NOT FOR CONSTRUCTION UNLESS STAMPED & SIGNED BY THE ENGINEER OF RECORD.

PROJECT SPECIFIC STATE AGENCY APPROVAL



ORIGINAL PC STATE AGENCY APPROVAL



PRE-CHECK (PC) DOCUMENT
CODE 2016 CBC
A SEPARATE PROJECT APPLICATION FOR CONSTRUCTION IS REQUIRED

REVISIONS
DRAWN BY
SCALE: AS NOTED
DATE
SHEET NUMBER

S1.7-02