



INTELLECTUAL PROPERTY & PROPRIETARY RIGHTS STATEMENT
COPYRIGHT © AMERICAN MODULAR SYSTEMS (AMS).
AMS OWNS ALL COPYRIGHT AND OTHER INTELLECTUAL PROPERTY AND PROPRIETARY RIGHTS IN THESE DRAWINGS, SPECIFICATIONS, AND THE MATERIAL CONTAINED HEREIN. CERTAIN ELEMENTS SHOWN IN THESE DOCUMENTS ARE REGISTERED TRADEMARKS OF AMS. ALL PATENTABLE MATERIALS CONTAINED IN THESE DOCUMENTS AND ORIGINATING WITH AMS WILL REMAIN THE SOLE PROPERTY OF AMS. THESE DRAWINGS, SPECIFICATIONS, AND THE MATERIAL CONTAINED HEREIN MAY NOT BE REPRODUCED, TRANSMITTED, COPIED, DISTRIBUTED, MODIFIED, OR OTHERWISE DISPOSED OF (DIRECTLY OR INDIRECTLY) AND MAY NOT BE USED (IN WHOLE OR IN PART) TO ASSIST IN THE CONSTRUCTION, DESIGN, OR OTHER MAKING OR, OR FOR THE PURPOSE OF FURNISHING ANY INFORMATION FOR THE CONSTRUCTION DESIGN, OR OTHER MAKING OF ANY BUILDINGS (MODULAR OR OTHERWISE), DRAWINGS, SPECIFICATIONS, PRINTS, APPARATUS, OR PARTS THEREOF, EXCEPT AS EXPRESSLY PERMITTED BY WRITTEN CONSENT OF OR IN A WRITTEN AGREEMENT WITH AMS. SUBMITTAL OF INFORMATION TO ANY OTHER REGULATORY AGENCY WILL BE CONSIDERED AS PRESUMPTION OF ASSIGNMENT OF AMS' COPYRIGHT OR OTHER INTELLECTUAL PROPERTY OR PROPRIETARY RIGHTS.

PRE-CHECKED SET NAME

24'x40' THRU 120'x40' HIGH PITCH MODULAR BUILDINGS

SITE SPECIFIC PROJECT NAME

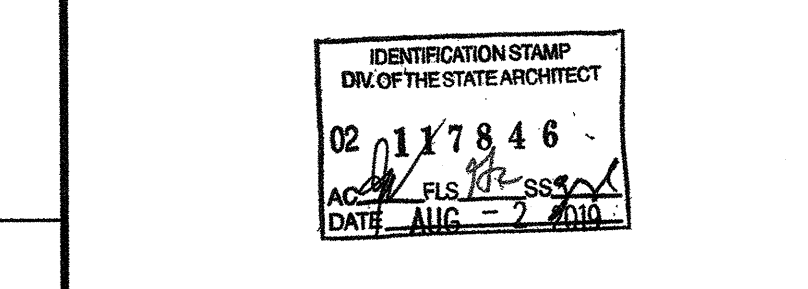
SHEET TITLE

TYPICAL EXTERIOR ELEVATION SYNTHETIC - STUCCO OPTION

MANUFACTURER PROFESSIONAL OF RECORD ON PC



THESE DRAWINGS ARE PRELIMINARY AND NOT FOR CONSTRUCTION UNLESS SHOWN OTHERWISE BY THE ENGINEER OR ARCHITECT.
PROJECT SPECIFIC STATE AGENCY APPROVAL



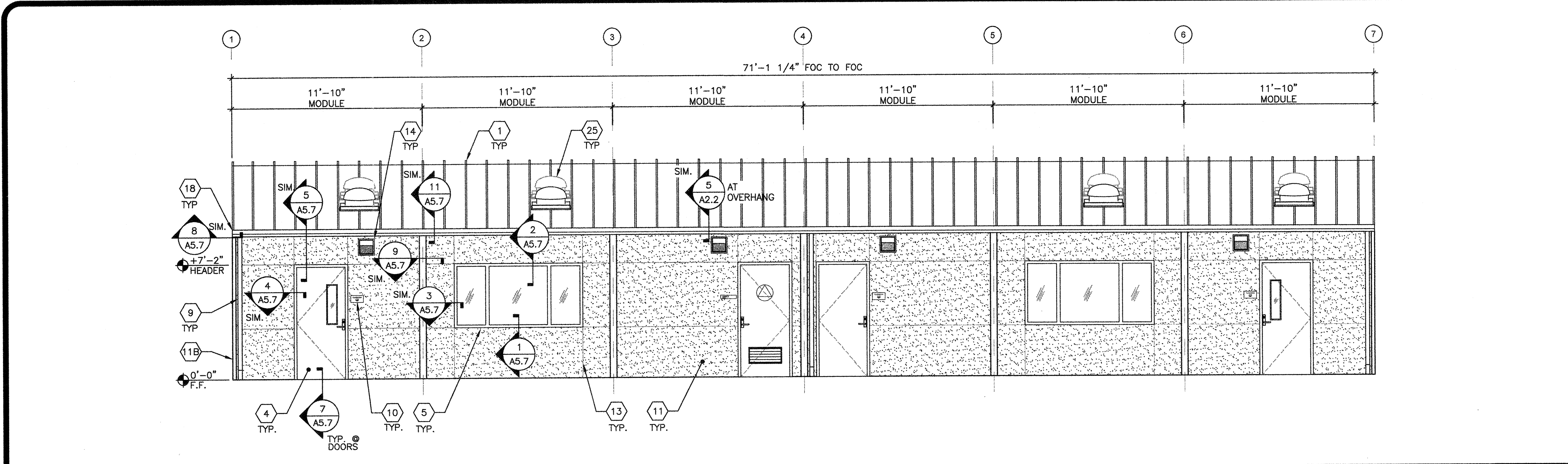
ORIGINAL PC STATE AGENCY APPROVAL

BASED ON PC# 02-115726
PRE-CHECK (PC) DOCUMENT
CODE: 2016 CBC
A SEPARATE PROJECT APPLICATION FOR CONSTRUCTION IS REQUIRED.

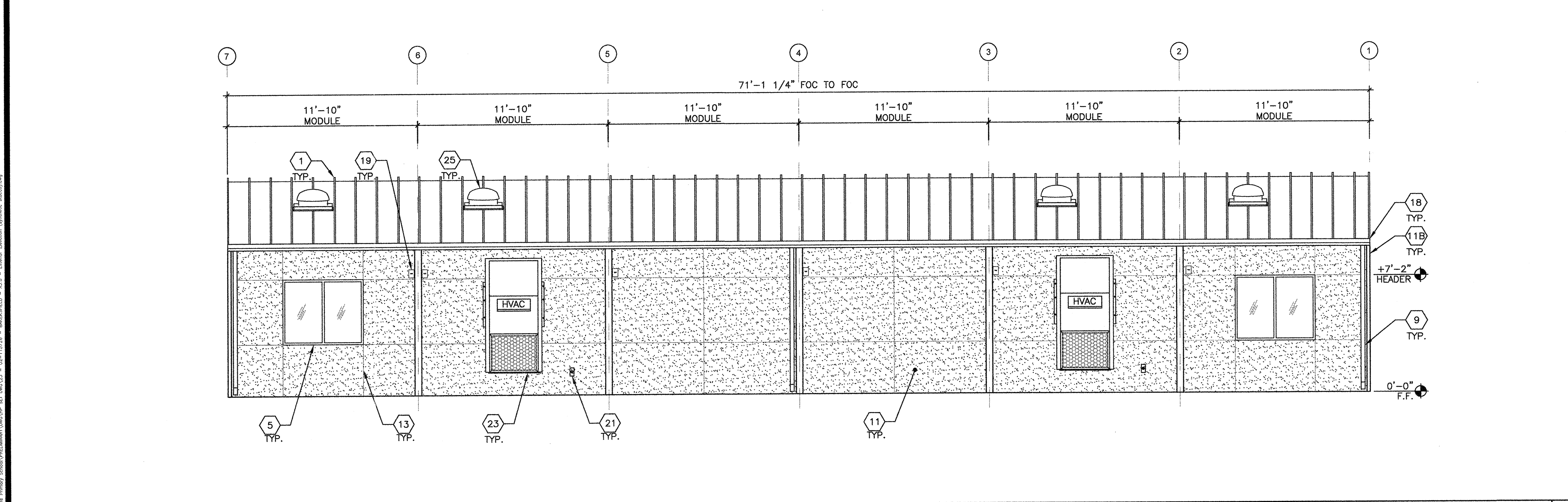
REVISIONS

DRAWN BY: AH
SCALE: AS NOTED
DATE: 06/20/19
SHEET NUMBER

A5.6D-02



KINDER BUILDING 4 EXTERIOR ELEVATION - FRONT SCALE: 1/4"=1'-0" 1



KINDER BUILDING 4 EXTERIOR ELEVATION - REAR SCALE: 1/4"=1'-0" 2

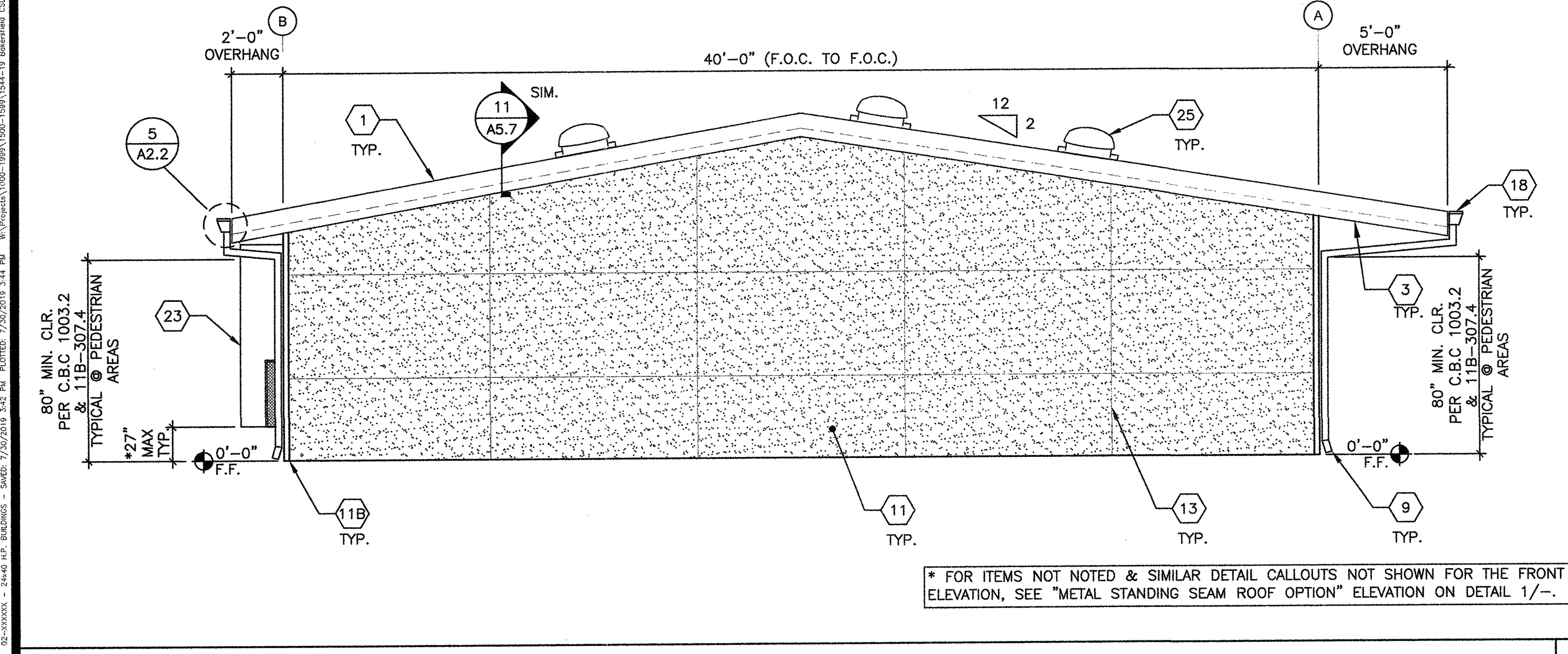
- 1 STANDING SEAM METAL ROOFING
- 1A NOT USED
- 2 NOT USED
- 3 OVERHANG - SEE STRUCTURAL
- 4 TYP. EXTERIOR DOOR - SEE SCHEDULE SHEET N3.0
- 5 WINDOW - SEE SCHEDULE SHEET N3.0
- 6 NOT USED
- 7 NOT USED
- 8 NOT USED
- 9 DOWNSPOUT SEE DETAIL 8/A5.7 FOR ATTACHMENT
- 10 ROOM ID AND ISA SIGNAGE (BY OTHER) SEE DETAILS 5 & 9/N4.0 - TYP..
- 11 SYNTHETIC STUCCO FINISH
- 11A NOT USED
- 11B NOT USED
- 12 NOT USED
- 13 CONTROL JOINT LOCATION MAY VARY- SIMILAR DETAIL 9/A5.3 @ STUDS
- 14 EXTERIOR LIGHT - SEE ELECTRICAL
- 15 NOT USED
- 16 NOT USED
- 17 NOT USED
- 18 GUTTER - SEE ATTACHMENT DETAIL 3/A2.1 AT METAL STANDING SEAM ROOFING
- 19 MODULAR IDENTIFICATION TAG +90° ABOVE A.F.F.
- 20 NOT USED
- 21 WP/G.F.C.I. @ HVAC UNITS - REFER TO ELECTRICAL PLANS
- 22 NOT USED
- 23 HVAC UNIT
- 24 NOT USED
- 25 SOLA-TUBE - SEE DETAIL 1/M1.6

KEYNOTES

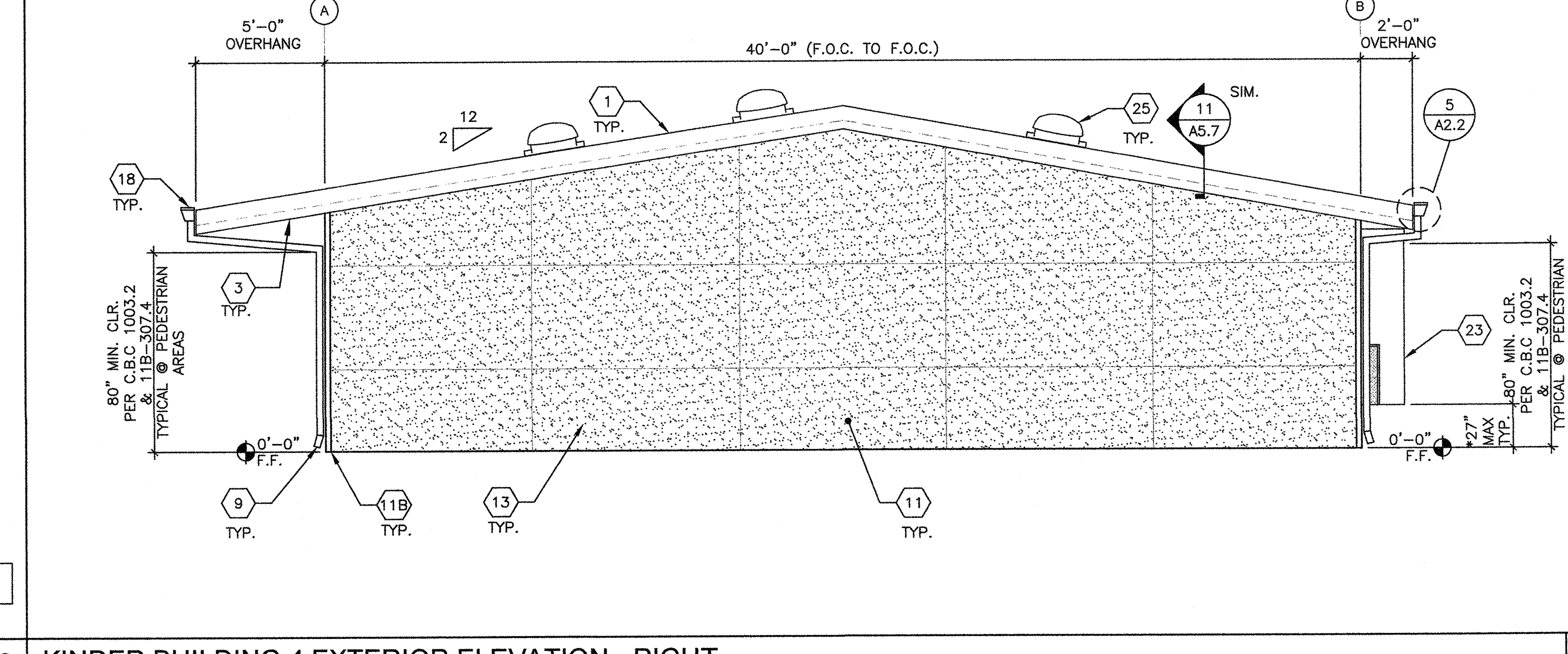
BUILDING SIZE (FT)	TOTAL # OF 12'-0" WIDE MODULES	TOTAL # OF CENTER MODULES	TOTAL FPNW WIDTH*
24'x40'	2	0	23'-6 1/2"
36'x40'	3	1	35'-6 1/2"
48'x40'	4	2	47'-5"
60'x40'	5	3	59'-3 1/2"
72'x40'	6	4	71'-1 1/2"
84'x40'	7	5	82'-1 1/4"
96'x40'	8	6	94'-10"
108'x40'	9	7	106'-8 1/2"
120'x40'	10	8	118'-6 1/2"

NOTES:
1. TOTAL BUILDING WIDTH INCLUDES 1/4" PER MODULE CONSTRUCTION TOLERANCE PER FOUNDATION SHEETS S1.1

BUILDING SIZE SCHEDULE



KINDER BUILDING 4 EXTERIOR ELEVATION - LEFT SCALE: 1/4"=1'-0" 3



KINDER BUILDING 4 EXTERIOR ELEVATION - RIGHT SCALE: 1/4"=1'-0" 4

* FOR ITEMS NOT NOTED & SIMILAR DETAIL CALLOUTS NOT SHOWN FOR THE FRONT ELEVATION, SEE "METAL STANDING SEAM ROOF OPTION" ELEVATION ON DETAIL 1/-.