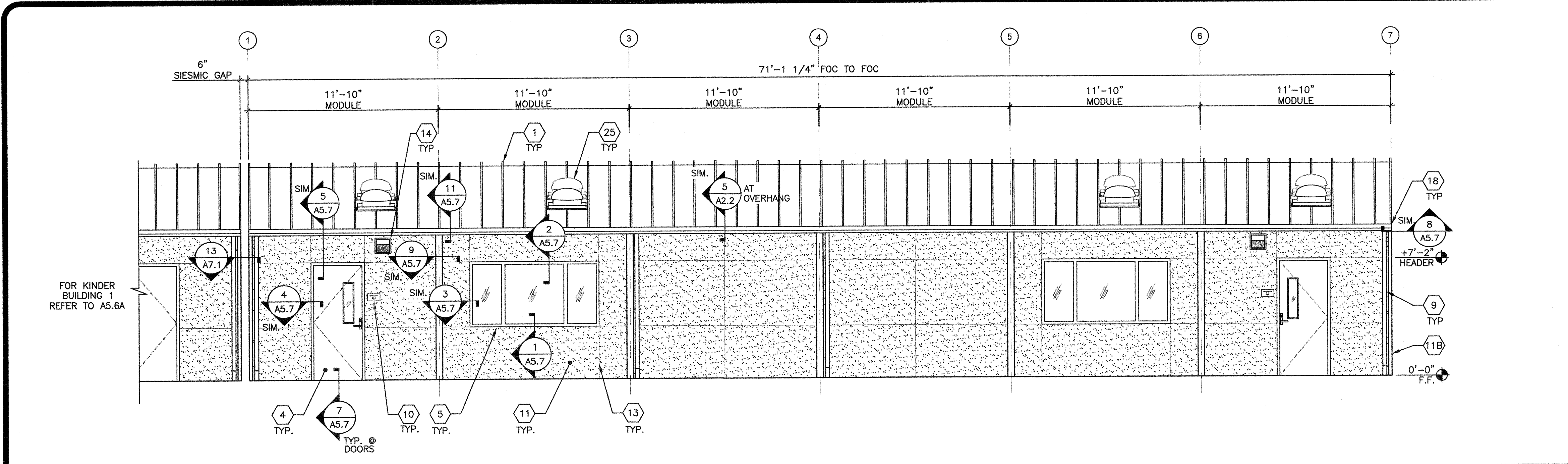


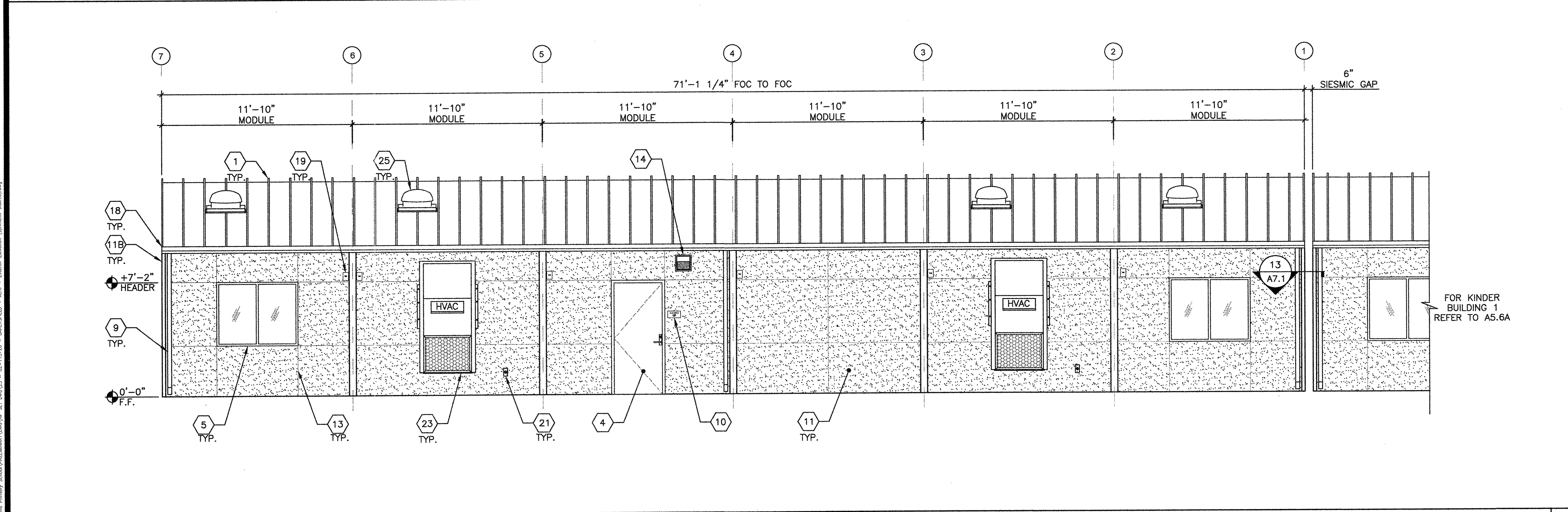
IDENTIFICATION STAMP
DIV. OF THE STATE ARCHITECT
OFFICE OF REGULATION SERVICES
03-120240
AC. V. PLS. SS
DATE JAN 02 2020

AMS
American Modular Systems
787 Spreckels Ave., Manteca, CA 95336
Phone (209) 825-1921 - Fax (209) 825-7018
www.americanmodular.com

INTELLECTUAL PROPERTY & PROPRIETARY RIGHTS STATEMENT
COPYRIGHT © AMERICAN MODULAR SYSTEMS (AMS)
AMS OWNS ALL COPYRIGHT AND OTHER INTELLECTUAL PROPERTY AND PROPRIETARY RIGHTS IN THESE DRAWINGS, SPECIFICATIONS, AND THE MATERIAL CONTAINED HEREIN. CERTAIN ELEMENTS SHOWN IN THESE DOCUMENTS ARE REGISTERED TRADEMARKS OF AMS. ALL PATENTABLE MATERIALS CONTAINED IN THESE DOCUMENTS ARE PROPRIETARY TO AMS AND WILL REMAIN THE SOLE PROPERTY OF AMS. THESE DRAWINGS, SPECIFICATIONS, AND THE MATERIAL CONTAINED HEREIN MAY NOT BE REPRODUCED, TRANSMITTED, COPIED, DISTRIBUTED, MODIFIED, OR OTHERWISE DEPOSED OF (DIRECTLY OR INDIRECTLY) AND MAY NOT BE USED OR REPRODUCED IN ANY MANNER WITHOUT THE WRITTEN CONSENT OF AMS. ANY REPRODUCTION OR USE OF THESE DRAWINGS, SPECIFICATIONS, OR MATERIALS WITHOUT THE WRITTEN CONSENT OF AMS IS EXPRESSLY FORBIDDEN. ANY REPRODUCTION OR USE OF THESE DRAWINGS, SPECIFICATIONS, OR MATERIALS WITHOUT THE WRITTEN CONSENT OF AMS IS EXPRESSLY FORBIDDEN. ANY REPRODUCTION OR USE OF THESE DRAWINGS, SPECIFICATIONS, OR MATERIALS WITHOUT THE WRITTEN CONSENT OF AMS IS EXPRESSLY FORBIDDEN. ANY REPRODUCTION OR USE OF THESE DRAWINGS, SPECIFICATIONS, OR MATERIALS WITHOUT THE WRITTEN CONSENT OF AMS IS EXPRESSLY FORBIDDEN.



KINDER BUILDING 2 EXTERIOR ELEVATION - FRONT SCALE: 1/4"=1'-0" 1



KINDER BUILDING 2 EXTERIOR ELEVATION - REAR SCALE: 1/4"=1'-0" 2

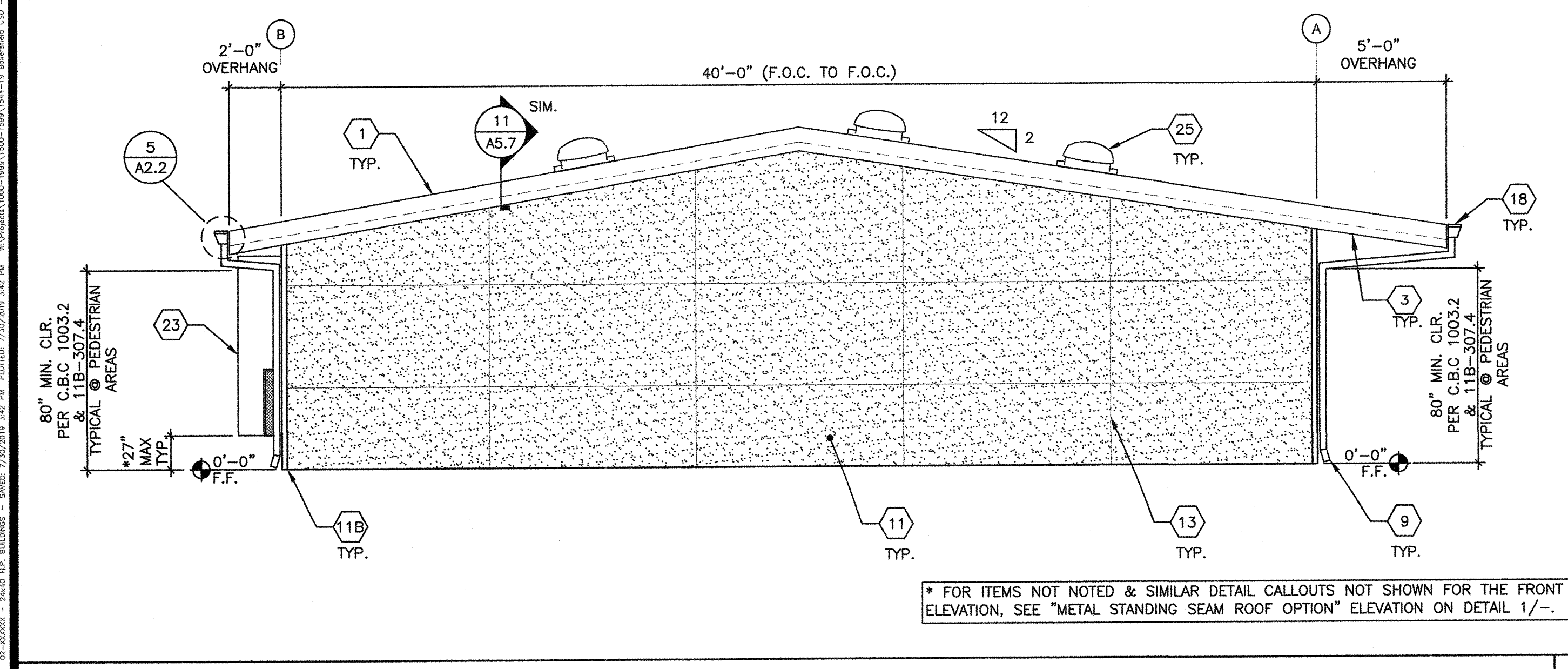
- 1 STANDING SEAM METAL ROOFING
- 1A NOT USED
- 2 NOT USED
- 3 OVERHANG - SEE STRUCTURAL
- 4 TYP. EXTERIOR DOOR - SEE SCHEDULE SHEET N3.0
- 5 WINDOW - SEE SCHEDULE SHEET N3.0
- 6 NOT USED
- 7 NOT USED
- 8 NOT USED
- 9 DOWNSPOUT SEE DETAIL 8/A5.7 FOR ATTACHMENT
- 10 ROOM ID AND ISA SIGNAGE (BY OTHER) SEE DETAILS 5 & 9/N4.0 - TYP..
- 11 SYNTHETIC STUCCO FINISH
- 1A NOT USED
- 1B 1B GA. FLASHING TRIM
- 12 NOT USED
- 13 CONTROL JOINT LOCATION MAY VARY-- SIMILAR DETAIL 9/A5.3 @ STUDS
- 14 EXTERIOR LIGHT - SEE ELECTRICAL
- 15 NOT USED
- 16 NOT USED
- 17 NOT USED
- 18 GUTTER - SEE ATTACHMENT DETAIL 3/A2.1 AT METAL STANDING SEAM ROOFING
- 19 MODULAR IDENTIFICATION TAG +90" ABOVE A.F.F.
- 20 NOT USED
- 21 WP/G.F.C.I. @ HVAC UNITS - REFER TO ELECTRICAL PLANS
- 22 NOT USED
- 23 HVAC UNIT
- 24 NOT USED
- 25 SOLA-TUBE - SEE DETAIL 1/M1.6

KEYNOTES

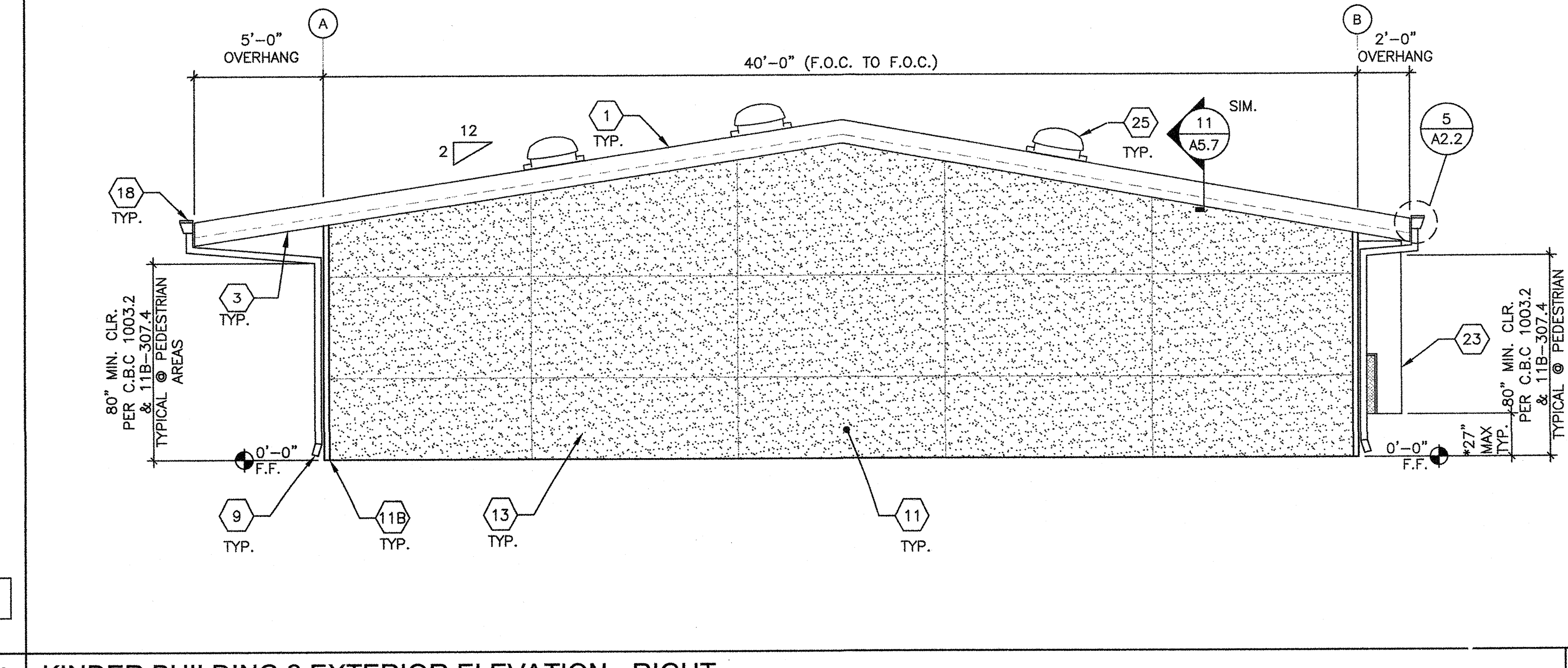
BUILDING SIZE (FT)	TOTAL # OF 12'-0" WIDE MODULES	TOTAL # OF CENTER MODULES	TOTAL FNDM WIDTH
24'x40'	2	0	23'-9 1/2"
36'x40'	3	1	35'-6 1/2"
48'x40'	4	2	47'-5"
60'x40'	5	3	59'-3 1/2"
72'x40'	6	4	71'-1 1/2"
84'x40'	7	5	82'-11 3/4"
96'x40'	8	6	94'-10"
108'x40'	9	7	106'-8 1/2"
120'x40'	10	8	118'-6 1/2"

NOTES:
1. TOTAL BUILDING WIDTH INCLUDES 1/4" PER MODULE CONSTRUCTION TOLERANCE PER FOUNDATION SHEETS S1.1

BUILDING SIZE SCHEDULE



KINDER BUILDING 2 EXTERIOR ELEVATION - LEFT SCALE: 1/4"=1'-0" 3



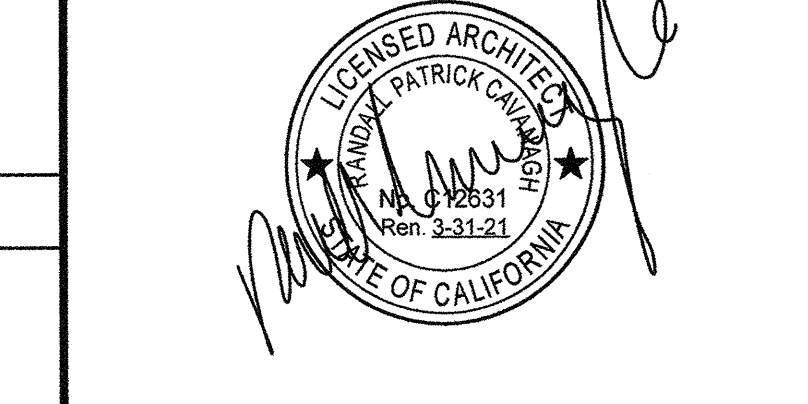
KINDER BUILDING 2 EXTERIOR ELEVATION - RIGHT SCALE: 1/4"=1'-0" 4

PRE-CHECKED SET NAME
24'x40' THRU 120'x40' HIGH PITCH MODULAR BUILDINGS

SITE SPECIFIC PROJECT NAME

SHEET TITLE
TYPICAL EXTERIOR ELEVATION SYNTHETIC - STUCCO OPTION

MANUFACTURER PROFESSIONAL OF RECORD ON PC



THESE DRAWINGS ARE PRELIMINARY AND NOT FOR CONSTRUCTION UNLESS SHOWN AS SUCH BY THE PROJECT OF RECORD.
PROJECT SPECIFIC STATE AGENCY APPROVAL

IDENTIFICATION STAMP
DIV. OF THE STATE ARCHITECT
02-117846
AC. V. PLS. SS
DATE AUG - 2 2019

ORIGINAL PC STATE AGENCY APPROVAL

BASED ON PC# 02-115726
PRE-CHECK (PC) DOCUMENT
CODE: 2016 CBC
A SEPARATE PROJECT APPLICATION FOR CONSTRUCTION IS REQUIRED.

REVISIONS
DRAWN BY: AH
SCALE: AS NOTED
DATE: 06/20/19
SHEET NUMBER

A5.6B-02