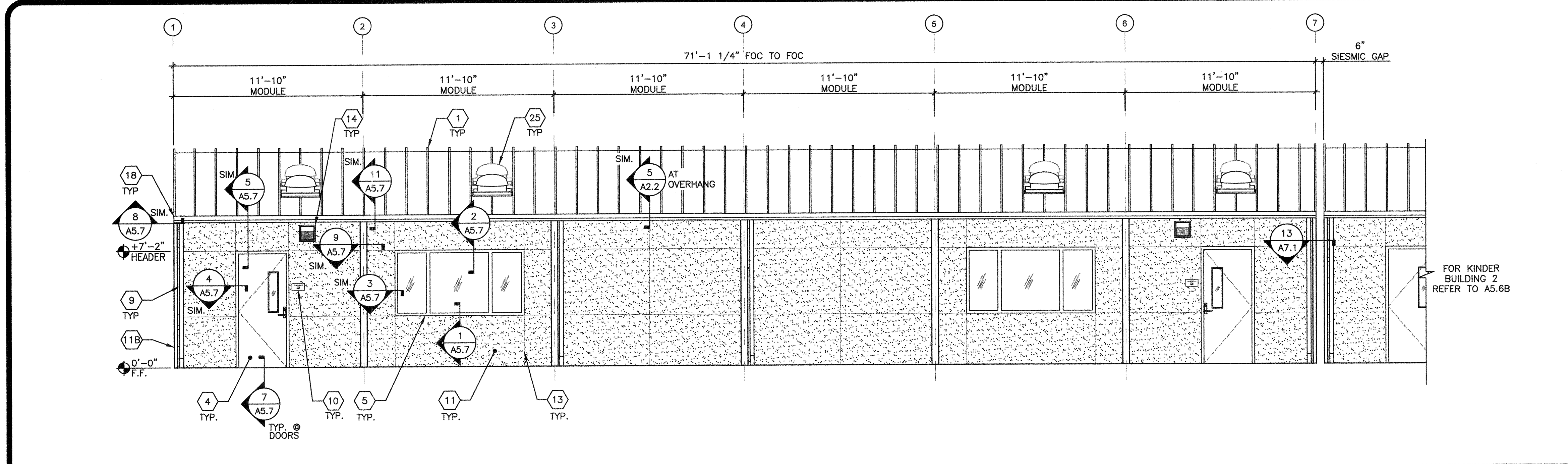
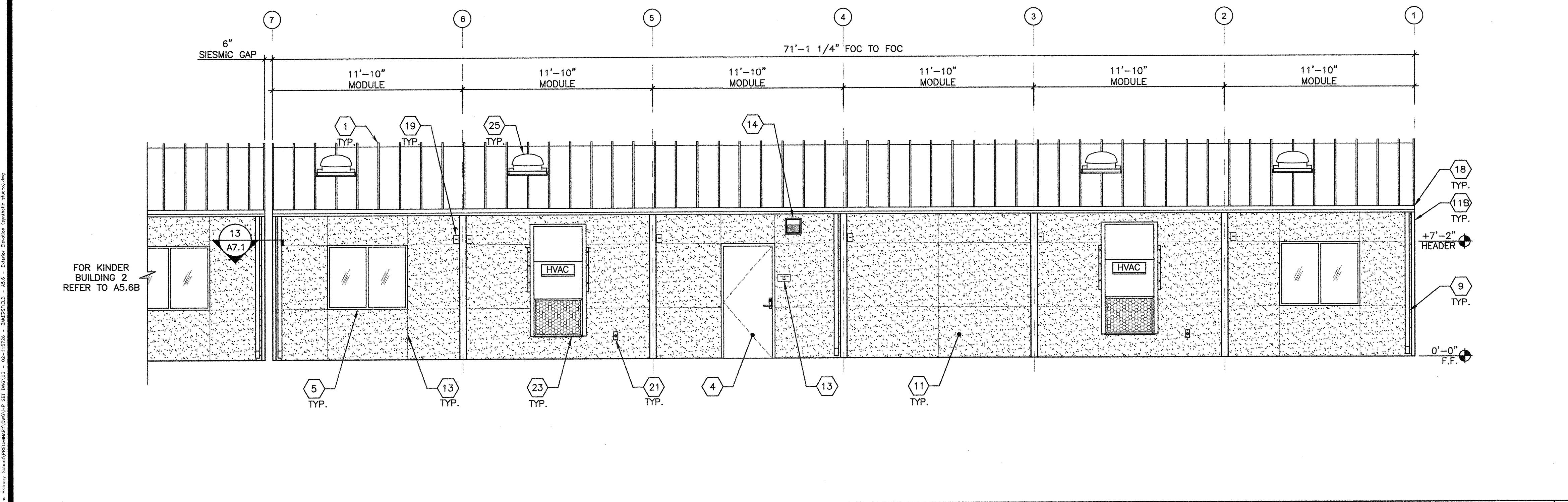


INTELLECTUAL PROPERTY & PROPRIETARY RIGHTS STATEMENT
COPYRIGHT © AMERICAN MODULAR SYSTEMS (AMS) AND ALL OTHER INTELLECTUAL PROPERTY AND PROPRIETARY RIGHTS IN THESE DRAWINGS, SPECIFICATIONS, AND THE MATERIAL CONTAINED HEREIN AND/OR SHOWN IN THESE DOCUMENTS ARE REGISTERED TRADEMARKS OF AMS. ALL PATENTABLE MATERIALS CONTAINED IN THESE DOCUMENTS AND/OR SHOWN HEREIN WILL REMAIN THE SOLE PROPERTY OF AMS. THESE DRAWINGS, SPECIFICATIONS, AND THE MATERIAL CONTAINED HEREIN MAY NOT BE REPRODUCED, TRANSMITTED, COPIED, DISTRIBUTED, MODIFIED, OR OTHERWISE DISPOSED OF (DIRECTLY OR INDIRECTLY) AND MAY NOT BE USED (IN WHOLE OR IN PART) TO ASSIST IN THE CONSTRUCTION, DESIGN, OR OTHER MAKING OF, OR FOR THE PURPOSE OF FURNISHING ANY INFORMATION FOR THE CONSTRUCTION DESIGN, OR OTHER MAKING OF, ANY BUILDINGS (MODULAR OR OTHERWISE), DRAWINGS, SPECIFICATIONS, POINTS, APPROVALS, OR PERITS THEREON, EXCEPT AS EXPRESSLY PERMITTED BY WRITTEN CONSENT OR IN A WRITTEN AGREEMENT WITH AMS. SUBMITTAL OR DISTRIBUTION TO MEET OFFICIAL REGULATORY REQUIREMENTS WILL NOT BE CONSIDERED AS IMPLICATION OR ENDORSEMENT OF AMS'S COPYRIGHT OR OTHER INTELLECTUAL PROPERTY OR PROPRIETARY RIGHTS.



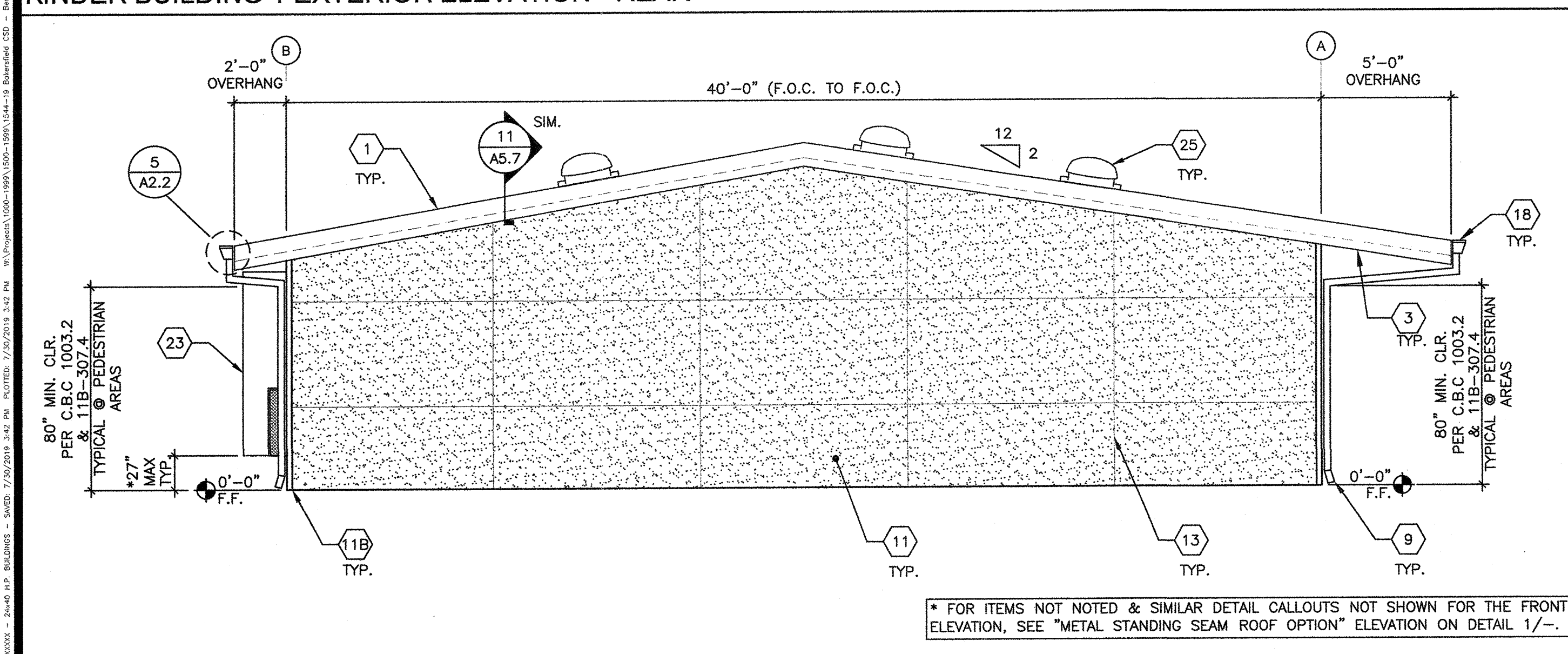
KINDER BUILDING 1 EXTERIOR ELEVATION - FRONT

SCALE: 1/4"=1'-0" 1



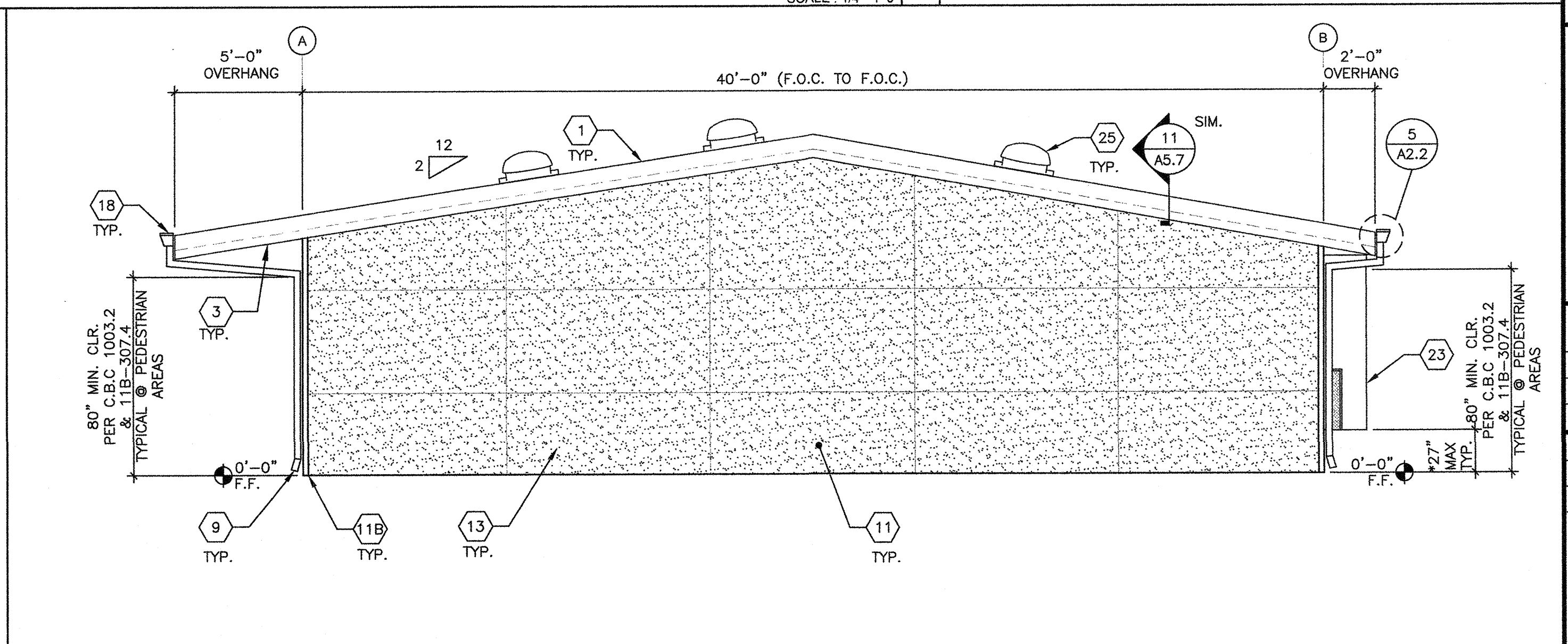
KINDER BUILDING 1 EXTERIOR ELEVATION - REAR

SCALE: 1/4"=1'-0" 2



KINDER BUILDING 1 EXTERIOR ELEVATION - LEFT

SCALE: 1/4"=1'-0" 3



KINDER BUILDING 1 EXTERIOR ELEVATION - RIGHT

SCALE: 1/4"=1'-0" 4

- 1 STANDING SEAM METAL ROOFING
- 1A NOT USED
- 2 NOT USED
- 3 OVERHANG - SEE STRUCTURAL
- 4 TYP. EXTERIOR DOOR - SEE SCHEDULE SHEET N3.0
- 5 WINDOW - SEE SCHEDULE SHEET N3.0
- 6 NOT USED
- 7 NOT USED
- 8 NOT USED
- 9 DOWNSPOUT SEE DETAIL 8/A5.7 FOR ATTACHMENT
- 10 ROOM ID AND USA SIGNAGE (BY OTHER) SEE DETAILS 5 & 9/N4.0 - TYP..
- 11 SYNTHETIC STUCCO FINISH
- 11A NOT USED
- 11B 18 GA. FLASHING TRIM
- 12 NOT USED
- 13 CONTROL JOINT LOCATION MAY VARY- SIMILAR DETAIL 9/A5.3 @ STUDS
- 14 EXTERIOR LIGHT - SEE ELECTRICAL
- 15 NOT USED
- 16 NOT USED
- 17 NOT USED
- 18 GUTTER - SEE ATTACHMENT DETAIL 3/A2.1 AT METAL STANDING SEAM ROOFING
- 19 MODULAR IDENTIFICATION TAG +90" ABOVE A.F.F.
- 20 NOT USED
- 21 WP/G.F.C.I. @ HVAC UNITS - REFER TO ELECTRICAL PLANS
- 22 NOT USED
- 23 HVAC UNIT
- 24 NOT USED
- 25 SOLA-TUBE - SEE DETAIL 1/M1.6

KEYNOTES

BUILDING SIZE (FT)	TOTAL # OF 12'-0" WIDE MODULES	TOTAL # OF CENTER MODULES	TOTAL FND. WIDTH
24'x40'	2	0	23'-6 1/2"
36'x40'	3	1	35'-6 1/2"
48'x40'	4	2	47'-5"
60'x40'	5	3	59'-3 1/2"
72'x40'	6	4	71'-1 1/2"
84'x40'	7	5	82'-11 1/4"
96'x40'	8	6	94'-10"
108'x40'	9	7	106'-8 1/2"
120'x40'	10	8	118'-6 1/2"

NOTES:
1. TOTAL BUILDING WIDTH INCLUDES 1/4" PER MODULE CONSTRUCTION TOLERANCE PER FOUNDATION SHEETS S1.1

BUILDING SIZE SCHEDULE

PRE-CHECKED SET NAME
24'x40' THRU 120'x40' HIGH PITCH MODULAR BUILDINGS

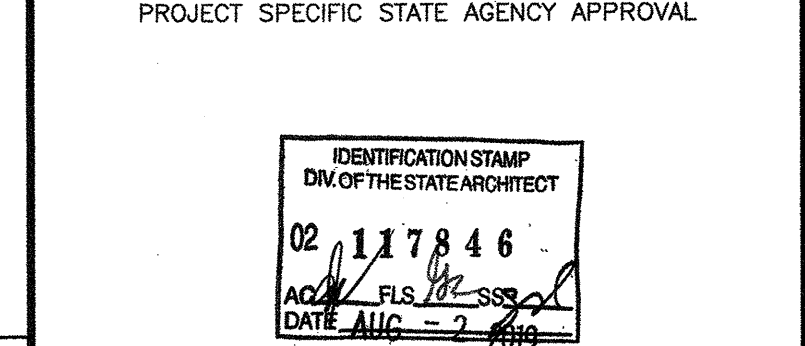
SITE SPECIFIC PROJECT NAME

SHEET TITLE
TYPICAL EXTERIOR ELEVATION SYNTHETIC - STUCCO OPTION

MANUFACTURER PROFESSIONAL OF RECORD ON PC



THESE DRAWINGS ARE PRELIMINARY AND NOT FOR CONSTRUCTION UNLESS STAMPED AS ISSUED BY THE ENGINEER OF RECORD.
PROJECT SPECIFIC STATE AGENCY APPROVAL



ORIGINAL PC STATE AGENCY APPROVAL

BASED ON PC# 02-115726
PRE-CHECK (PC) DOCUMENT
CODE: 2016 CBC
A SEPARATE PROJECT APPLICATION FOR CONSTRUCTION IS REQUIRED.

REVISIONS
DRAWN BY: AH
SCALE: AS NOTED
DATE: 06/20/19
SHEET NUMBER

A5.6A-02