

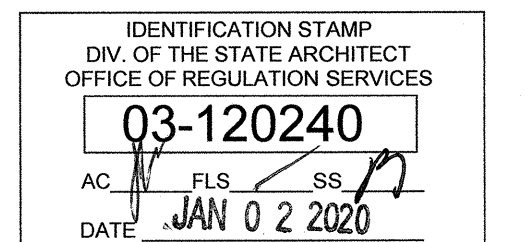
SHEET NOTES

NOTES ON THIS SHEET ARE TO BE USED ON THIS SHEET ONLY.

- ① CEILING DATA. SEE TITLE SHEET FOR ADDITIONAL INFORMATION.
- ② CEILING MOUNTED SPEAKER. SEE TITLE SHEET FOR ADDITIONAL INFORMATION.
- ③ DATA COIL. SEE TITLE SHEET FOR ADDITIONAL INFORMATION.

AGENCY INFORMATION:

AGENCY TRACKING NO. 63321-356
FILE NO. 15-6



SEAL

COPYRIGHT:

Any reproduction or distribution for any purpose other than authorized by IBI Group is forbidden.

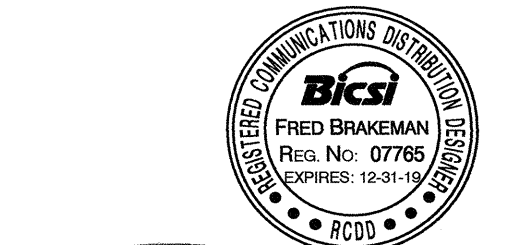
COPYRIGHT 2019 IBI GROUP

REVISIONS

NO.	DATE SUBMITTED	DATE APPROVED	DESCRIPTION

CONSULTANT

Fred Abrahamson



INFINITY
COMMUNICATIONS AND CONSULTING
PO BOX 6069, BAKERSFIELD CA 93386
Ph: 661.715-1849 Fx: 661.715-1841
www.Infinitycomm.com

PRIME CONSULTANT

IBI ARCHITECTURE PLANNING
San Luis Obispo
4119 Broad Street, Suite 210
San Luis Obispo, CA 93401
805.546.0433 fax: 805.546.0504
ibigroup.com

BAKERSFIELD CITY SCHOOL DISTRICT



BESSIE OWENS E.S. KINDERGARTEN MODULAR BUILDINGS

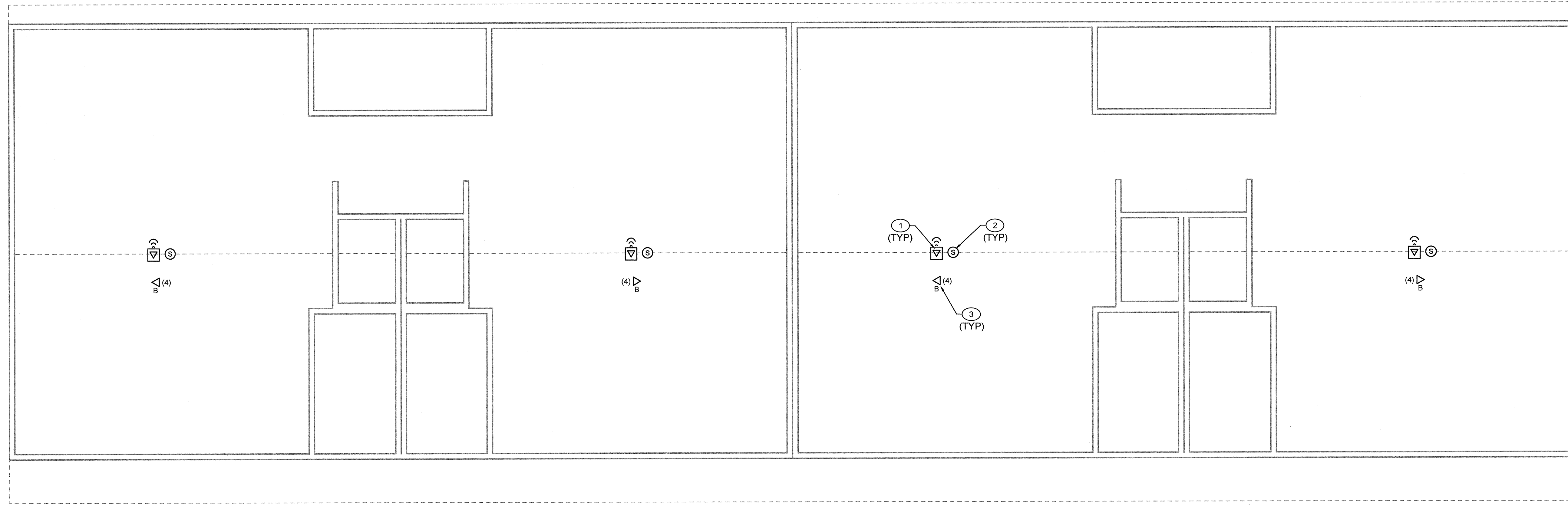
OPSC or OSHPD PROJ. NO.	N/A
PROJECT NO.	118932
DRAWN BY:	Author
CHK'D BY:	Checker
ISSUE DATE:	08/27/2019

SHEET TITLE

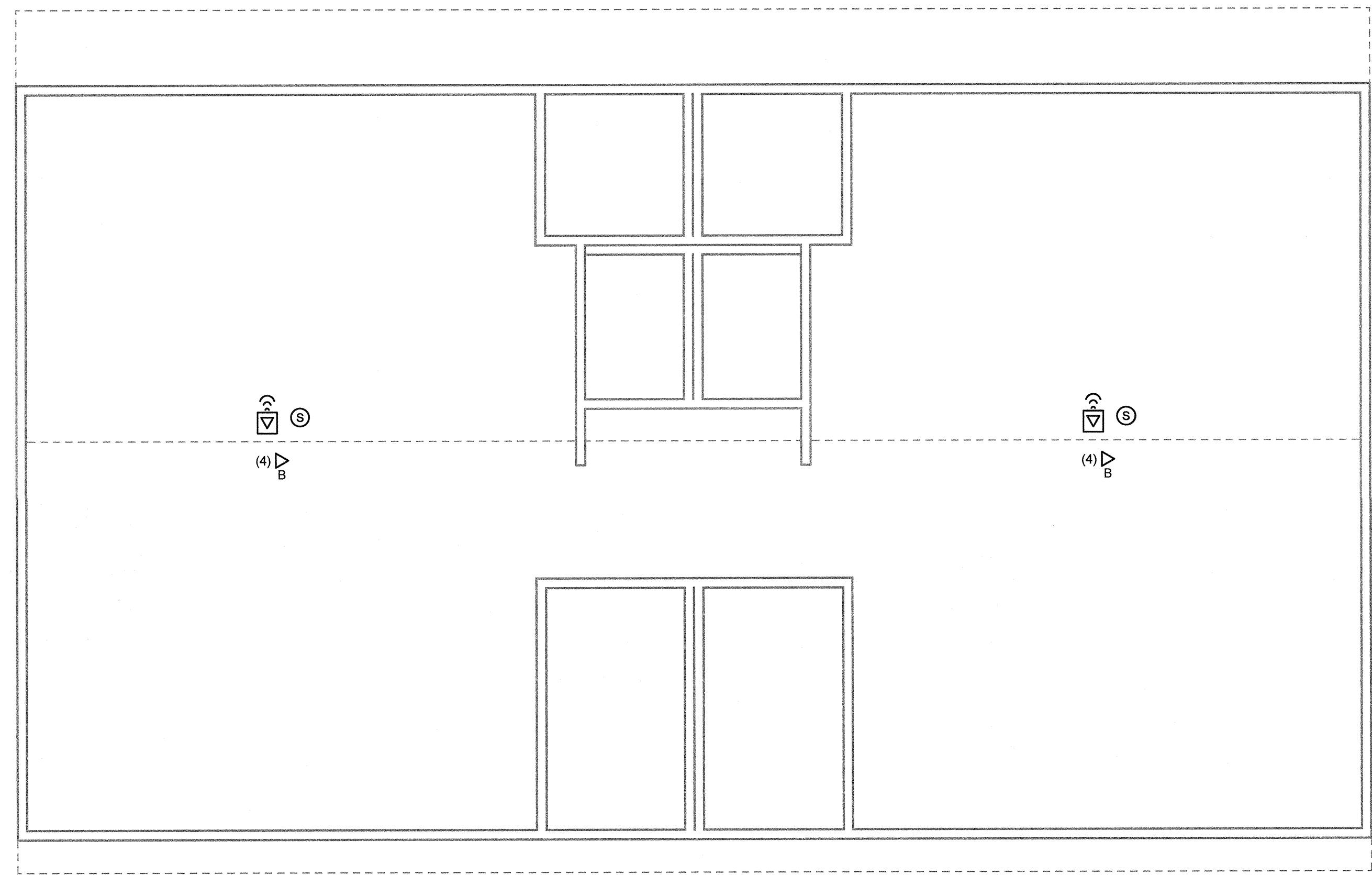
KINDER BUILDINGS CEILING PLAN

SHEET NUMBER

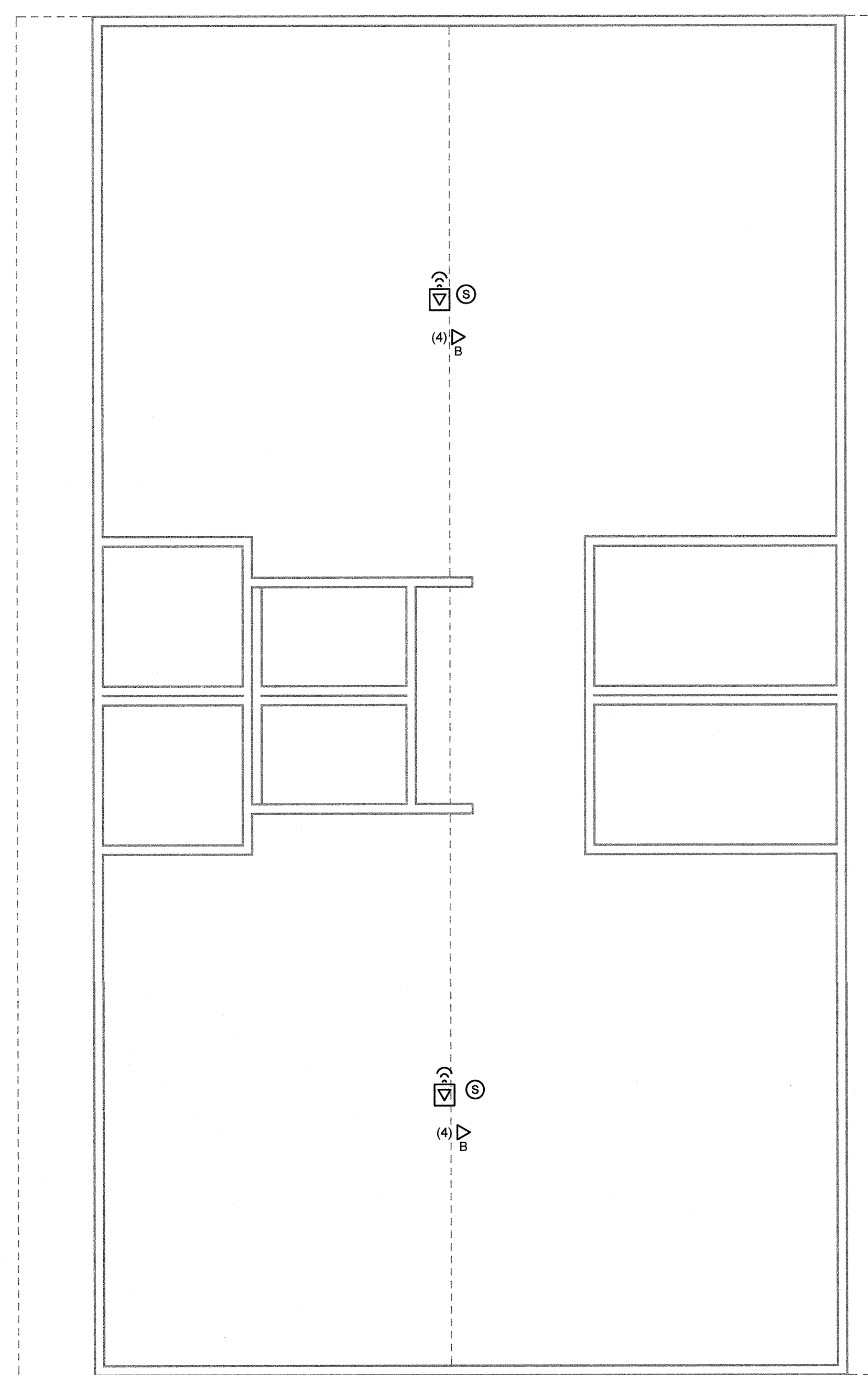
T0.3



1 KINDER BUILDING K1 & K2 - CEILING PLAN
3/16" = 1'-0"



2 KINDER BUILDING K4 - CEILING PLAN
3/16" = 1'-0"



3 KINDER BUILDING K3 - CEILING PLAN
3/16" = 1'-0"

CONSTRUCTION DOCUMENTS

C:\Users\ndemuz\Documents\ATW-18832-SITE-06-03-19-Y2019_CENTRAL_08en.txd.rvt
2019-10-21 12:02:28
PLOT DATE