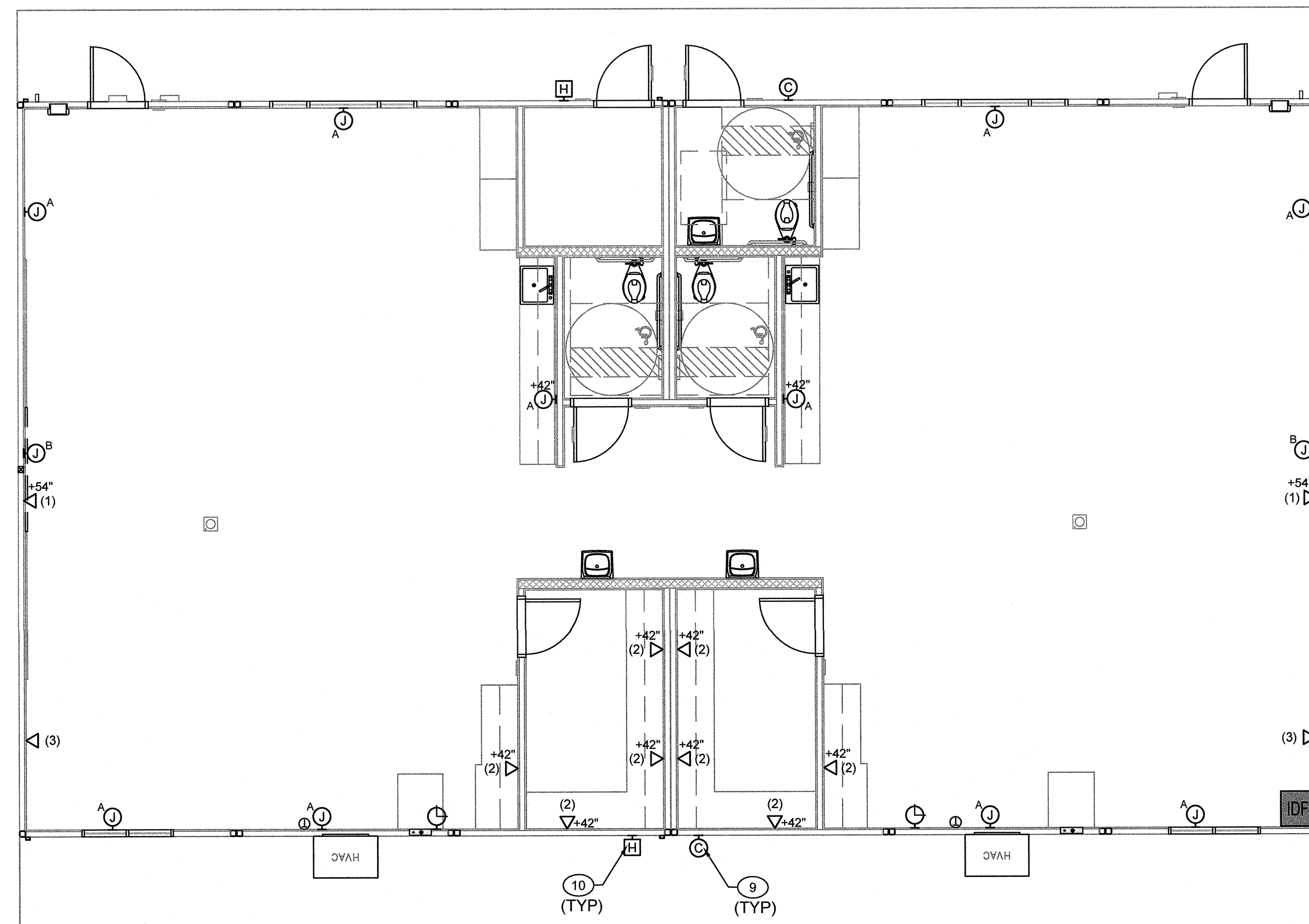
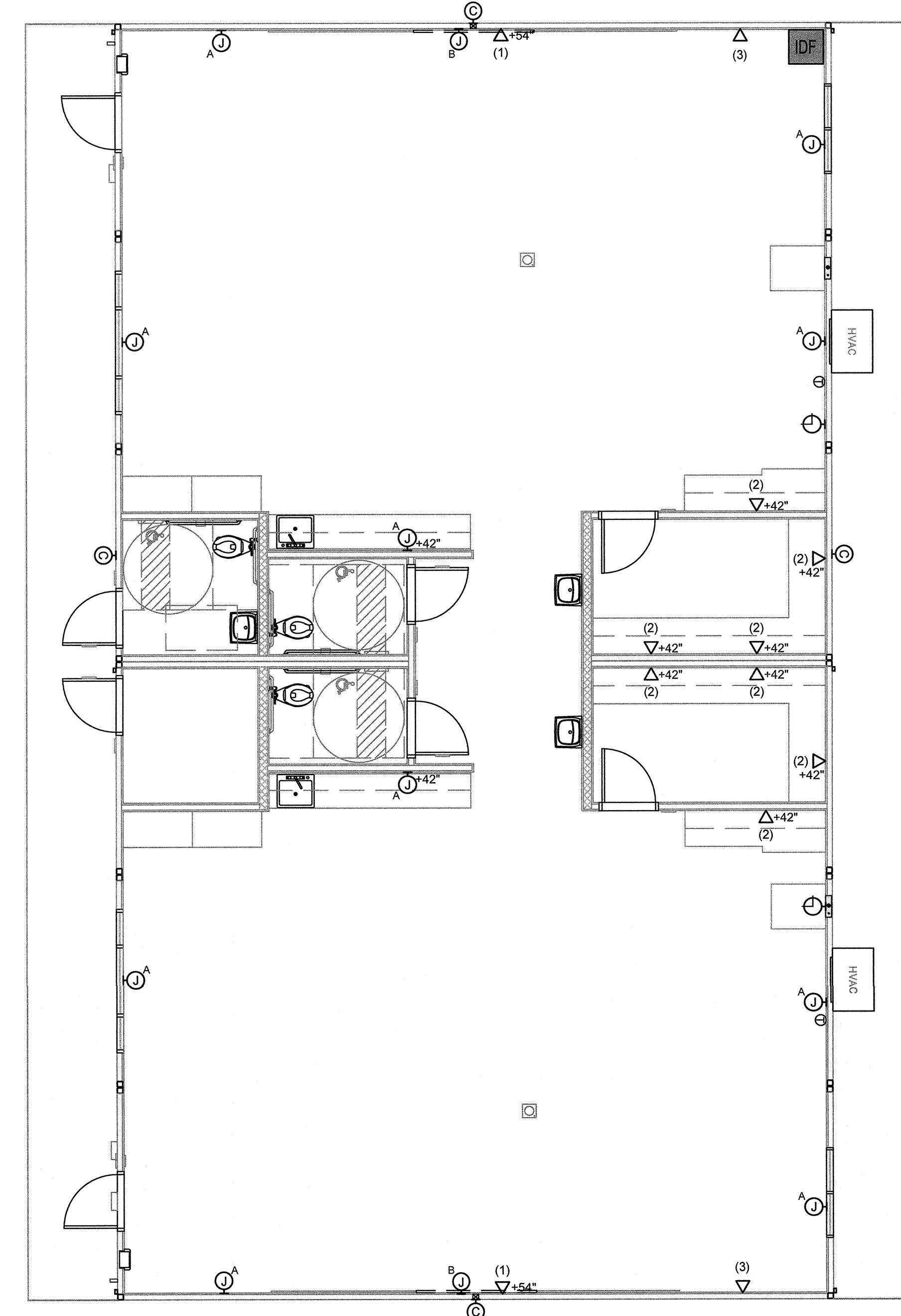


1 KINDER BUILDING K1 & K2 - FLOOR PLAN  
3/16" = 1'-0"



2 KINDER BUILDING K4 - FLOOR PLAN  
3/16" = 1'-0"



3 KINDER BUILDING K3 - FLOOR PLAN  
3/16" = 1'-0"

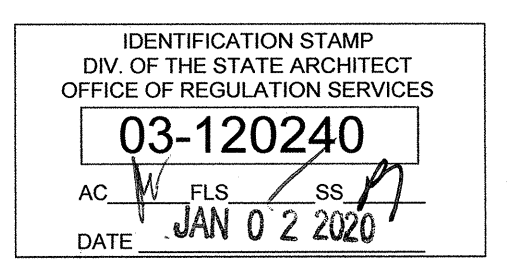
**SHEET NOTES**

NOTES ON THIS SHEET ARE TO BE USED ON THIS SHEET ONLY.

- 1 DATA OUTLET. SEE TITLE SHEET FOR ADDITIONAL INFORMATION.
- 2 DATA OUTLET @42". SEE TITLE SHEET FOR ADDITIONAL INFORMATION.
- 3 DATA OUTLET @54". SEE TITLE SHEET FOR ADDITIONAL INFORMATION.
- 4 EMPTY JUNCTION BOX A. SEE TITLE SHEET FOR ADDITIONAL INFORMATION.
- 5 EMPTY JUNCTION BOX B. SEE TITLE SHEET FOR ADDITIONAL INFORMATION.
- 6 (N) REAX IDF CABINET. INSTALL PER DETAIL 5.6/T4.1. SEE TITLE SHEET FOR ADDITIONAL INFORMATION.
- 7 WIRELESS WALL CLOCK. INSTALL PER DETAIL 3/T4.2. SEE TITLE SHEET FOR ADDITIONAL INFORMATION.
- 8 (N) 2" CONDUIT STUB. SEE TITLE SHEET FOR ADDITIONAL INFORMATION.
- 9 WALL MOUNTED CAMERA. SEE TITLE SHEET FOR ADDITIONAL INFORMATION.
- 10 INTERCOM HORN. INSTALL PER DETAIL 3/T4.2. SEE TITLE SHEET FOR ADDITIONAL INFORMATION.

AGENCY INFORMATION:

AGENCY TRACKING NO. 63321-356  
FILE NO. 15-6



SEAL

**COPYRIGHT:**  
Any reproduction or distribution for any purpose other than authorized by IBI Group is forbidden.

COPYRIGHT 2019 IBI GROUP

REVISIONS			
NO.	DATE SUBMITTED	DATE APPROVED	DESCRIPTION

CONSULTANT

*Fred Proberman*

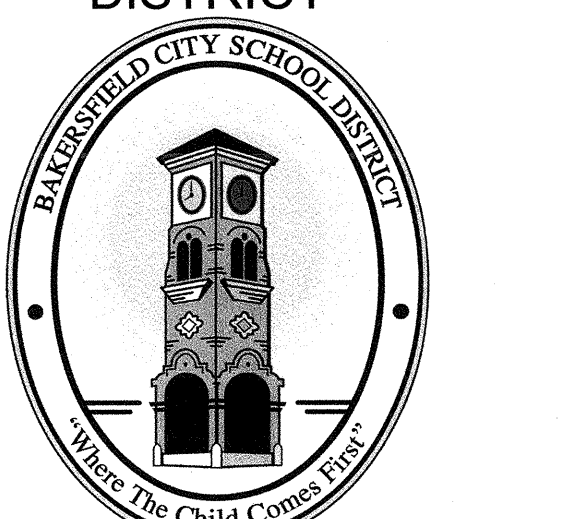


**INFINITY**  
COMMUNICATIONS AND CONSULTING  
PO BOX 6069, BAKERSFIELD CA 93386  
Ph: 661.716-1849 Fx: 661.716-1841  
www.Infinitycomm.com

PRIME CONSULTANT

**IBI** ARCHITECTURE PLANNING  
San Luis Obispo  
4119 Broad Street, Suite 210  
San Luis Obispo, CA 93401  
805.546.0433 fax: 805.546.0504  
ibigroup.com

BAKERSFIELD CITY SCHOOL DISTRICT



**BESSIE OWENS E.S. KINDERGARTEN MODULAR BUILDINGS**

815 POTOMAC AVE, BAKERSFIELD, CA 93307

OPSC or OSHPD PROJ. NO:	N/A
PROJECT NO:	118932
DRAWN BY:	Author
CHKD BY:	Checker
ISSUE DATE:	08/27/2019

SHEET TITLE

**KINDER BUILDINGS FLOOR PLAN**

SHEET NUMBER

**T0.2**

CONSTRUCTION DOCUMENTS

C:\Users\ben.nic\Documents\B1W\18832-31TE-06-03-19-02018\_CENTRAL\_japan.usr.rvt  
2019-10-21 12:02:08  
PLOT DATE