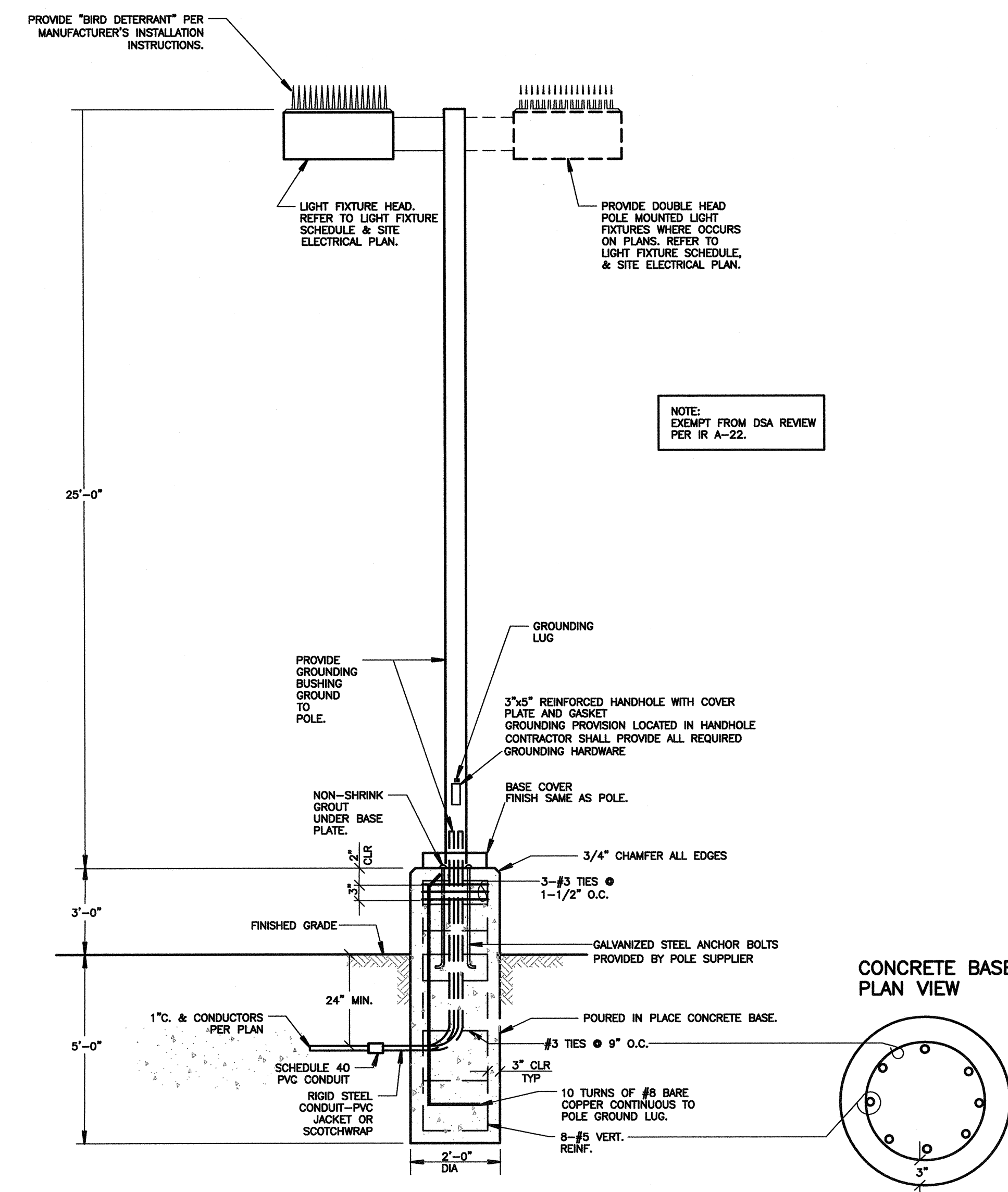
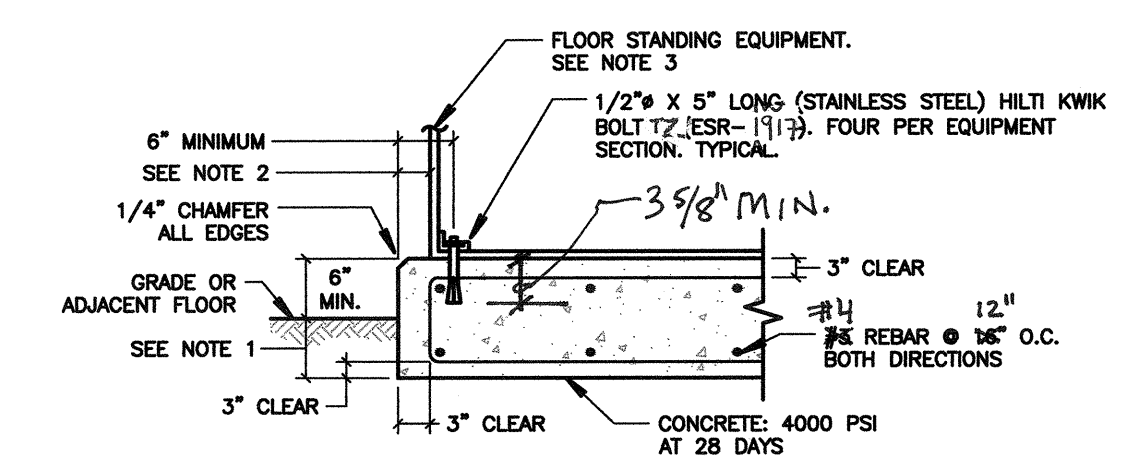


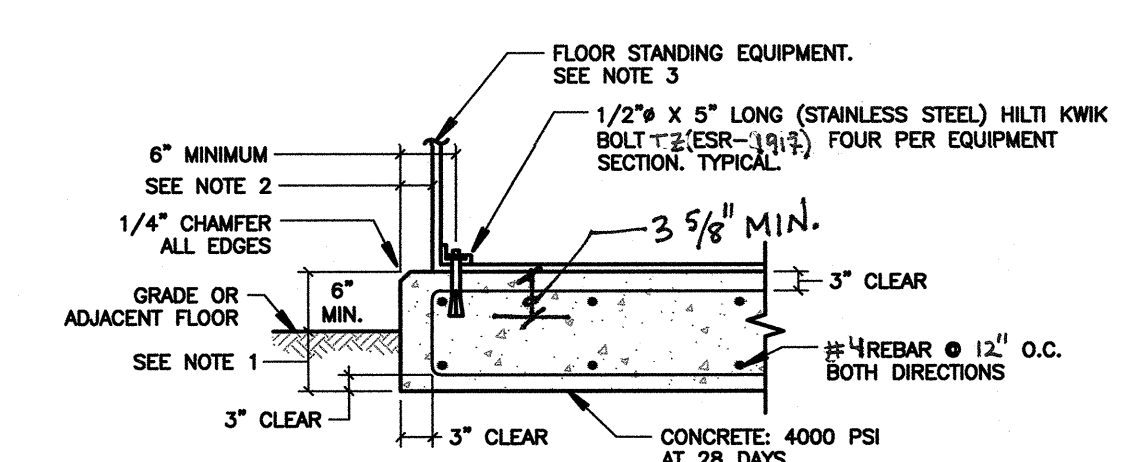
**4** TYPICAL SAFETY SWITCH MOUNTING  
NOT TO SCALE



**1** TYPICAL POLE LIGHT DETAIL  
NOT TO SCALE



**2** I-PAC #1 EQUIPMENT PAD DETAIL  
SCALE: NOT TO SCALE



**3** I-PAC #2 EQUIPMENT PAD DETAIL  
SCALE: NOT TO SCALE

AGENCY INFORMATION:

AGENCY TRACKING NO. 63321-356  
FILE NO. 15-6

IDENTIFICATION STAMP  
DIV. OF THE STATE ARCHITECT  
OFFICE OF REGULATION SERVICES  
**03-120240**  
AC. 1/1/19 PLS. 8/1/19  
DATE **JAN 02 2020**

SEAL

COPYRIGHT: Any reproduction or distribution for any purpose other than authorized by IBI Group is forbidden.

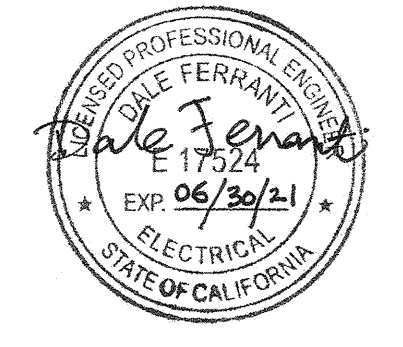
COPYRIGHT 2019 IBI GROUP

REVISIONS

NO.	DATE SUBMITTED	DATE APPROVED	DESCRIPTION

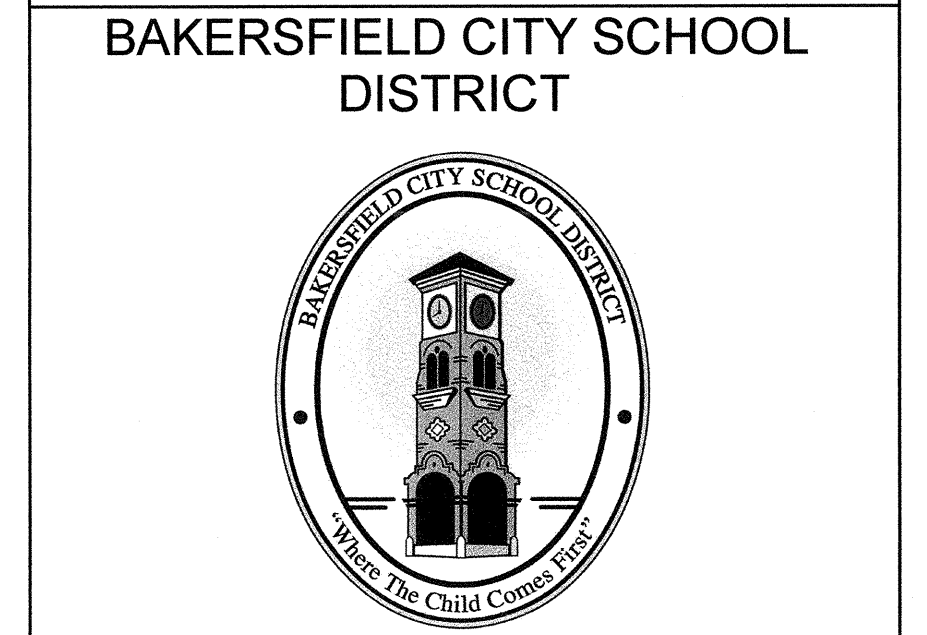
CONSULTANT

**FERRANTI ENGINEERING**  
CONSULTING  
ELECTRICAL ENGINEERS  
1211 MARICOPA HWY,  
SUITE 250  
OJAI, CA 93023  
(805) 705-4772  
DALEFERRANTI@LIVE.COM



PRIME CONSULTANT

**IBI** ARCHITECTURE  
PLANNING  
San Luis Obispo  
4119 Broad Street, Suite 210  
San Luis Obispo, CA 93401  
805.548.0433  
fax: 805.548.0504  
ibigroup.com



**BESSIE OWENS E.S. KINDERGARTEN  
MODULAR BUILDINGS**  
815 POTOMAC AVE, BAKERSFIELD, CA 93307

OPSC or OSHPD PROJ. NO. N/A  
PROJECT NO. 118932  
DRAWN BY: V.Z.  
CHK'D BY: D.F.  
ISSUE DATE: 10/29/2019  
SHEET TITLE

**ELECTRICAL DETAILS  
SHEET #3**

SHEET NUMBER

**E502**

CONSTRUCTION DOCUMENTS