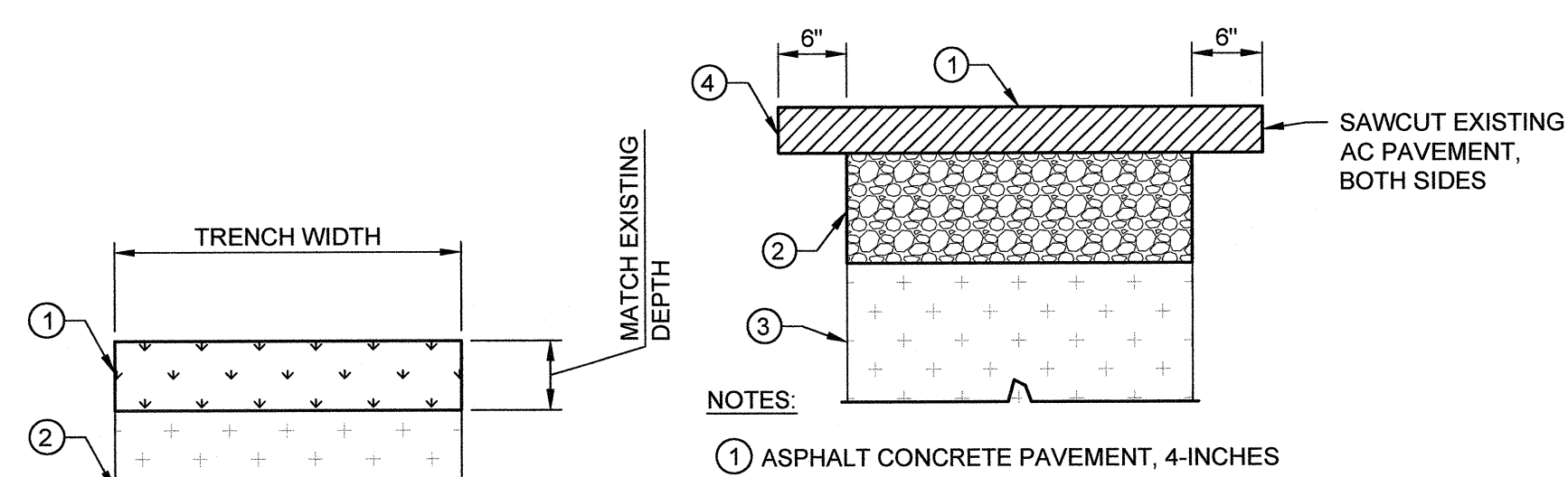


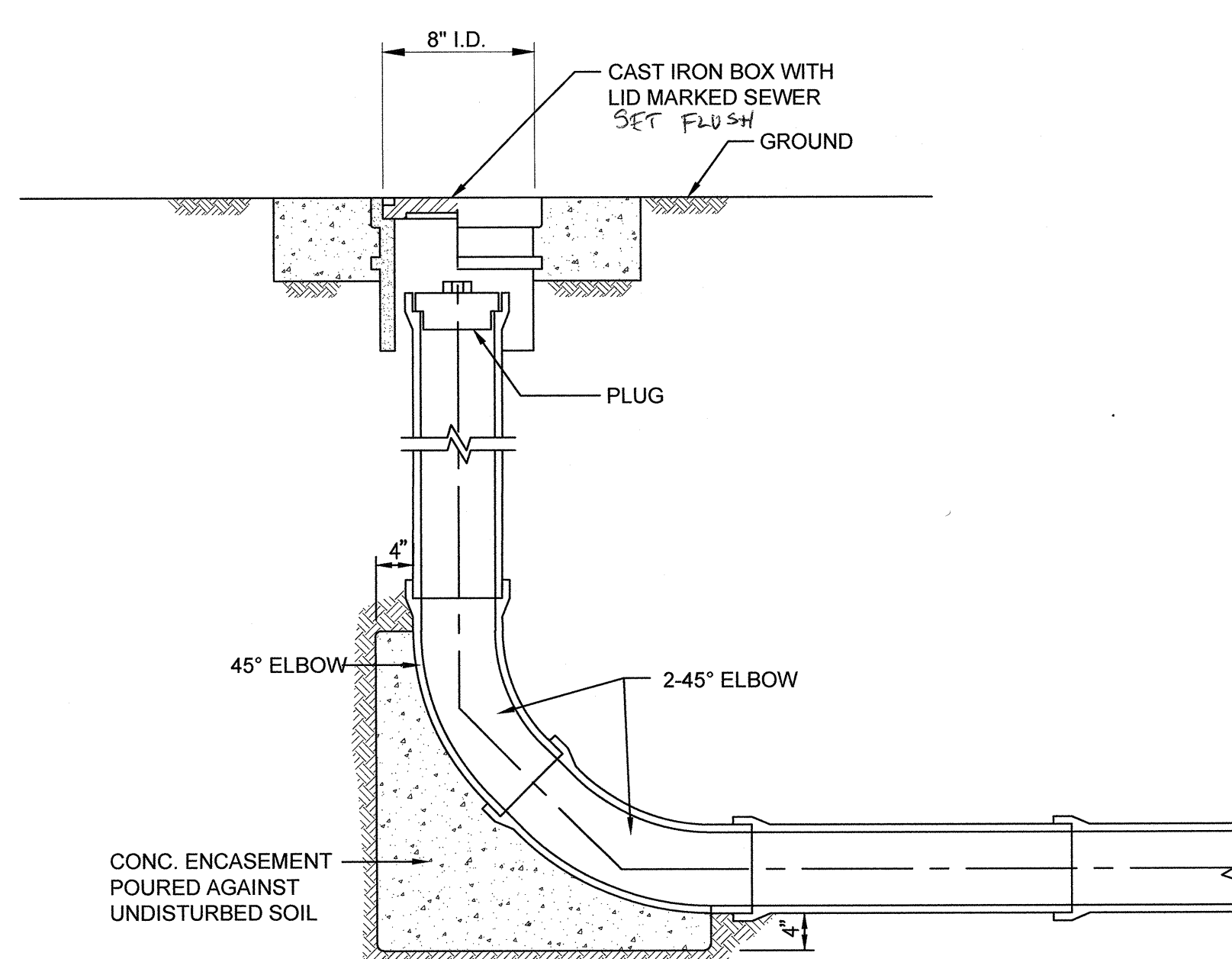
- NOTES:**
- MINIMUM COVER OVER ALL WATER DISTRIBUTION MAINS TO BE 3' AS MEASURED FROM FINISH GRADE.
  - PERCENT RELATIVE COMPACTION IS THE PERCENT OF THE MAX. DRY DENSITY AS DETERMINED BY ASTM D-1557 (5 LAYER)

**1 WATER PIPE BEDDING AND BACKFILL DETAILS**  
NTS

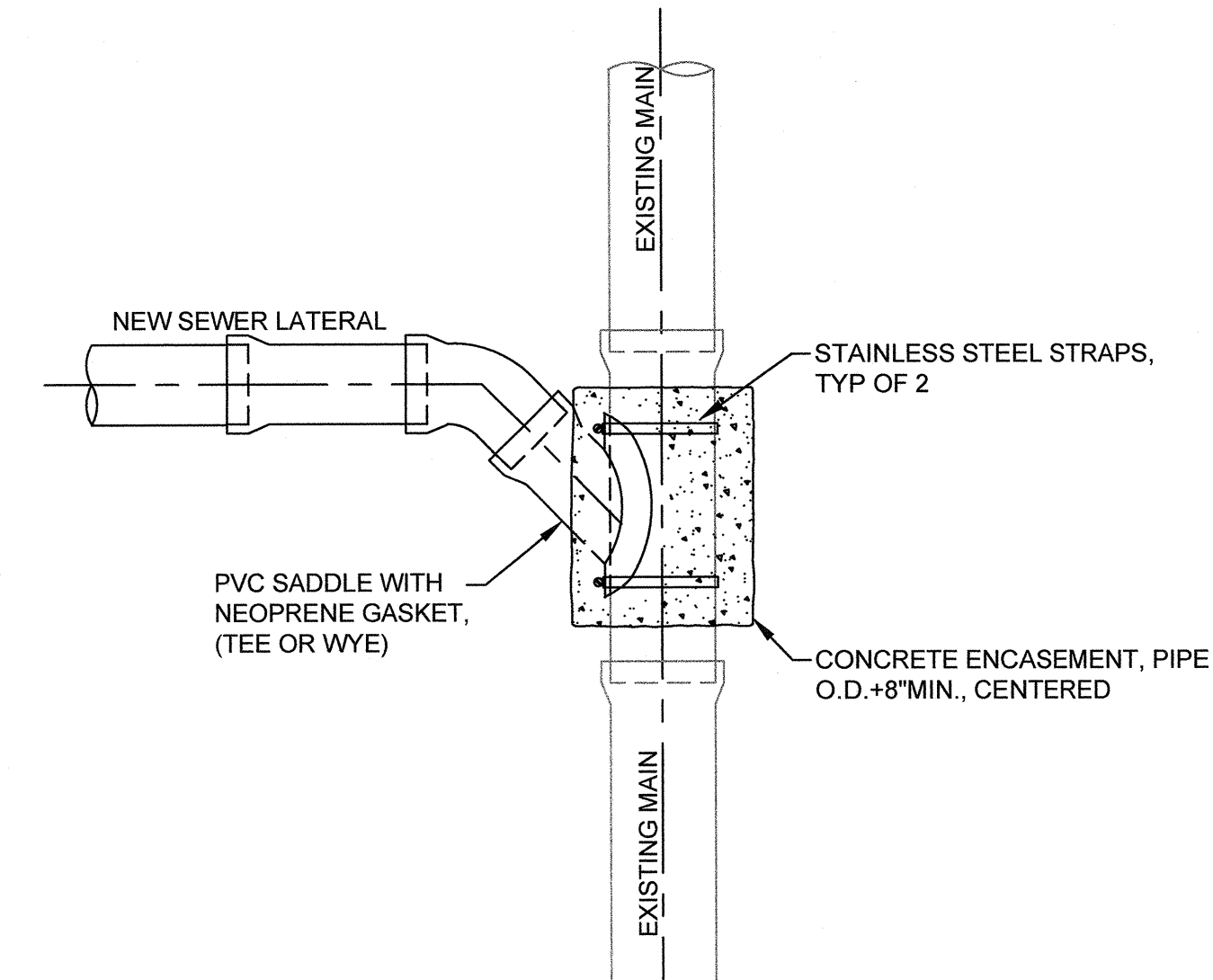


- NOTES:**
- ASPHALT CONCRETE PAVEMENT, 4-INCHES
  - CLASS II AGGREGATE BASE COMPACTED TO 90% RELATIVE COMPACTION, 9.5-INCHES THICK
  - FOR TRENCHES, SEE DETAIL 1. SCARIFY 12-INCHES AND COMPACT TO 90% RELATIVE COMPACTION.
  - FOR TRENCH REPAIR, REPLACE 6-INCHES ON EITHER SIDE OF TRENCH.
  - REPLACE PAVEMENT STRIPING IN KIND.

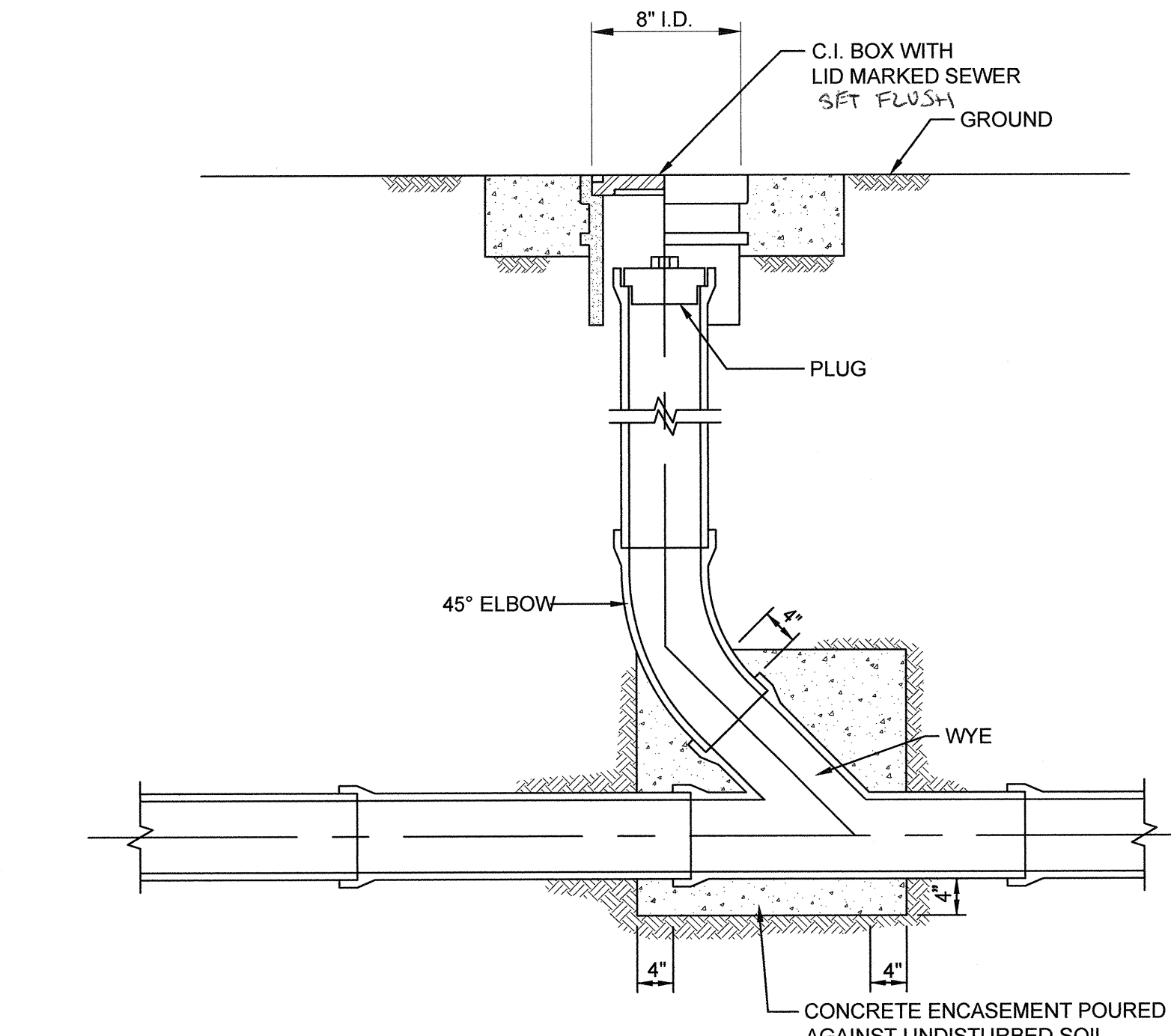
**2 TRENCH ZONE PER DETAIL 1.**  
**3 ASPHALT CONCRETE PAVEMENT**  
NTS



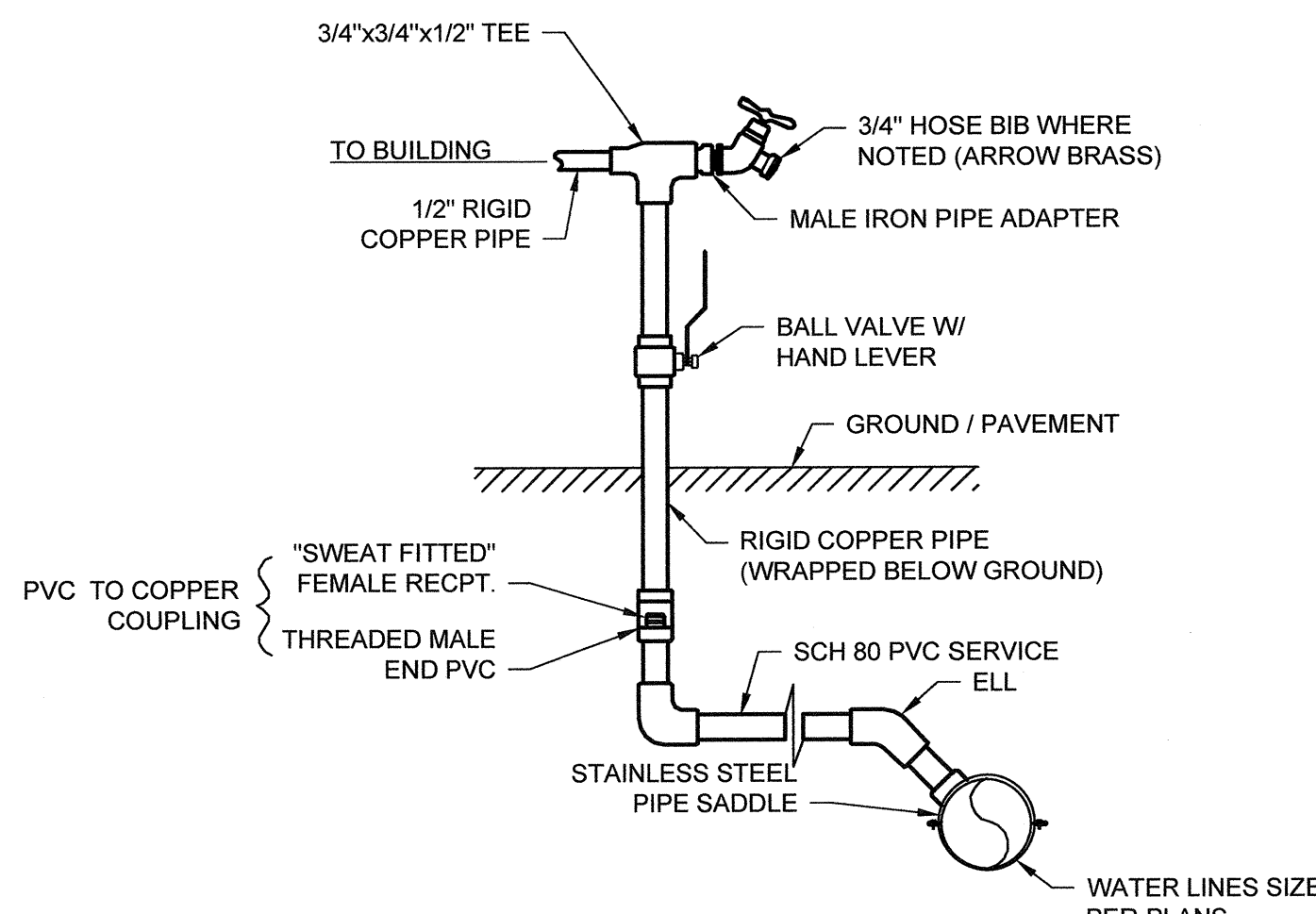
**4 END OF LINE CLEANOUT**  
NTS



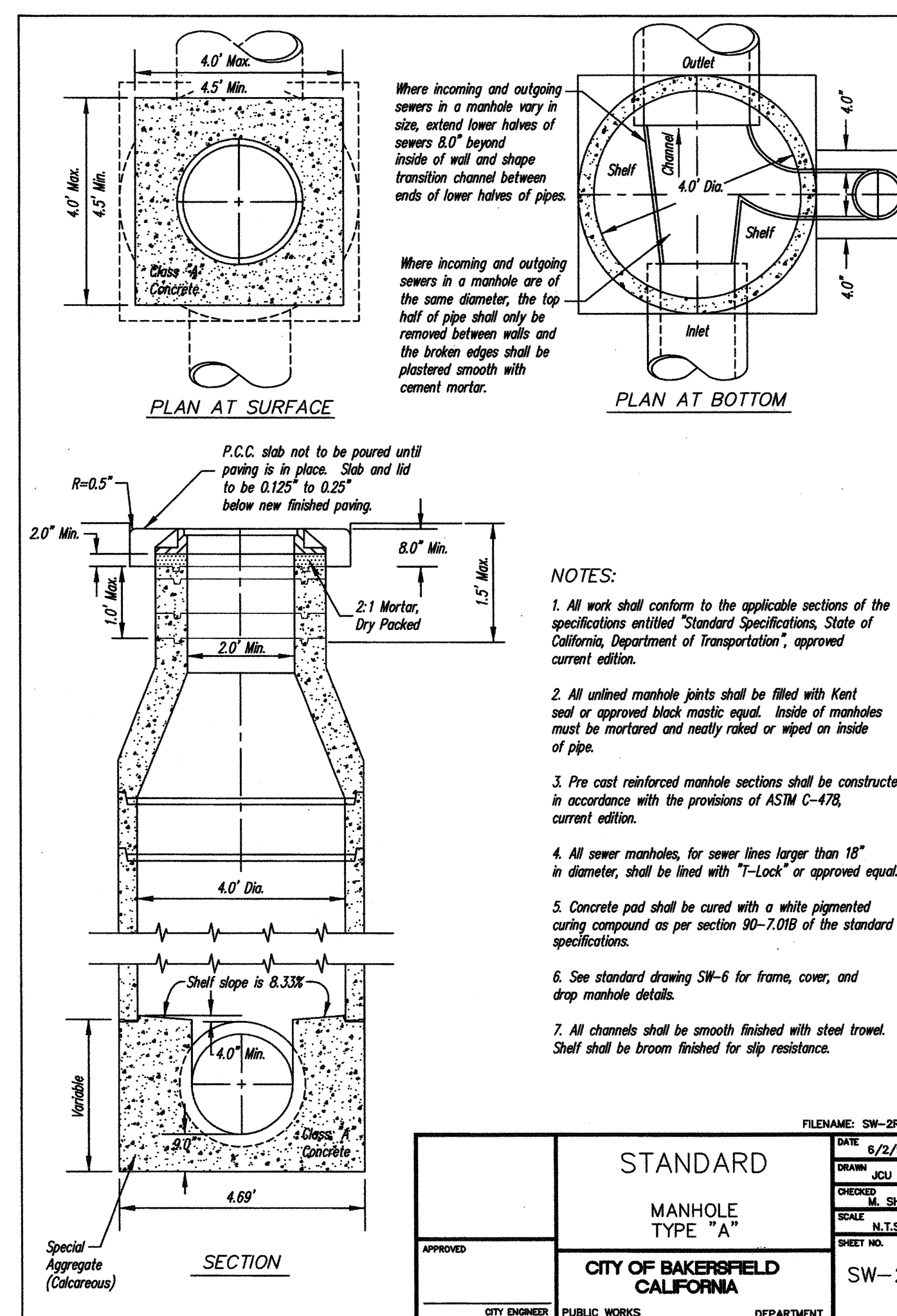
**5 LATERAL CONNECTION TO EXISTING MAIN**  
NTS



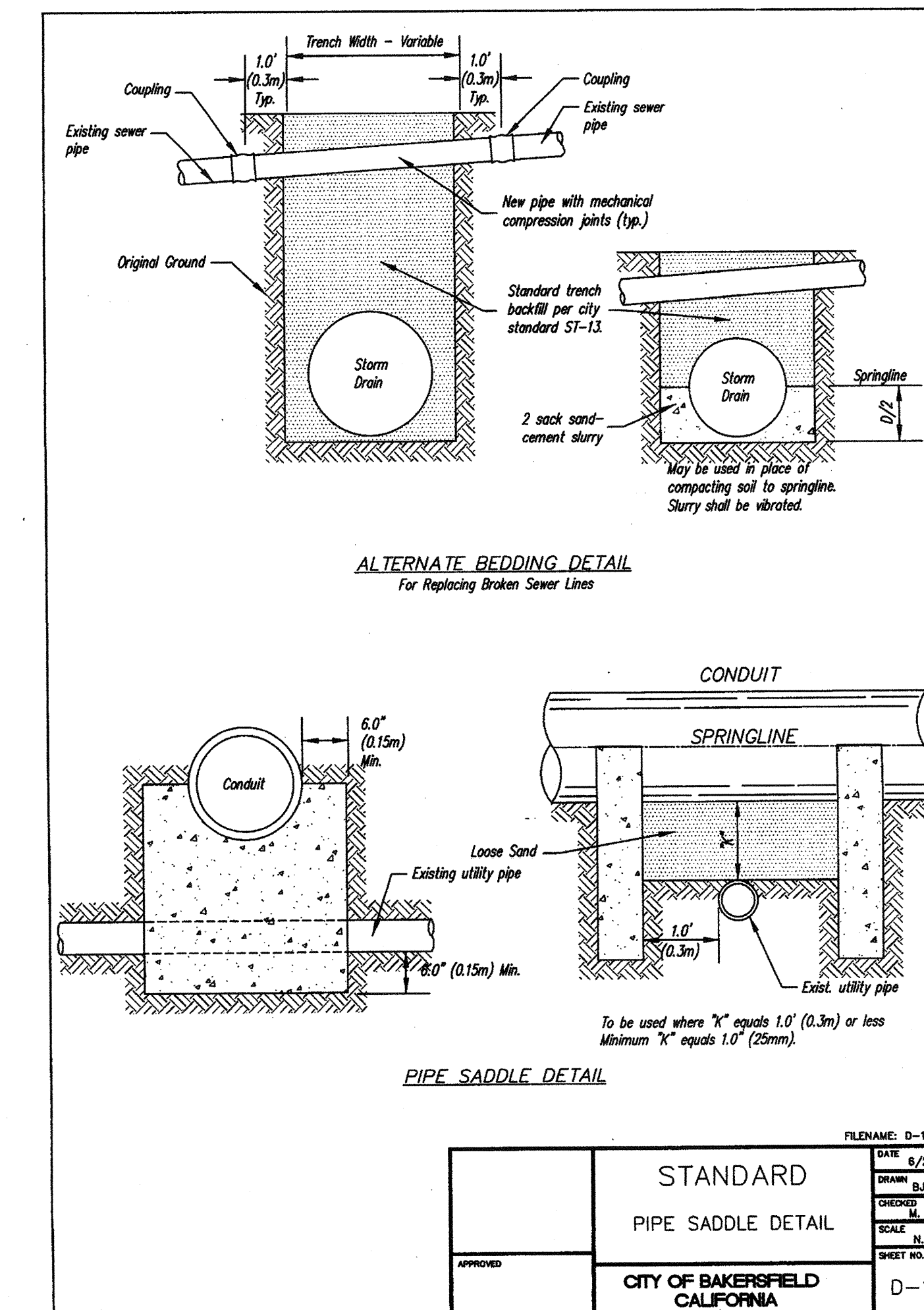
**6 IN-LINE CLEANOUT**  
NTS



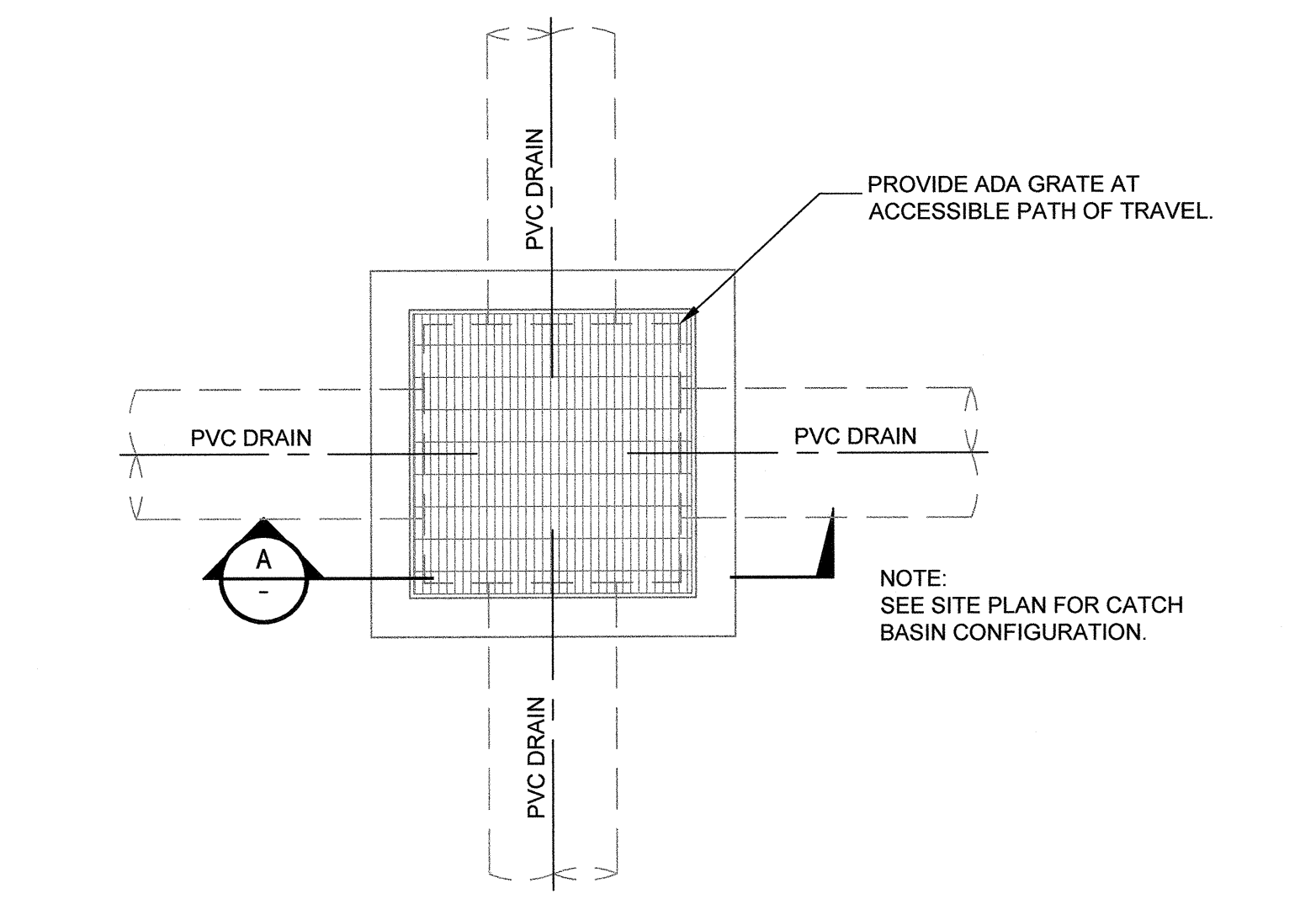
**7 WATER SERVICE AND HOSE BIBB**  
NTS



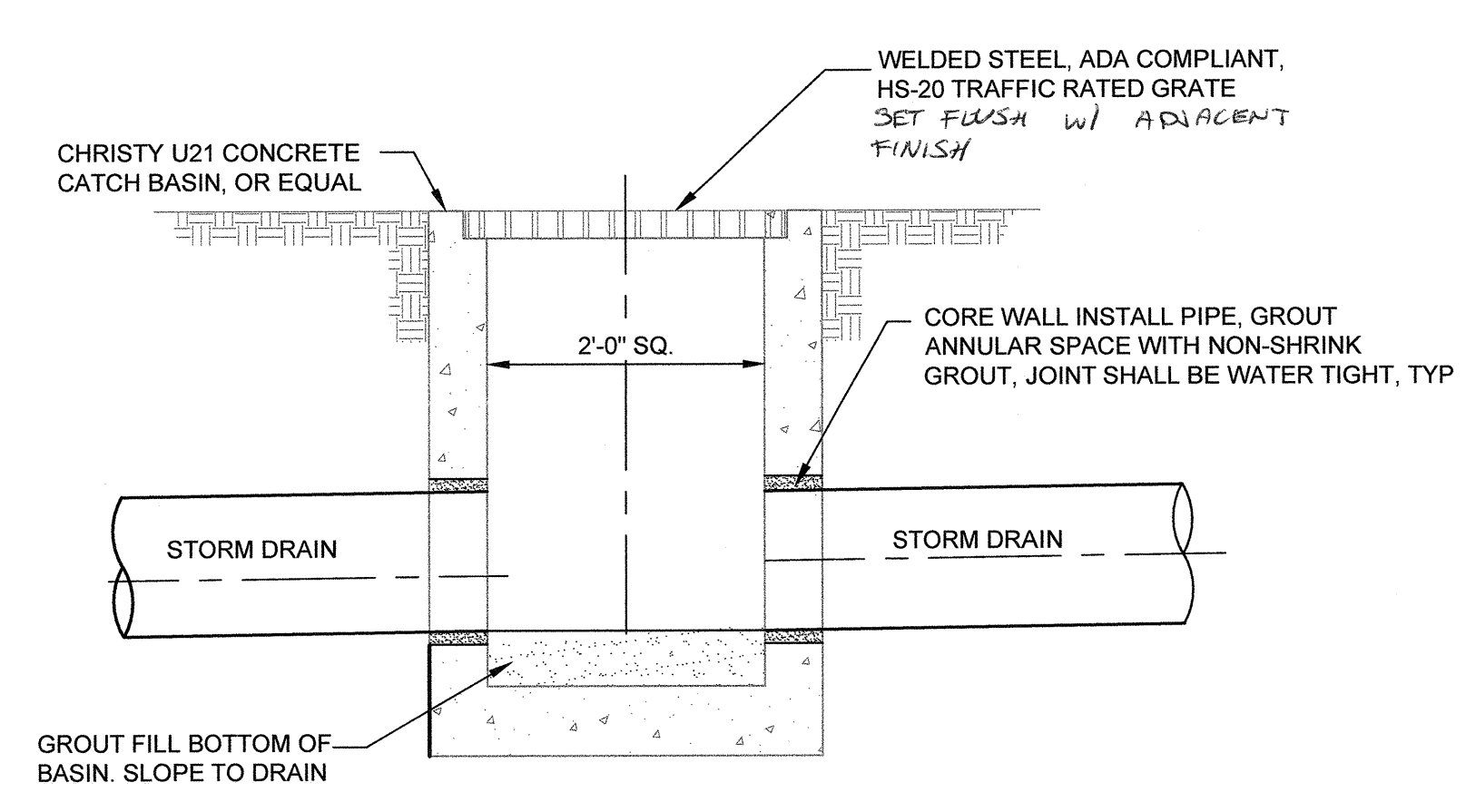
**8 STANDARD MANHOLE**  
NTS



**9 PIPE SADDLE**  
NTS



**10 CATCH BASIN PLAN**  
NTS



**11 CATCH BASIN SECTION**  
NTS

AGENCY INFORMATION:

AGENCY TRACKING NO. 63321-356  
FILE NO. 15-6

IDENTIFICATION STAMP  
DIV. OF THE STATE ARCHITECT  
OFFICE OF REGULATION SERVICES  
03-120240  
AC: N FL: S SR: 1  
DATE: JAN 02 2020

SEAL

COPYRIGHT:  
Any reproduction or distribution for any purpose other than authorized by AECOM is forbidden.

COPYRIGHT 2019 AECOM

REVISIONS

NO.	DATE SUBMITTED	DATE APPROVED	DESCRIPTION

CONSULTANT

PRIME CONSULTANT

**AECOM**

5001 E Commercer Drive, Suite 100  
Bakersfield, CA 93306  
661.283.2323 fax: 661.283.2360  
www.aecom.com

BAKERSFIELD CITY SCHOOL DISTRICT

**BESSIE OWENS E.S. KINDERGARTEN MODULAR BUILDINGS**

815 POTOMAC AVE, BAKERSFIELD, CA 93307

OPSC or OSHPD PROJ. NO.

PROJECT NO: 60594420  
DRAWN BY: NR  
CHK'D BY: ACR  
ISSUE DATE: 08/06/2019  
SHEET TITLE

**DETAILS**

SHEET NUMBER

**2C1204**

CONSTRUCTION DOCUMENTS