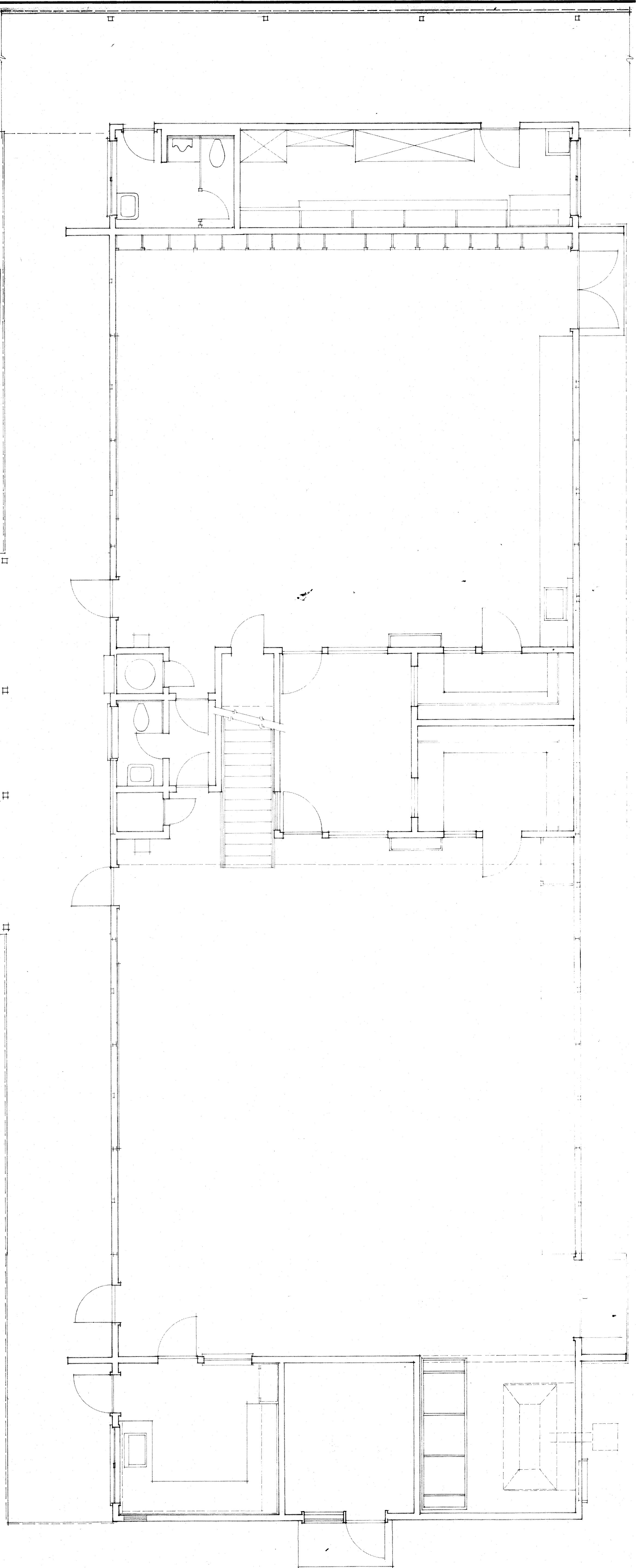
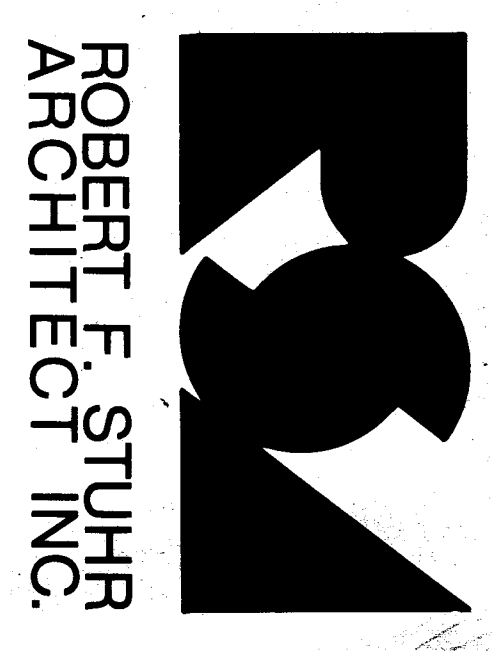
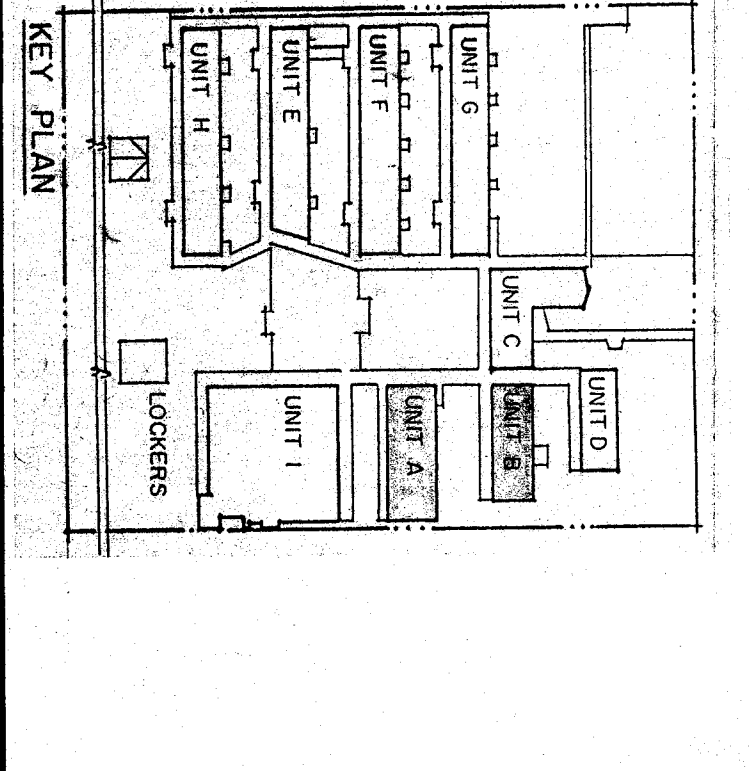


UNIT B LIGHTING PLAN
1/4" = 1'-0"

- UNIT A & B LIGHTING PLAN NOTES:**
1. REPLACE EXISTING LIGHTING FIXTURES WITH NEW TYPE AS INDICATED. EXISTING WIRING SHALL REMAIN UNLESS OTHERWISE INDICATED. IN PARALLEL CIRCUITS, ALL NEW WIRING SHALL BE IDENTIFIED BY NUMBERED CONDUITS WITH NEW AS INDICATED BY THE NUMBER OF WASH LINES. CONNECT NEW LIGHTS TO EXISTING OR NEW SWITCHES.
 2. RECONNECT EXISTING SWITCHES.
 3. REMOVE EXISTING WIRING IN EXISTING CONDUIT WITH NEW AS INDICATED. AS CONNECT TO NEW SWITCHES AND WIRING.
 4. REMOVE EXISTING SWITCH AND WIRING.
 5. REMOVE EXISTING 3-LAMP FIXTURES (FANDED-WIRE). TYPICAL.
 6. TYPICAL OF ALL 3-LAMP AND 4-LAMP FIXTURES: CONNECT ALL INNER 2-LAMP SWITCHES TO NEW 3-WAY SWITCH. CONNECT ALL OUTER SWITCHES ON THE OUTER RING WITH NEW 3-WAY SWITCH.
 7. REMOVE EXISTING SWITCH WITH TWO SINGLE POLE SWITCHES. PROVIDE NEW TWO GANG RING AND PLATE.
 - 8.



UNIT A LIGHTING PLAN
1/4" = 1'-0"

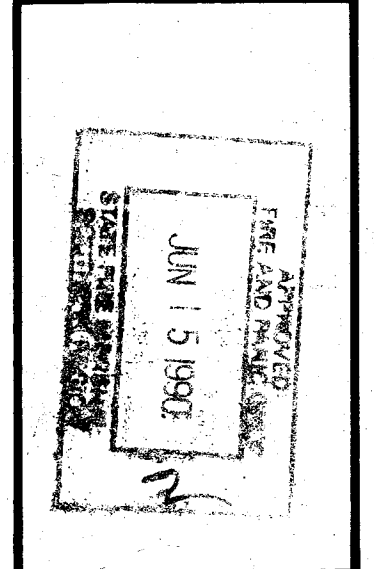


ROBERT F. STUHR ARCHITECT INC.
3121 CALIFORNIA AVE.
BAKERS FIELD CA.
93304 (805) 327-1632

EXP-
ROBERT F. STUHR AIA C-1610
WILLIAM J. MELBY AIA C-16835
DANNY E. ORDOZ AIA C-14728

TITLE 24 & 1988 U.B.C.

W/11/14



15371 B. Stuhr 15 98

Professional Engineer
Robert F. Stuhr
No. 15371, State of California
(Exp. 12/31/98)
(805) 752-7870

UNIT A & UNIT B LIGHTING PLAN
VISTA EAST CONTINUATION HIGH SCHOOL 30 YEAR MODERNIZATION
815 EUREKA STREET
KERN HIGH SCHOOL DISTRICT
KERN COUNTY, CALIFORNIA

CHECK AND VERIFY ALL DIMENSIONS BEFORE PROCEEDING WITH THE WORK. REPORT DISCREPANCIES TO THE ARCHITECT IMMEDIATELY BY TELEPHONE OR IN WRITING TO THE ARCHITECT'S OFFICE.

MARK	DATE	REVISIONS
△		
△		
△		
△		

JOB NO. 707
DRAWN: E
CHECKED: 2
DATE: 6/16/90
OF 9 SHEETS