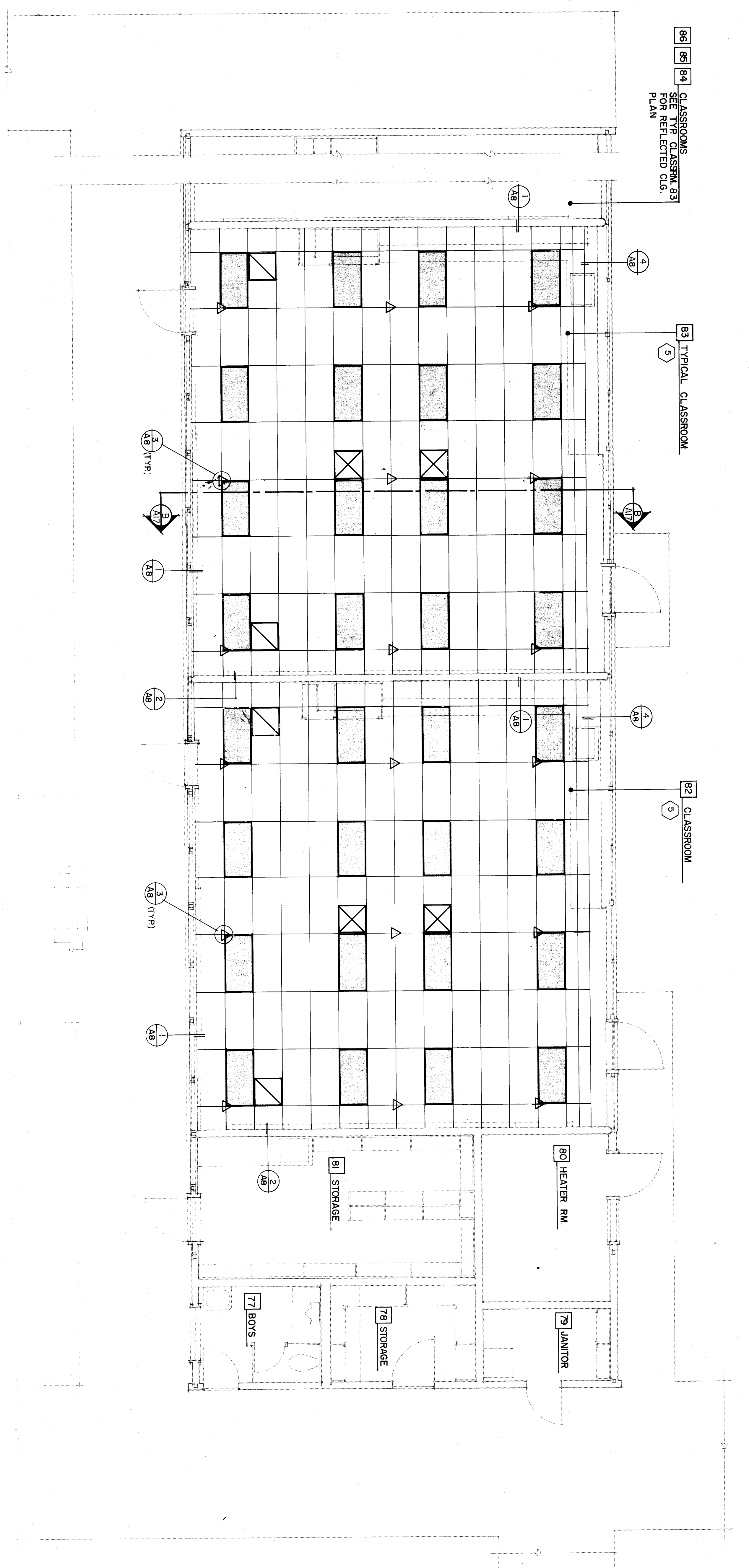


96 94 CLASSROOMS  
SEE TYP CLASSRM 83  
FOR REFLECTED CLG.  
PLAN

83 TYPICAL CLASSROOM  
5

82 CLASSROOM  
5



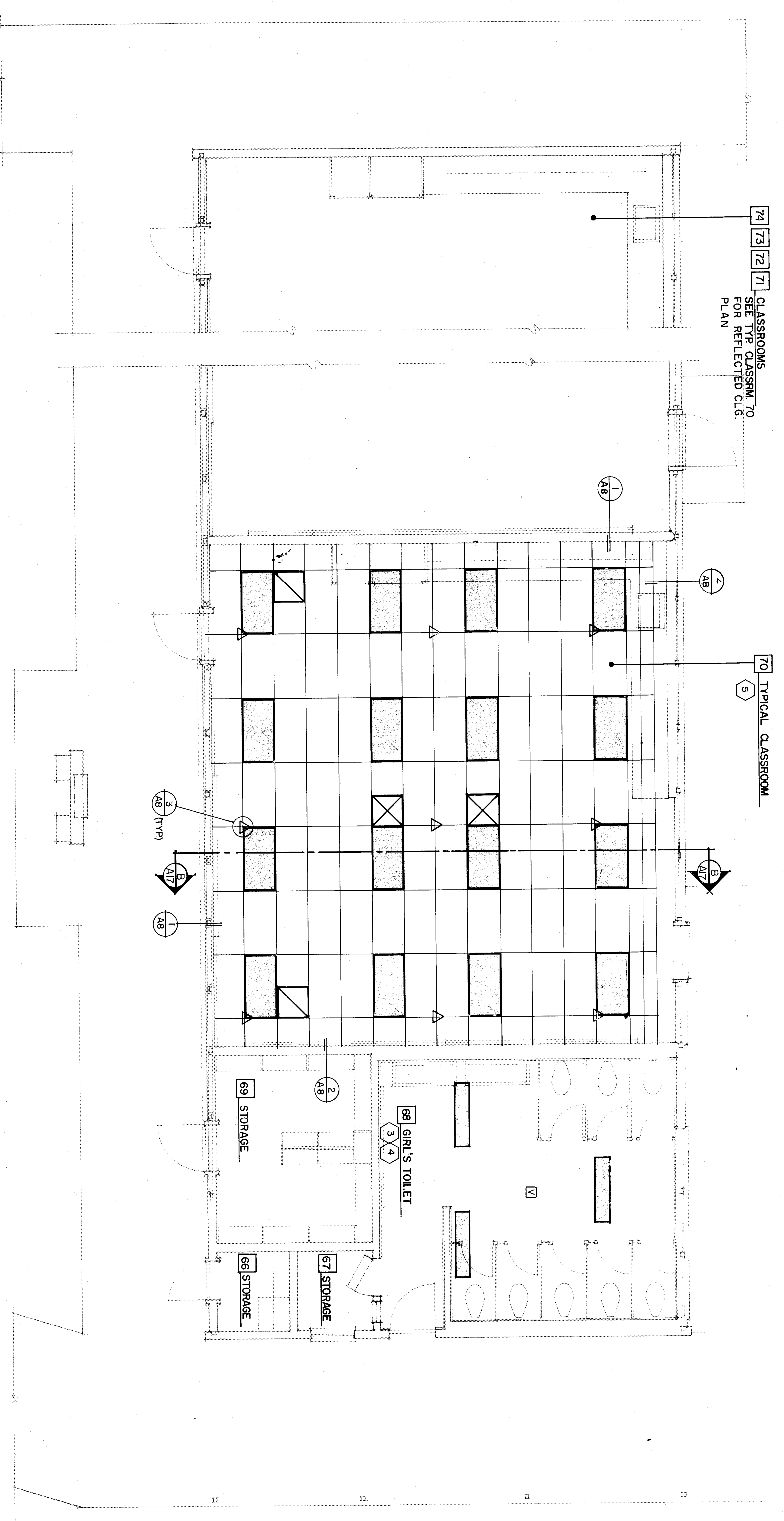
REFLECTED CEILING NOTES

1. (N) exhaust fan.
2. (N) surface mounted fluorescent fixture.
3. (N) as per electrical drawings.
4. (N) T-bar suspended ceiling with fluorescent insulation.
5. (N) T-bar suspended ceiling with fluorescent insulation.
6. (N) Acoustical ceiling surface fixture.

Unit G

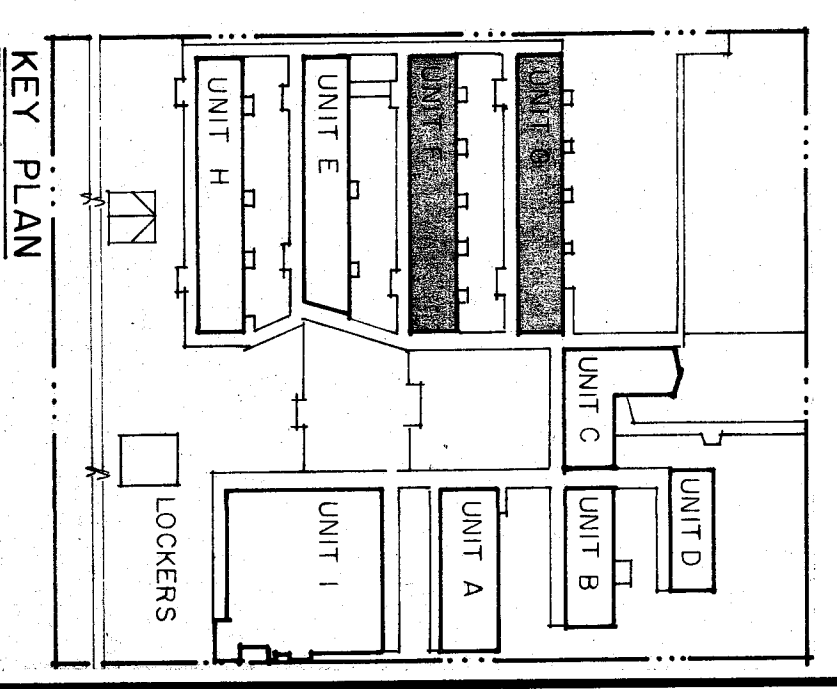
74 73 72 71 CLASSROOMS  
SEE TYP CLASSRM 70  
FOR REFLECTED CLG.  
PLAN

70 TYPICAL CLASSROOM  
5



LEGEND

- (N) 2x4 FLUORESCENT LT. FIXTURES (see elect.)
- (N) 2x4 ACOUSTIC TILE/T-BAR CEILING (see elect.)
- (N) SPLAY WIRES 4 DIRECTIONS (see detail 3/A8)
- (N) SUPPLY AIR REGISTER (see mech.)
- (N) RETURN AIR REGISTER (see mech.)
- (N) EXHAUST FAN (see mech.)
- (N) VISUAL FIRE ALARM (see elect.)
- (N) 1 x 4 FLUORESCENT SURFACE MT. FIXTURE (see elect.)



Unit F  
REFLECTED CEILING PLANS

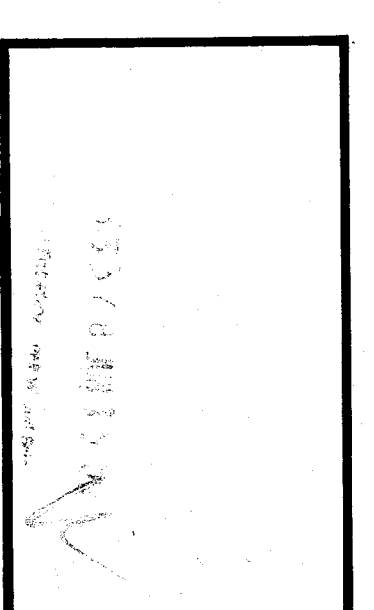


ROBERT F. STUHR  
ARCHITECT INC.  
3121 CALIFORNIA AVE  
BAKERSFIELD CA  
93304 (805) 327-1632

ENG'D BY  
ROBERT F. STUHR AIA C-1610  
WILLIAM J. MELBY AIA C-16335  
DANNY E. ORDIZ AIA C-14728

TITLE 24 & 1786 UFGC

DATE 6/17/14



REFLECTED CEILING PLANS- UNITS F & G,  
NOTES  
VISTA EAST CONTINUATION HIGH  
SCHOOL 30 YEAR MODERNIZATION  
815 EUREKA STREET  
KERN HIGH SCHOOL DISTRICT  
KERN COUNTY, CALIFORNIA

CHECK AND VERIFY ALL  
DIMENSIONS AND WORK PROGRAM  
WITH THE WORK REPORT  
DISCREPANCIES TO THE ARCHITECT  
ALL CONSTRUCTION SHALL  
CONFORM TO SPS.

MARK	DATE	REVISIONS
△		
△		
△		

JOB NO.  
707  
DRAWN:  
M.K.B.  
CHECKED:  
DATE:  
6-14-10  
OF 19 SHEETS.