



**ROBERT F. STUHR ARCHITECT INC.**  
 3121 CALIFORNIA AVE  
 BAKERSFIELD, CA  
 93304 (805) 327-1632

RF-1  
 ROBERT F. STUHR AIA C-1610  
 WILLIAM J. MELBY AIA C-16835  
 DANNY E. ORDEZ AIA C-14728

TITLE: 24 & 1788, UBC  
 6/7/74  
 6/7/74

REFLECTED CEILING PLANS - UNITS A & B, NOTES  
 VISTA EAST CONTINUATION HIGH SCHOOL 30 YEAR MODERNIZATION  
 815 EUREKA STREET  
 KERN HIGH SCHOOL DISTRICT  
 KERN COUNTY, CALIFORNIA

CHECK AND VERIFY ALL DIMENSIONS BEFORE PROCEEDING WITH THE WORK. REPORT ALL DISCREPANCIES TO THE ARCHITECT. ALL CONSTRUCTION SHALL CONFORM TO UBC.

MARK	DATE	REVISIONS
△		
△		
△		
△		

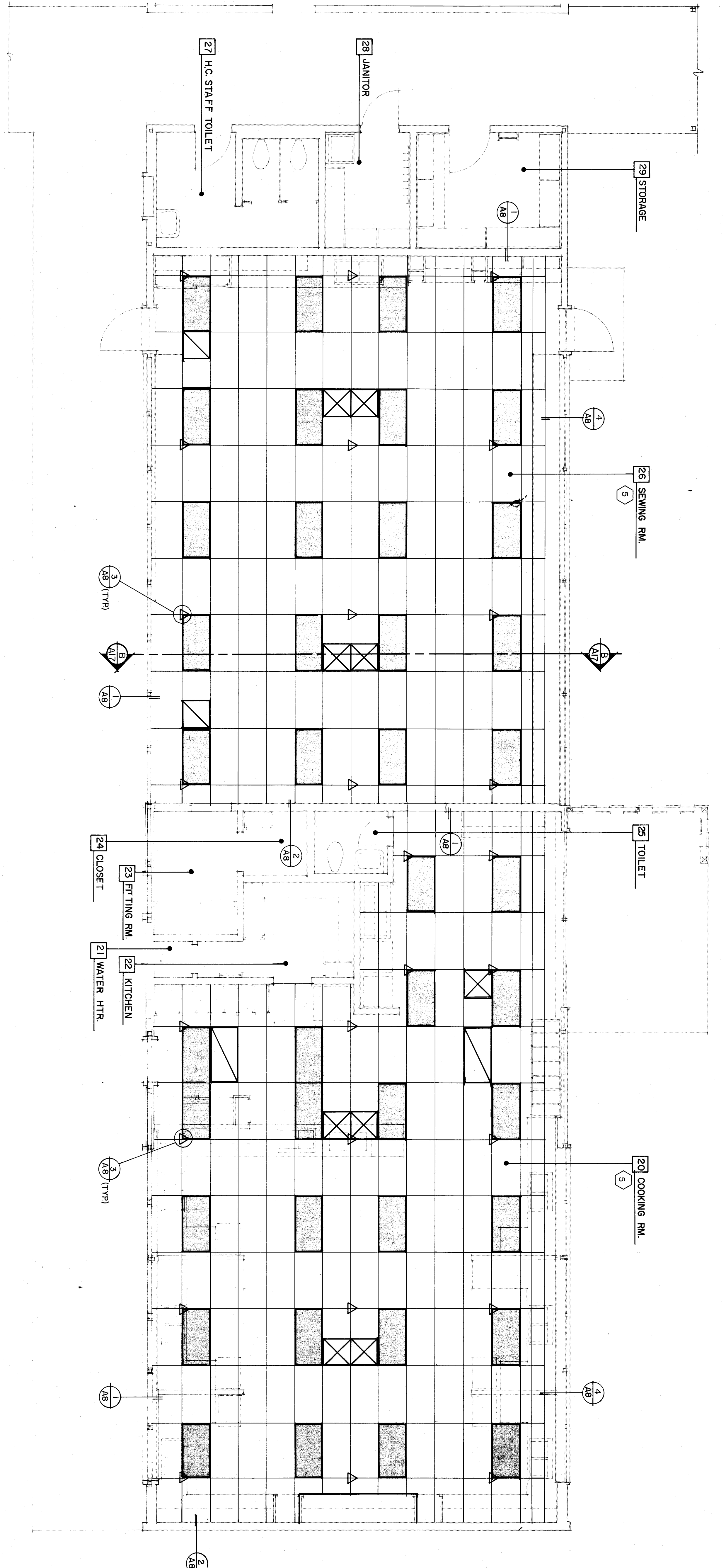
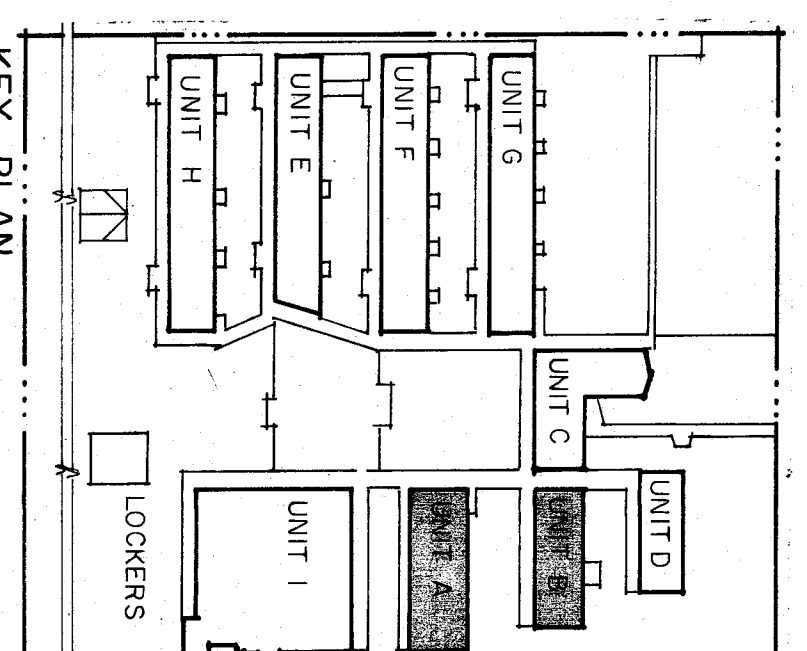
JOB NO: 707  
 DRAWN: M.K.B.  
 CHECKED: [Signature]  
 DATE: 6-14-70  
 OF 19 SHEETS

**REFLECTED CEILING NOTES**

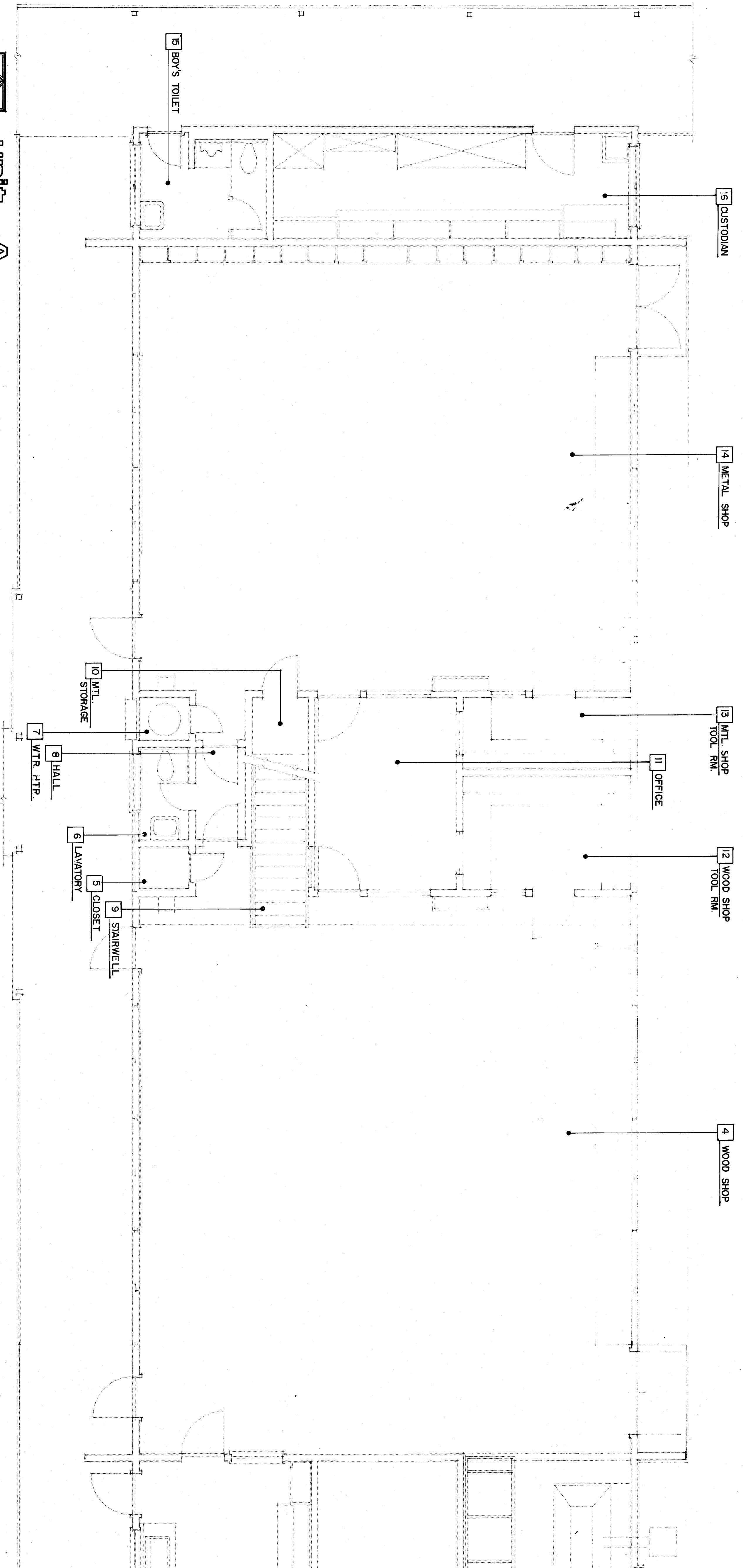
- (E) Exhaust Fan.
- Light fixture mounted.
- Replace (E) Lights with (N) as per electrical.
- Recessed lighting as required.
- (N) T-bar suspended insulation, ceiling lights and R-19 fluorescent insulation.
- (N) Recessed ceiling surface fixtures.

**LEGEND**

- (N) 2' x 4' FLUORESCENT LT. FIXTURES (see elect.)
- (N) 2' x 4' ACOUSTIC TILE/T-BAR CEILING (see elect.)
- (N) SPLY WIRS & DIRECTIONS (see detail 3/A/8)
- (N) SUPPLY AIR REGISTER (see mech.)
- (N) RETURN AIR REGISTER (see mech.)
- (N) EXHAUST FAN (see mech.)
- (N) VISUAL FIRE ALARM (see elect.)
- (N) 1' x 4' FLUORESCENT SURFACE MT. FIXTURE (see elect.)



**Unit B**



**Unit A**

**REFLECTED CEILING PLANS**  
 PAINTING EXTERIORS ONLY - NO INTERIOR WORK

9/14/00