

INTERIOR ELEVATIONS - UNIT C, NOTES

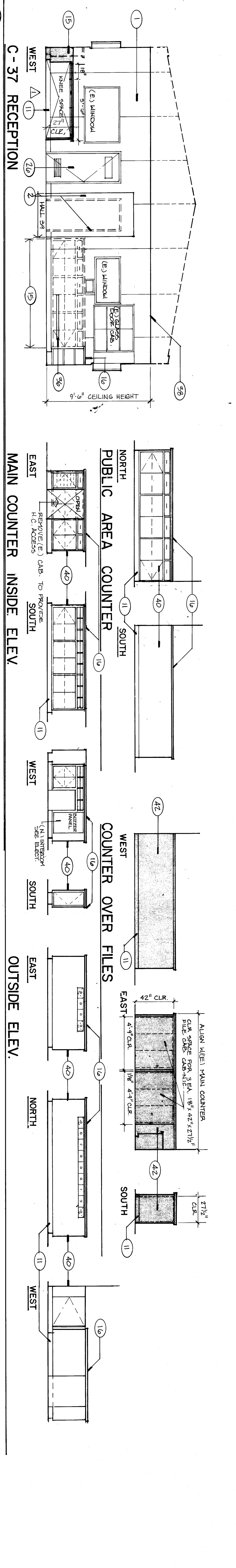
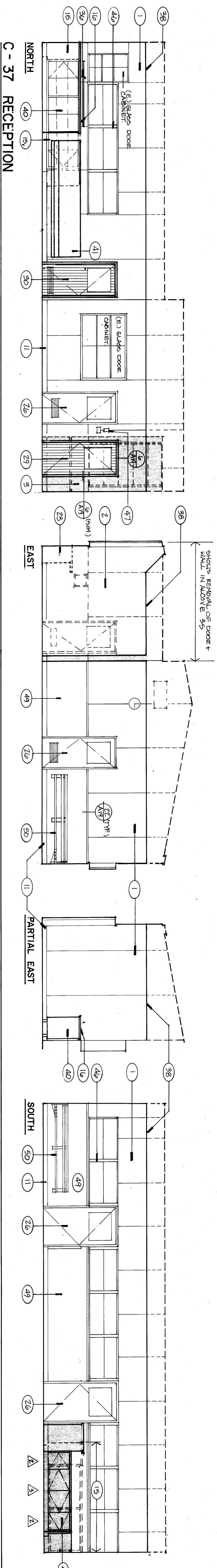
VISTA EAST CONTINUATION HIGH SCHOOL 30 YEAR MODERNIZATION

815 EUREKA STREET
 KERN HIGH SCHOOL DISTRICT
 KERN COUNTY, CALIFORNIA

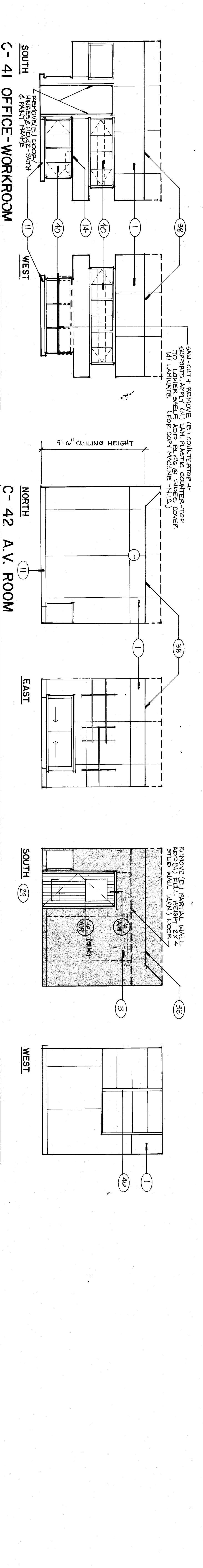
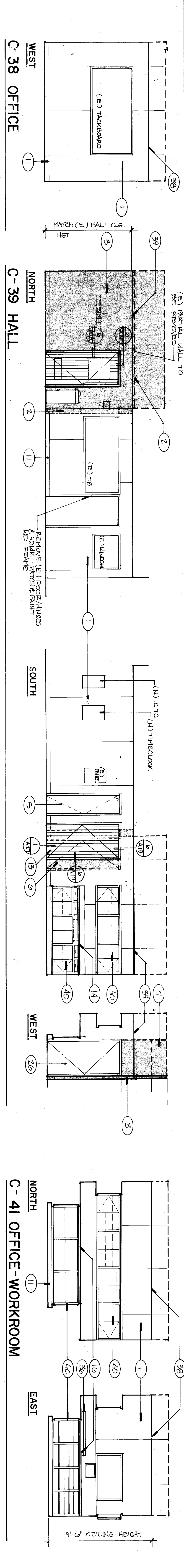
CHECK AND VERIFY ALL DIMENSIONS BEFORE PROCEEDING WITH THE WORK. REPORT DISCREPANCIES TO THE ARCHITECT IMMEDIATELY. ALL NOTATION SHALL CONFORM TO U.B.C.

MARK	DATE	REVISIONS
△		
△		
△		

JOB NO.	707
DRAWN:	M.K.B.
CHECKED:	
DATE:	6-14-80



- INTERIOR ELEVATIONS NOTES**
1. Patch walls as required.
 2. Remove dashed (E) wall.
 3. (N) 2x stud wall with finish to match (E) adjacent wall - patch (E) tile wainscot.
 4. (E) door finish - patch.
 5. (E) door patch - paint.
 6. (E) window patch - paint.
 7. (E) window patch - paint.
 8. (E) ceramic tile wainscot as required.
 9. REMOVE VENTILATION WALL FULL W/6" AT NAIL W/6" AT R.C. PATCH MATCH (E) ADJACENT WALL - PAINT.
 10. Remove (E) door patch - paint.
 11. (N) R.T.S.B.
 12. (N) RM door/frame and H.C.
 13. (N) H.C. ACCESSIBLE DOOR.
 14. (E) sink and counter top with (N) sink and laminated plastic.
 15. Remove (E) cabinet and plumbing if any, patch walls as required.
 16. (E) counter tops - laminate plastic.
 17. (E) toilet counter tops.
 18. (N) toilet paper dispenser.
 19. (N) proper floor dispenser.
 20. (N) toilet.
 21. (E) partitions with (N) patch walls as required.
 22. (N) cabinet as per schedule.
 23. Remove (E) shelving - patch as required - paint.
 24. (N) shelves at wall as indicated.
 25. (N) H.C. Grab bars.
 26. (E) door hardware.
 27. (E) door hardware.
 28. (E) door/frame and hardware (E) door with (N) H.C. door/frame and H.C. hardware.
 29. (N) solid wood door.
 30. Reverse door swing - (N) H.C. door/frame and H.C. hardware.
 31. (N) bifield doors (E) opening.
 32. Remove (E) dashed opening.
 33. (N) H.C. accessible cabinet as indicated.
 34. (N) H.C. mounted lav.
 35. (N) toilet.
 36. (N) wall strip elect. outlets as indicated.
 37. Patch ceiling.
 38. (N) T-bar suspended ceiling with fluorescent lighting - R-19 insulation.
 39. (N) ceiling gypsum w/ acoustical tile surface.
 40. (E) wall patch as required.
 41. (E) exterior surfaces of (E) cabinets.
 42. (N) CAB /COUNTER W/ LAMINATED SURFACES - PAINT EXTERIOR SURFACES.
 43. (N) 2x plumbing wall.
 44. (N) 2x plumbing wall.
 45. (N) H.C. accessible cabinet as indicated.
 46. (N) H.C. accessible cabinet as indicated.
 47. (N) H.C. accessible cabinet as indicated.
 48. (N) H.C. accessible cabinet as indicated.
 49. REMOVE VINYL WALL COVERING.
 50. REMOVE (E) BENCH FOR LINOWALL - PATCH WITH (E) BENCH SEAT W/ (N) EXTENDED BENCH (E) BENCH.



UNIT C INTERIOR ELEVATIONS

1/7/84