

GENERAL NOTES

SHOARD POSITION INDICATES 3" HIGH CURB.

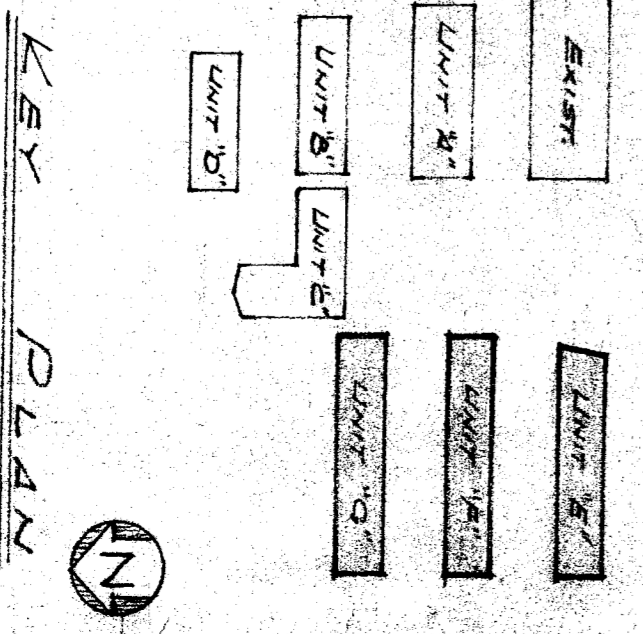
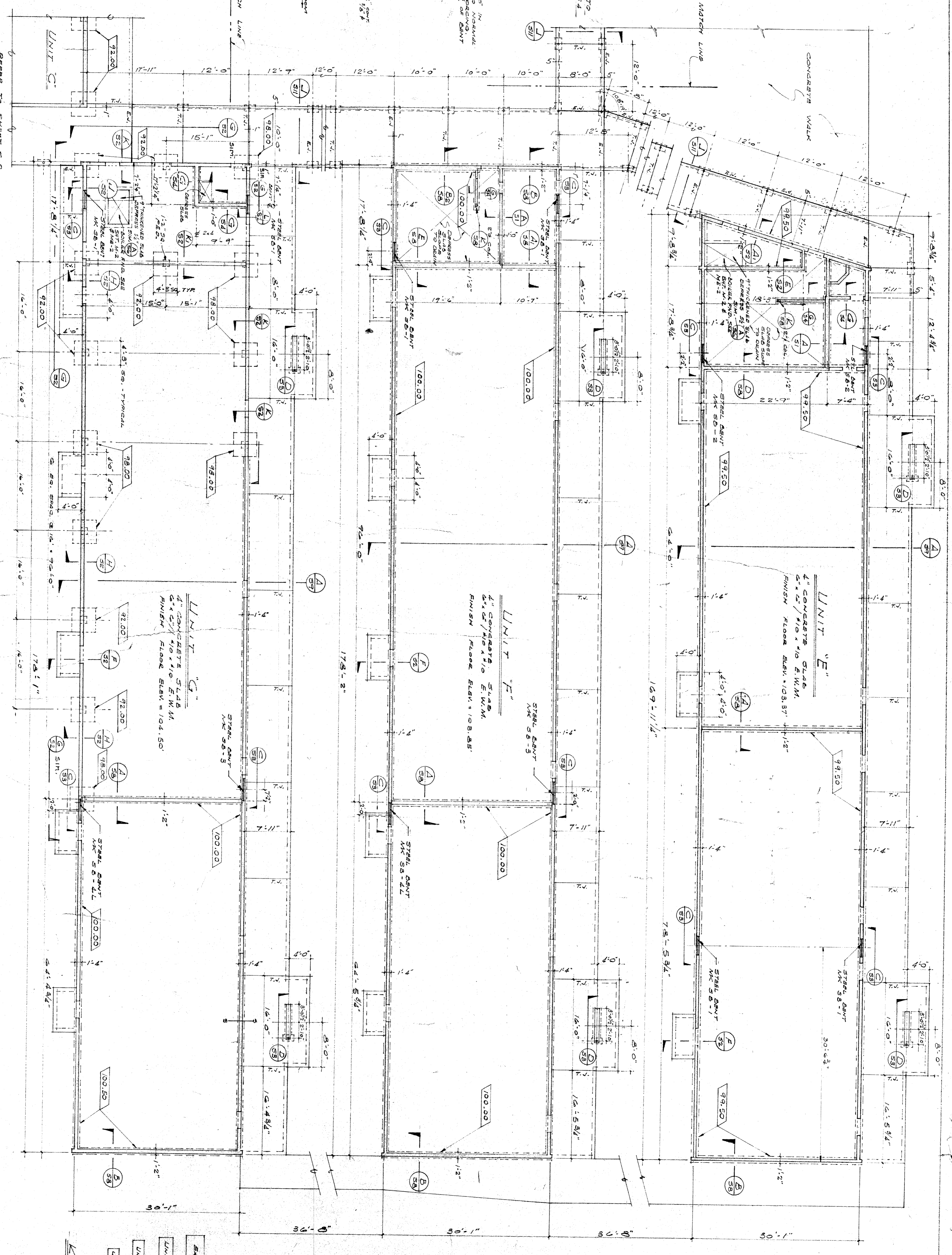
DIMENSIONS AT ENTIRE WALLS ARE TO OUTSIDE FACE UNLESS OTHERWISE NOTED.

ALL DIMENSIONS ARE TO FACE UNLESS OTHERWISE NOTED.

ALL FINISHES ARE TO FACE UNLESS OTHERWISE NOTED.

ALL FINISHES ARE TO FACE UNLESS OTHERWISE NOTED.

ALL FINISHES ARE TO FACE UNLESS OTHERWISE NOTED.



WILLIAM T. WHEELER STRUCTURAL ENGINEER LOS ANGELES, CALIFORNIA	STATE OF CALIFORNIA DEPT. OF PUBLIC WORKS DIVISION OF ARCHITECTURE APPROVED: 11/9/54	KERN CO. SUPERINTENDENT OF SCHOOLS APPROVED: 11/20/54	BAKERSFIELD CITY SCHOOL DISTRICT APPROVED: 11/20/54	REVISIONS	DATE: 9-30-53 DRAWN: JAD CHECKED: RUY	ROBERT N. EDDY ARCHITECT A.I.A. 2901 H ST. BAKERSFIELD, CALIFORNIA PH. 59048	FOUNDATION PLAN AND DETAILS - UNITS E-F & G LINCOLN JUNIOR HIGH SCHOOL BAKERSFIELD CITY SCHOOL DISTRICT KERN COUNTY, CALIFORNIA
--	---	--	--	-----------	---	---	--