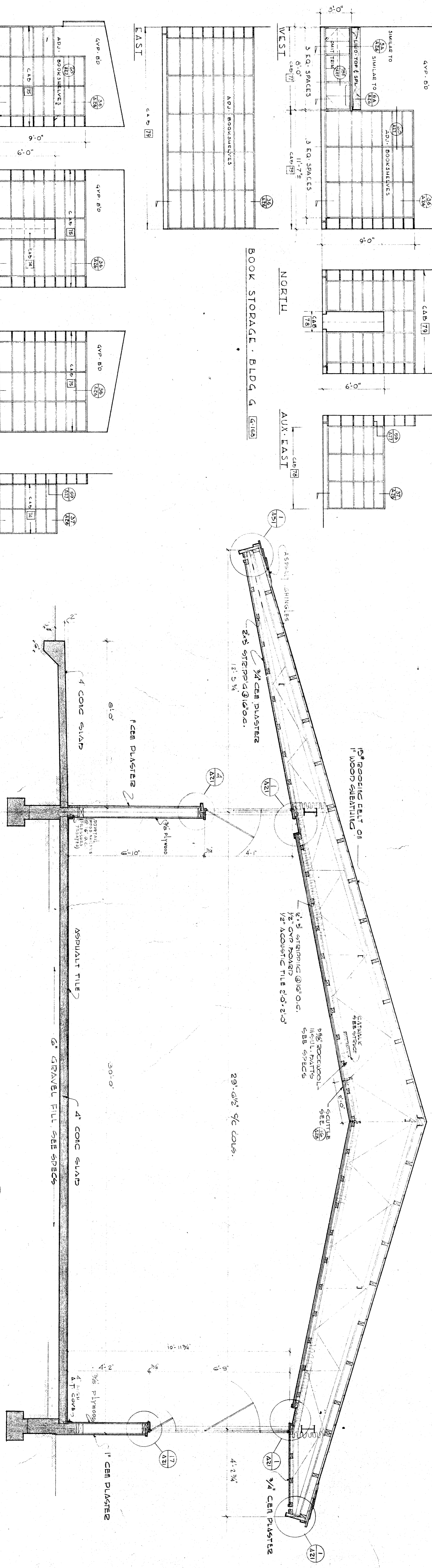
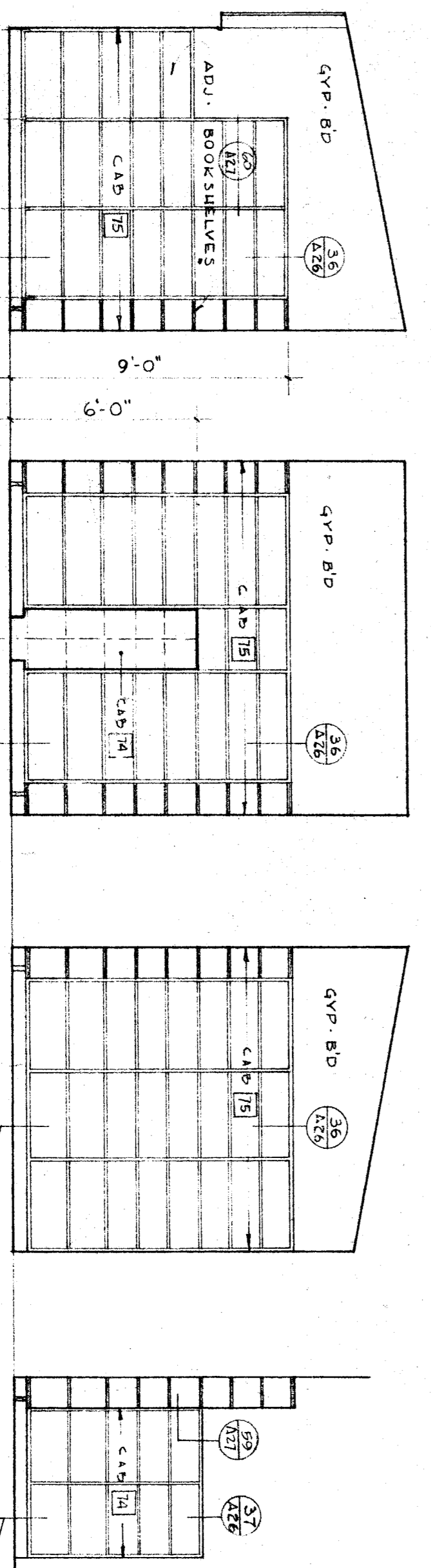


TYPICAL CLASSROOM - BLDG. F - 1/4" = 1'-0"



BOOK STORAGE - BLDG. F - 1/8" = 1'-0"



STATE OF CALIFORNIA DEPT. OF PUBLIC WORKS DIVISION OF ARCHITECTURE APPROVED: <i>[Signature]</i> DATE: 10-30-52	KERN CO. SUPERINTENDENT OF SCHOOLS APPROVED: <i>[Signature]</i> DATE: 10-20-52	BAKERSFIELD CITY SCHOOL DISTRICT BOARD OF EDUCATION APPROVED: <i>[Signature]</i> DATE: 10-20-52	REVISIONS
ARCHITECT: ROBERT N. EDDY	CHECKED: R.B.	DATE: 9-20-52	DRAWN: C.L.D.
2901 H. ST. BAKERSFIELD CALIFORNIA	PH. 59048	PROJECT: LINCOLN JUNIOR HIGH SCHOOL	INTERIOR ELEVATIONS, ARCHITECTURAL SECTIONS