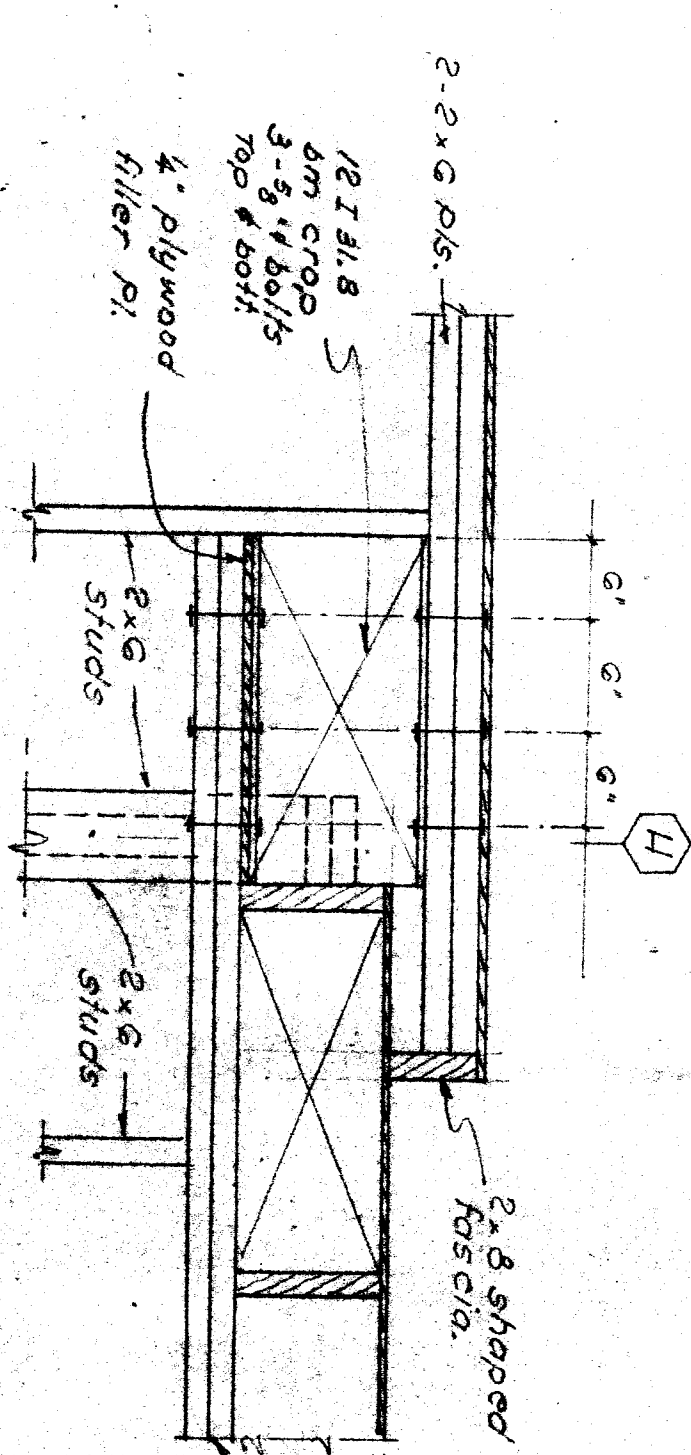
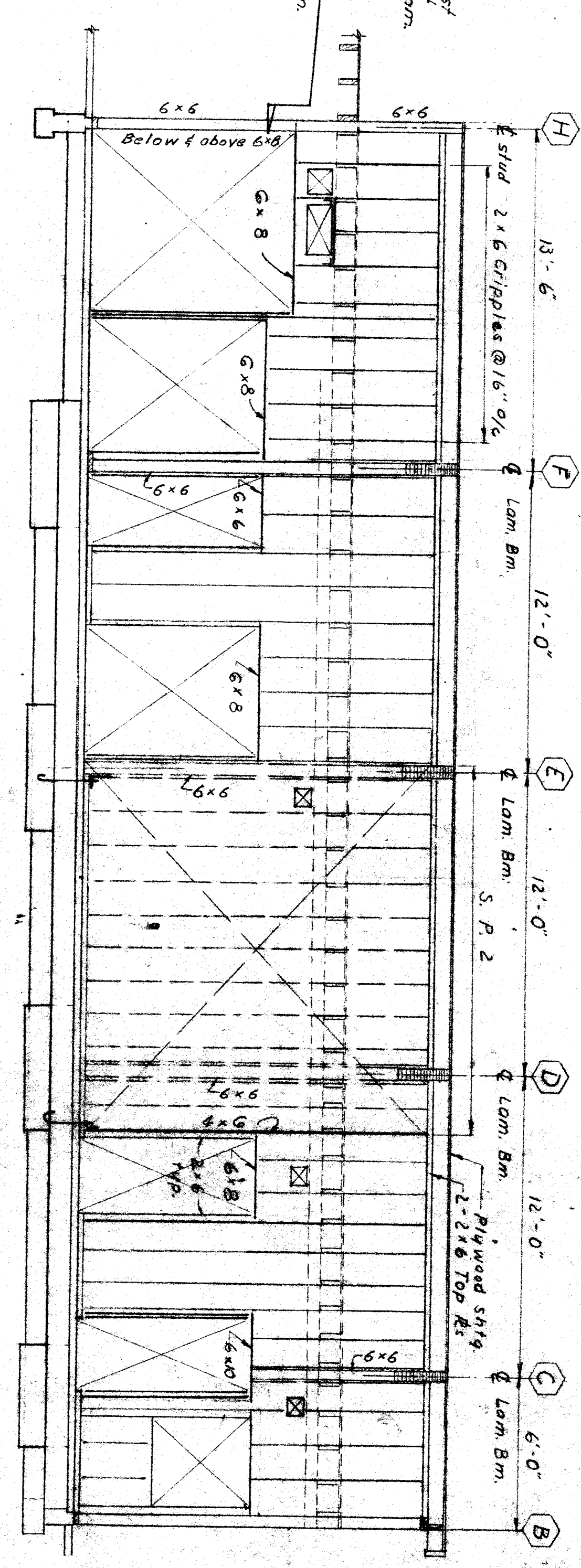


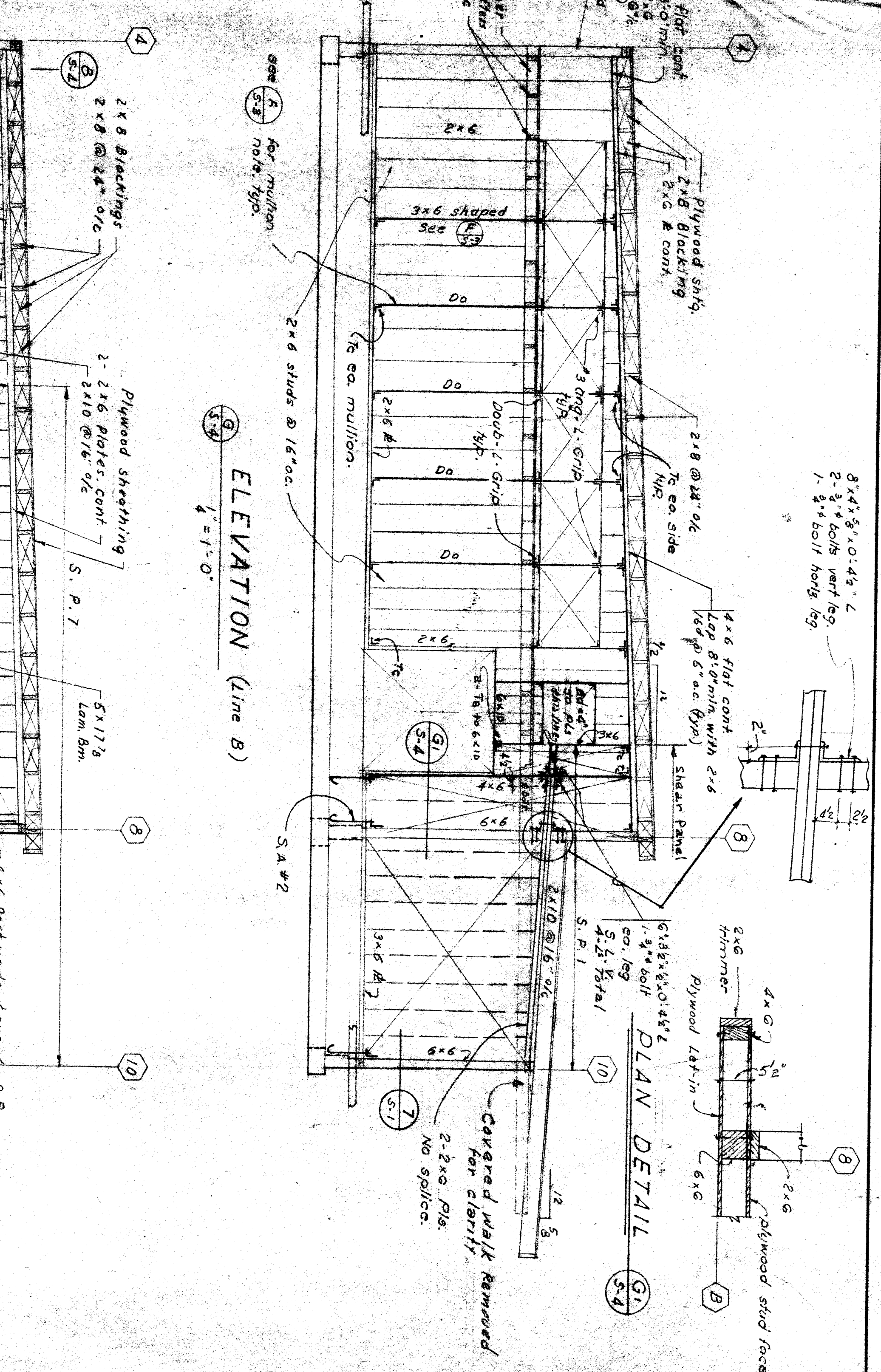
PART ELEVATION
1/2" = 1'-0"



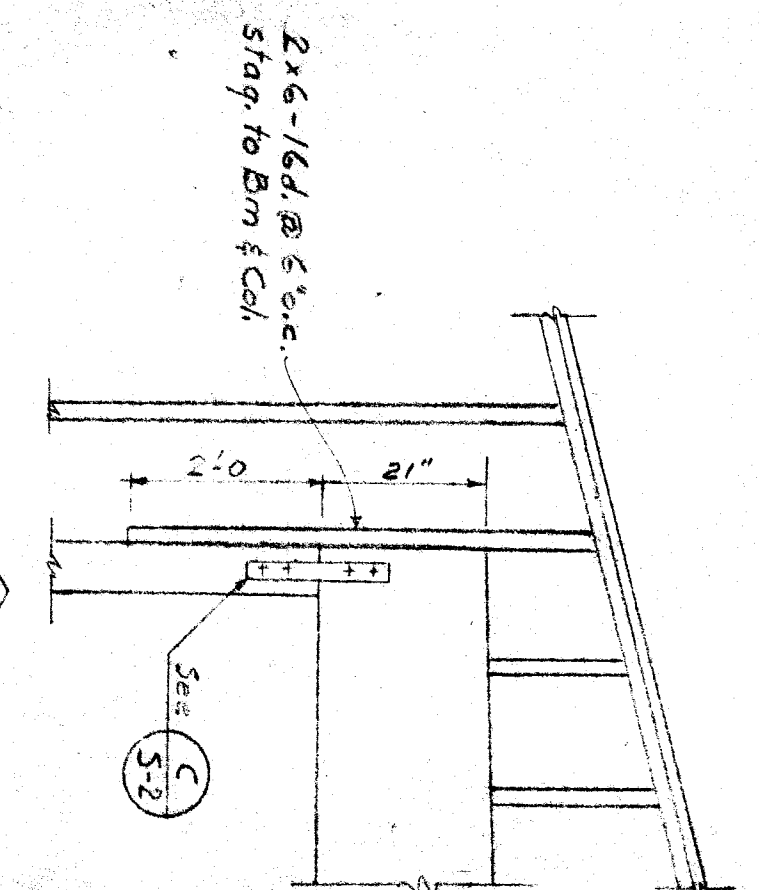
PART ELEV. DETAIL
1/2" = 1'-0"



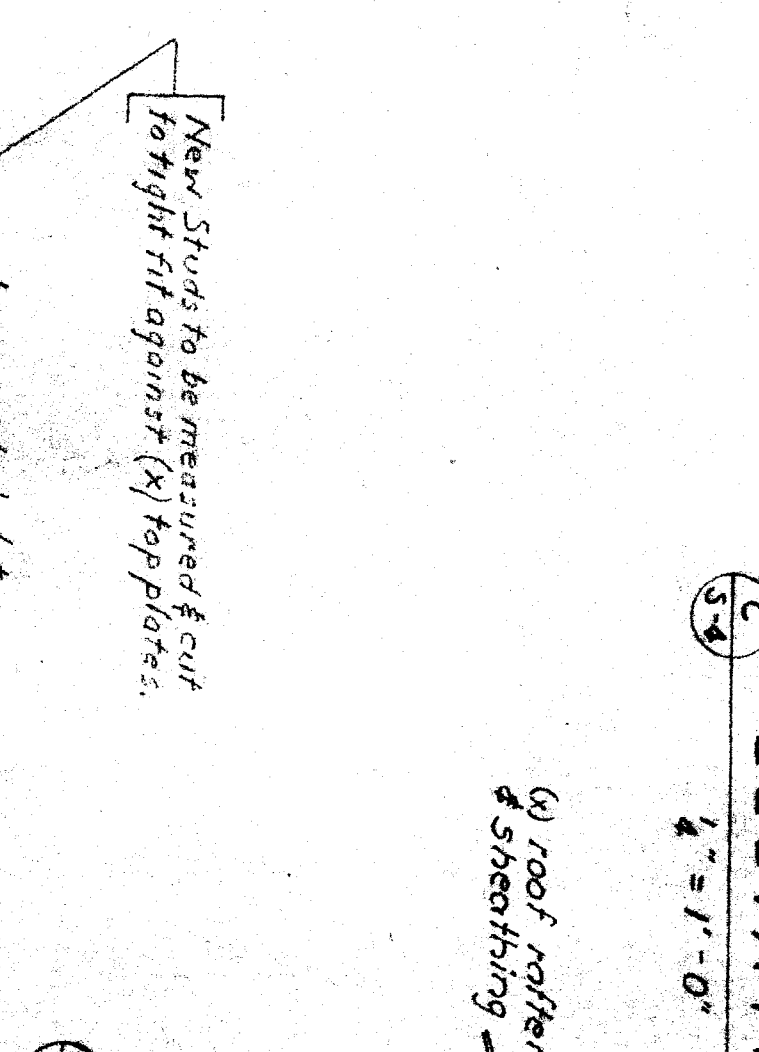
ELEVATION (line B)
1/2" = 1'-0"



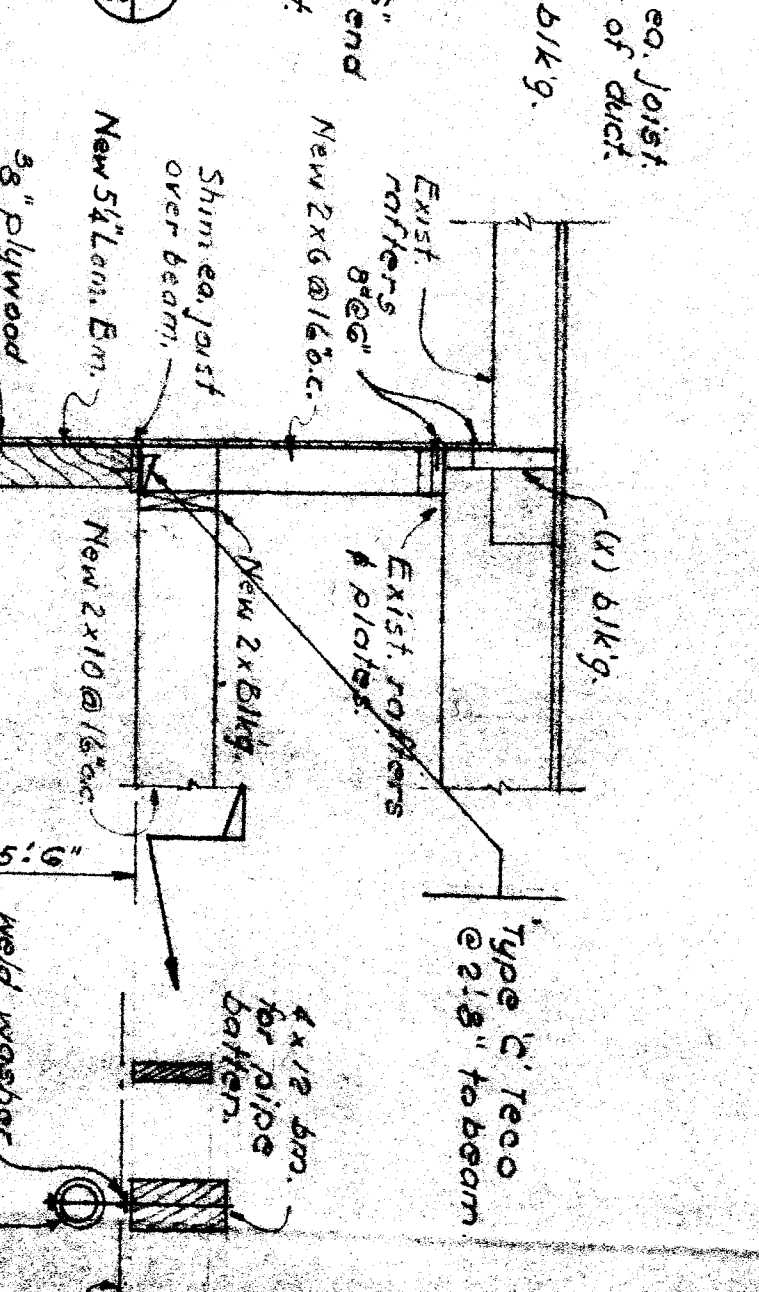
ELEVATION (line B)
1/2" = 1'-0"



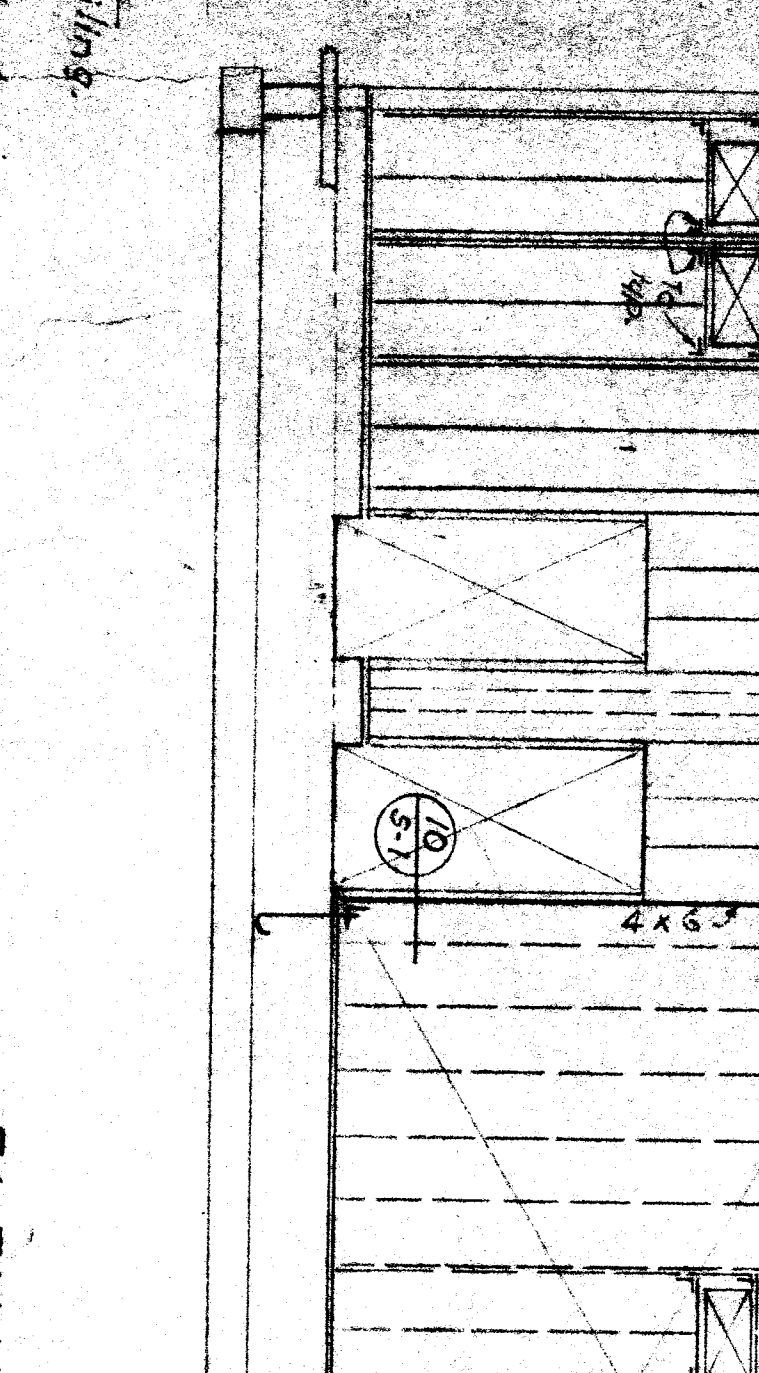
DETAIL



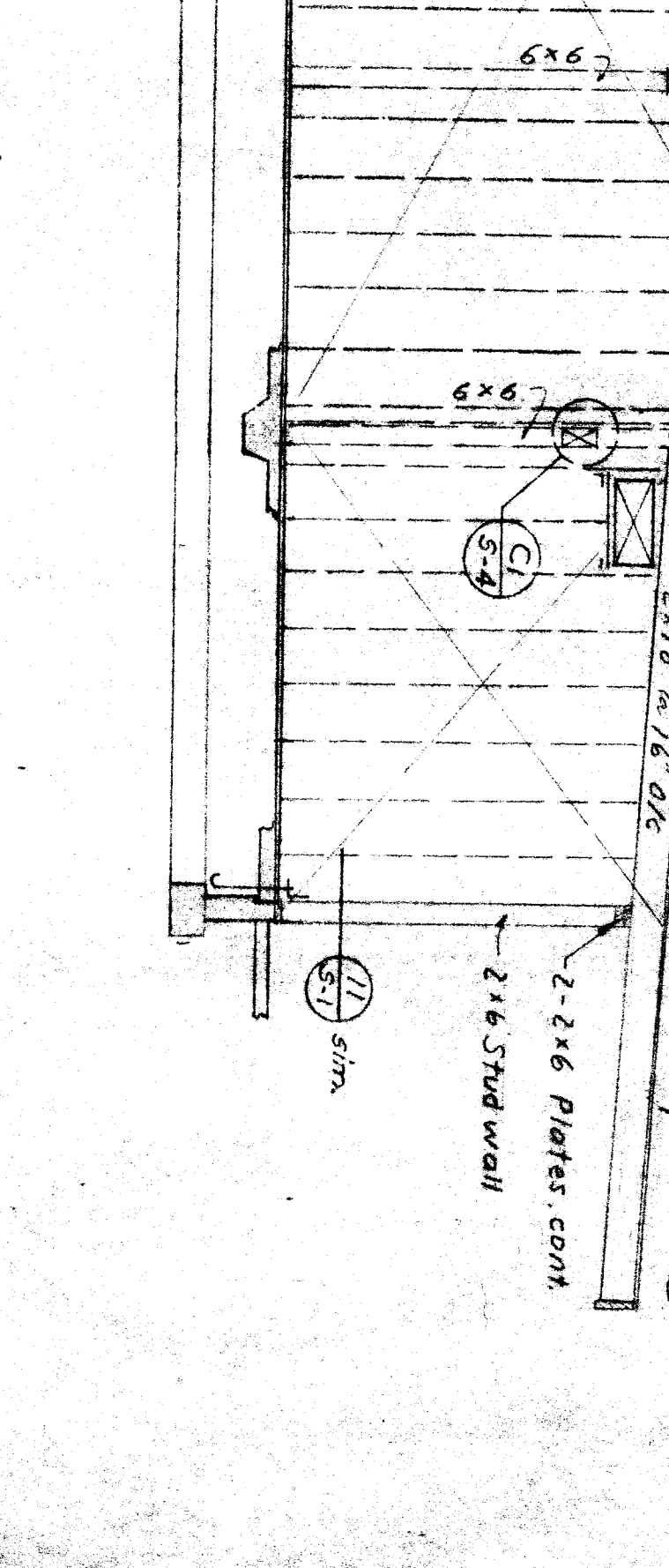
PLENUM DETAIL



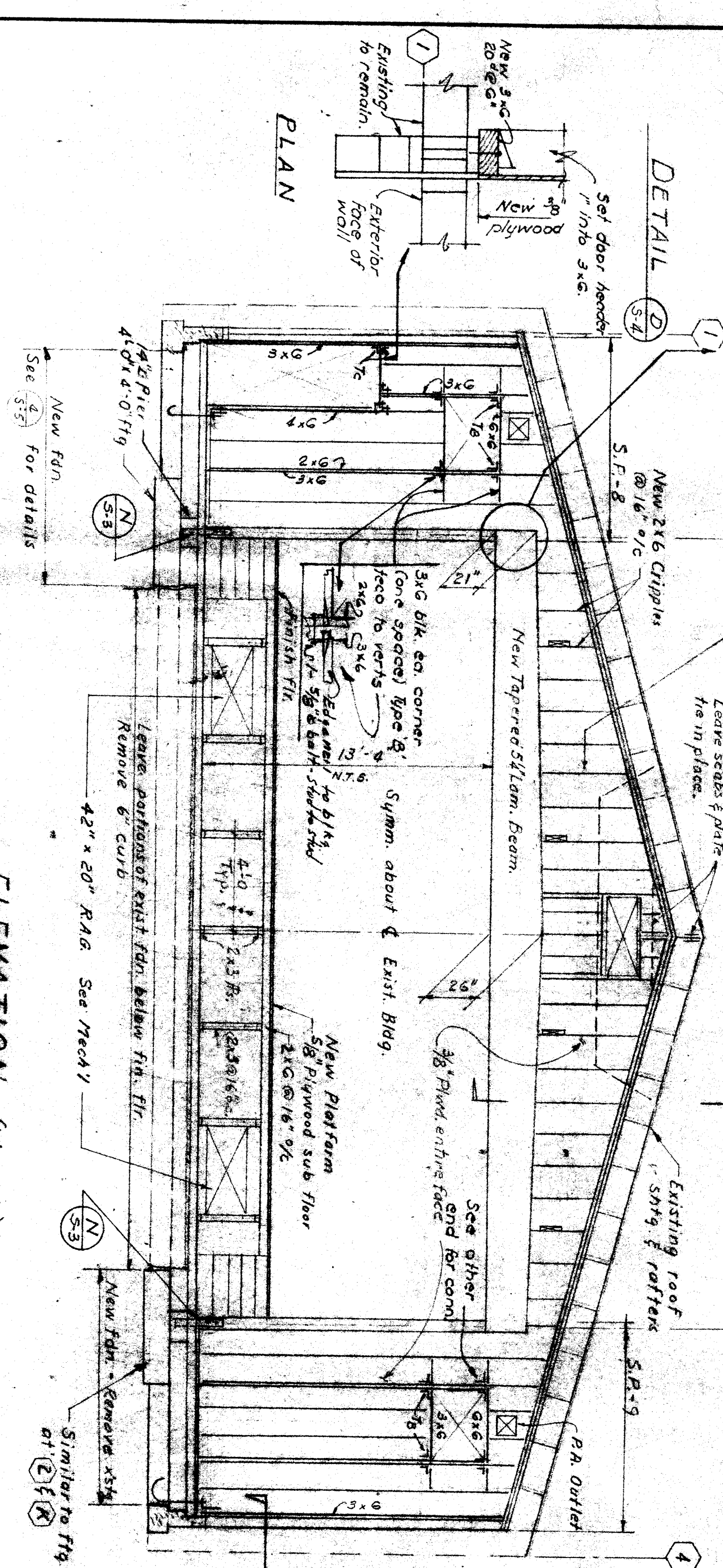
SECTION



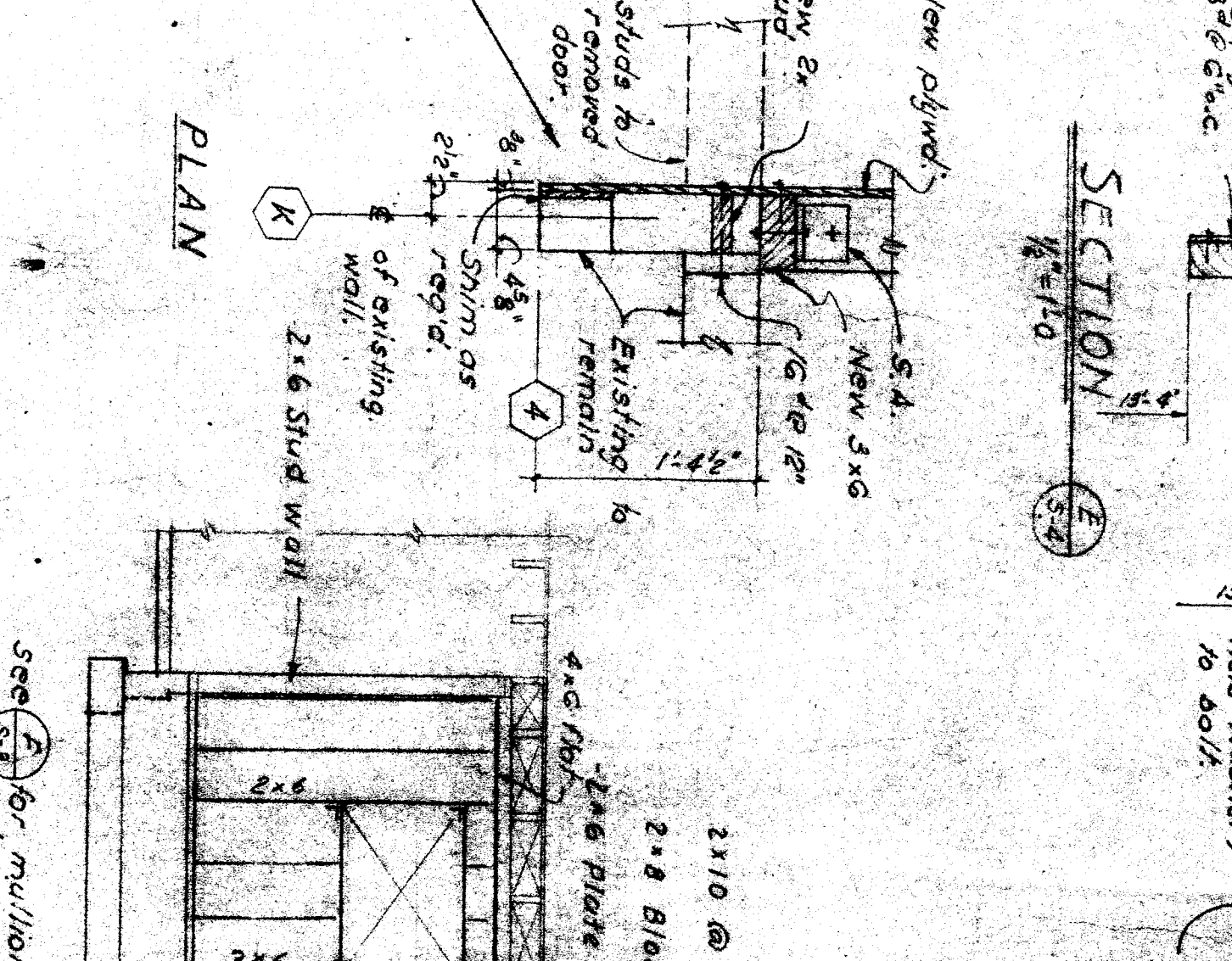
ELEVATION (line H)
1/2" = 1'-0"



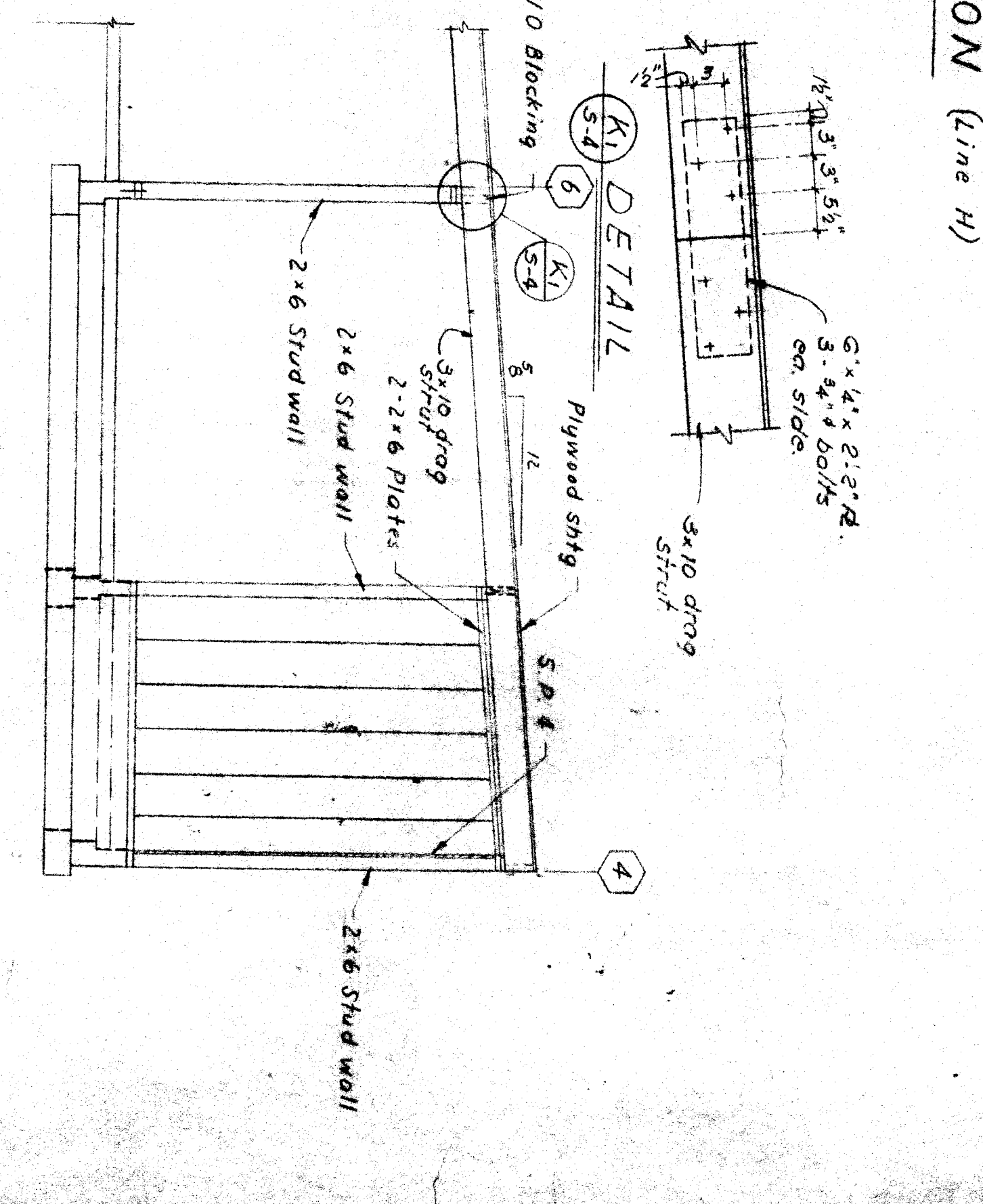
DETAIL



ELEVATION (line K)
1/2" = 1'-0"



ELEVATION
1/2" = 1'-0"



ELEVATION
1/2" = 1'-0"

BAKERSFIELD CITY SCHOOL DISTRICT APPROVED BY:	DATE OF PREPARATION: PART OF ARCHITECTURE: 	THE CONTRACTOR SHALL VERIFY ALL DIMENSIONS AND SHALL REPORT IN WRITING TO THE ARCHITECT IN THE EVENT OF ANY DISCREPANCIES OR OMISSIONS IN THE CONTRACT DOCUMENTS.	WHEELER & GRAY STRUCTURAL ENGINEERS	REVISIONS:	Job No. 2-2-40 Sheet No. 5289 Date: 1/1/41 Scale: AS SHOWN	EDDY AND PANTER ARCHITECTS A. I. A. 2901 H. Street Bakersfield, California FA. 59048	STRUCTURAL ELEVATIONS & DETAILS MULTI-USE BLDG - LINCOLN JR. HIGH SCHOOL BAKERSFIELD CITY SCHOOL DISTRICT BAKERSFIELD KERN COUNTY CALIFORNIA	S-4 of 5
					CONTRACT NO. 2-2-40 SHEET NO. 5289 DATE: 1/1/41 SCALE: AS SHOWN			