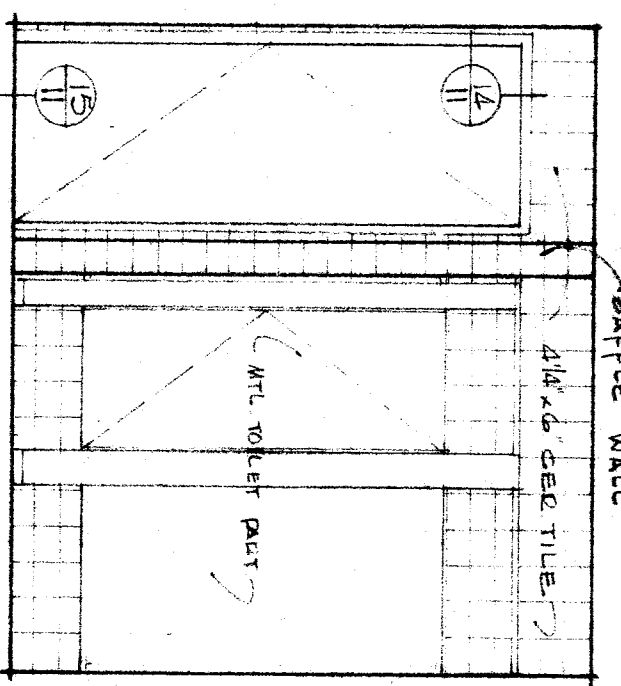
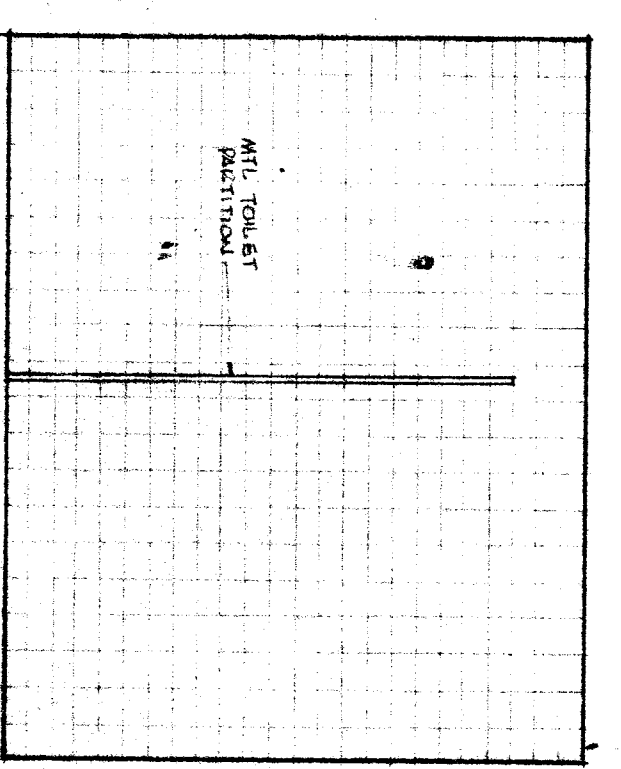


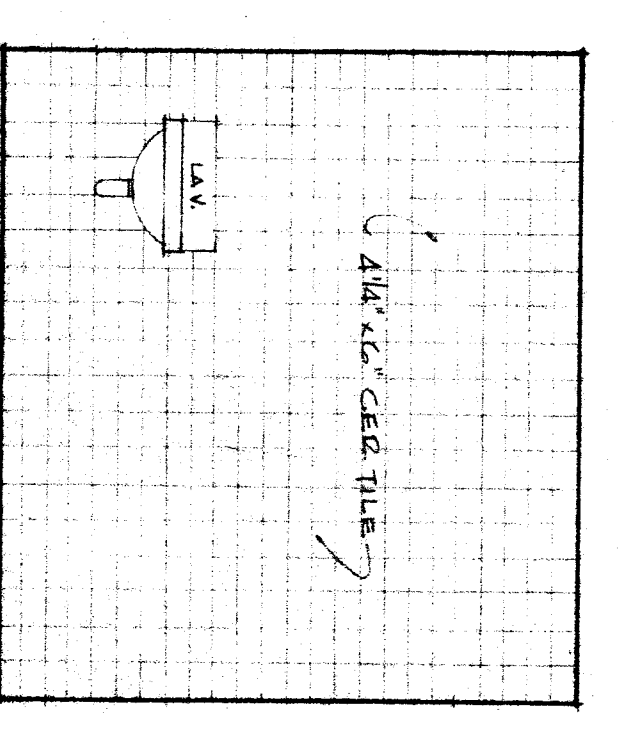
BOYS' SOUTH
3/8" = 1'-0"



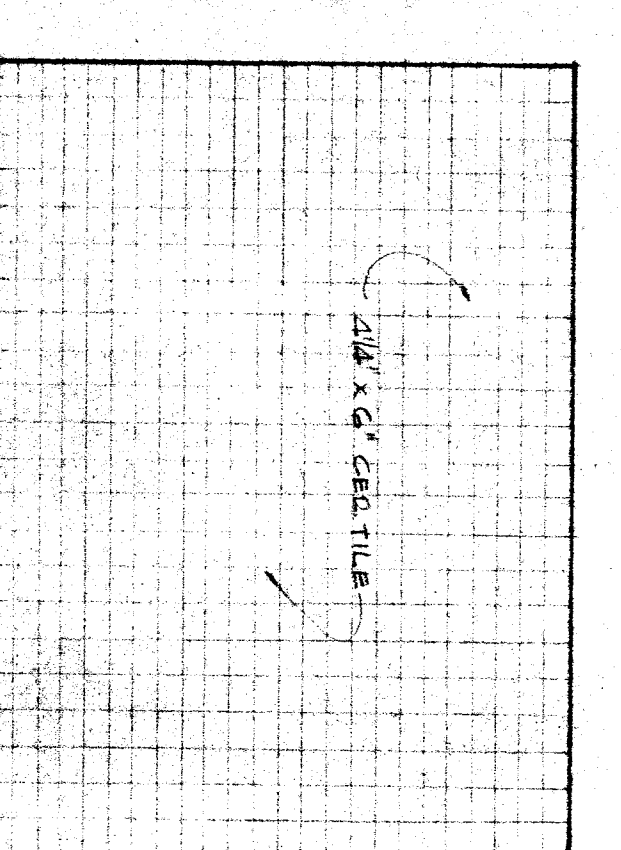
BOYS' WEST
3/8" = 1'-0"



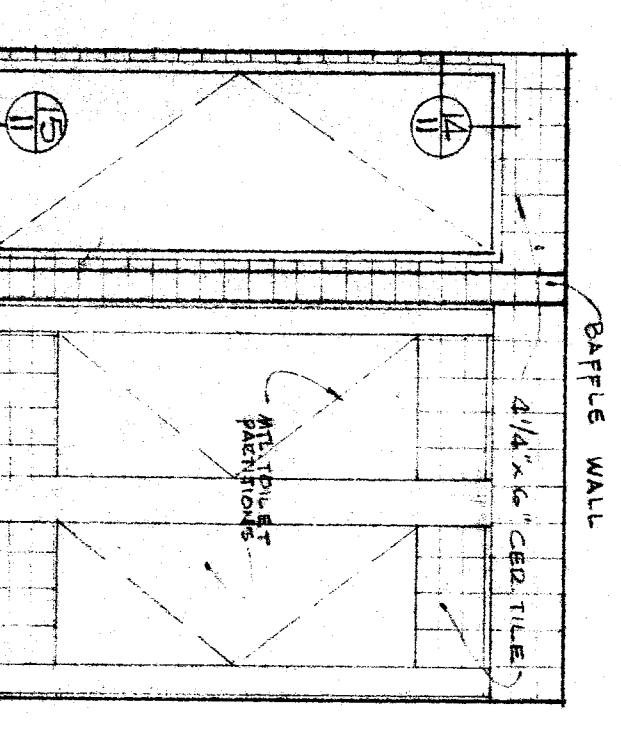
GIRLS' NORTH
3/8" = 1'-0"



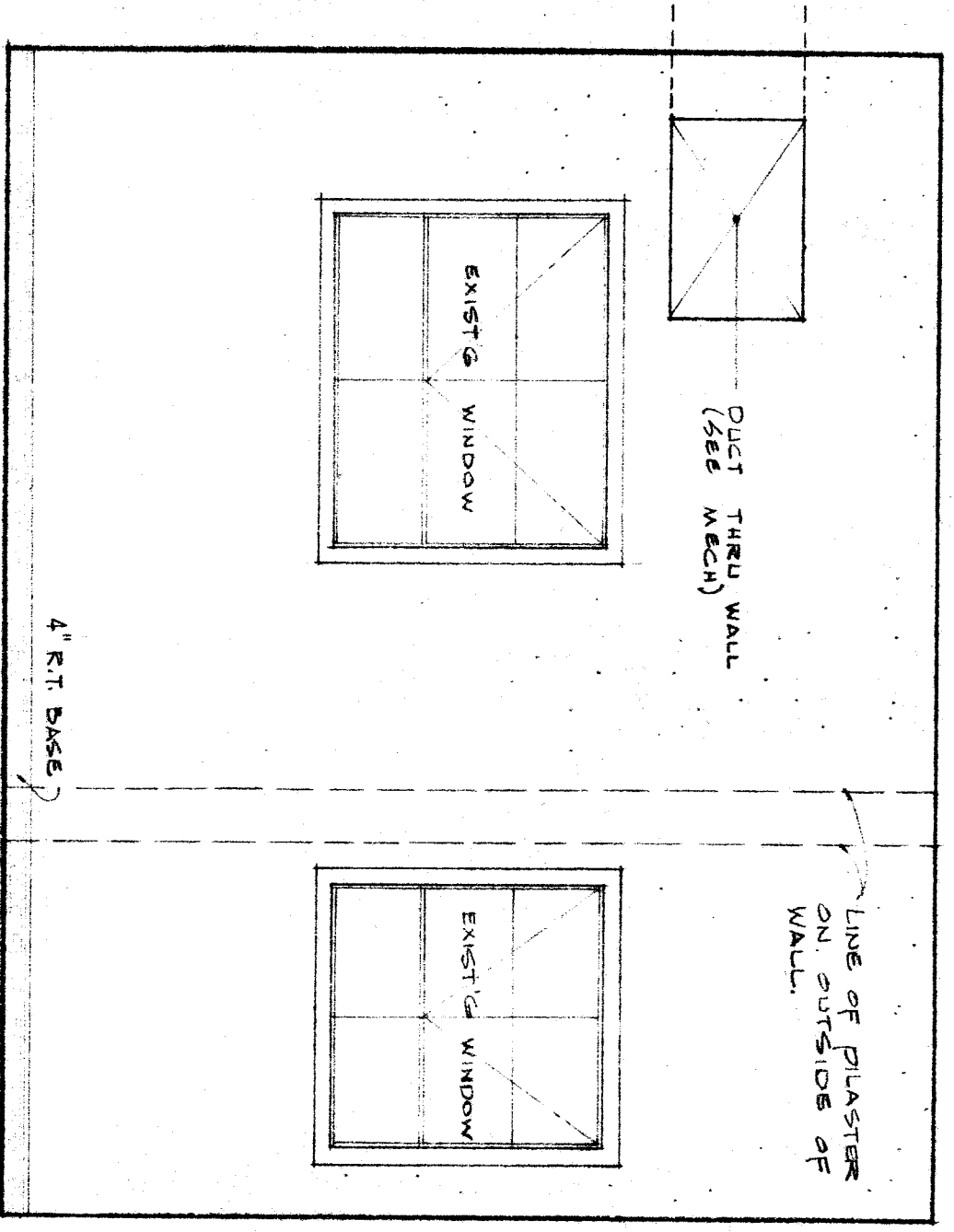
GIRLS' EAST
3/8" = 1'-0"



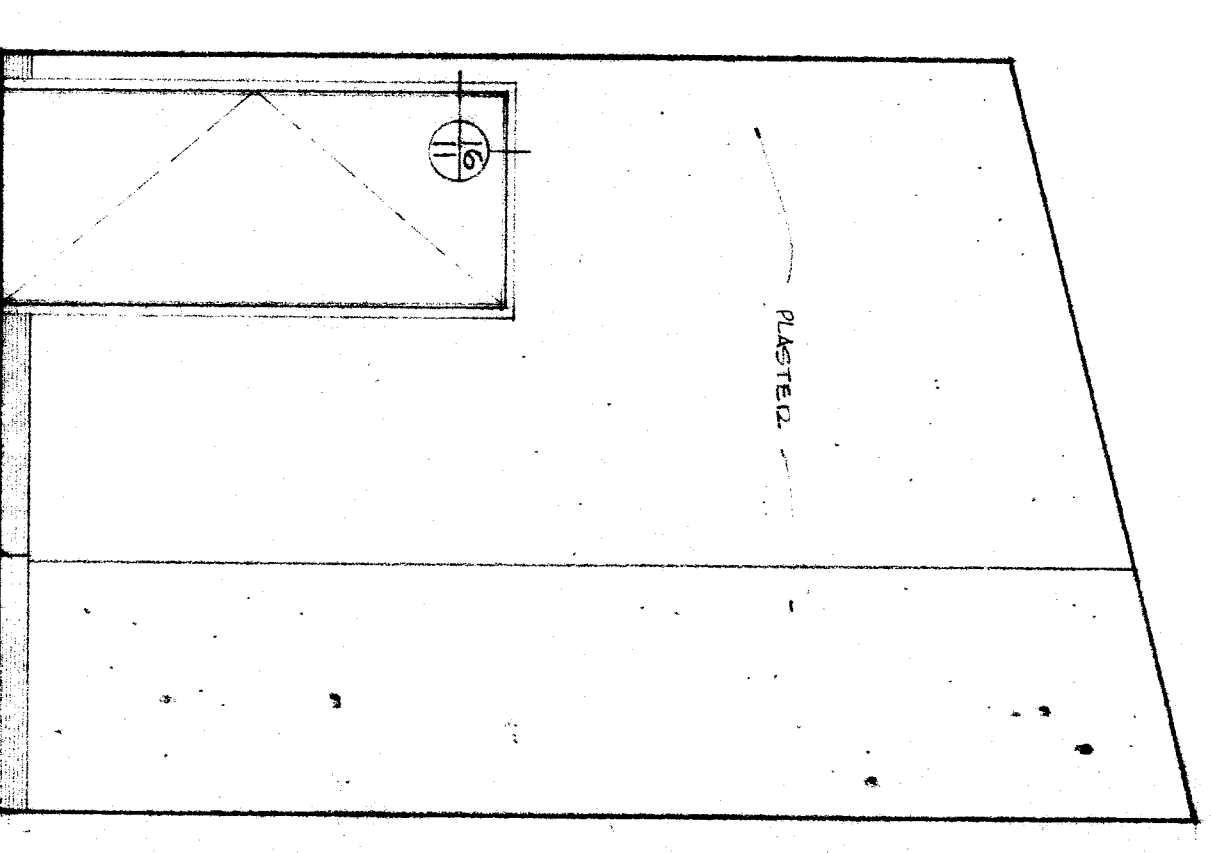
GIRLS' SOUTH
3/8" = 1'-0"



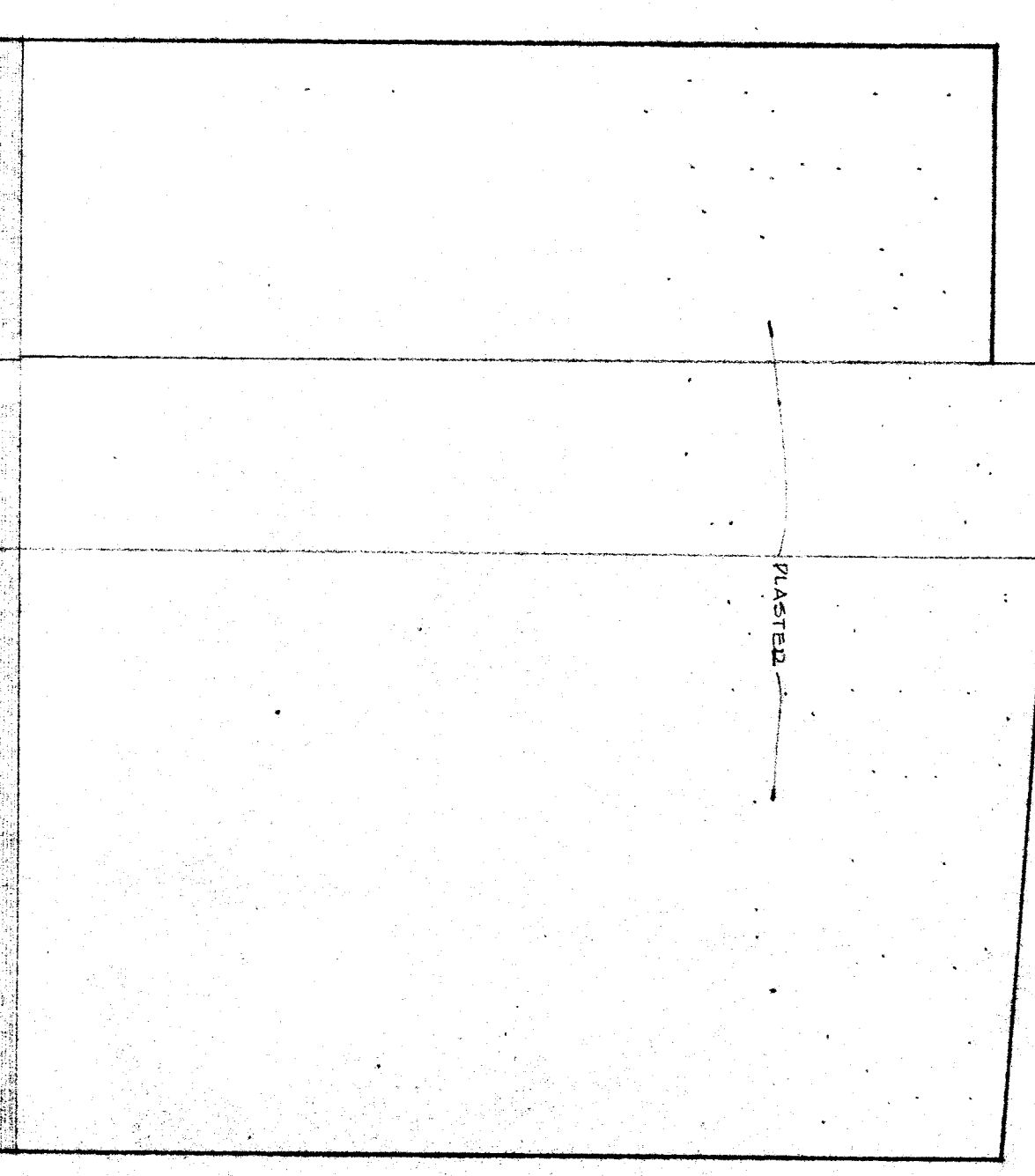
GIRLS' WEST
3/8" = 1'-0"



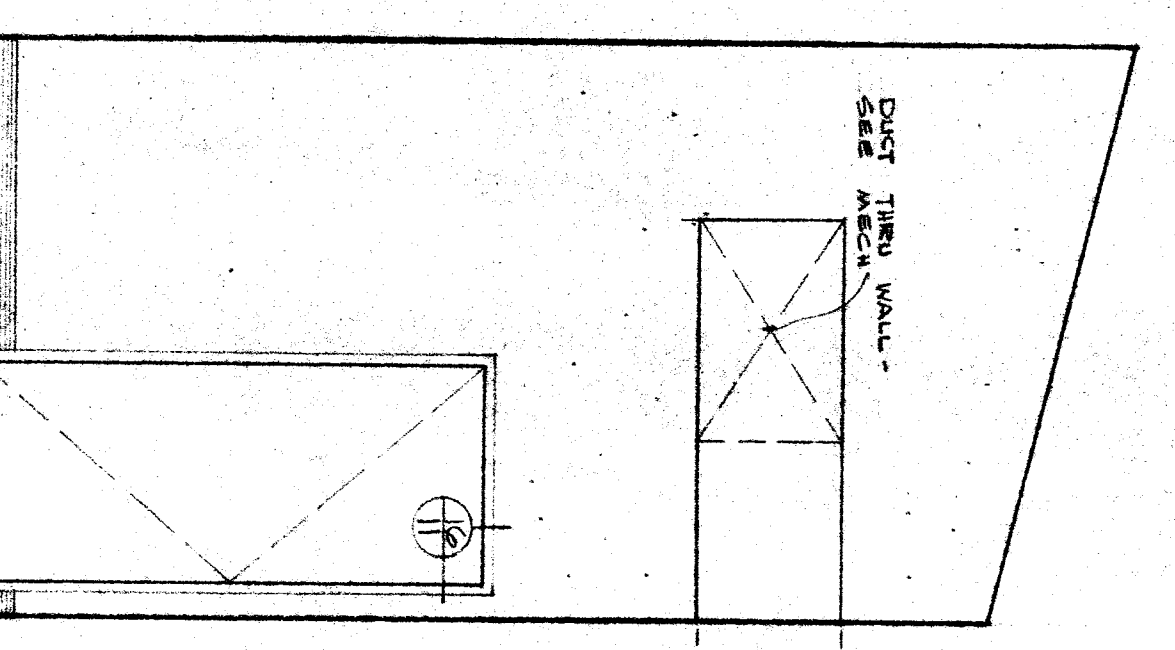
DRESSG RM NORTH
3/8" = 1'-0"



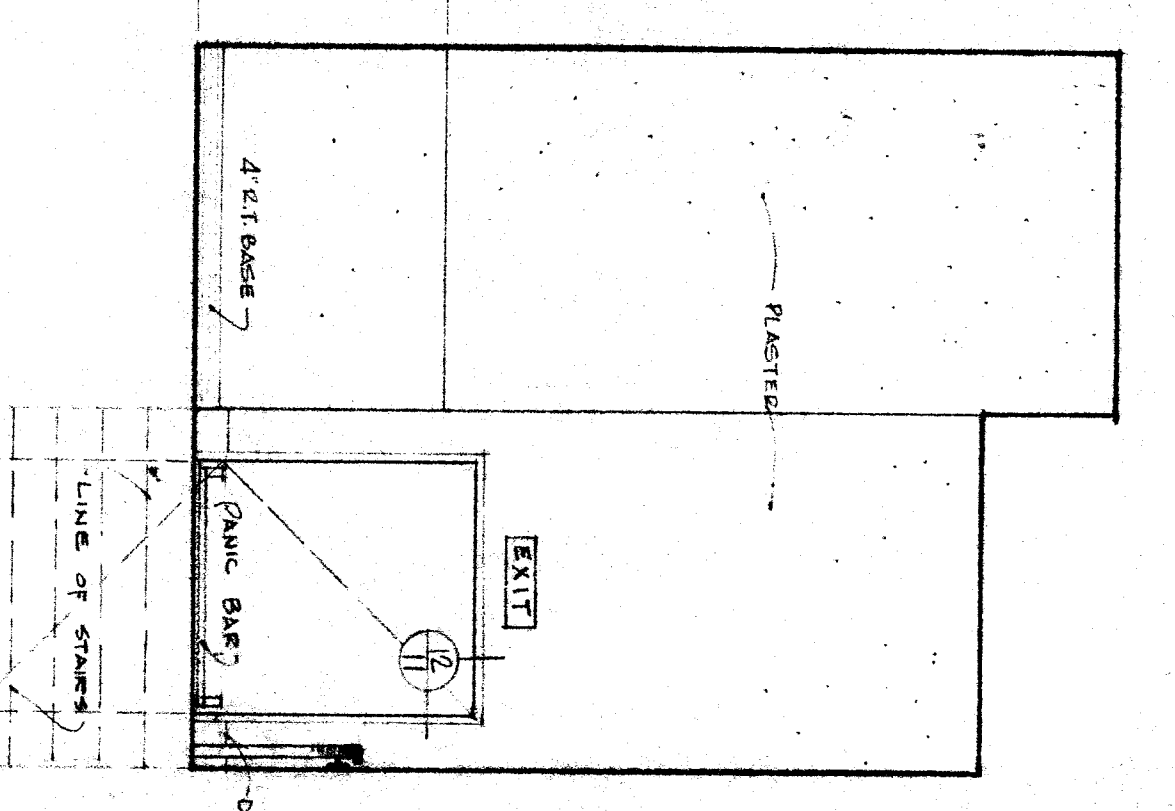
DRESSG RM EAST
3/8" = 1'-0"



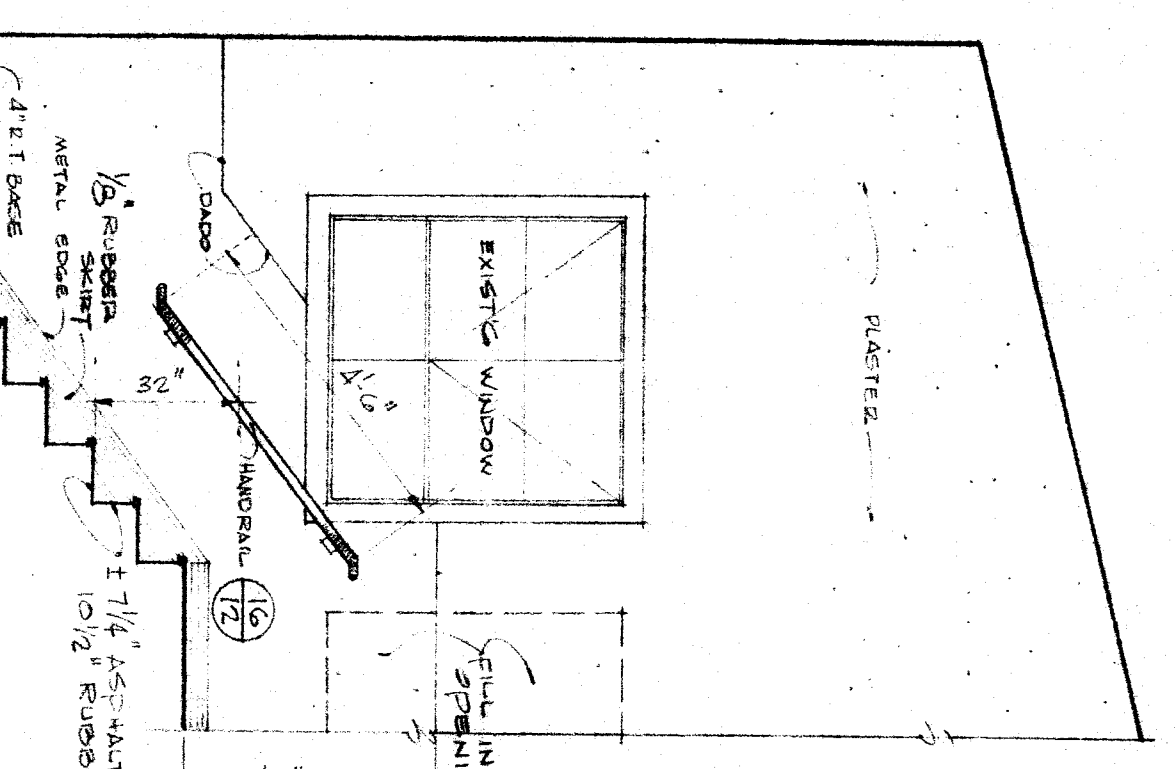
DRESSG RM SOUTH
3/8" = 1'-0"



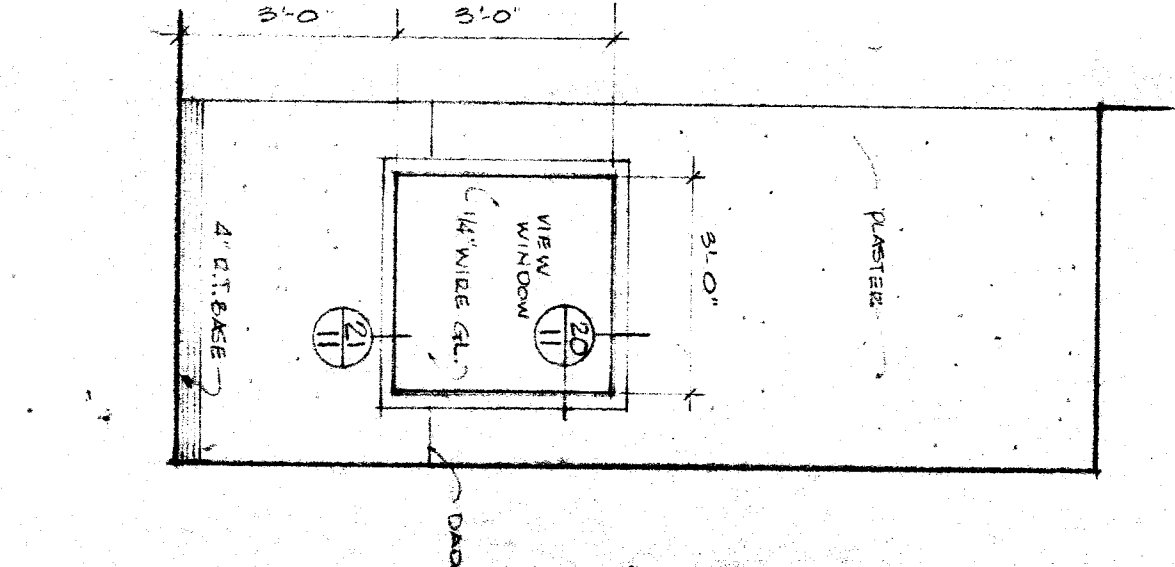
DRESSG RM WEST
3/8" = 1'-0"



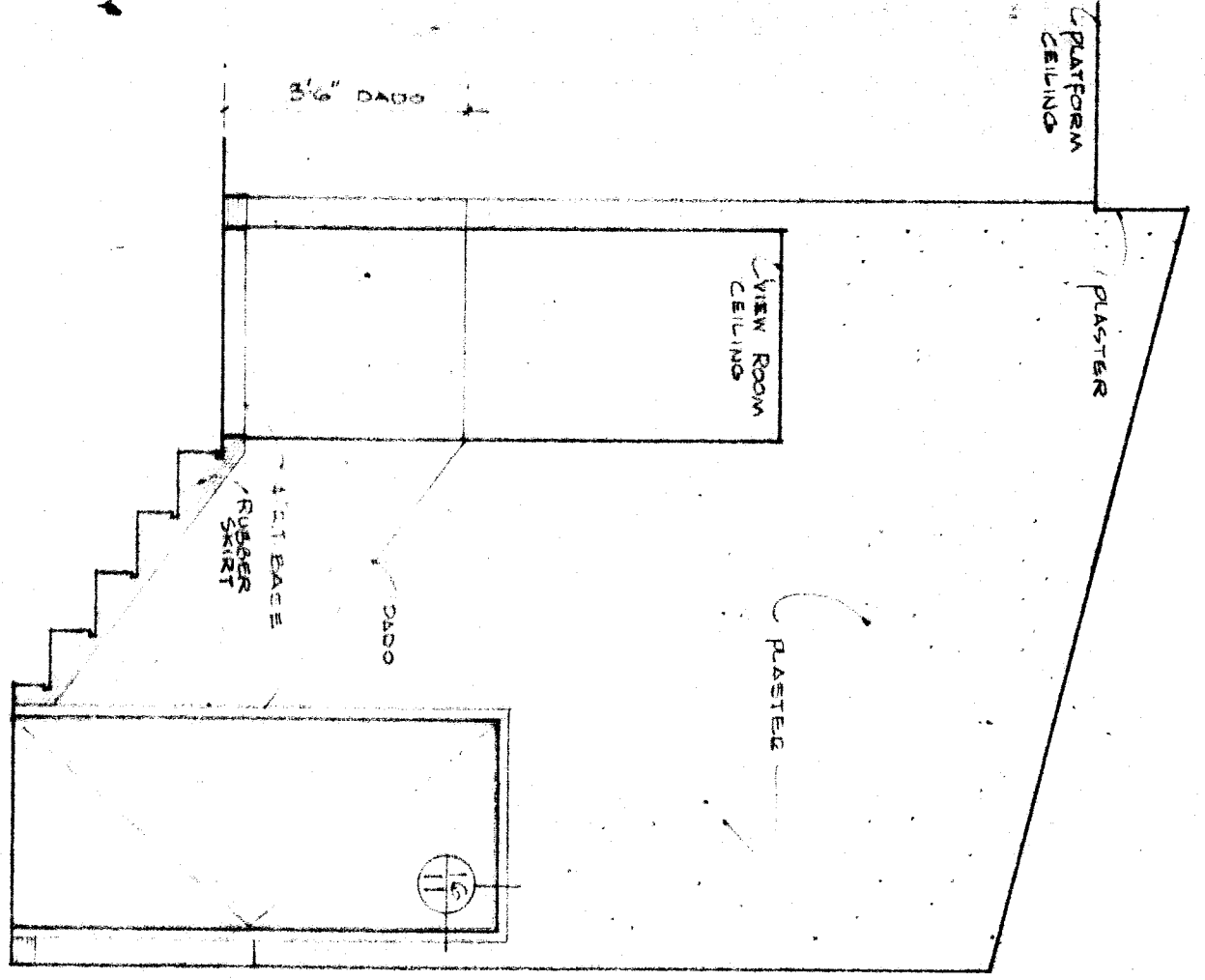
VIEW RM NORTH
3/8" = 1'-0"



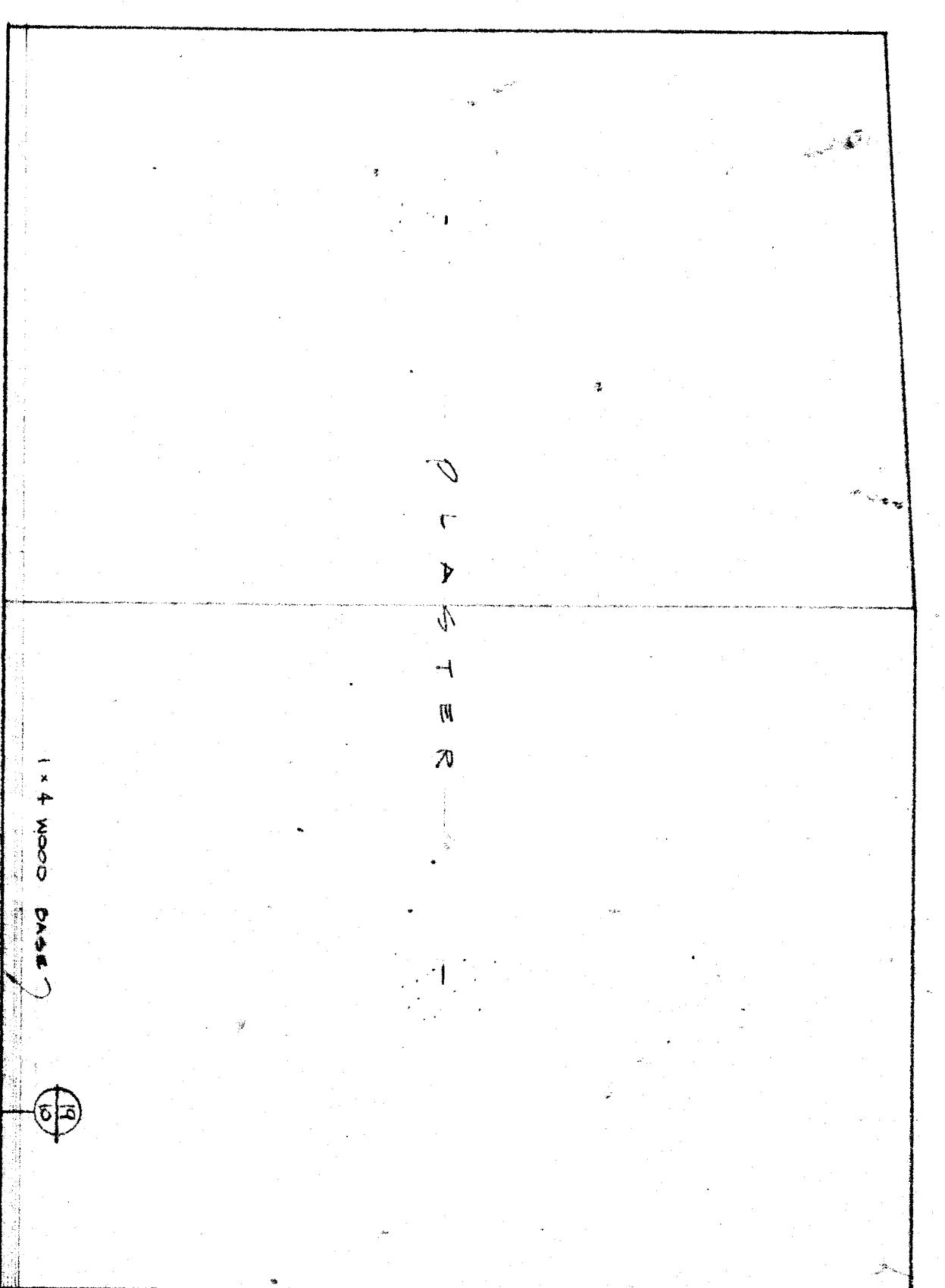
VIEW RM EAST
3/8" = 1'-0"



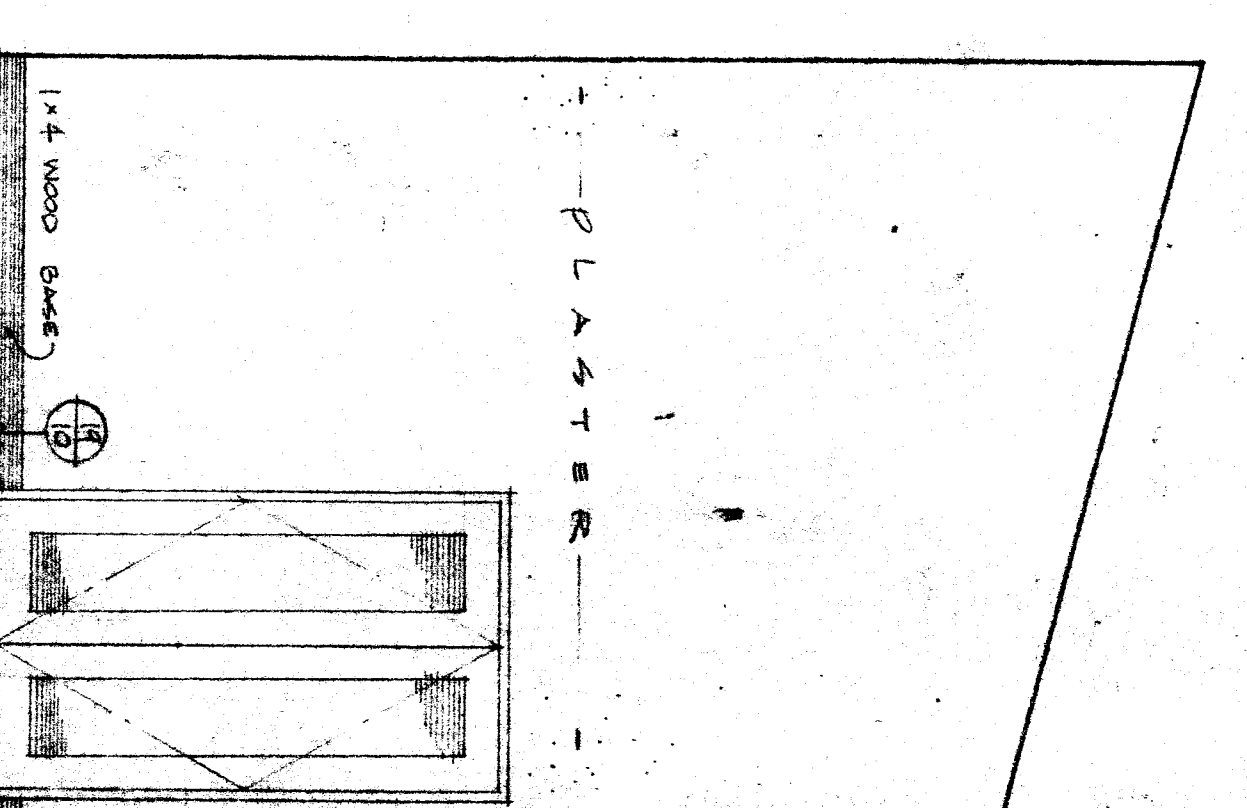
VIEW RM SOUTH
3/8" = 1'-0"



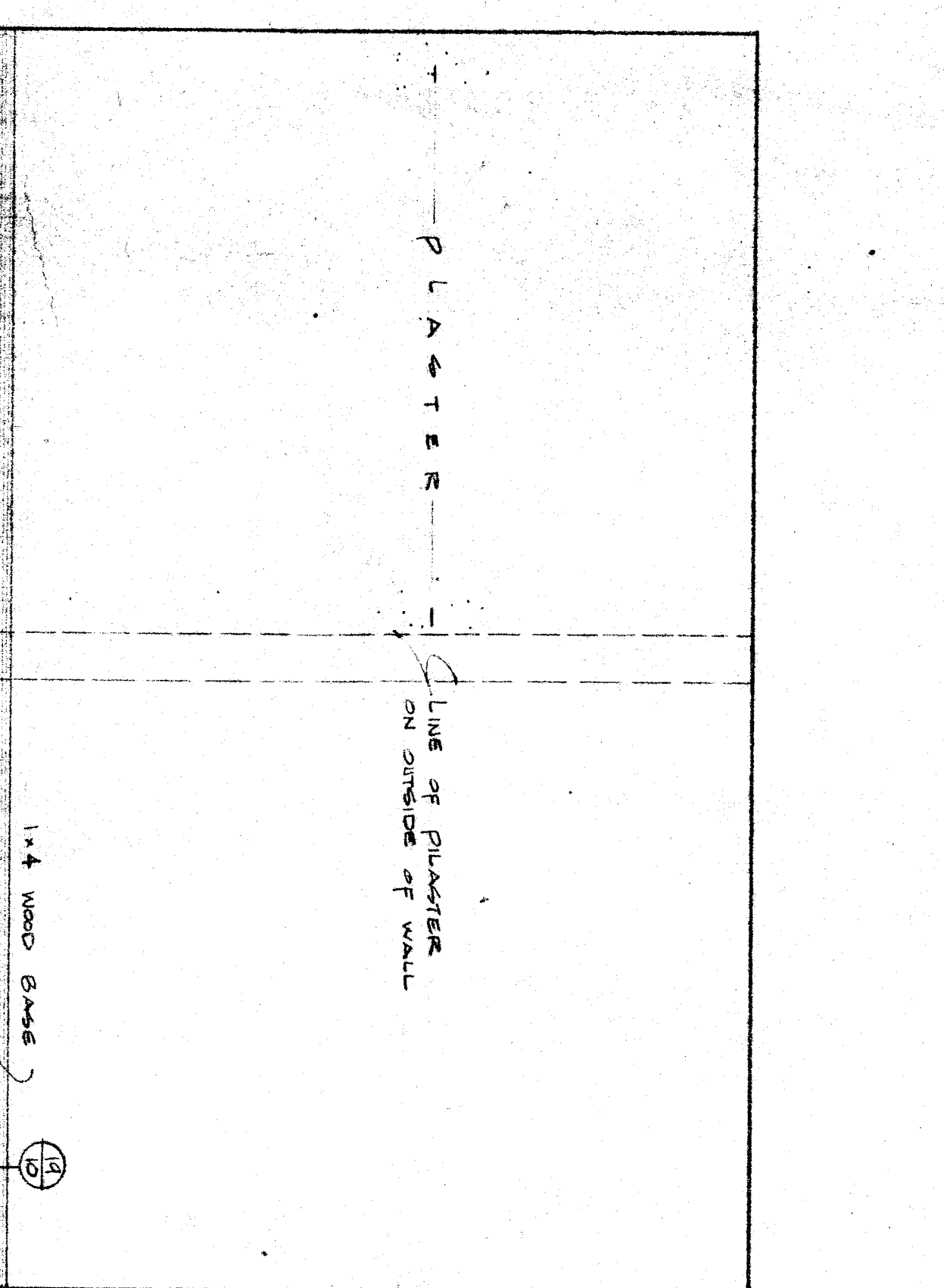
VIEW RM WEST
3/8" = 1'-0"



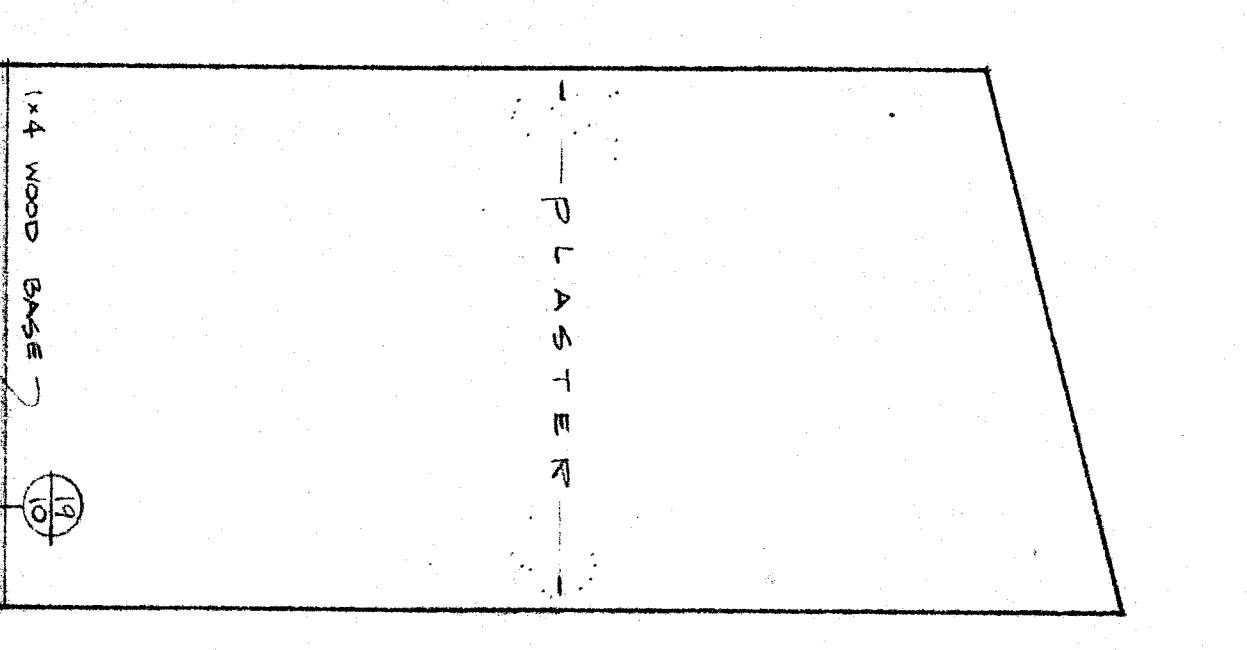
MECH. RM NORTH
3/8" = 1'-0"



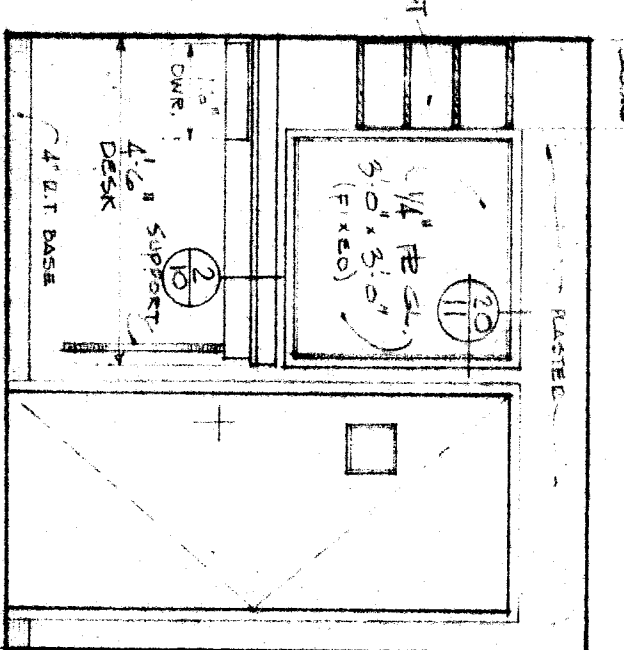
MECH. RM EAST
3/8" = 1'-0"



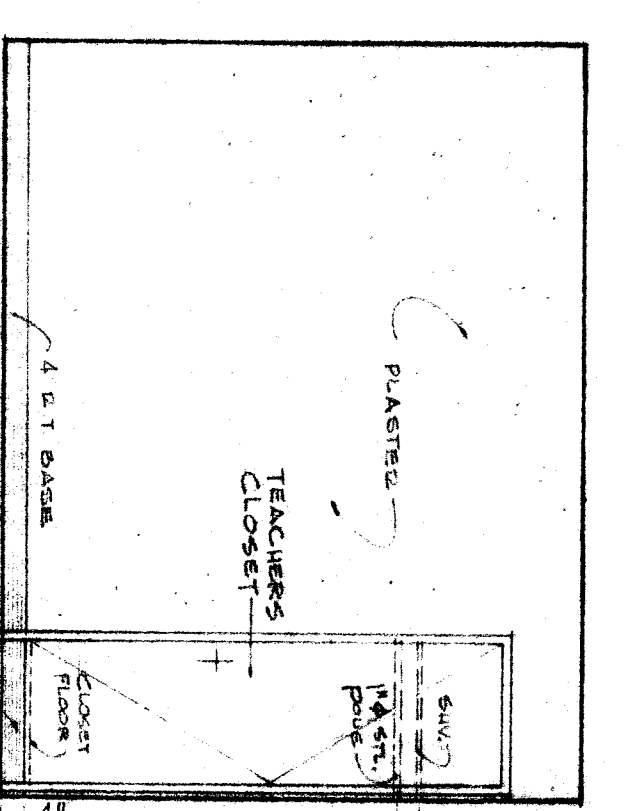
MECH. RM SOUTH
3/8" = 1'-0"



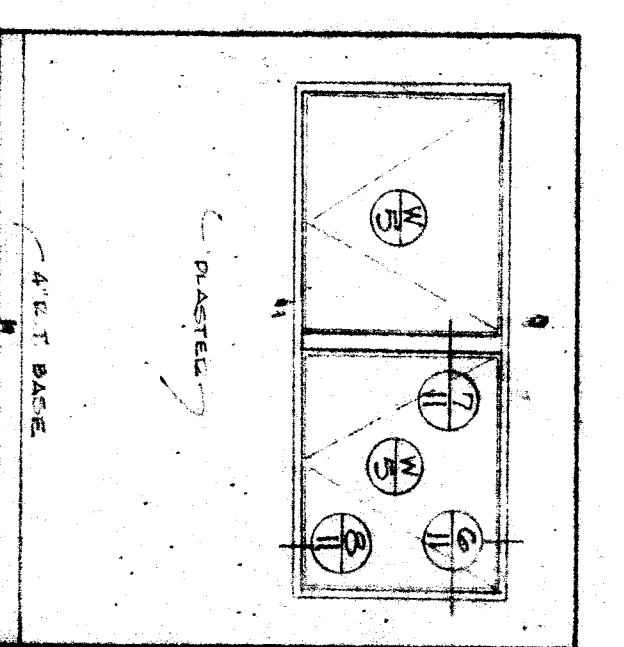
MECH. RM WEST
3/8" = 1'-0"



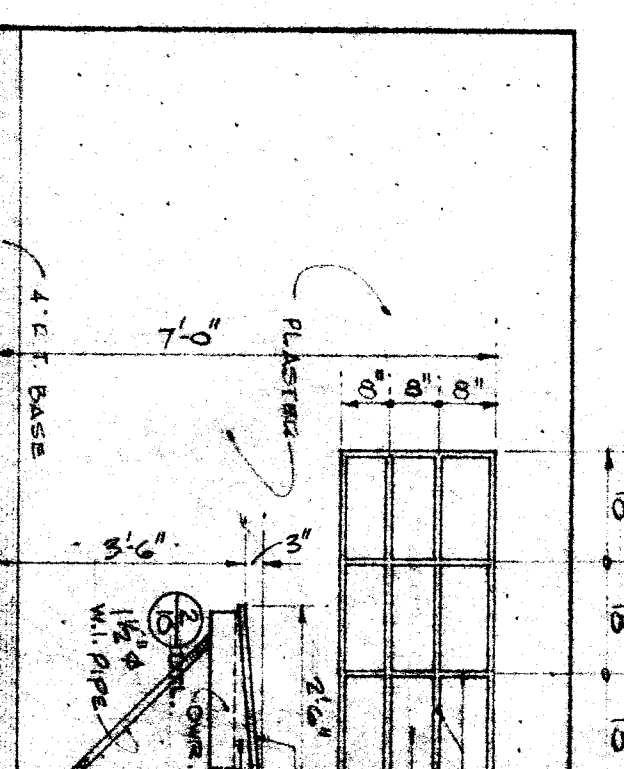
OFFICE NORTH
3/8" = 1'-0"



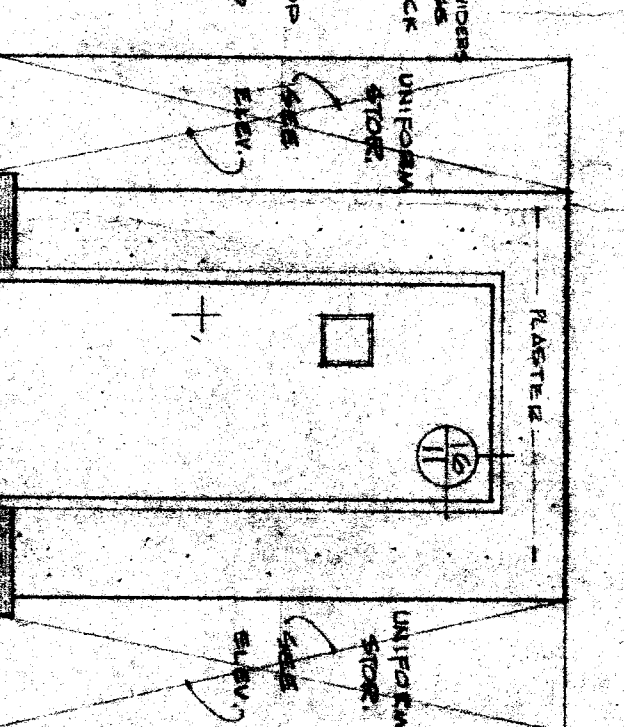
OFFICE EAST
3/8" = 1'-0"



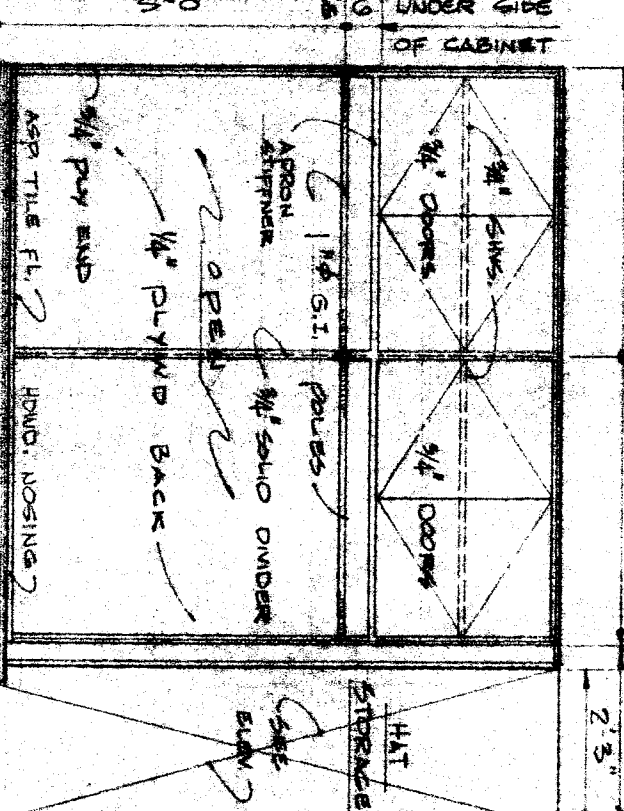
OFFICE SOUTH
3/8" = 1'-0"



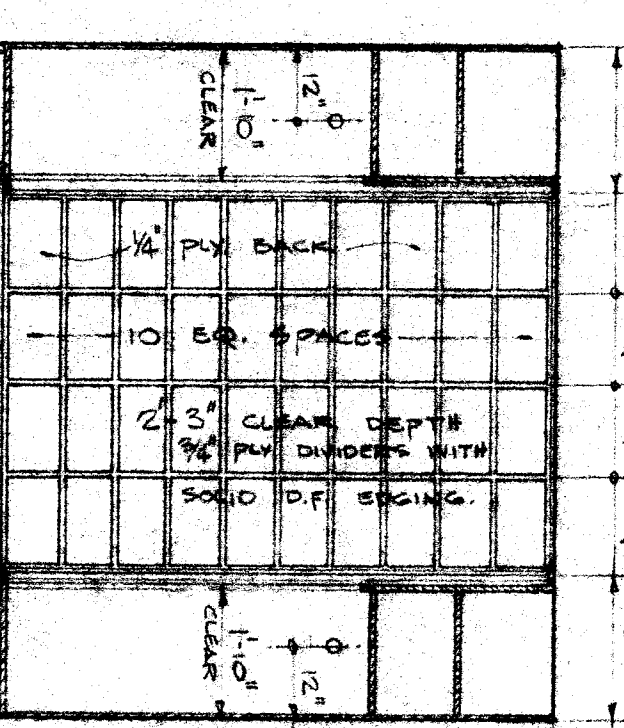
OFFICE WEST
3/8" = 1'-0"



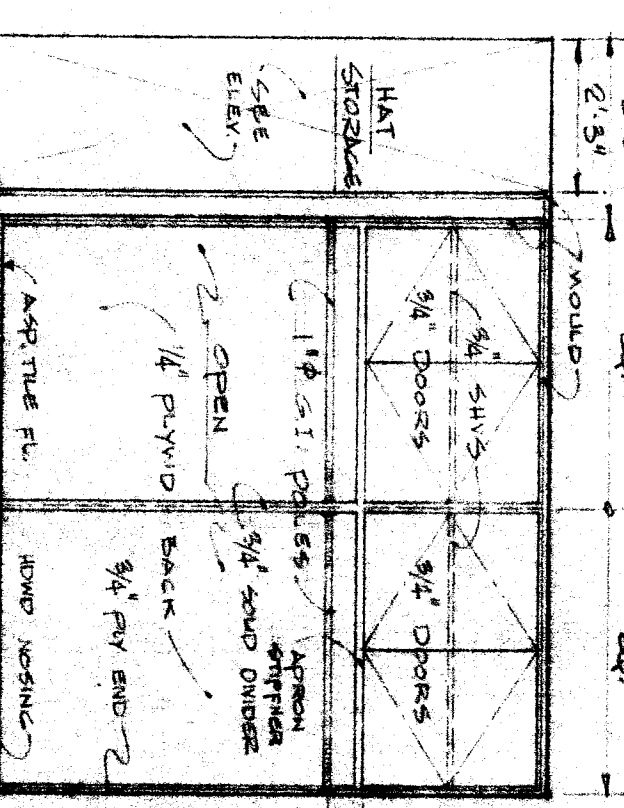
UNIFORM NORTH
3/8" = 1'-0"



UNIFORM EAST
3/8" = 1'-0"



UNIFORM SOUTH
3/8" = 1'-0"



UNIFORM WEST
3/8" = 1'-0"

BAKERFIELD CITY SCHOOL DISTRICT APPROVED BY: [Signature]

DATE: 3/2/40
DRAWN BY: [Signature]
CHECKED BY: [Signature]

REVISIONS

DATE: 3/2/40
DRAWN BY: [Signature]
CHECKED BY: [Signature]

EDDY AND PAYNTER ARCHITECTS A. I. A.
2901 H. Street, Bakersfield, California FA. 59048

INTERIOR ELEVATIONS
MULTI-USE BLDG. LINCOLN JR. HIGH SCHOOL
BAKERFIELD CITY SCHOOL DISTRICT
BAKERFIELD KERN COUNTY CALIFORNIA

