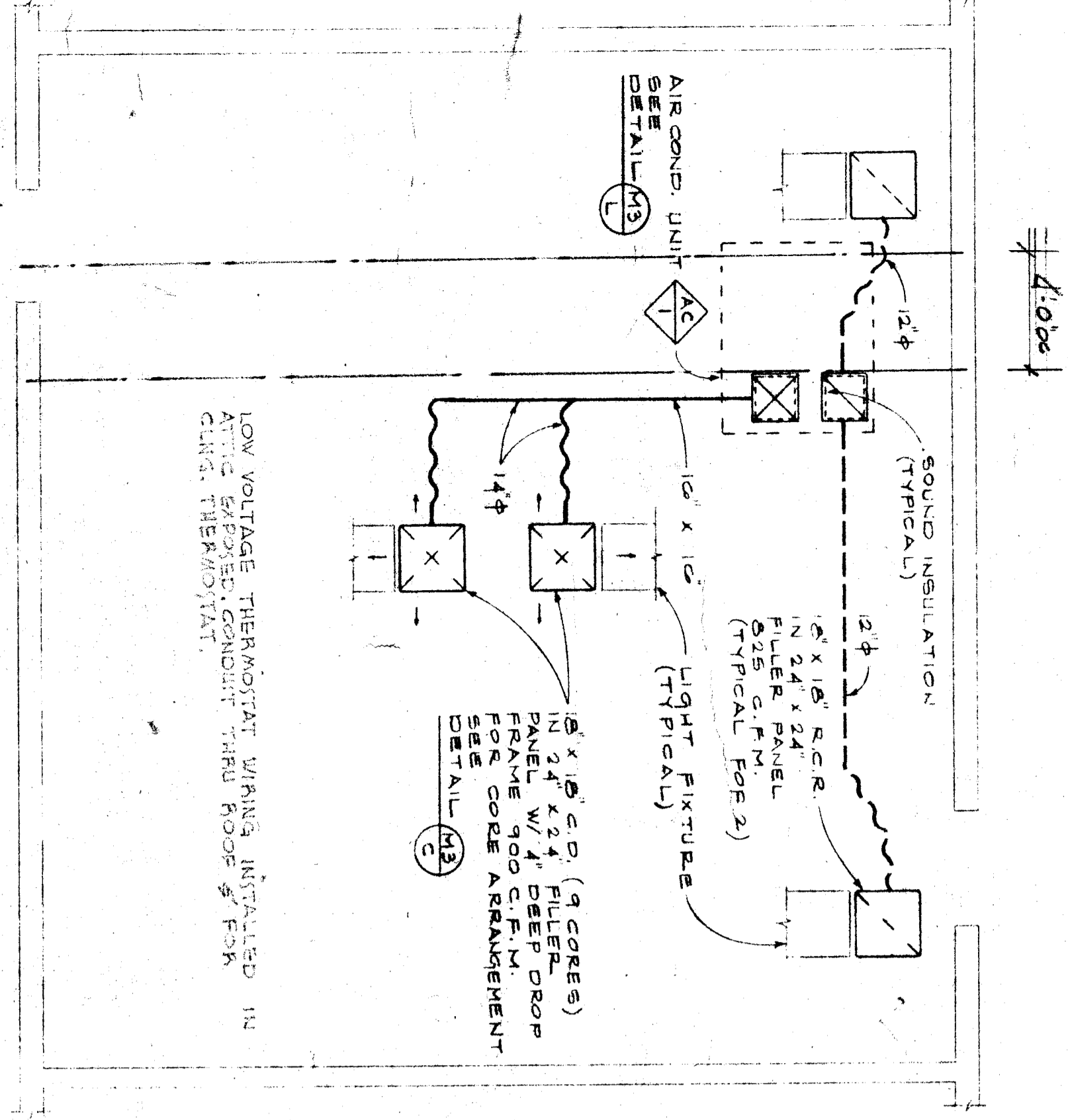


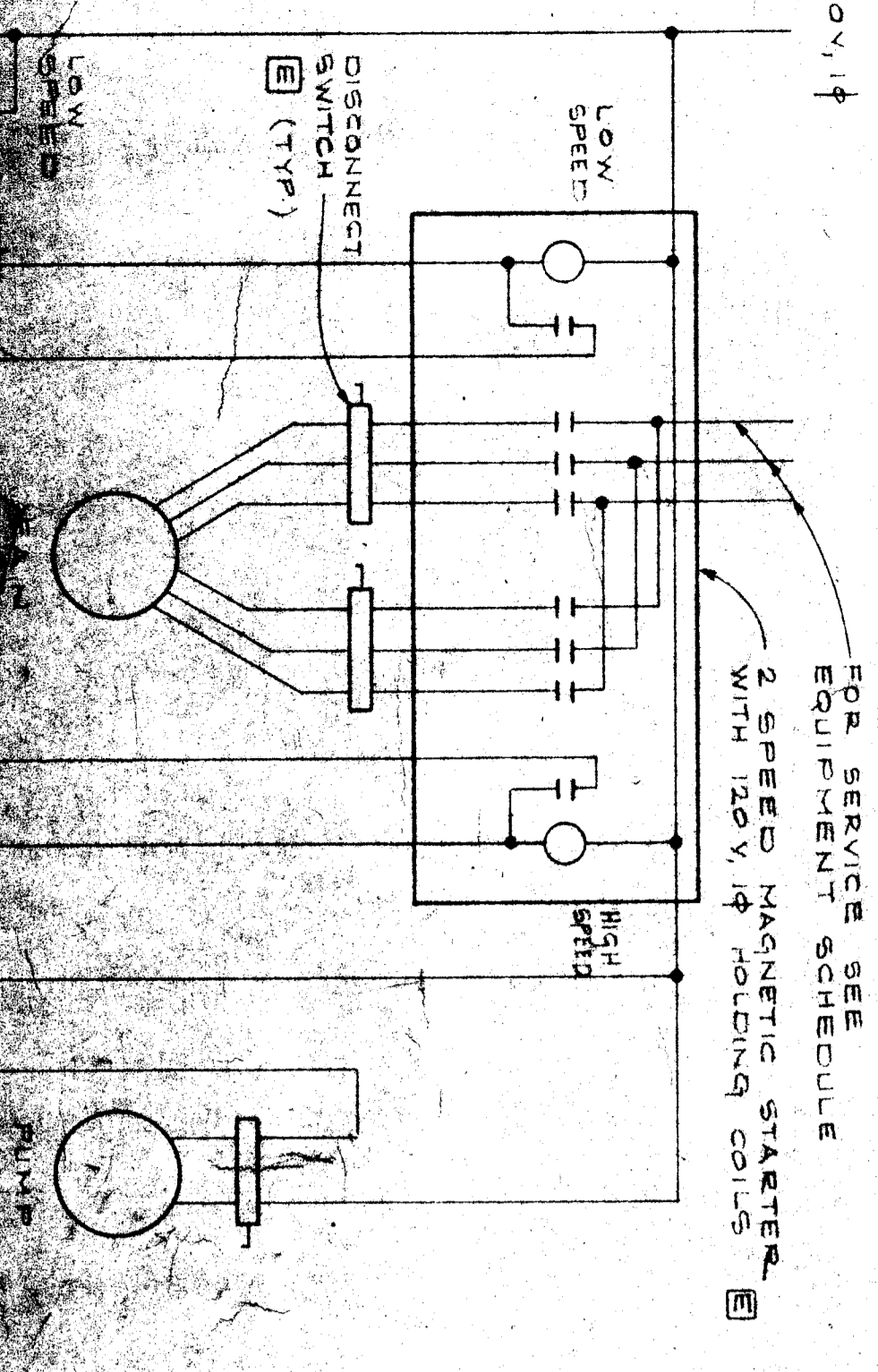
1	REPAIR AIR DUCT
2	REPAIR AIR DUCT
3	INDIRECT WATER
4	INDIRECT WATER
5	INDIRECT WATER
6	INDIRECT WATER
7	INDIRECT WATER
8	INDIRECT WATER
9	INDIRECT WATER
10	INDIRECT WATER
11	INDIRECT WATER
12	INDIRECT WATER
13	INDIRECT WATER
14	INDIRECT WATER
15	INDIRECT WATER
16	INDIRECT WATER
17	INDIRECT WATER
18	INDIRECT WATER
19	INDIRECT WATER
20	INDIRECT WATER
21	INDIRECT WATER
22	INDIRECT WATER
23	INDIRECT WATER
24	INDIRECT WATER
25	INDIRECT WATER
26	INDIRECT WATER
27	INDIRECT WATER
28	INDIRECT WATER
29	INDIRECT WATER
30	INDIRECT WATER
31	INDIRECT WATER
32	INDIRECT WATER
33	INDIRECT WATER
34	INDIRECT WATER
35	INDIRECT WATER
36	INDIRECT WATER
37	INDIRECT WATER
38	INDIRECT WATER
39	INDIRECT WATER
40	INDIRECT WATER
41	INDIRECT WATER
42	INDIRECT WATER
43	INDIRECT WATER
44	INDIRECT WATER
45	INDIRECT WATER
46	INDIRECT WATER
47	INDIRECT WATER
48	INDIRECT WATER
49	INDIRECT WATER
50	INDIRECT WATER
51	INDIRECT WATER
52	INDIRECT WATER
53	INDIRECT WATER
54	INDIRECT WATER
55	INDIRECT WATER
56	INDIRECT WATER
57	INDIRECT WATER
58	INDIRECT WATER
59	INDIRECT WATER
60	INDIRECT WATER
61	INDIRECT WATER
62	INDIRECT WATER
63	INDIRECT WATER
64	INDIRECT WATER
65	INDIRECT WATER
66	INDIRECT WATER
67	INDIRECT WATER
68	INDIRECT WATER
69	INDIRECT WATER
70	INDIRECT WATER
71	INDIRECT WATER
72	INDIRECT WATER
73	INDIRECT WATER
74	INDIRECT WATER
75	INDIRECT WATER
76	INDIRECT WATER
77	INDIRECT WATER
78	INDIRECT WATER
79	INDIRECT WATER
80	INDIRECT WATER
81	INDIRECT WATER
82	INDIRECT WATER
83	INDIRECT WATER
84	INDIRECT WATER
85	INDIRECT WATER
86	INDIRECT WATER
87	INDIRECT WATER
88	INDIRECT WATER
89	INDIRECT WATER
90	INDIRECT WATER
91	INDIRECT WATER
92	INDIRECT WATER
93	INDIRECT WATER
94	INDIRECT WATER
95	INDIRECT WATER
96	INDIRECT WATER
97	INDIRECT WATER
98	INDIRECT WATER
99	INDIRECT WATER
100	INDIRECT WATER

BUIL. NO.	ROOM NAME	SUPPLY	FAN	E.B.C.	HP	V	Φ	STAGE	FURNACE			DIRECT EXPANSION			CONDENSING UNIT			FILTERS			D.A.M.P.E.R.S.	OPERATING WEIGHT	SER.	REMARKS		
									INPUT BTU/HR.	OUTPUT BTU/HR.	EUT. AIR.	AREA VEL. SQ. FT./HR.	EUT. AIR. CAPACITY BTU/HR.	AREA VEL. SQ. FT./HR.	EUT. AIR. CAPACITY BTU/HR.	AREA VEL. SQ. FT./HR.	SIZE OF	SIZE	O.A.	R.A.						
AC-1	TYPICAL CLASSROOM	1,800	.5	1	140	3	1.071	125,000	93,750	60,000	42,500	4.0	150	8.0	1.0	1.0	1.0	1.0	1.0	1.0	1.0	875 LBS.	7.0	1		
AC-2	COOKING ROOM	3,000	.7	2	1	1	1.071	150,000	112,500	65,000	7.5	140	8.0	1.0	1.0	1.0	1.0	1.0	1.0	1.0	300	2,700	1,050 LBS.	6.7	1	
AC-3	SEWING ROOM	1,800	.5	1	1	1	1.071	125,000	93,750	60,000	4.0	150	8.0	1.0	1.0	1.0	1.0	1.0	1.0	1.0	300	2,700	1,050 LBS.	6.7	1	
AC-4	ADMIN. EAST ZONE	1,200	.3	1/2	1	1	1.071	90,000	67,500	40,000	4.0	150	8.0	1.0	1.0	1.0	1.0	1.0	1.0	1.0	300	2,700	1,050 LBS.	6.7	1	
AC-5	ADMIN. WEST ZONE	1,200	.3	1/2	1	1	1.071	90,000	67,500	40,000	4.0	150	8.0	1.0	1.0	1.0	1.0	1.0	1.0	1.0	300	2,700	1,050 LBS.	6.7	1	
AC-6	LIBRARY	2,200	.5	3/4	1	1	1.071	120,000	90,000	55,000	4.0	150	8.0	1.0	1.0	1.0	1.0	1.0	1.0	1.0	300	2,700	1,050 LBS.	6.7	1	
AC-7	ART ROOM	2,200	.5	3/4	1	1	1.071	120,000	90,000	55,000	4.0	150	8.0	1.0	1.0	1.0	1.0	1.0	1.0	1.0	300	2,700	1,050 LBS.	6.7	1	
AC-8	VOCAL MUSIC ROOM	1,800	.5	1	1	1	1.071	125,000	93,750	60,000	4.0	150	8.0	1.0	1.0	1.0	1.0	1.0	1.0	1.0	300	2,700	1,050 LBS.	6.7	1	
AC-9	HAND ROOM	3,000	.7	2	1	1	1.071	150,000	112,500	65,000	7.5	140	8.0	1.0	1.0	1.0	1.0	1.0	1.0	1.0	300	2,700	1,050 LBS.	6.7	1	
AC-10	FACULTY CONFERENCE	1,200	.3	3/4	1	1	1.071	90,000	67,500	40,000	4.0	150	8.0	1.0	1.0	1.0	1.0	1.0	1.0	1.0	300	2,700	1,050 LBS.	6.7	1	
UH-1	WOOD SHOP	1,195	.5	1/2	120	1	1.071	105,000	78,750	48,000	4.0	150	8.0	1.0	1.0	1.0	1.0	1.0	1.0	1.0	300	2,700	1,050 LBS.	6.7	2	REGRD.
UH-2	METAL SHOP	850	.5	1/2	120	1	1.071	75,000	56,250	33,000	4.0	150	8.0	1.0	1.0	1.0	1.0	1.0	1.0	1.0	300	2,700	1,050 LBS.	6.7	2	REGRD.
DF-1	CATERING	9,400	.5	—	—	—	—	2,072	3,150,000	2,362,500	1,438,000	11.8	183	—	—	—	—	—	—	—	—	—	—	—	—	—
EC-1	WOOD SHOP	9,100	.5	1	150	3	—	—	—	—	—	—	—	—	—	—	—	—	—	—	—	—	—	—	—	—
EC-2	METAL SHOP	9,800	.5	1	150	3	—	—	—	—	—	—	—	—	—	—	—	—	—	—	—	—	—	—	—	—
EC-3	CATERING	9,700	.5	3/4	150	3	—	—	—	—	—	—	—	—	—	—	—	—	—	—	—	—	—	—	—	—

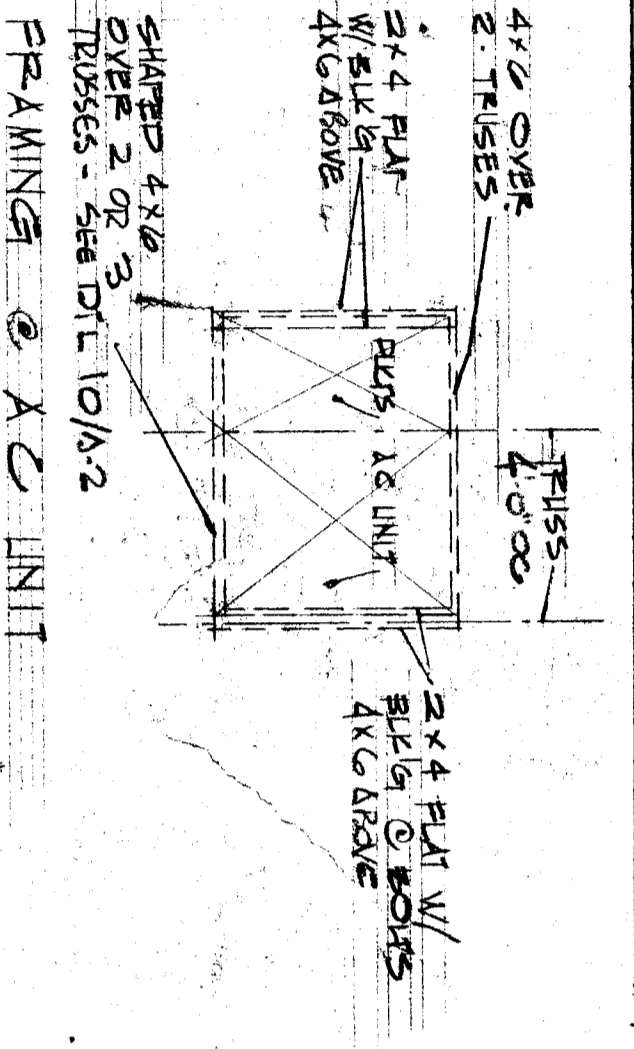
① CONDENSER FAN RATED @ 400 V, 1/4
 ② CONDENSER FAN RATED @ 208 V, 1/4
 * UNIT FURNISHED WITH VERTICAL TO HORIZONTAL CONVERSION KIT



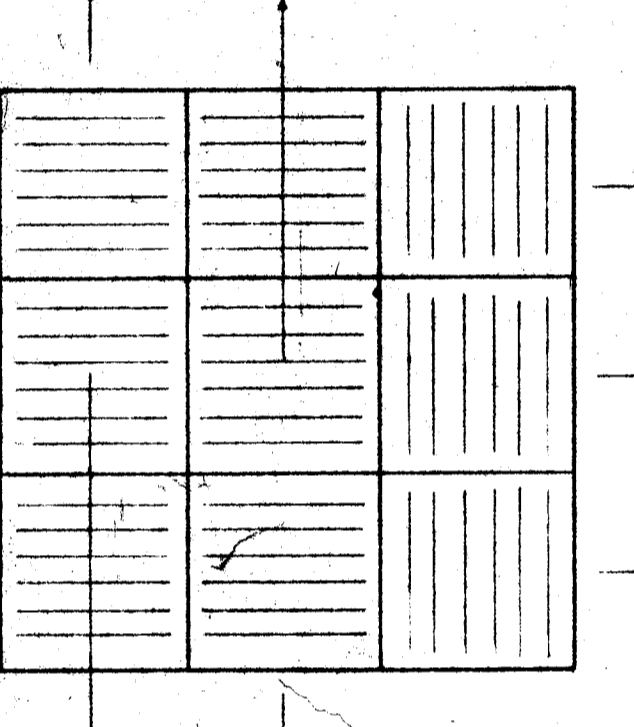
TYPICAL CLASSROOM PLAN
 SCALE: 1/4" = 1'-0"
 DETAIL: 1/4"



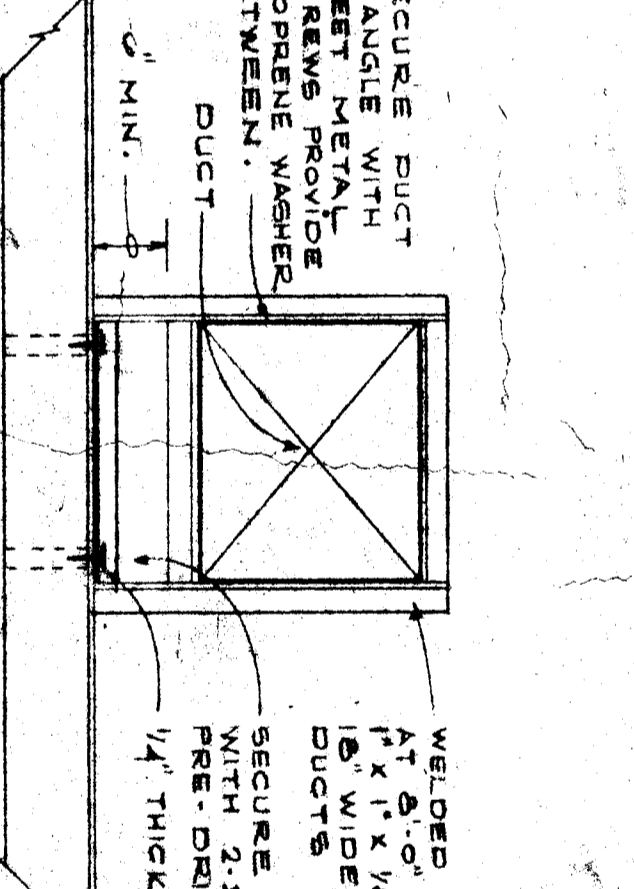
120V, 1ϕ
 EQUIPMENT SEE EQUIPMENT SCHEDULE
 2 SPEED MAGNETIC STARTER
 LOW SPEED
 HIGH SPEED
 DISCONNECT SWITCH (TYP)



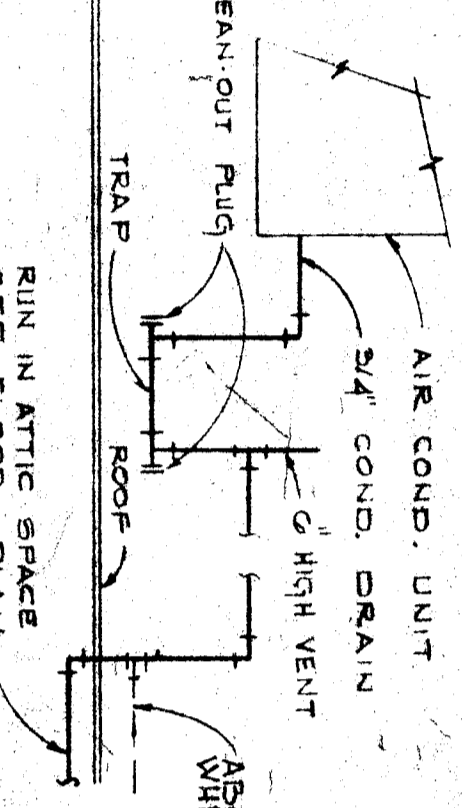
TYPICAL SQUARE CEILING DIFFUSER
 NO SCALE: DETAIL: 1/4"



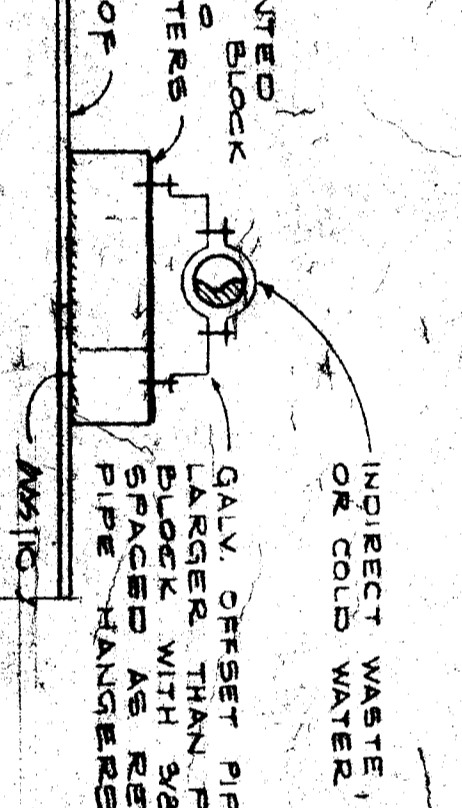
TYPICAL CLASSROOM CEILING DIFFUSER
 NO SCALE: DETAIL: 1/4"



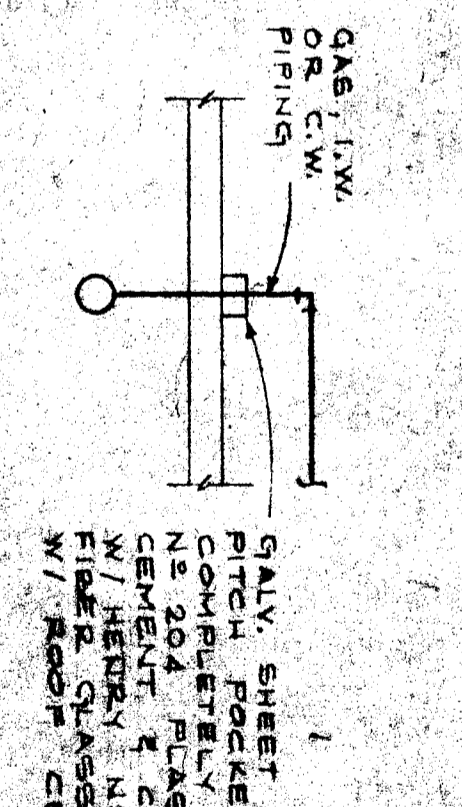
DUCT ON ROOF SUPPORT
 NO SCALE: DETAIL: 1/4"



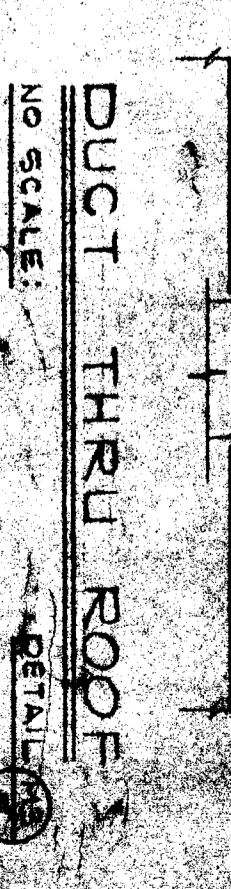
CONDENSATE DRAIN
 NO SCALE: DETAIL: 1/4"



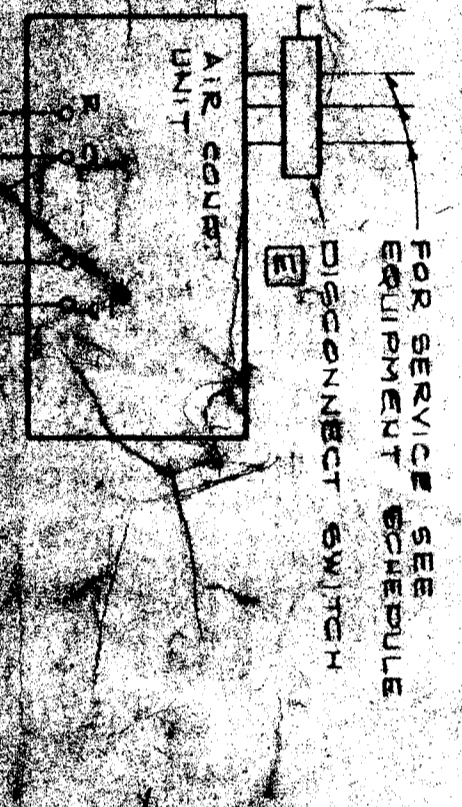
TYPICAL CLASSROOM CEILING DIFFUSER
 NO SCALE: DETAIL: 1/4"



PIPING THRU ROOF
 NO SCALE: DETAIL: 1/4"



DUCT THRU ROOF
 NO SCALE: DETAIL: 1/4"



FOR SERVICE SEE EQUIPMENT SCHEDULE
 DISCONNECT SWITCH
 AIR COND. UNIT



FOR SERVICE SEE EQUIPMENT SCHEDULE
 DISCONNECT SWITCH
 AIR COND. UNIT



FOR SERVICE SEE EQUIPMENT SCHEDULE
 DISCONNECT SWITCH
 AIR COND. UNIT