

| PANEL B1 | | | | 480 VOLTS | 3Ø 3W | 10,000 AIC |
|----------|----------|--------------|----------------|-----------|-------|------------|
| CKT NO | BKR SIZE | LOAD IN AMPS | DESCRIPTION | ØA | ØB | ØC |
| 1 | 20/3 | 12 | AC-1 (1) | 12 | 12 | 12 |
| 2 | 12 | 12 | AC-1 (2) | 12 | 12 | 12 |
| 3 | 12 | 12 | AC-1 (3) | 12 | 12 | 12 |
| 4 | 12 | 12 | AC-1 (4) | 12 | 12 | 12 |
| 5 | 12 | 12 | AC-1 (5) | 12 | 12 | 12 |
| 6 | 15/2 | 4 | 12 TRANSFORMER | 12 | 12 | 12 |
| 7 | 10 | 10 | SPARE | 10 | 10 | 10 |
| 8 | TOTAL | 74 | FEEDER (Ø) | 74 | 74 | 74 |

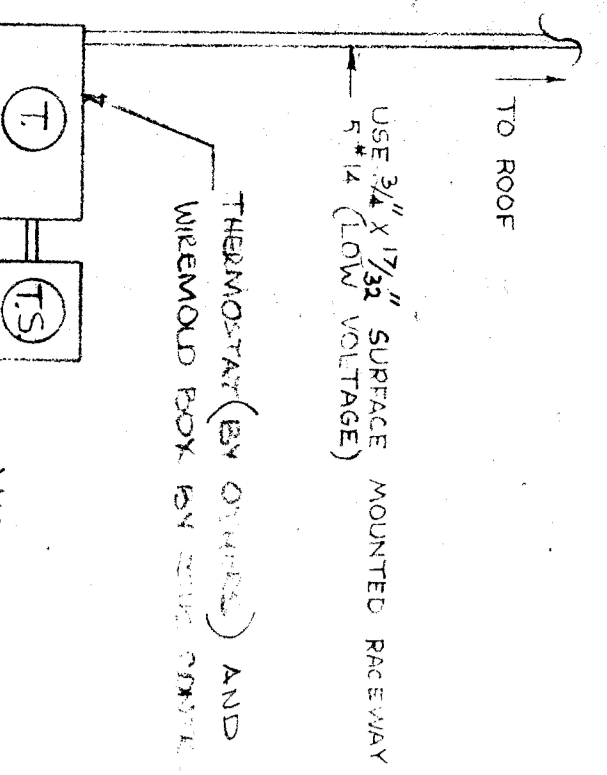
* IDENTICAL TO PANEL B1

| PANEL A1 | | | | 480 VOLTS | 3Ø 3W | 10,000 AIC |
|----------|----------|--------------|----------------|-----------|-------|------------|
| CKT NO | BKR SIZE | LOAD IN AMPS | DESCRIPTION | ØA | ØB | ØC |
| 1 | 20/3 | 12 | AC-1 (1) | 12 | 12 | 12 |
| 2 | 12 | 12 | AC-1 (2) | 12 | 12 | 12 |
| 3 | 12 | 12 | AC-1 (3) | 12 | 12 | 12 |
| 4 | 12 | 12 | AC-1 (4) | 12 | 12 | 12 |
| 5 | 12 | 12 | AC-1 (5) | 12 | 12 | 12 |
| 6 | 15/2 | 4 | 12 TRANSFORMER | 12 | 12 | 12 |
| 7 | 10 | 10 | SPARE | 10 | 10 | 10 |
| 8 | TOTAL | 56 | FEEDER (Ø) | 56 | 56 | 56 |

| PANEL MS | | | | 480 VOLTS | 3Ø 4W | 25,000 AIC |
|----------|----------|--------------|-------------|-----------|-------|------------|
| CKT NO | BKR SIZE | LOAD IN AMPS | DESCRIPTION | ØA | ØB | ØC |
| 1 | 50/3 | 314 | 314 | 314 | 314 | 314 |
| 2 | 30/3 | 62 | 58 | 62 | 62 | 62 |
| 3 | 10/3 | 74 | 70 | 74 | 74 | 74 |
| 4 | 10/3 | 141 | 141 | 141 | 141 | 141 |
| 5 | 12/2 | 120 | (120) | 120 | 120 | 120 |
| 6 | 12/2 | 120 | (120) | 120 | 120 | 120 |
| 7 | 10 | 10 | FEEDER (Ø) | 10 | 10 | 10 |
| 8 | TOTAL | 647 | 628 | 647 | 647 | 647 |

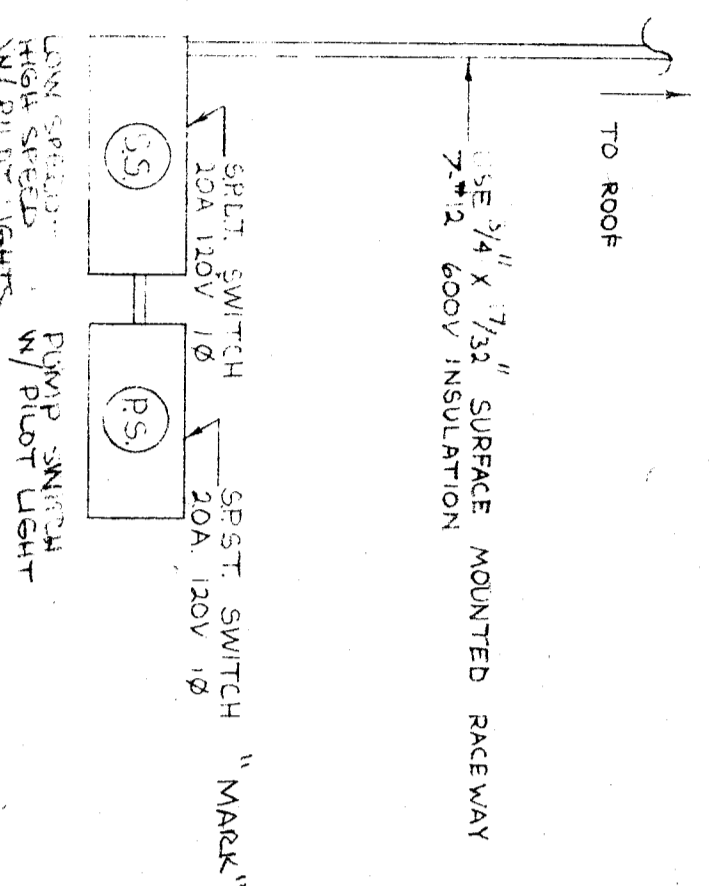
NOTE: ALL NEW PANELS ARE ON EXISTING AND WEATHER PROOF

| PANEL D1 | | | | 480 VOLTS | 3Ø 3W | 10,000 AIC |
|----------|----------|--------------|-------------|-----------|-------|------------|
| CKT NO | BKR SIZE | LOAD IN AMPS | DESCRIPTION | ØA | ØB | ØC |
| 1 | 40/3 | 25 | 25 | 25 | 25 | 25 |
| 2 | 25 | 25 | 25 | 25 | 25 | 25 |
| 3 | 25 | 25 | 25 | 25 | 25 | 25 |
| 4 | 25 | 25 | 25 | 25 | 25 | 25 |
| 5 | 25 | 25 | 25 | 25 | 25 | 25 |
| 6 | 25 | 25 | 25 | 25 | 25 | 25 |
| 7 | 25 | 25 | 25 | 25 | 25 | 25 |
| 8 | 25 | 25 | 25 | 25 | 25 | 25 |
| 9 | 20/L | 10 | 10 | 10 | 10 | 10 |
| 10 | 10 | 10 | 10 | 10 | 10 | 10 |
| 11 | 10 | 10 | 10 | 10 | 10 | 10 |
| 12 | TOTAL | 139 | 147 | 147 | 147 | 147 |



AIR CONDITIONING CONTROLS

MAN. TIME BY UNIT CROSSING. THREE WIRE, 200V, 0-12 HRS. WIREMOLD BOX IN THIS UNIT.

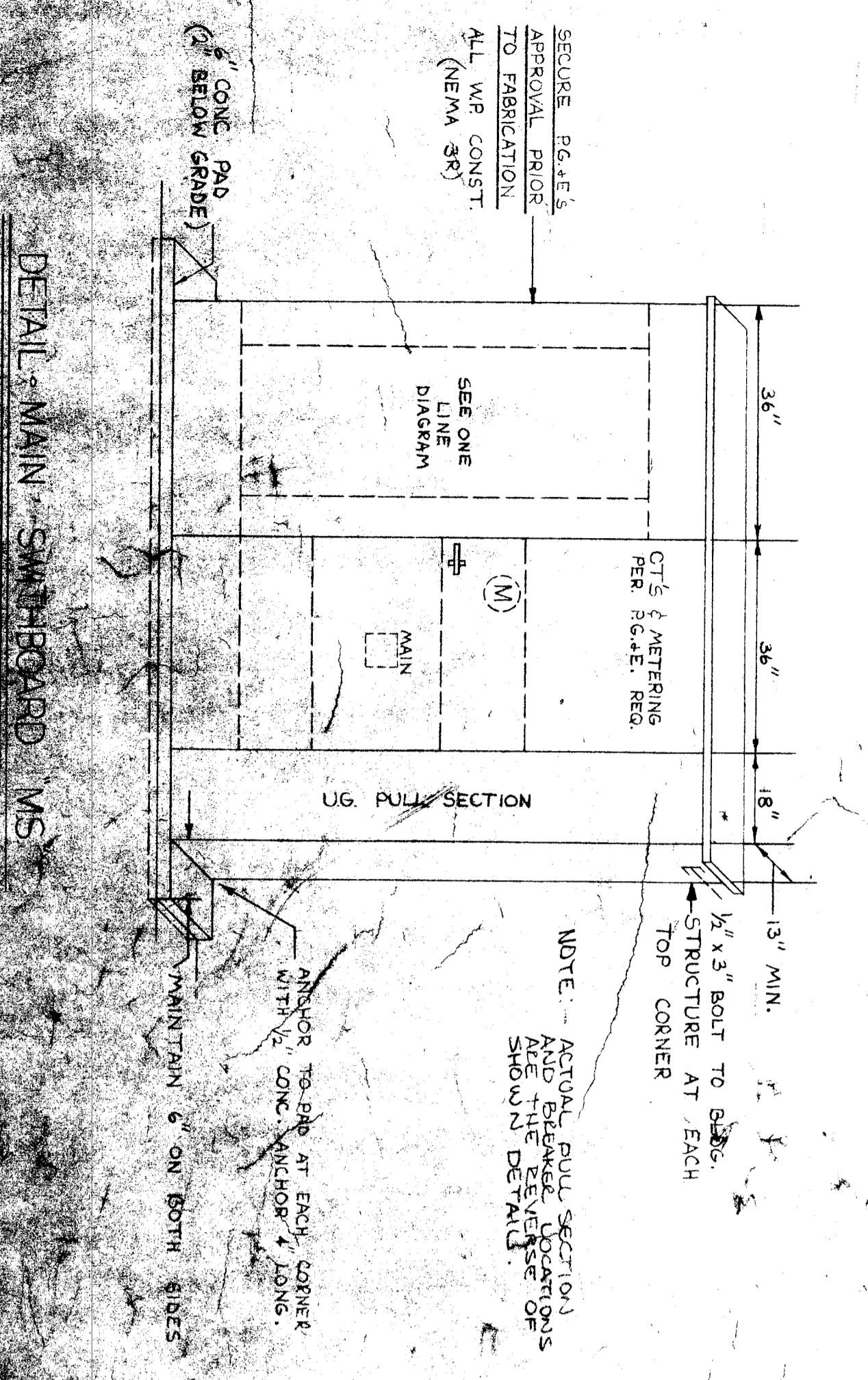


EVAPORATIVE COOLER CONTROLS

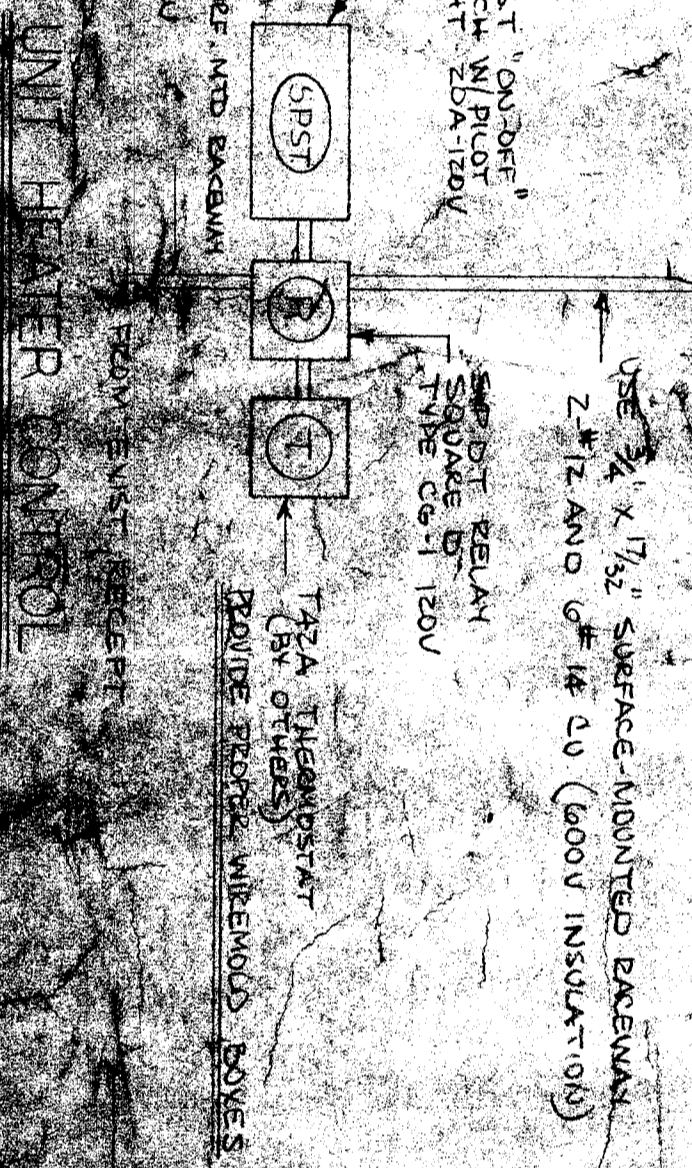
NO SCALE

| PANEL E1 | | | | 480 VOLTS | 3Ø 3W | 10,000 AIC |
|----------|----------|--------------|-------------|-----------|-------|------------|
| CKT NO | BKR SIZE | LOAD IN AMPS | DESCRIPTION | ØA | ØB | ØC |
| 1 | 50/3 | 270 | 270 | 270 | 270 | 270 |
| 2 | 50/3 | 23 | 23 | 23 | 23 | 23 |
| 3 | 20/3 | 11 | 11 | 11 | 11 | 11 |
| 4 | 12 | 2 | 2 | 2 | 2 | 2 |
| 5 | 12 | 2 | 2 | 2 | 2 | 2 |
| 6 | 12 | 2 | 2 | 2 | 2 | 2 |
| 7 | 12 | 2 | 2 | 2 | 2 | 2 |
| 8 | 12 | 2 | 2 | 2 | 2 | 2 |
| 9 | 12 | 2 | 2 | 2 | 2 | 2 |
| 10 | 10 | 10 | 10 | 10 | 10 | 10 |
| TOTALS | | 324 | 324 | 324 | 324 | 324 |

CONTROL NOTES:
1. REFER TO ALL UNIT MANUFACTURER'S SUGGESTION ON EXTERNAL PROTECTION (FUSED DISCONNECT OR BREAKER)
2. REFER TO MECH DIVS SMT. M-3
FED. CORROSION CONNECTIONS OF ALL CONTROLS.



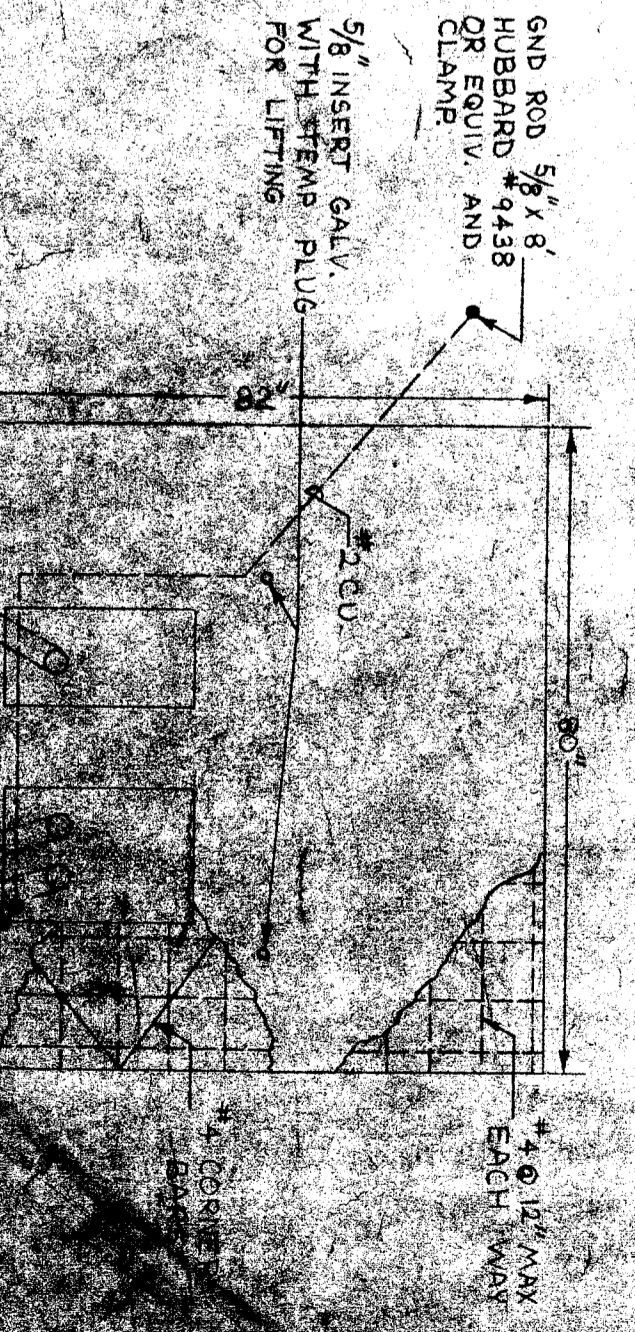
DETAIL - MAIN WIREBOARD MS



UNIT HEATER CONTROL

| TYPE | WATTS | LAMP MANUFACTURER | CATALOG NUMBER | QUANTITY | NOTE |
|------|-------|-------------------|----------------|----------|--------|
| A | 400 | 5-40W | REPUTABLE | 1 | Ø 1/2" |
| B | 100 | 7-40W | REPUTABLE | 1 | Ø 1/2" |
| C | 200 | 4-40W | REPUTABLE | 1 | Ø 1/2" |
| D | 100 | 2-40W | REPUTABLE | 1 | Ø 1/2" |
| E | 450 | 400W | REPUTABLE | 1 | Ø 1/2" |
| F | 300 | 150W | REPUTABLE | 1 | Ø 1/2" |

FIXTURE SCHEDULE



GRID ROD

1/2" HUBBARD CAL. WITH STEEL PULVE FOR LIFTING