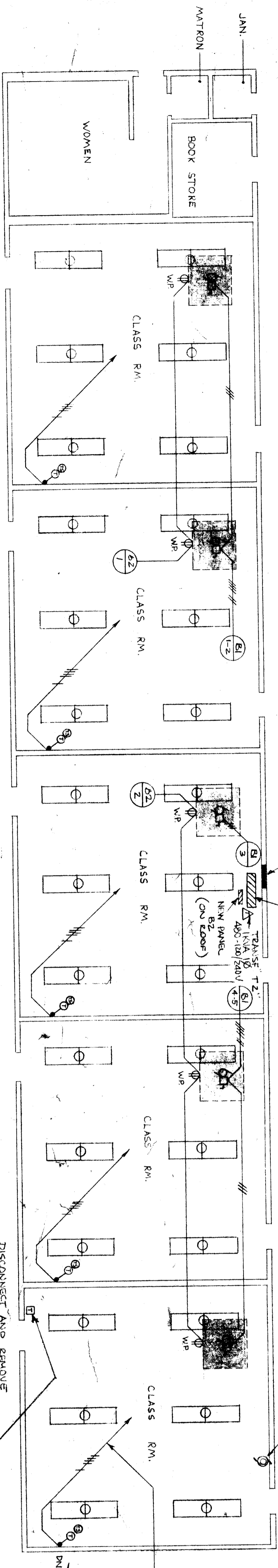
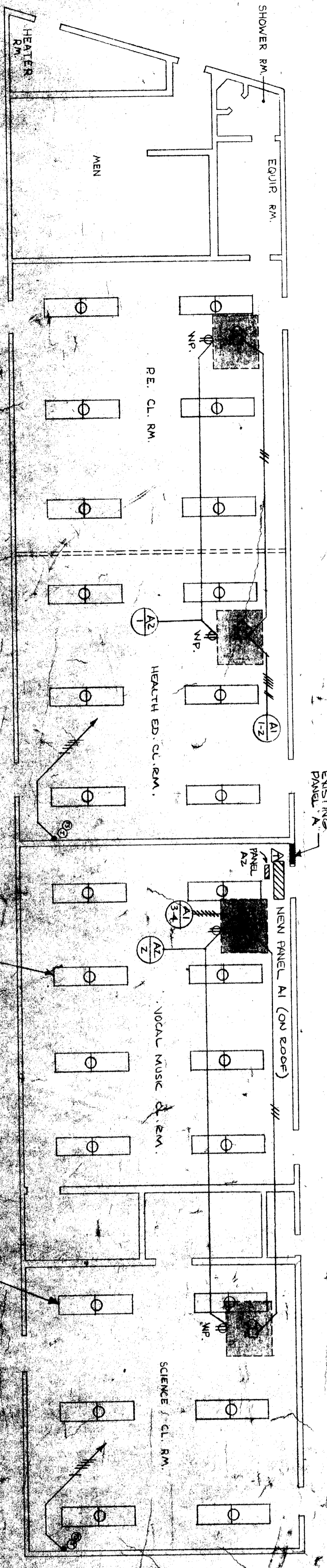


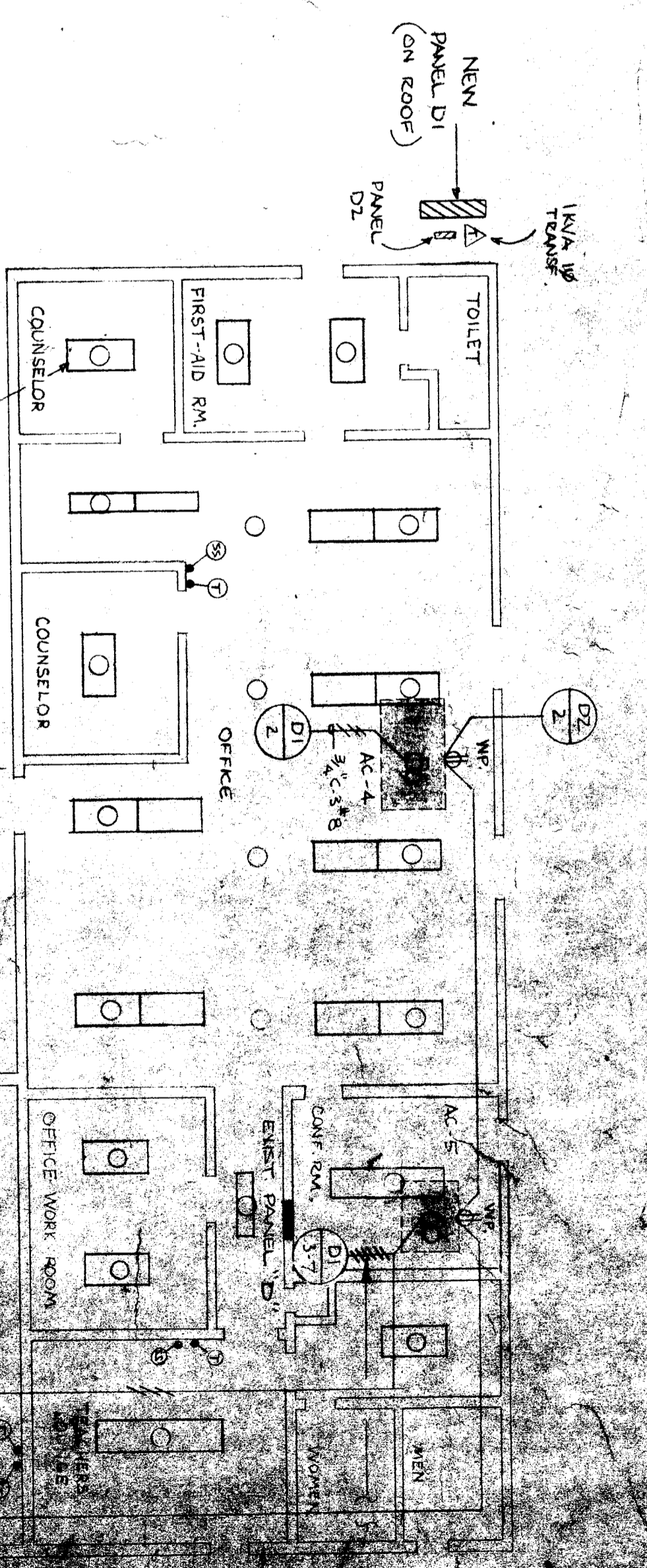
BUILDING "G"



BUILDING "F"



BUILDING "E"



BUILDING "C"

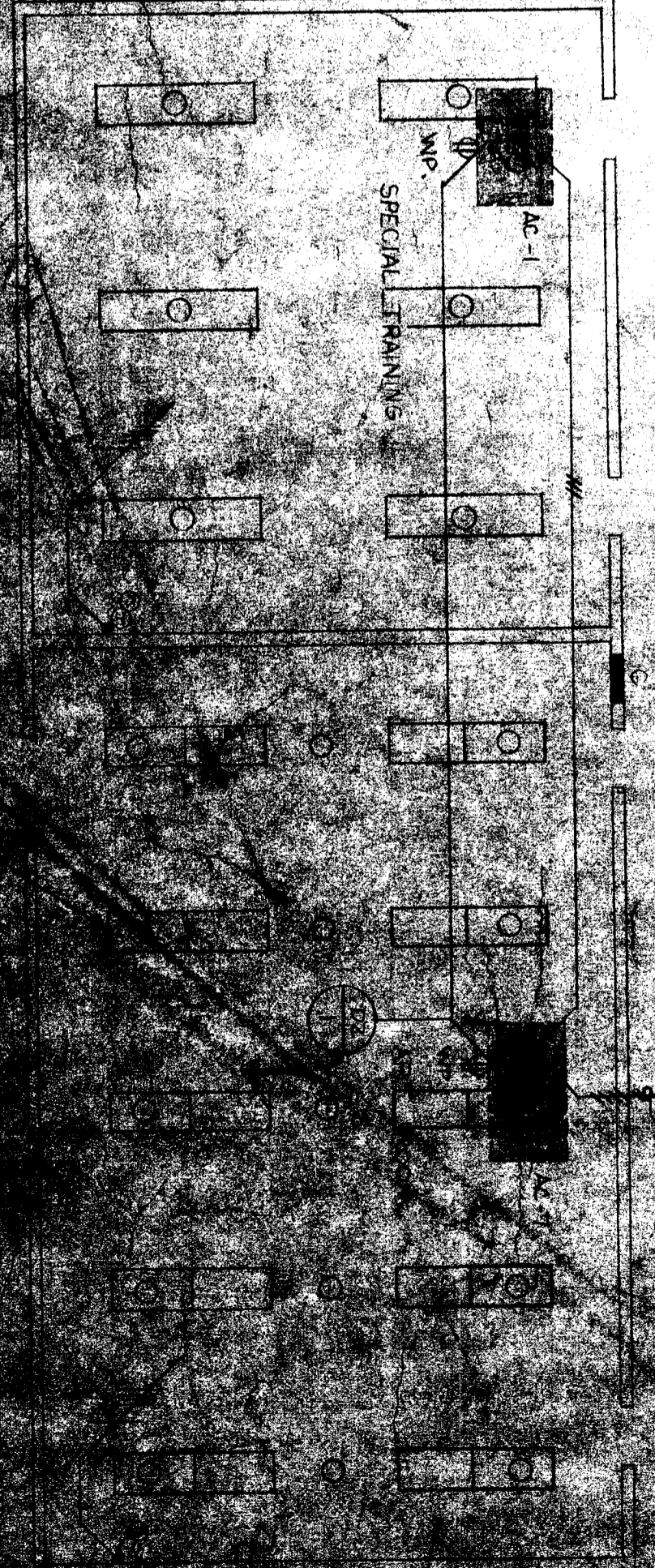
REMOVE 500W AND COM. DIM. FIXTURES (2) AND 150W-GLOBE AND HANDED FIXTURE (2) WITH 2x8 FLOURESCENT FIXTURES (2) FUTURE TYPE "A", WITH 2'x4 FLOURESCENT FIXTURES (3) FUTURE TYPE "C", AND WITH 1'x4 FLOURESCENT FIXTURES (2) FUTURE TYPE "B", USE WIREMOLD COVER PLATES (B) AND TIE OFF WIRES WHERE BEYOND DULK.

DISCONNECT AND REMOVE THE OFF CONDUITS AND INSTALL WIREMOLD COVER PLATE (TYPICAL)

REMOVE 400W 3W PANEL ON E200F OUTDOOR TYPE WITH 1/4" DIA 1/8" THICK TO SERVE RECEPTACLES AT EACH A/C UNIT (TYPICAL FOR BUDGET 8505FMB03)

3/4" C-5" 4" TO A/C UNIT (TYPICAL) SEE MECH. SHIT. M. 3 FOR CONTROL DIAGRAM THERMOSTATS CONTROLS (TYPICAL) SEE SHIT E-4 FOR DETAIL

DISCONNECT AND REMOVE THE OFF CONDUITS AND INSTALL WIREMOLD COVER PLATE (TYPICAL)



DESIGNED BY TERRY A. ROBERTS, ARCHITECT
 ENGINEERING BY TERRY A. ROBERTS, ARCHITECT
 1000 1/2 ST. N. S.W. ALBUQUERQUE, N.M. 87102