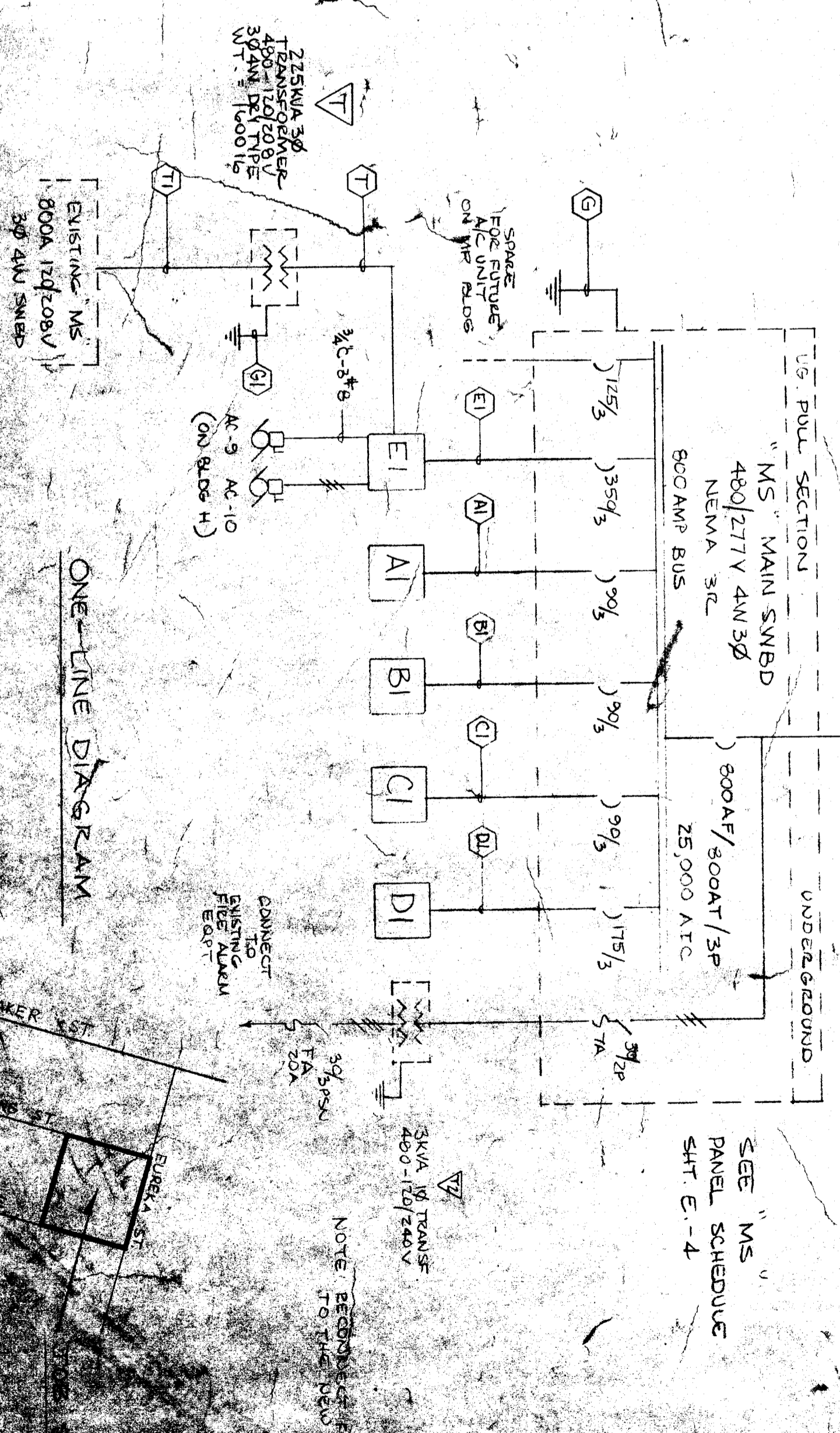
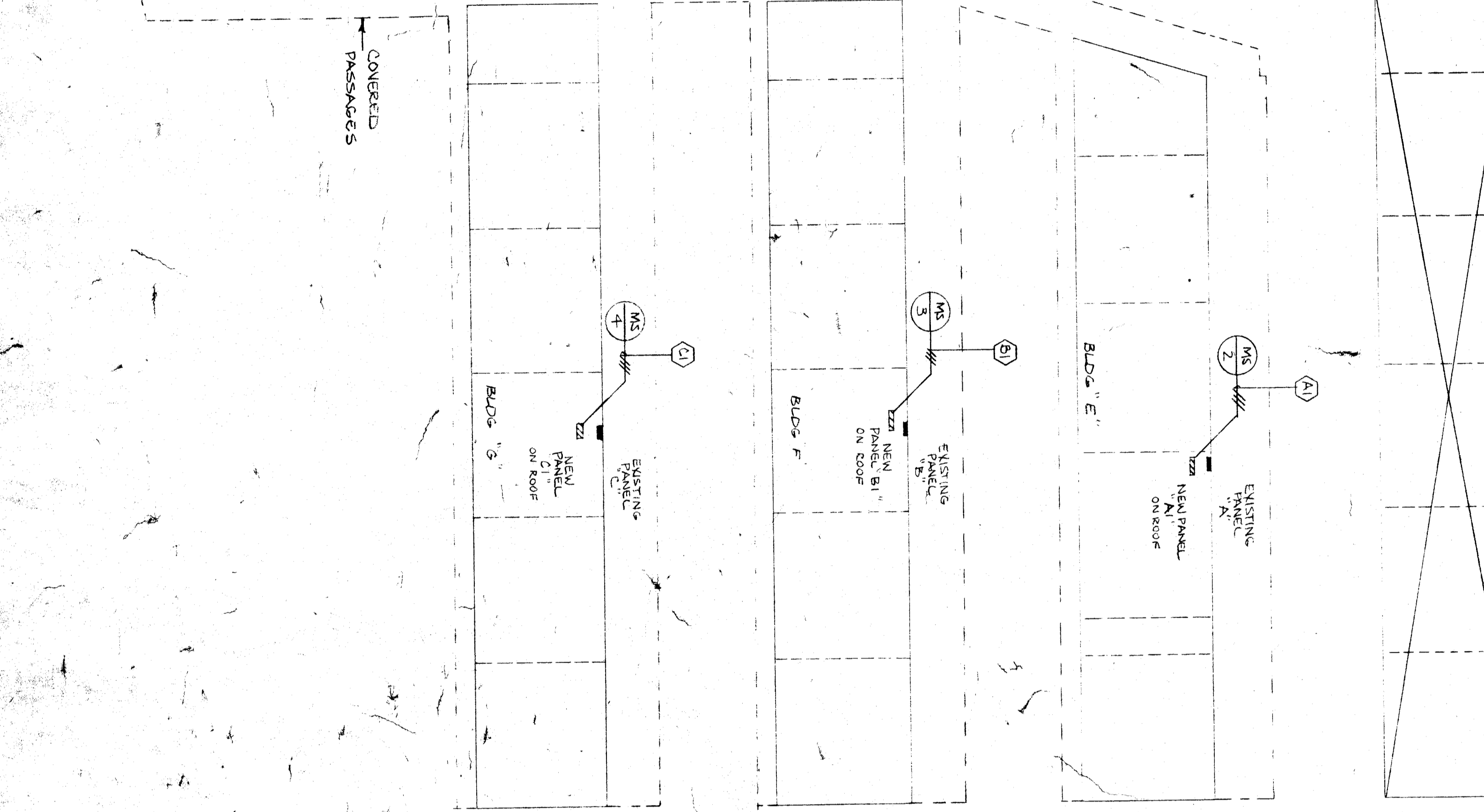
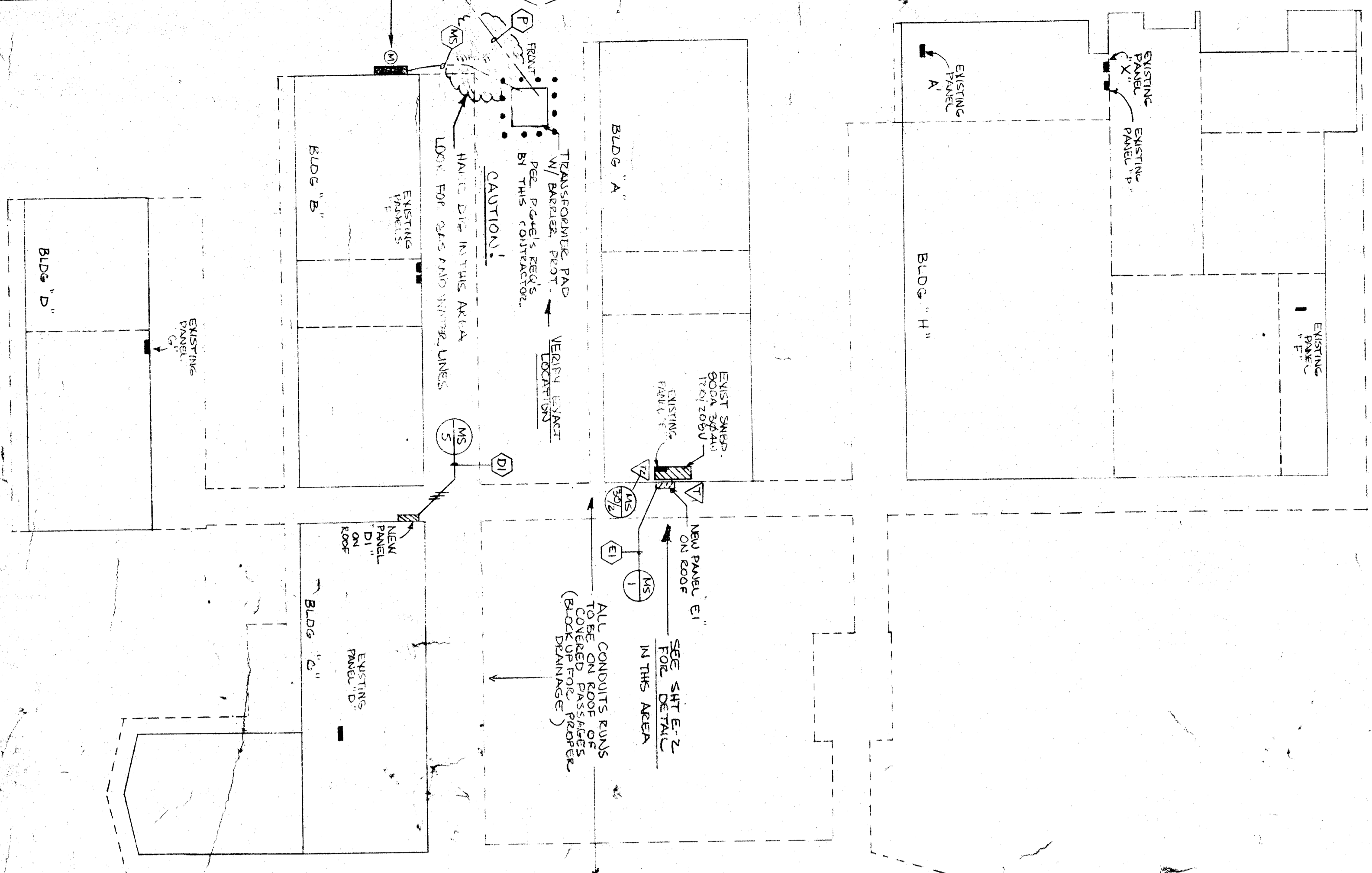


BEALE

AVENUE



KEY	DESCRIPTION
P	1-4" C. O. ABS (WIRE BY POWER CO.)
MS	2-4" C.D. ABS (WIRE BY POWER CO.)
G	1-3/4" C. WITH 1-210 CU THIN
T	1-3" C. WITH 3-350MM AL THIN
TI	2-3" C. WITH 4-350MM AL THIN EACH
AI	1-1/4" C. WITH 3-2AL THIN
EI	1-1/2" C. WITH 3-10AL THIN
DI	1-3" C. WITH 3-300MM AL THIN

SYMBOL	DESCRIPTION
(P)	1-4" C. O. ABS
(MS)	2-4" C.D. ABS
(G)	1-3/4" C. WITH 1-210 CU THIN
(T)	1-3" C. WITH 3-350MM AL THIN
(TI)	2-3" C. WITH 4-350MM AL THIN EACH
(AI)	1-1/4" C. WITH 3-2AL THIN
(EI)	1-1/2" C. WITH 3-10AL THIN
(DI)	1-3" C. WITH 3-300MM AL THIN

CODES, RULES AND REGULATIONS

ALL ELECTRICAL WORK SHALL BE DONE IN ACCORDANCE WITH THE NATIONAL ELECTRICAL CODE (NEC) AS AMENDED BY THE NATIONAL FIRE PROTECTION ASSOCIATION (NFPA) AND THE NATIONAL BOARD OF FIRE UNDERWRITERS (NFPA 70-1996).

ALL ELECTRICAL WORK SHALL BE DONE IN ACCORDANCE WITH THE CITY OF CHICAGO ORDINANCES AND THE CITY OF CHICAGO DEPARTMENT OF PUBLIC WORKS (CPW) SPECIFICATIONS.

ALL ELECTRICAL WORK SHALL BE DONE IN ACCORDANCE WITH THE ILLINOIS ELECTRICAL CONTRACTORS ASSOCIATION (IECA) SPECIFICATIONS.

ALL ELECTRICAL WORK SHALL BE DONE IN ACCORDANCE WITH THE ILLINOIS ELECTRICAL CONTRACTORS ASSOCIATION (IECA) SPECIFICATIONS.

SEE MS PANEL SCHEDULE SHEET E-4