

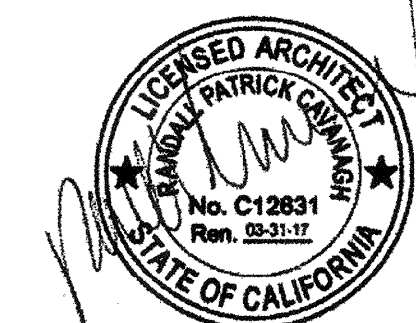
MODULAR MANUFACTURER PROPRIETARY STATEMENT  
 THESE DRAWINGS AND THE MATERIAL CONTAINED THEREIN ARE THE PROPERTY OF AMERICAN MODULAR SYSTEMS, INC. (AMS) AND SHALL NOT BE REPRODUCED, COPIED OR OTHERWISE DISPOSED OF DIRECTLY OR INDIRECTLY AND SHALL NOT BE USED IN WHOLE OR IN PART TO ASSIST IN THE MAKING OF OR FOR THE PURPOSE OF FURNISHING ANY INFORMATION FOR THE MAKING OF DRAWINGS, PRINTS, APPARATUS OR PARTS THEREOF WITHOUT THE FULL KNOWLEDGE AND WRITTEN CONSENT OF AMS. ALL PATENTABLE MATERIAL CONTAINED HEREIN AND ORIGINATING WITH AMS SHALL BE THE SOLE PROPERTY OF AMS.

PRE-CHECKED SET NAME  
**24' x 40' THRU 120' x 40'**  
**2:12 PITCHED ROOF**

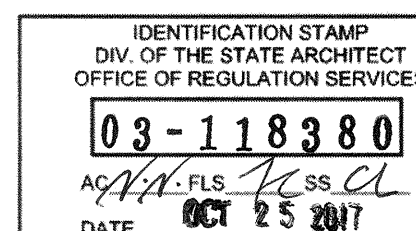
SITE SPECIFIC PROJECT NAME

SHEET TITLE  
**PLUMBING ISOMETRICS**

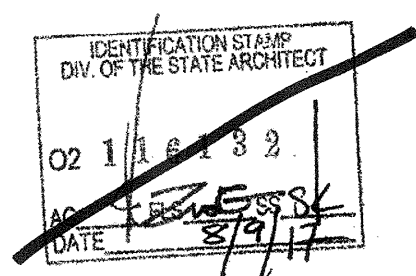
MANUFACTURER PROFESSIONAL OF RECORD ON PC



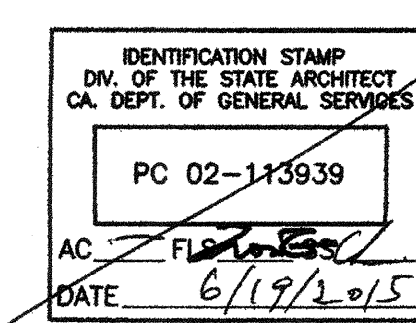
AGENCY TRACKING NO. 63321-241  
 FILE NO. 15-6



PROJECT SPECIFIC STATE AGENCY APPROVAL



ORIGINAL PC STATE AGENCY APPROVAL

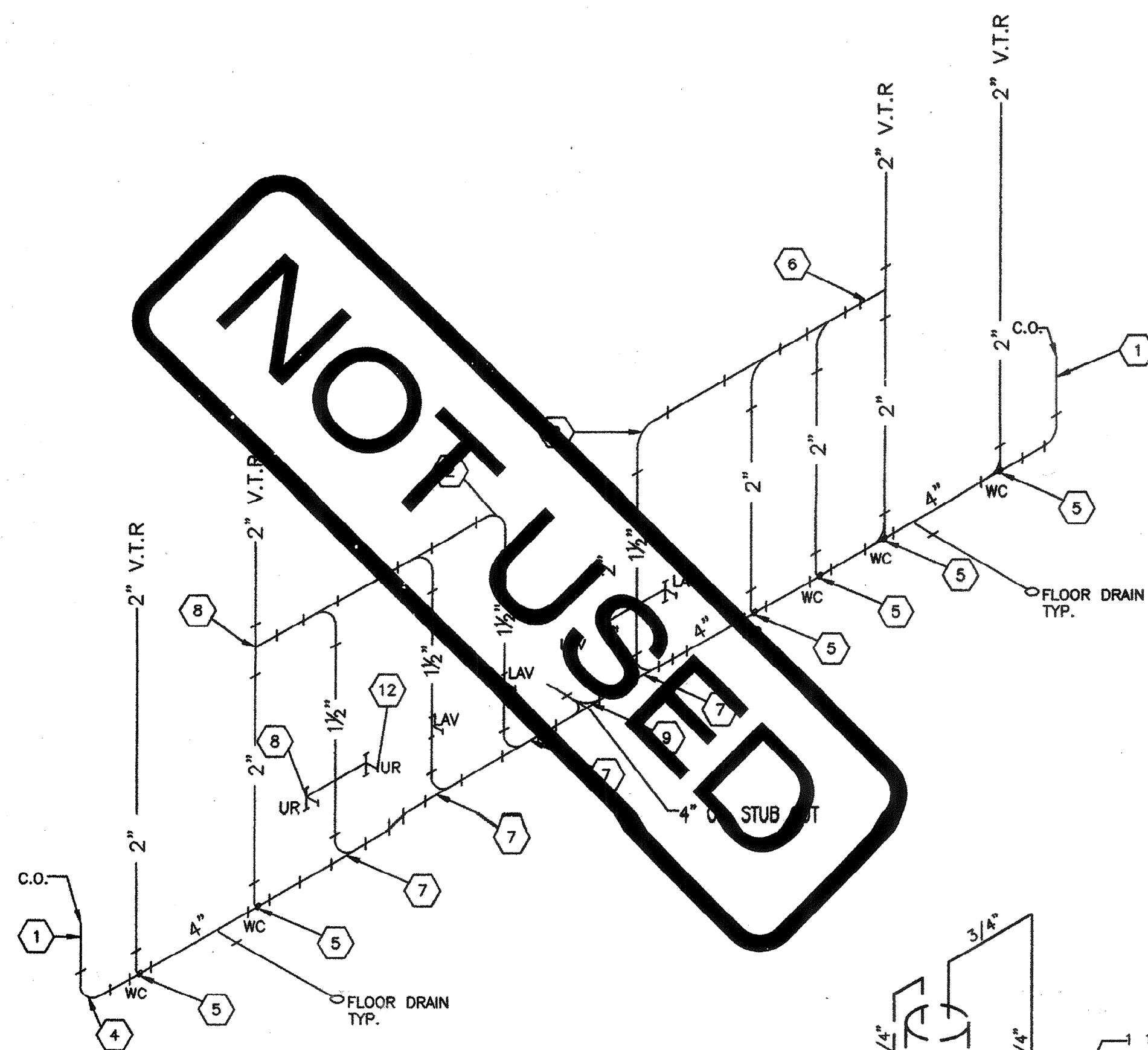


PRE-CHECK (PC) DOCUMENT - CODE: 2013 CBC  
 A SEPARATE PROJECT APPLICATION FOR CONSTRUCTION IS REQUIRED

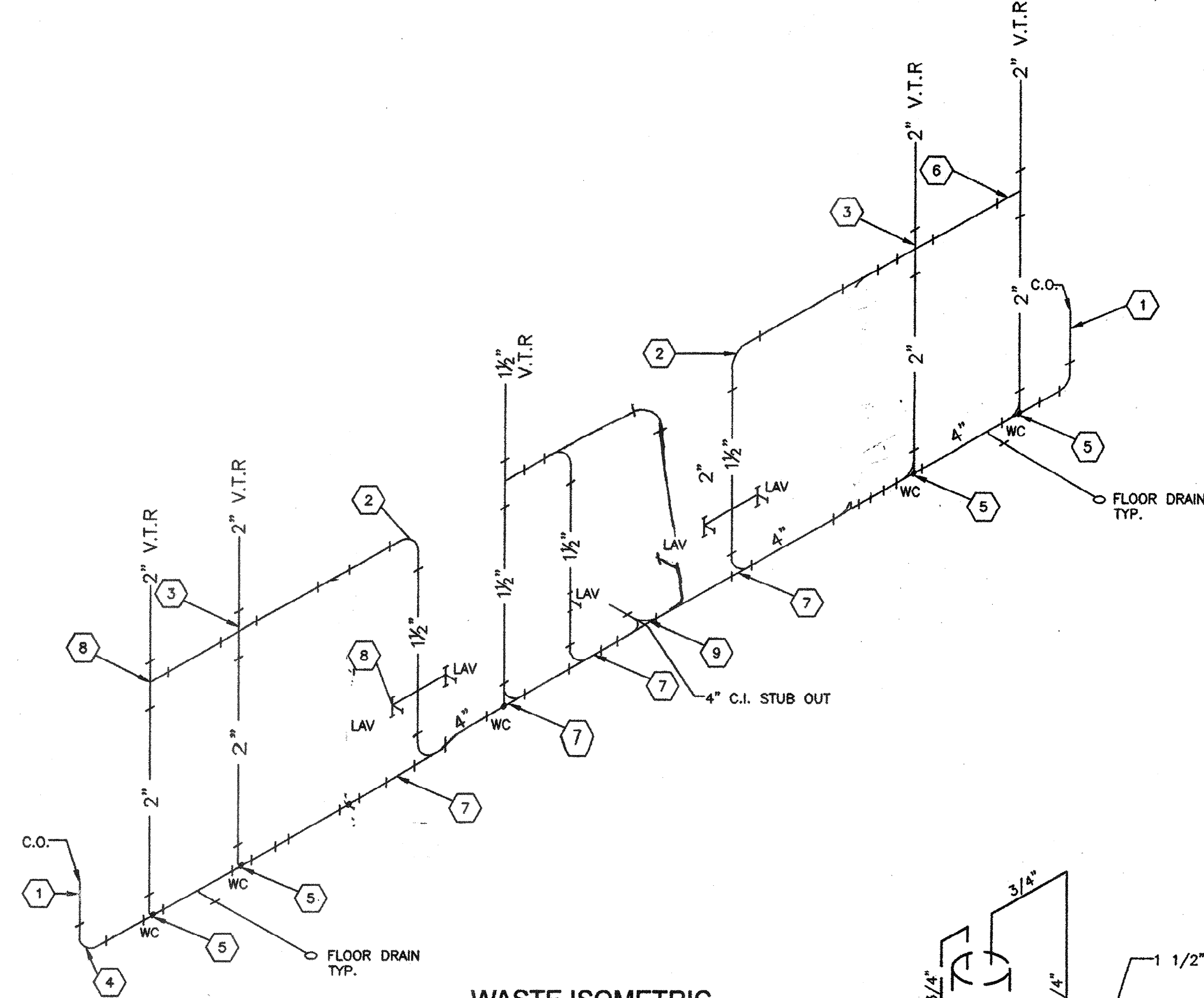
REVISIONS


DRAWN BY: \_\_\_\_\_  
 SCALE: AS NOTED  
 DATE: \_\_\_\_\_

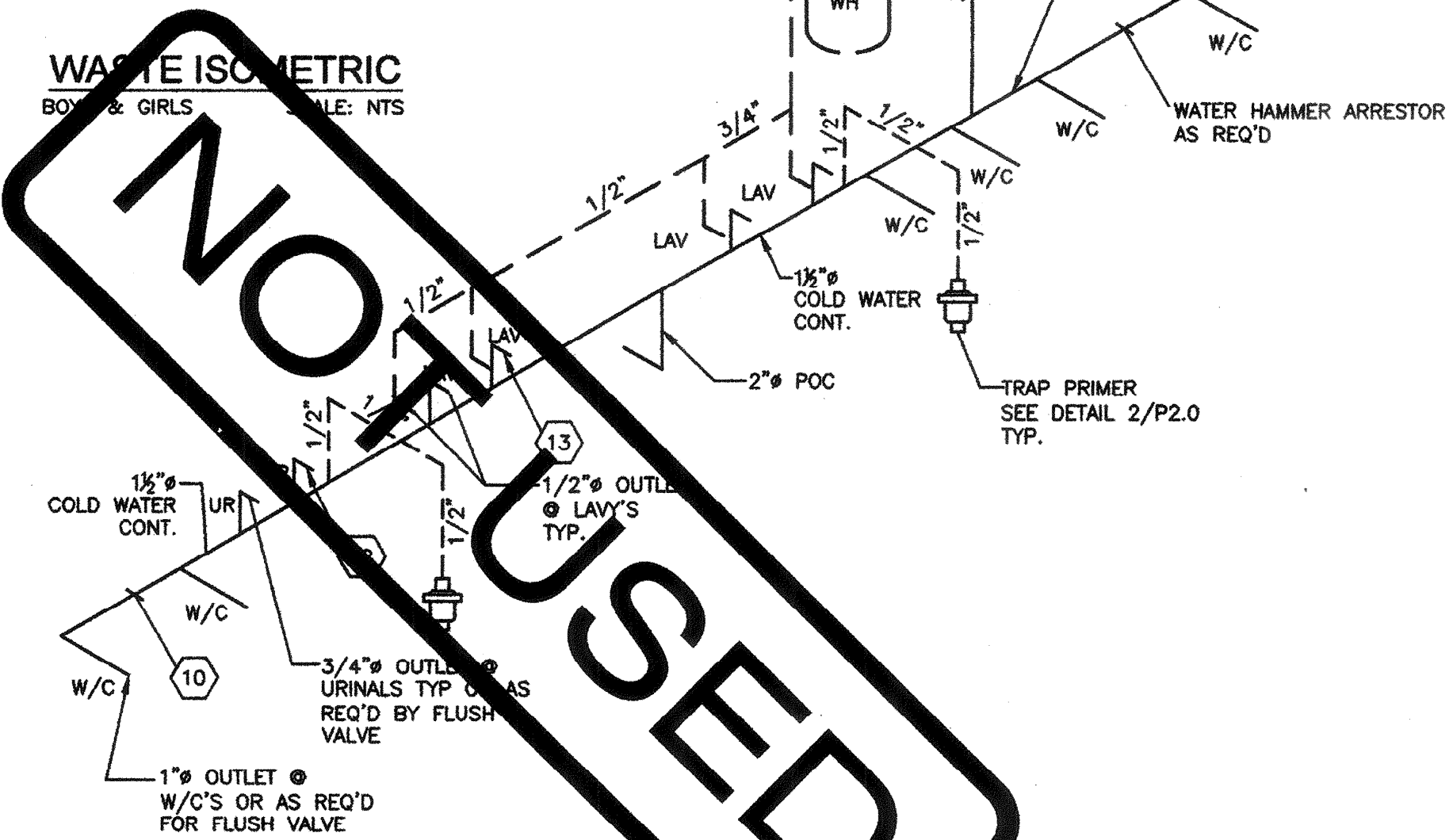
SHEET NUMBER  
**P3.0**



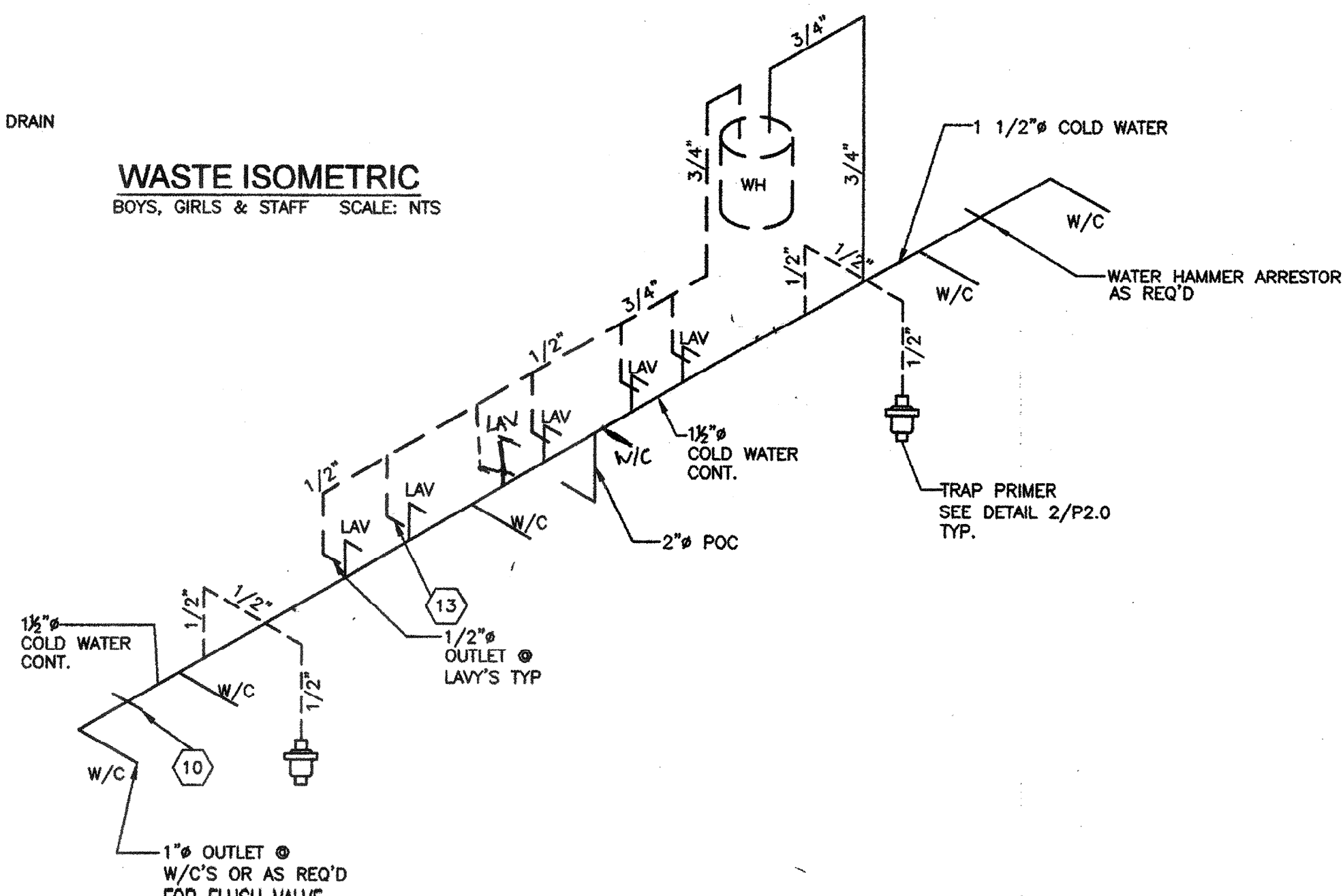
**WASTE ISOMETRIC**  
 BOYS & GIRLS SCALE: NTS



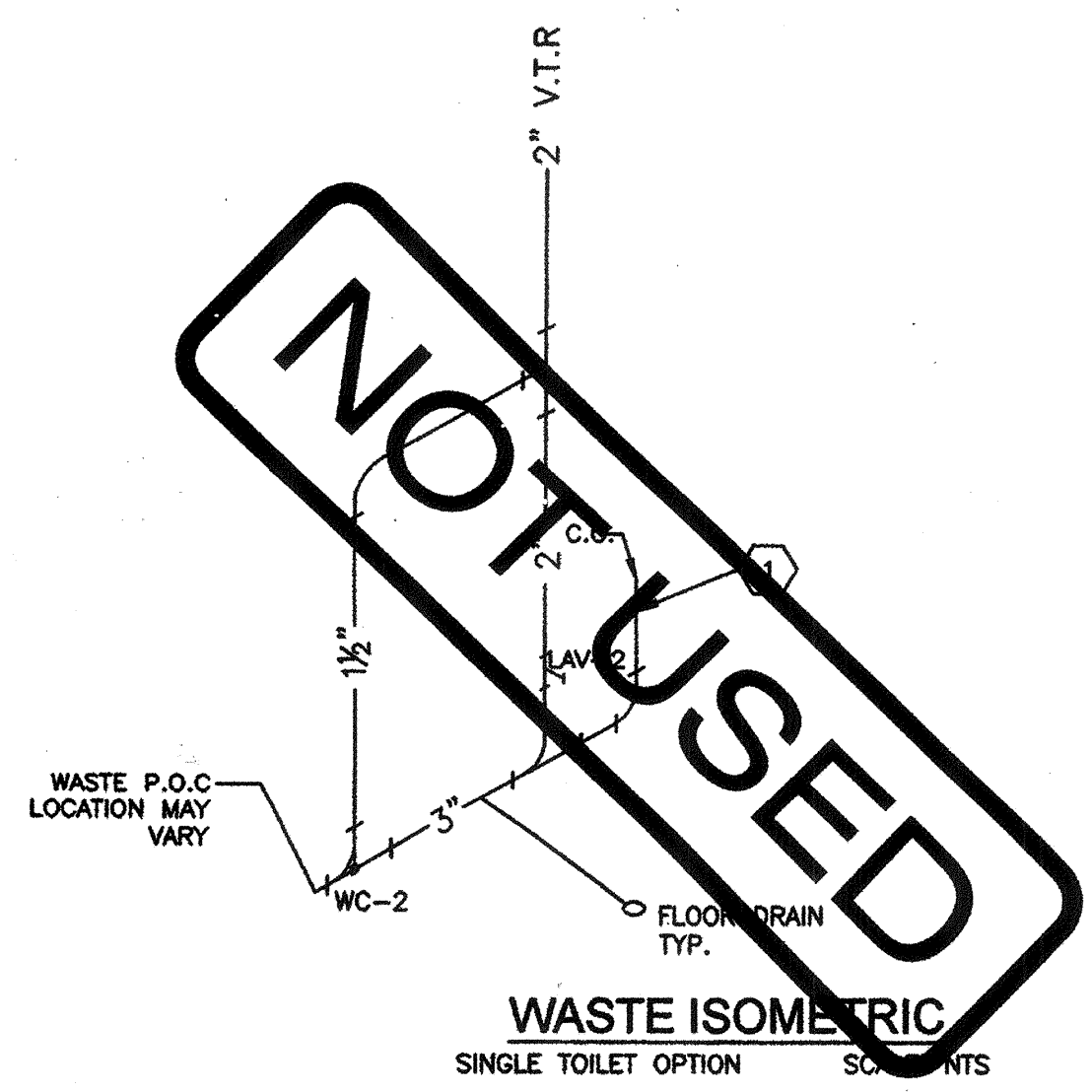
**WASTE ISOMETRIC**  
 BOYS, GIRLS & STAFF SCALE: NTS



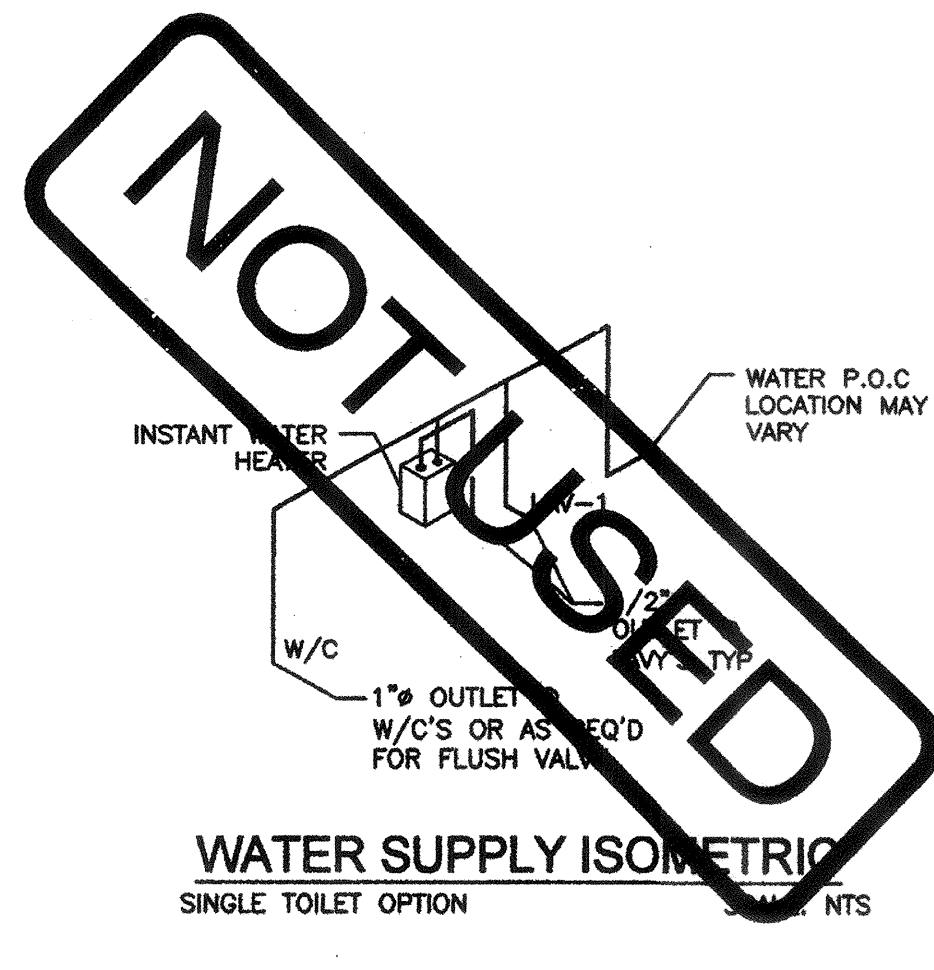
**WATER SUPPLY ISOMETRIC**  
 BOYS & GIRLS SCALE: NTS



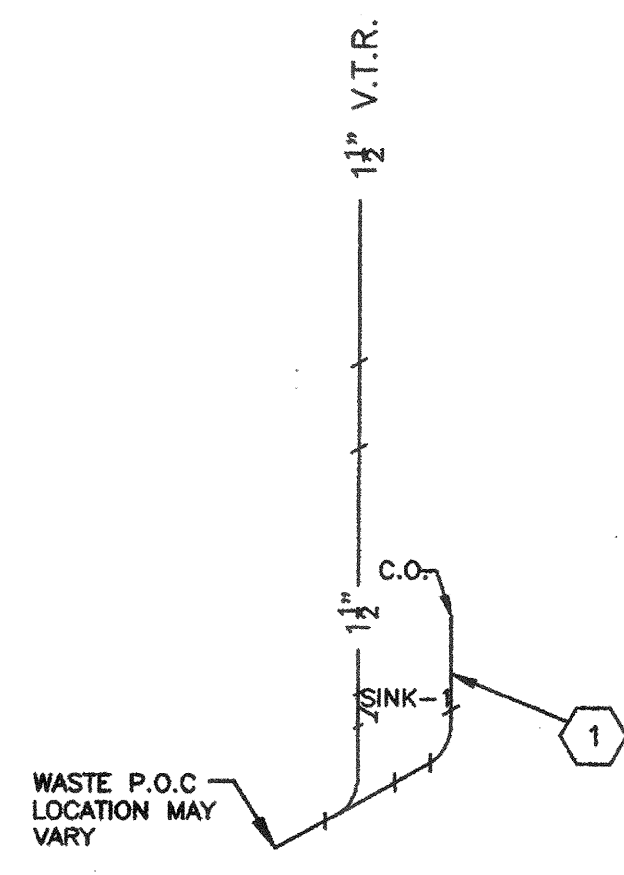
**WATER SUPPLY ISOMETRIC**  
 BOYS, GIRLS & STAFF SCALE: NTS



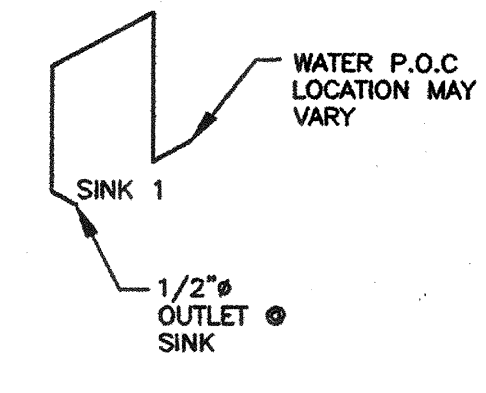
**WASTE ISOMETRIC**  
 SINGLE TOILET OPTION SCALE: NTS



**WATER SUPPLY ISOMETRIC**  
 SINGLE TOILET OPTION SCALE: NTS



**WASTE ISOMETRIC**  
 CLASSROOM SINK OPTION SCALE: NTS



**WATER SUPPLY ISOMETRIC**  
 CLASSROOM SINK OPTION SCALE: NTS

**KEY NOTES**

- 1 4" CLEAN OUT
- 2 VENT 90
- 3 VENT CROSS
- 4 4" QUARTER BEND
- 5 SMITH#0600 CARRIER
- 6 2" SANITARY TAP TEE
- 7 4x4x2 COMBINATION WYE 1/8 BEND
- 8 2x2x1 1/2 SANITARY TEE
- 9 4" DOUBLE COMBINATION
- 10 WATER HAMMER ARRESTOR
- 11 1" CW STUB AT WATER CLOSETS
- 12 3/4" CW STUB AT URINALS
- 13 1/2" CW STUB AT LAVATORIES

NOT USED

NOT USED

NOT USED

NOT USED