

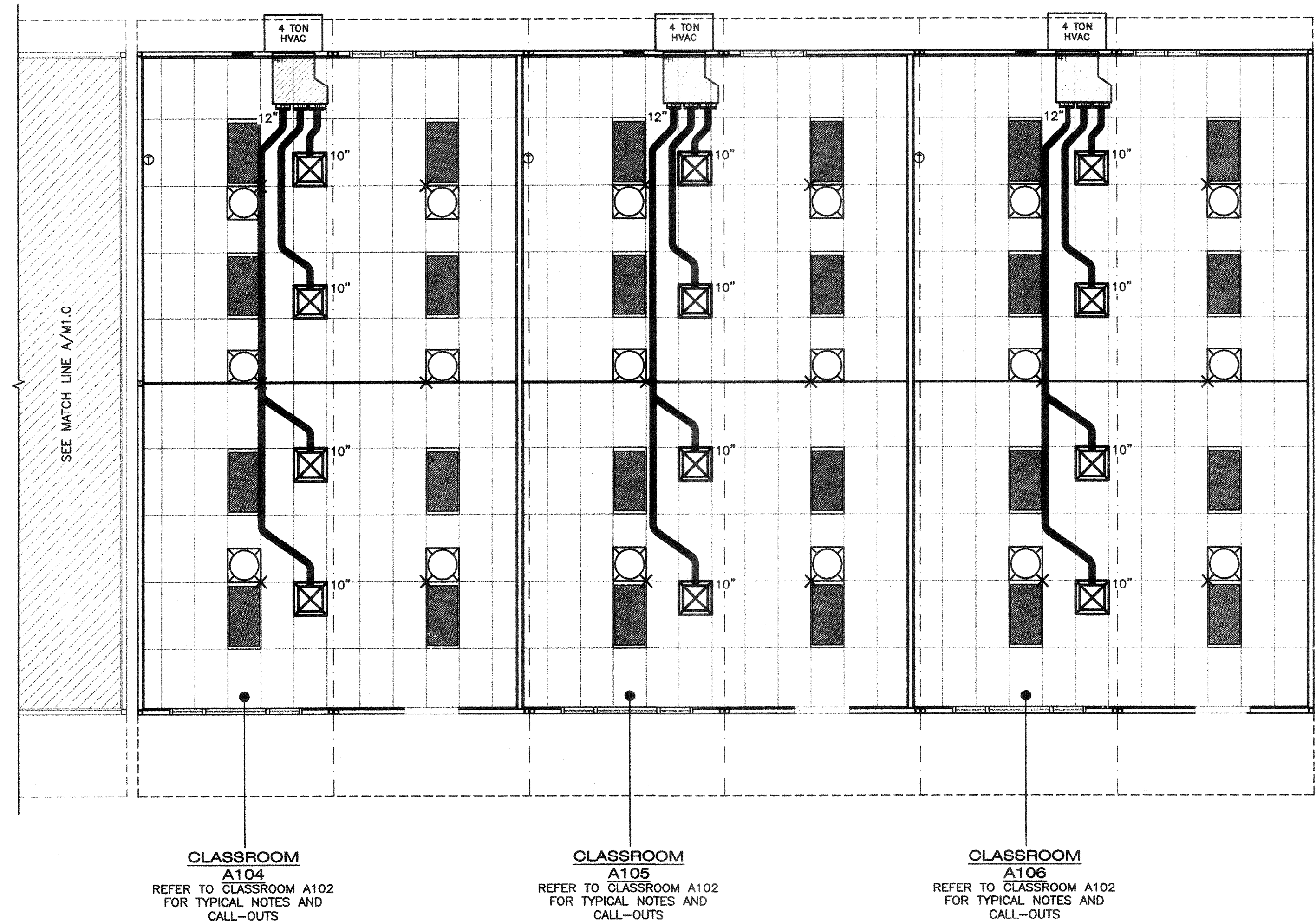
MARK	DESCRIPTION	CFM	WATTS	S.P.	VOLT/PH	
EF 1	EXHAUST FAN	140	1050	.10"	115-1φ	NUTONE 672R CEILING MOUNTED 180W INPUT 23 LBS (OR EQUAL)
EF 2	EXHAUST FAN	200	1080	.10"	115-1φ	—

- NOTES:
- VENT EXHAUST FAN THROUGH ROOF.
  - FANS MUST WEIGH LESS THAN 75 LBS.
  - LIGHTING FIXTURE MAY BE INSTALLED ROTATED 90° FROM SHOWN TO MATCH T-GRID LAYOUT.

RESTROOM A101  
CLASSROOM A102  
CLASSROOM A103  
REFER TO CLASSROOM A102 FOR TYPICAL NOTES AND CALL-OUTS

60' x 40' CLASSROOM BUILDING REFLECTED CEILING/MECHANICAL PLAN

SCALE: 3/16" = 1'-0"



CLASSROOM A104  
REFER TO CLASSROOM A102 FOR TYPICAL NOTES AND CALL-OUTS  
CLASSROOM A105  
REFER TO CLASSROOM A102 FOR TYPICAL NOTES AND CALL-OUTS  
CLASSROOM A106  
REFER TO CLASSROOM A102 FOR TYPICAL NOTES AND CALL-OUTS

72' x 40' CLASSROOM REFLECTED CEILING/MECHANICAL PLAN

SCALE: 3/16" = 1'-0"

- MAIN RUNNER TYP.
- CROSS RUNNER TYP.
- INTERIOR LIGHT FIXTURE REFER TO SHEET SHEET E1.0 FOR SPEC'S
- CEILING HEIGHT @ 8'-6" VAULTED TO 10'-0"
- SPLY WIRE SEE 3/M1.4 FOR DETAILS
- FIXED CEILING END
- FREE CEILING END
- CENTER SECTION THAT CROSSES MODULE LINE TO BE FIELD INSTALLED
- WALL MOUNTED HVAC
- THERMOSTAT
- CONCEALED SUPPLY AIR DUCT ABOVE T-BAR CEILING
- TYPICAL 4-WAY SUPPLY AIR REGISTER LOCATION AND SIZE MAY VARY PER CEILING LAYOUT AND BUILDING SIZE
- FLEX DUCT - NOMINAL 10" MIN. (MAY VARY)
- RETURN AIR AS PART OF UNIT
- SOLA-TUBE SKY LIGHTS
- GYPSON BOARD CEILING PER DETAIL 8/M1.6, 8'-6" HIGHER

SHEET NOTES

- WHERE TWO OR MORE HVAC UNITS SERVE A COMMON SPACE, UNITS SHALL BE EQUIPPED WITH A DUCT SMOKE DETECTOR FOR AUTO SHUTDOWN. INTERCONNECT WITH FIRE ALARM SYSTEM
- AUTOMATIC SHUT-OFF IS NOT REQUIRED WHEN ALL OCCUPIED ROOMS SERVED BY THE AIR HANDLING EQUIPMENT HAVE DIRECT ACCESS TO THE EXTERIOR AND THE TRAVEL DISTANCE DOES NOT EXCEEDS 100 FT. PER CMC 609 EXCEPTION #2
- LIGHTING FIXTURE MAY BE INSTALLED ROTATED 90° FROM SHOWN TO MATCH T-GRID.

MEP COMPONENT ANCHORAGE NOTE

ALL MECHANICAL, PLUMBING, AND ELECTRICAL COMPONENTS SHALL BE ANCHORED AND INSTALLED PER THE DETAILS ON THE DSA APPROVED CONSTRUCTION DOCUMENTS. WHERE NO DETAIL IS INDICATED, THE FOLLOWING COMPONENTS SHALL BE ANCHORED OR BRACED TO MEET THE FORCE AND DISPLACEMENT REQUIREMENTS PRESCRIBED IN THE 2013 CBC, SECTIONS 161A.1.18 THROUGH 161A.1.26 AND ASCE 7-10 CHAPTER 13, 26, AND 30.

- ALL PERMANENT EQUIPMENT AND COMPONENTS.
- TEMPORARY OR MOVABLE EQUIPMENT THAT IS PERMANENTLY ATTACHED (E.G. HARD WIRED) TO THE BUILDING UTILITY SERVICES SUCH AS ELECTRICITY, GAS OR WATER.
- MOVABLE EQUIPMENT WHICH IS STATIONED IN ONE PLACE FOR MORE THAN 8 HOURS AND HEAVIER THAN 400 POUNDS ARE REQUIRED TO BE ANCHORED WITH TEMPORARY ATTACHMENTS.

THE FOLLOWING MECHANICAL AND ELECTRICAL COMPONENTS SHALL BE POSITIVELY ATTACHED TO THE STRUCTURE, BUT THE ATTACHMENT NEED NOT BE DETAILED ON THE PLANS. THESE COMPONENTS SHALL HAVE FLEXIBLE CONNECTIONS PROVIDED BETWEEN THE COMPONENT AND ASSOCIATED DUCTWORK, PIPING, AND CONDUIT.

- COMPONENTS WEIGHING LESS THAN 400 POUNDS AND THAT HAVE A CENTER OF MASS LOCATED 4 FEET OR LESS ABOVE THE ADJACENT FLOOR OR ROOF LEVEL THAT DIRECTLY SUPPORT THE COMPONENT.
- COMPONENTS WEIGHING LESS THAN 20 POUNDS, OR IN THE CASE OF DISTRIBUTED SYSTEMS, LESS THAN 5 POUNDS PER FOOT, WHICH ARE SUSPENDED FROM A ROOF OR FLOOR OR HUNG FROM A WALL.

FOR THOSE ELEMENTS THAT DO NOT REQUIRE DETAILS ON THE APPROVED DRAWINGS, THE INSTALLATION SHALL BE SUBJECT TO THE APPROVAL OF THE STRUCTURAL ENGINEER OF RECORD AND THE DSA DISTRICT STRUCTURAL ENGINEER. THE PROJECT INSPECTOR WILL VERIFY THAT ALL COMPONENTS AND EQUIPMENT HAVE BEEN ANCHORED IN ACCORDANCE WITH ABOVE REQUIREMENTS.

PIPING, DUCTWORK, AND ELECTRICAL DISTRIBUTION SYSTEM BRACING NOTE

PIPING, DUCTWORK, AND ELECTRICAL DISTRIBUTION SYSTEMS SHALL BE BRACED TO COMPLY WITH THE FORCES AND DISPLACEMENTS PRESCRIBED IN ASCE 7-10 SECTION 13.3 AS DEFINED IN ASCE 7-10 SECTION 13.6.8, 13.6.7, 13.6.5.6, AND 2013 CBC, SECTIONS 1616A.1.23, 1616A.1.24, 1616A.1.25 AND 1616A.1.26.

THE BRACING AND ATTACHMENTS TO THE STRUCTURE SHALL BE DETAILED ON THE APPROVED DRAWINGS OR THEY SHALL COMPLY WITH ONE OF THE OSHPD PRE-APPROVALS (OPM#).

COPIES OF THE BRACING SYSTEM INSTALLATION GUIDE OR MANUAL SHALL BE AVAILABLE ON THE JOB SITE PRIOR TO THE START OF HANGING AND BRACING OF THE PIPE, DUCTWORK, AND ELECTRICAL DISTRIBUTION SYSTEMS.



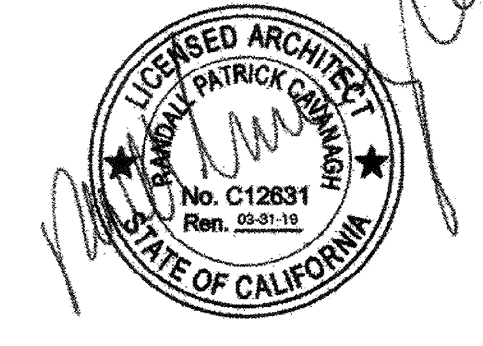
MODULAR MANUFACTURER PROPRIETARY STATEMENT  
THESE DRAWINGS AND THE MATERIAL CONTAINED THEREIN ARE THE PROPERTY OF AMERICAN MODULAR SYSTEMS, INC. (AMS) AND SHALL NOT BE REPRODUCED, COPIED OR OTHERWISE DISPOSED OF DIRECTLY OR INDIRECTLY AND SHALL NOT BE USED IN WHOLE OR IN PART TO ASSIST IN THE MAKING OF OR FOR THE PURPOSE OF FURNISHING ANY INFORMATION FOR THE MAKING OF DRAWINGS, PRINTS, APPARATUS OR PARTS THEREOF WITHOUT THE FULL KNOWLEDGE AND WRITTEN CONSENT OF AMS. ALL PATENTABLE MATERIAL CONTAINED HEREIN AND ORIGINATING WITH AMS SHALL BE THE SOLE PROPERTY OF AMS.

PRE-CHECKED SET NAME  
**24' x 40' THRU 120' x 40'**  
**2:12 PITCHED ROOF**

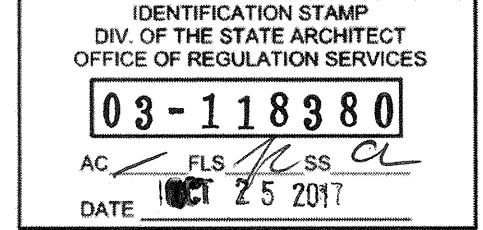
SITE SPECIFIC PROJECT NAME  
**STOCKPILE**  
**(1) 60x40 BUILDING**  
**(1) 72x40 BUILDING**

SHEET TITLE  
**60'x40' & 72'x40'**  
**REFLECTED CEILING/  
MECHANICAL PLAN**

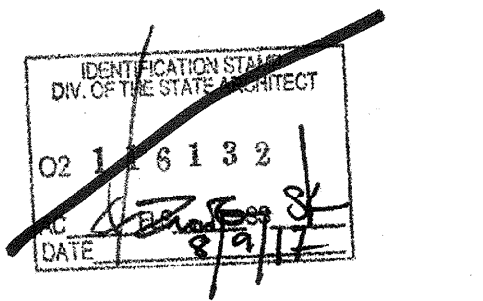
MANUFACTURER PROFESSIONAL OF RECORD ON PC



AGENCY TRACKING NO. 63321-241  
FILE NO. 15-6



PROJECT SPECIFIC STATE AGENCY APPROVAL



ORIGINAL PC STATE AGENCY APPROVAL

**BASED ON PC# 02-113939**  
PRE-CHECK (PC) DOCUMENT - CODE: 2013 CBC  
A SEPARATE PROJECT APPLICATION FOR CONSTRUCTION IS REQUIRED

REVISIONS

△	
△	
△	

DRAWN BY: BA  
SCALE: AS NOTED  
DATE: 04/27/17  
SHEET NUMBER

**M1.0**

GENERAL NOTES

B