

MODULAR MANUFACTURER PROPRIETARY STATEMENT
THESE DRAWINGS AND THE MATERIAL CONTAINED THEREIN ARE THE PROPERTY OF AMERICAN MODULAR SYSTEMS, INC. (AMS) AND SHALL NOT BE REPRODUCED, COPIED OR OTHERWISE DISPOSED OF DIRECTLY OR INDIRECTLY AND SHALL NOT BE USED IN WHOLE OR IN PART TO ASSIST IN THE MAKING OF OR FOR THE PURPOSE OF FURNISHING ANY INFORMATION FOR THE MAKING OF DRAWINGS, PRINTS, APPARATUS OR PARTS THEREOF WITHOUT THE FULL KNOWLEDGE AND WRITTEN CONSENT OF AMS. ALL PATENTABLE MATERIAL CONTAINED HEREIN AND ORIGINATING WITH AMS SHALL BE THE SOLE PROPERTY OF AMS.

PRE-CHECKED SET NAME
24' x 40' THRU 120' x 40'
2:12 PITCHED ROOF

SITE SPECIFIC PROJECT NAME

SHEET TITLE

WALL FRAMING ELEVATIONS & SCHEDULES

MANUFACTURER PROFESSIONAL OF RECORD ON PC

05/19/2015
PROJECT SPECIFIC STATE AGENCY APPROVAL

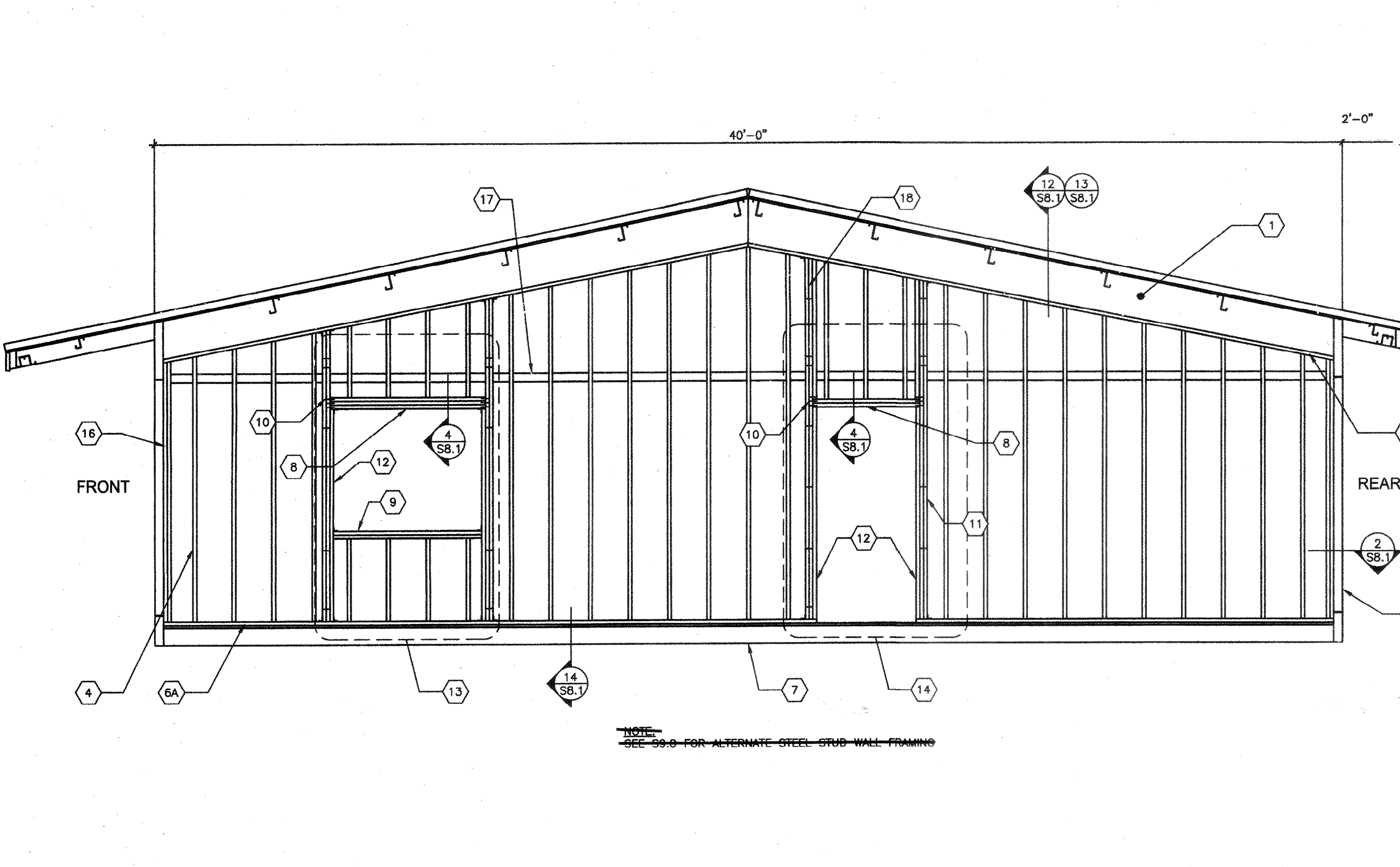
02 11 39 39
DATE 6/19/2015

ORIGINAL PC STATE AGENCY APPROVAL
IDENTIFICATION STAMP
DIV. OF THE STATE ARCHITECT
PC 02-113939
DATE 6/19/2015

PRE-CHECK (PC) DOCUMENT -- CODE: 2013 CBC
A SEPARATE PROJECT APPLICATION FOR CONSTRUCTION IS REQUIRED

REVISIONS
DRAWN BY:
SCALE: AS NOTED
DATE:
SHEET NUMBER

S8.0



- 1 ROOF BEAM
- 2 2x PLATE NO SPLICE
- 3 2x PLATE
- 4 2x STUDS SPACED PER SCHEDULE W/(3) 0.131" x 3" END NAILS OR (4) 0.131" x 3" TOE NAILS T&B TO PLATES TYP.
- 5 HSS COLUMN
- 6 2x BOTTOM PLATE (P.T. AT CONCRETE FLOORS)
- 6A 2x BOTTOM PLATE (P.T. AT CONCRETE FLOORS)
- 7 PERIMETER FLOOR BEAM
- 8 HEADER PER SCHEDULE AND DETAIL 4/S8.1
- 9 WINDOW SILL PER SCHEDULE
- 10 END NAILS THROUGH KING STUD TO HEADER; SILL PER SCHEDULE
- 11 KING STUDS PER SCHEDULE
- 12 2x TRIMMER
- 13 OPTIONAL WINDOW OPENING FRAMING PER SCHEDULE (REFER TO 4/S8.0 FOR DETAILS AND FLOOR PLANS FOR LOCATIONS)
- 14 OPTIONAL DOOR OPENING FRAMING PER SCHEDULE (REFER TO 5/S8.0 FOR DETAILS AND FLOOR PLANS FOR LOCATIONS)
- 15A HVAC OPENING - INDOOR UNIT
- 15B HVAC OPENING - EXTERIOR WALL HUNG UNIT
- 16 2x NAILER
- 17 2x BLOCKING
- 18 KING STUD PER SCHEDULE INTERNAL PER SCHEDULE

NOTE: SEE CARPENTRY NOTES SHEET N1.0 SECTION 6 FOR WOOD SPECIES & GRADE

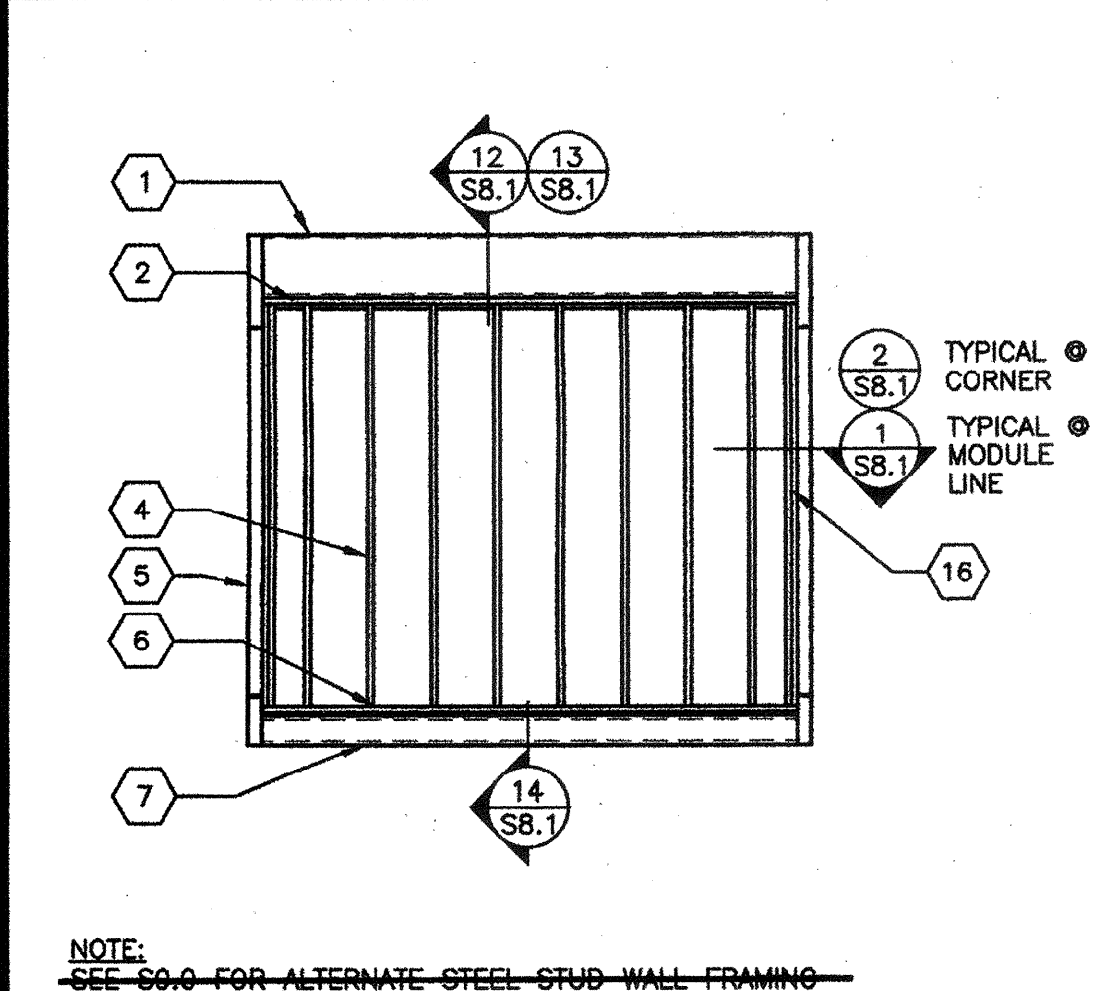
KEY NOTES

FINISH TYPE	FOUNDATION TYPE	COMMENTS	STUD TYPE	END WALLS		SIDE WALLS	
				TYPICAL SPACING	BLDG. CORNERS ³	TYPICAL SPACING	BLDG. CORNERS ³
5/8" PLYWOOD SHEATHING VERTICAL GROOVES @ 8" O.C.	WOOD OR CONCRETE	WALL FINISH PER A5.1 JOINT DETAIL SEE 10/S8.1 NAILING PER BLDG SECTIONS	2x4 @ 16" O.C.	@ 16" O.C.	@ 16" O.C.	@ 12" O.C.	@ 16" O.C.
5/8" HARDIBOARD WITH SYNTHETIC STUCCO 5/8" HARDI-LAP SIDING	WOOD OR CONCRETE	PER SHEETS A5.1, A5.3, A5.5 & A5.7	2x4 @ 16" O.C.	@ 16" O.C.	@ 16" O.C.	DBL @ 16" O.C.	@ 16" O.C.
1/2" PLYWOOD SHEATHING (5 PLY 32/16) OR 1/2" O.S.B. PANELS WITH 7/8" STUCCO	CONCRETE ONLY	WALL FINISH PER A5.3 NAILING PER BLDG SECTIONS	2x4 @ 16" O.C.	@ 16" O.C.	@ 16" O.C.	DBL @ 16" O.C.	@ 16" O.C.

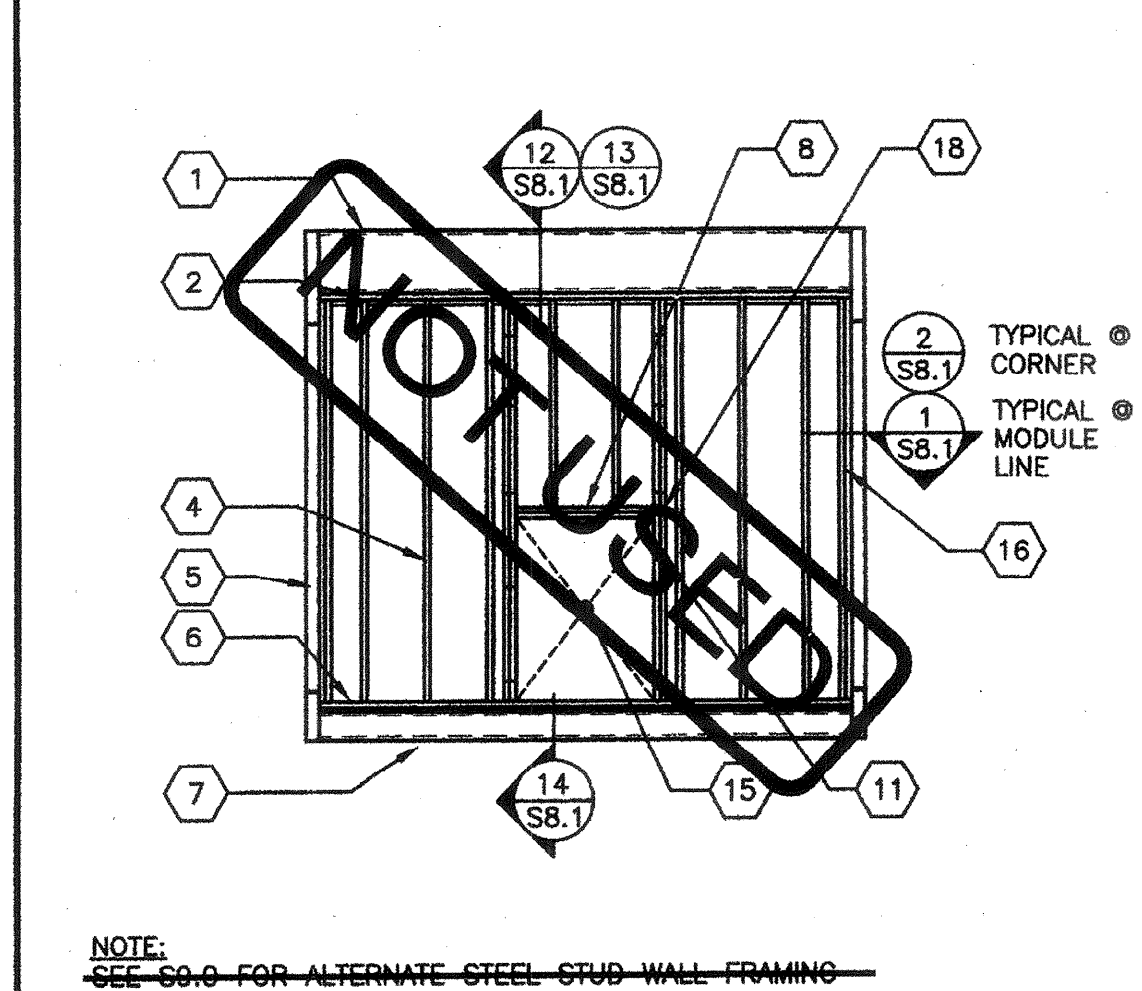
- ALL NAILS IN EXTERIOR APPLICATIONS TO BE GALVANIZED.
- BUILDING CORNERS ARE DEFINED AS A DISTANCE OF 4 FEET IN BOTH DIRECTIONS FROM EACH CORNER OF THE BUILDING
- TYPICAL PLYWOOD NAILING WHERE OCCURS: 131x2 1/4" GALV @ 6" O.C. E.N. & 12" O.C. F.N. (ALL EDGES BLOCKED)

AGENCY TRACKING NO. 63321-241
FILE NO. 15-6
IDENTIFICATION STAMP
DIV. OF THE STATE ARCHITECT
OFFICE OF REGULATION SERVICES
03-118380
AC FLS SS CL
DATE OCT 25 2011

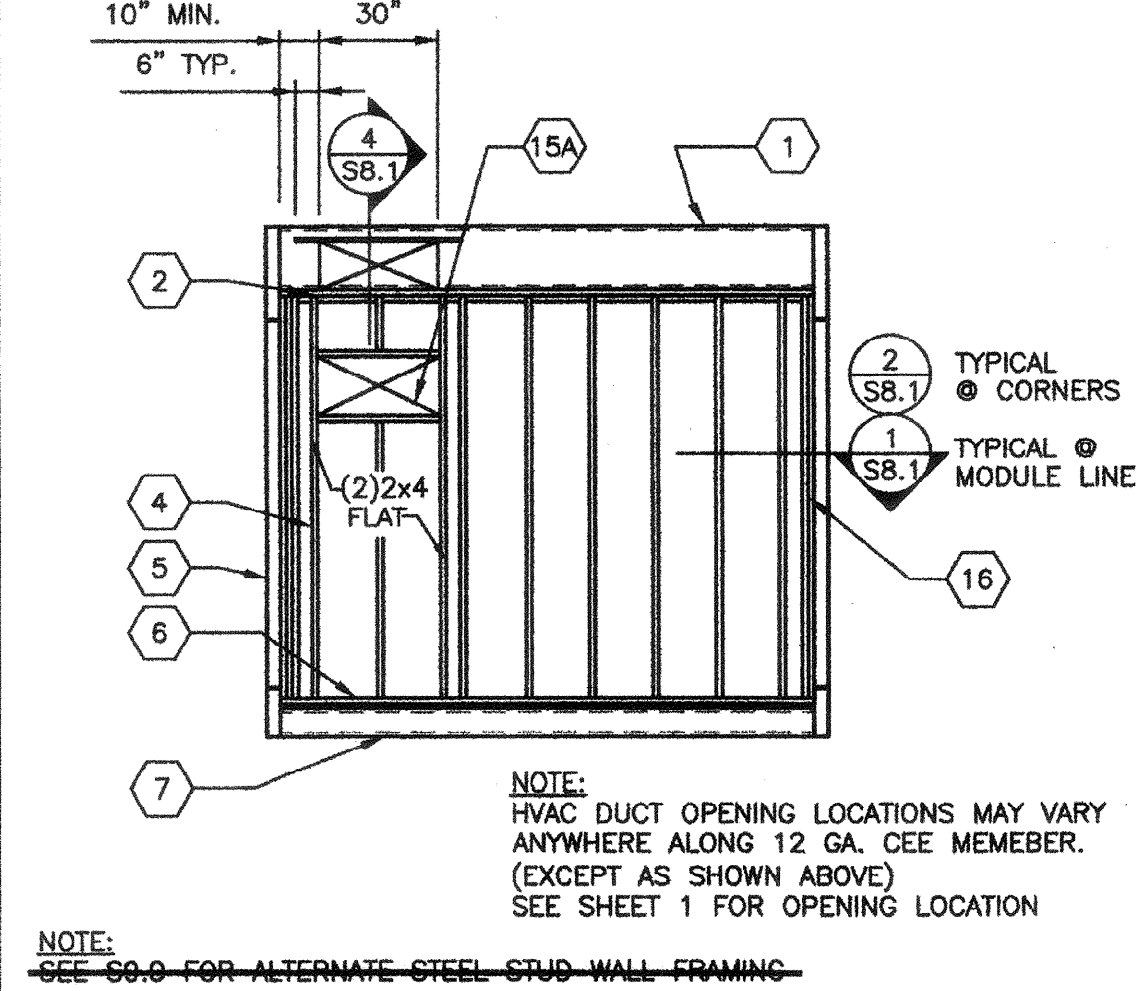
TYPICAL SIDE WALL FRAMING



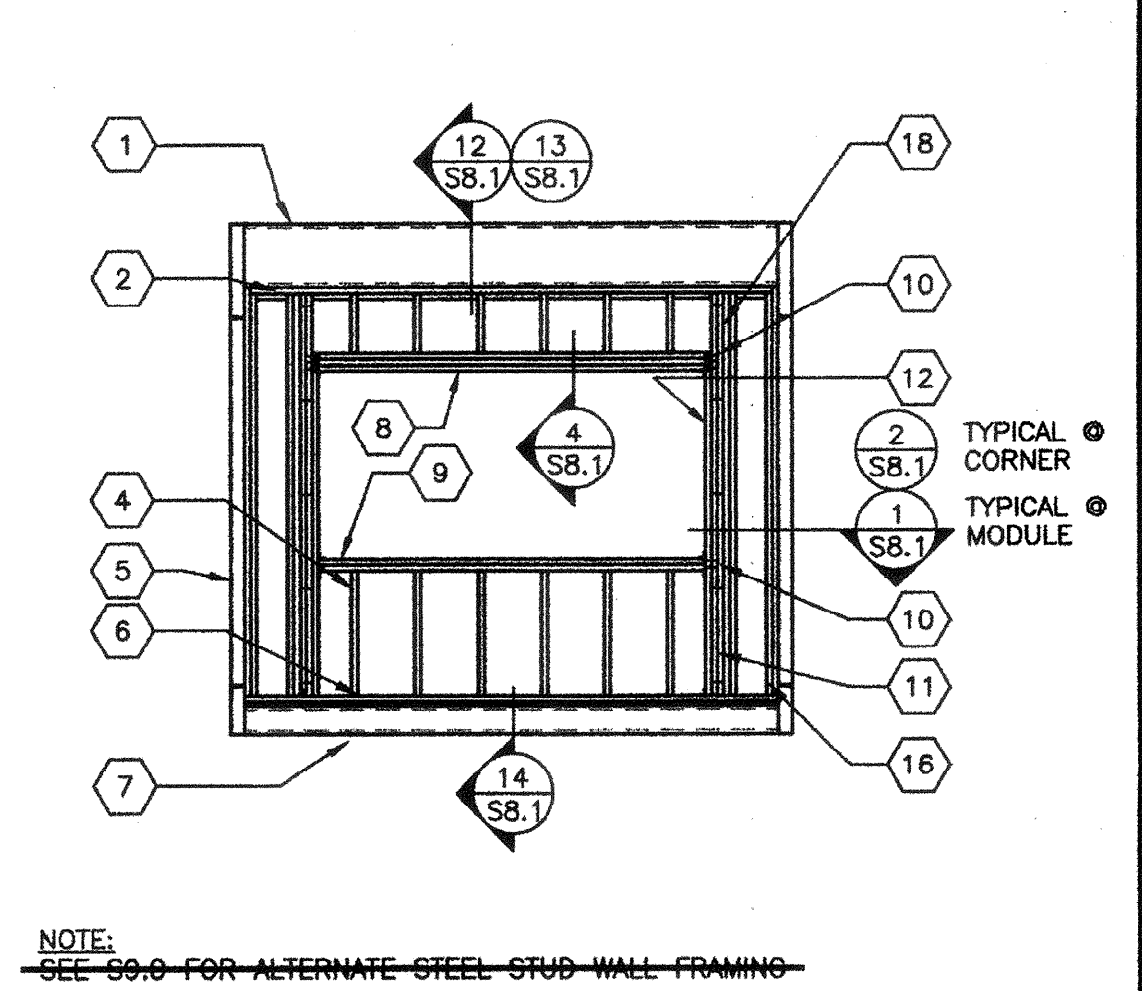
TYP END WALL FRAMING w/NO OPENINGS



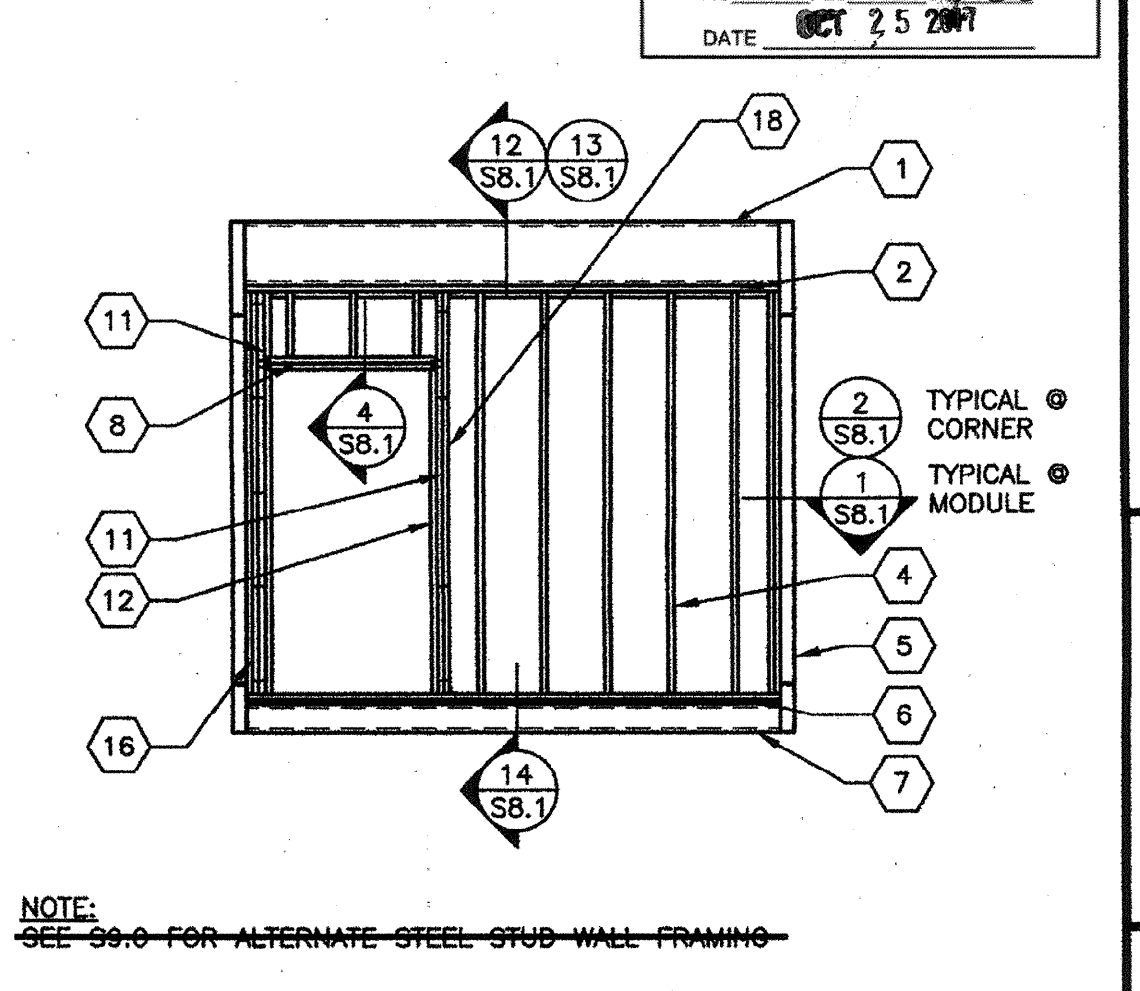
TYP END WALL FRAMING w/INDOOR HVAC UNIT



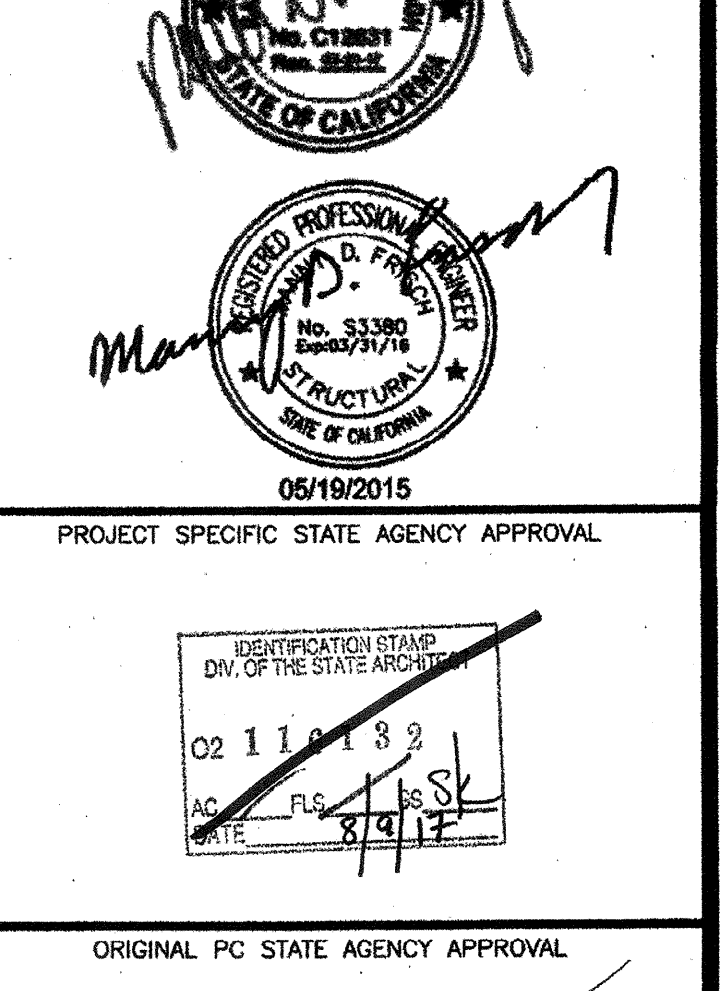
TYP END WALL FRAMING w/WALL HUNG HVAC UNIT



TYPICAL END WALL FRAMING w/WINDOW



TYPICAL END WALL FRAMING w/DOOR



DOOR/WINDOW OPENINGS AT TYPICAL 2x6 - SIDE & END WALLS (NO STUCCO)

OPENING	KING STUDS ¹	KING STUDS INTERNALING SPACING ²	HEADER MEMBERS	HEADER TO KIND STUDS NAILS	SILL MEMBERS	SILL TO KIND STUDS NAILS
8'-0" UP TO 10'-0"	2	16" O.C. MAX	3	10	2	4
6'-0" UP TO 8'-0"	2	16" O.C. MAX	3	8	2	4
3'-0" UP TO 6'-0"	2	16" O.C. MAX	2	6	2	3
3'-0" OR LESS	2	16" O.C. MAX	2	4	2	3

DOOR/WINDOW OPENINGS AT STUCCO 2x6 - SIDE & END WALLS

OPENING	KING STUDS ¹	KING STUDS INTERNALING SPACING ²	HEADER MEMBERS	HEADER TO KIND STUDS NAILS	SILL MEMBERS	SILL TO KIND STUDS NAILS
8'-0" UP TO 10'-0"	3	16" O.C. MAX	3	10	2	4
6'-0" UP TO 8'-0"	3	16" O.C. MAX	3	8	2	4
3'-0" UP TO 6'-0"	2	16" O.C. MAX	2	6	2	3
3'-0" OR LESS	2	16" O.C. MAX	2	4	2	3

DOOR/WINDOW OPENINGS AT TYPICAL 2x4 END WALL (TRANSVERSE) (NO STUCCO)

OPENING	KING STUDS ¹	KING STUDS INTERNALING SPACING ²	HEADER MEMBERS	HEADER TO KIND STUDS NAILS	SILL MEMBERS	SILL TO KIND STUDS NAILS
8'-0" UP TO 10'-0"	3	20" O.C. MAX	4	5	2	5
6'-0" UP TO 8'-0"	2	20" O.C. MAX	3	4	2	4
3'-0" UP TO 6'-0"	2	20" O.C. MAX	3	3	2	3
3'-0" OR LESS	2	20" O.C. MAX	2	3	2	3

DOOR/WINDOW OPENINGS AT STUCCO 2x4 END WALL (TRANSVERSE)

OPENING	KING STUDS ¹	KING STUDS INTERNALING SPACING ²	HEADER MEMBERS	HEADER TO KIND STUDS NAILS	SILL MEMBERS	SILL TO KIND STUDS NAILS
8'-0" UP TO 10'-0"	4	16" O.C. MAX	4	5	3	5
6'-0" UP TO 8'-0"	3	16" O.C. MAX	3	4	2	4
3'-0" UP TO 6'-0"	3	16" O.C. MAX	3	3	2	3
3'-0" OR LESS	2	16" O.C. MAX	2	3	2	3

DOOR/WINDOW OPENINGS AT TYP. 2x4 SIDE WALL - NOT @ CORNERS³ (NO STUCCO)

OPENING	KING STUDS ¹	KING STUDS INTERNALING SPACING ²	HEADER MEMBERS	HEADER TO KIND STUDS NAILS	SILL MEMBERS	SILL TO KIND STUDS NAILS
8'-0" UP TO 10'-0"	4	16" O.C. MAX	4	7	2	5
6'-0" UP TO 8'-0"	3	16" O.C. MAX	3	6	2	4
3'-0" UP TO 6'-0"	2	16" O.C. MAX	3	4	2	3
3'-0" OR LESS	2	16" O.C. MAX	2	4	2	3

DOOR/WINDOW OPENINGS AT STUCCO 2x4 SIDE WALL - NOT @ CORNERS³

OPENING	KING STUDS ¹	KING STUDS INTERNALING SPACING ²	HEADER MEMBERS	HEADER TO KIND STUDS NAILS	SILL MEMBERS	SILL TO KIND STUDS NAILS
8'-0" UP TO 10'-0"	5	16" O.C. MAX	4	7	3	5
6'-0" UP TO 8'-0"	3	16" O.C. MAX	3	6	2	4
3'-0" UP TO 6'-0"	3	16" O.C. MAX	3	4	2	3
3'-0" OR LESS	2	16" O.C. MAX	2	4	2	3

DOOR/WINDOW OPENINGS AT TYP. 2x4 SIDE WALL @ BLDG CORNERS³ (NO STUCCO)

OPENING	KING STUDS ¹	KING STUDS INTERNALING SPACING ²	HEADER MEMBERS	HEADER TO KIND STUDS NAILS	SILL MEMBERS	SILL TO KIND STUDS NAILS
8'-0" UP TO 10'-0"	5	12" O.C. MAX	4	9	2	5
6'-0" UP TO 8'-0"	4	12" O.C. MAX	4	7	2	4
3'-0" UP TO 6'-0"	3	12" O.C. MAX	3	6	2	3
3'-0" OR LESS	3	12" O.C. MAX	2	4	2	3

DOOR/WINDOW OPENINGS AT STUCCO 2x4 SIDE WALL @ BLDG CORNERS³

OPENING	KING STUDS ¹	KING STUDS INTERNALING SPACING ²	HEADER MEMBERS	HEADER TO KIND STUDS NAILS	SILL MEMBERS	SILL TO KIND STUDS NAILS
8'-0" UP TO 10'-0"	7	12" O.C. MAX	4	9	3	5
6'-0" UP TO 8'-0"	5	12" O.C. MAX	4	7	2	4
3'-0" UP TO 6'-0"	5	12" O.C. MAX	3	6	2	3
3'-0" OR LESS	3	12" O.C. MAX	2	4	2	3

- PROVIDE (2) SIMPSON A34'S T&B OF KING STUDS TO PLATES FOR OPENINGS GREATER THAN 3'-0". PROVIDE (1) SIMPSON A34'S T&B OF KING STUDS TO PLATES FOR OPENINGS 3'-0" OR LESS.
- KING STUD INTERNALING UTILIZING 0.131"x3" NAILS STAGGERED
- BUILDING CORNERS ARE DEFINED AS A DISTANCE OF 4 FEET IN BOTH DIRECTIONS FROM EACH CORNER OF THE BUILDING

OPENING SCHEDULES