

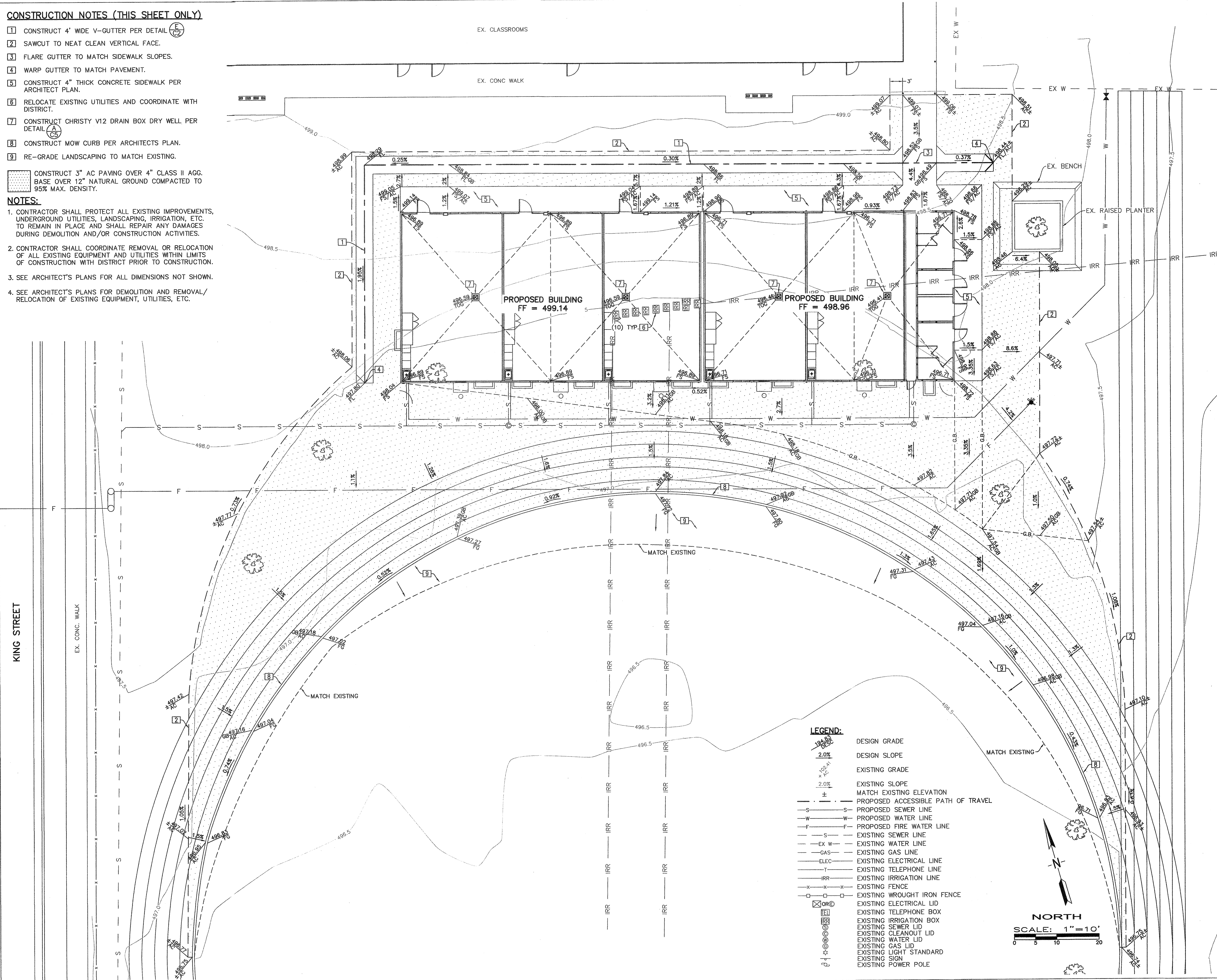
**CONSTRUCTION NOTES (THIS SHEET ONLY)**

- 1 CONSTRUCT 4' WIDE V-GUTTER PER DETAIL (E/C2)
- 2 SAWCUT TO NEAT CLEAN VERTICAL FACE.
- 3 FLARE GUTTER TO MATCH SIDEWALK SLOPES.
- 4 WARP GUTTER TO MATCH PAVEMENT.
- 5 CONSTRUCT 4" THICK CONCRETE SIDEWALK PER ARCHITECT PLAN.
- 6 RELOCATE EXISTING UTILITIES AND COORDINATE WITH DISTRICT.
- 7 CONSTRUCT CHRISTY V12 DRAIN BOX DRY WELL PER DETAIL (A/C5)
- 8 CONSTRUCT MOW CURB PER ARCHITECTS PLAN.
- 9 RE-GRADE LANDSCAPING TO MATCH EXISTING.

CONSTRUCT 3" AC PAVING OVER 4" CLASS II AGG. BASE OVER 12" NATURAL GROUND COMPACTED TO 95% MAX. DENSITY.

**NOTES:**

1. CONTRACTOR SHALL PROTECT ALL EXISTING IMPROVEMENTS, UNDERGROUND UTILITIES, LANDSCAPING, IRRIGATION, ETC. TO REMAIN IN PLACE AND SHALL REPAIR ANY DAMAGES DURING DEMOLITION AND/OR CONSTRUCTION ACTIVITIES.
2. CONTRACTOR SHALL COORDINATE REMOVAL OR RELOCATION OF ALL EXISTING EQUIPMENT AND UTILITIES WITHIN LIMITS OF CONSTRUCTION WITH DISTRICT PRIOR TO CONSTRUCTION.
3. SEE ARCHITECT'S PLANS FOR ALL DIMENSIONS NOT SHOWN.
4. SEE ARCHITECT'S PLANS FOR DEMOLITION AND REMOVAL/RELOCATION OF EXISTING EQUIPMENT, UTILITIES, ETC.



PRIME CONSULTANT

**IBI** ARCHITECTURE PLANNING

San Luis Obispo  
4119 Broad Street, Suite 210  
San Luis Obispo, CA 93401  
805.546.0433 fax: 805.546.0504  
ibigroup.com

SEAL

**COPYRIGHT:**  
Any reproduction or distribution for any purpose other than authorized by IBI Group is forbidden.

COPYRIGHT 2017 IBI GROUP

REVISIONS

NO.	DATE	APPRD.	DESCRIPTION

CONSULTANT

**PORTER & ASSOCIATES, INC.**  
ENGINEERING & SURVEYING  
1200 21st Street, Bakersfield, California 93301  
661.327.0362 FAX 661.327.1065

AGENCY INFORMATION:

AGENCY TRACKING NO. 63321-241  
FILE NO. 15-6

IDENTIFICATION STAMP  
DIV. OF THE STATE ARCHITECT  
OFFICE OF REGULATION SERVICES  
**03-118380**  
DATE OCT 2 5 2017

BAKERSFIELD CITY SCHOOL DISTRICT

**BESSIE OWENS INTERMEDIATE -**  
815 EUREKA ST. BAKERSFIELD CA, 93305

OPSC or OSHPD PROJ. NO:	
PROJECT NO:	16241.000
DRAWN BY:	Author
CHK'D BY:	Checker
ISSUE DATE:	08/29/2017

SHEET TITLE

**CIVIL IMPROVEMENTS  
GRADING PLAN  
CLASSROOM AND  
TRACK**

SHEET NUMBER

**C3**

CONSTRUCTION DOCUMENTS

PLOT DATE: 7/17/2017 1:39:33 PM J:\16241\_IBC\_BessieOwens\6.9 Drawings\69arch\curram\16241\_Site\_Bessie-2017-01-04-V2016.rvt