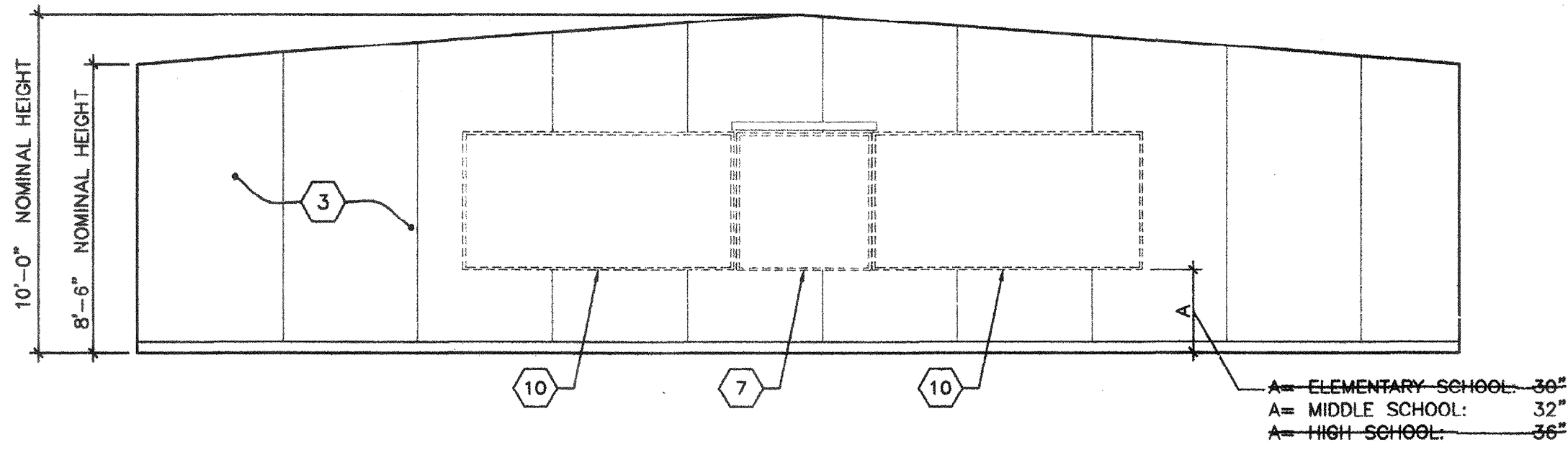
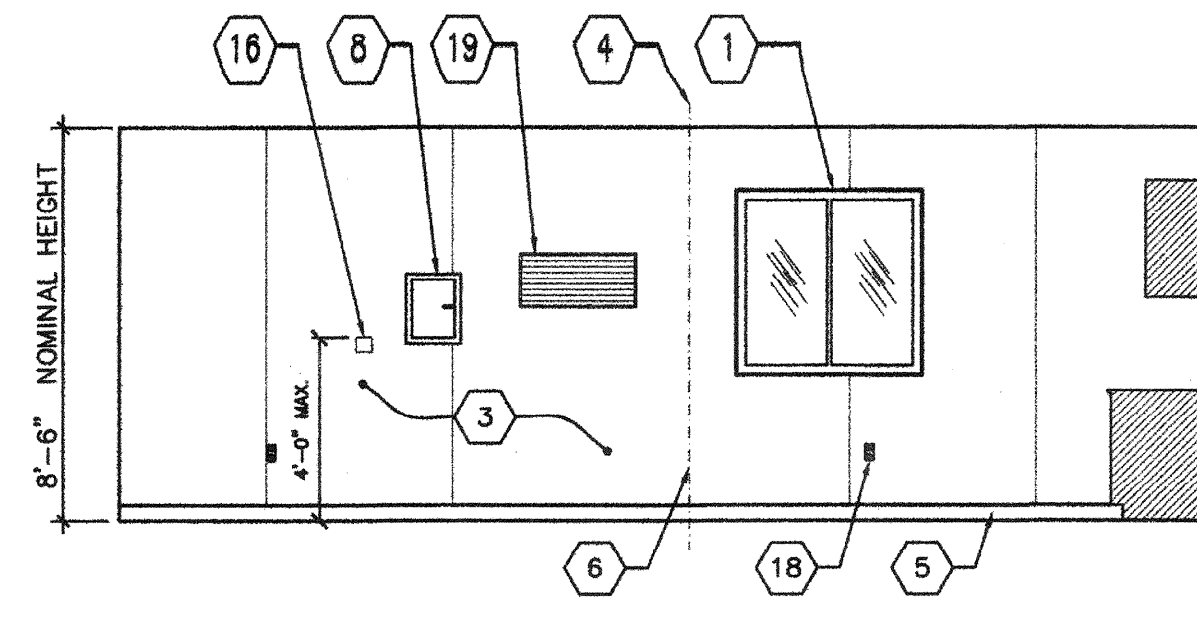


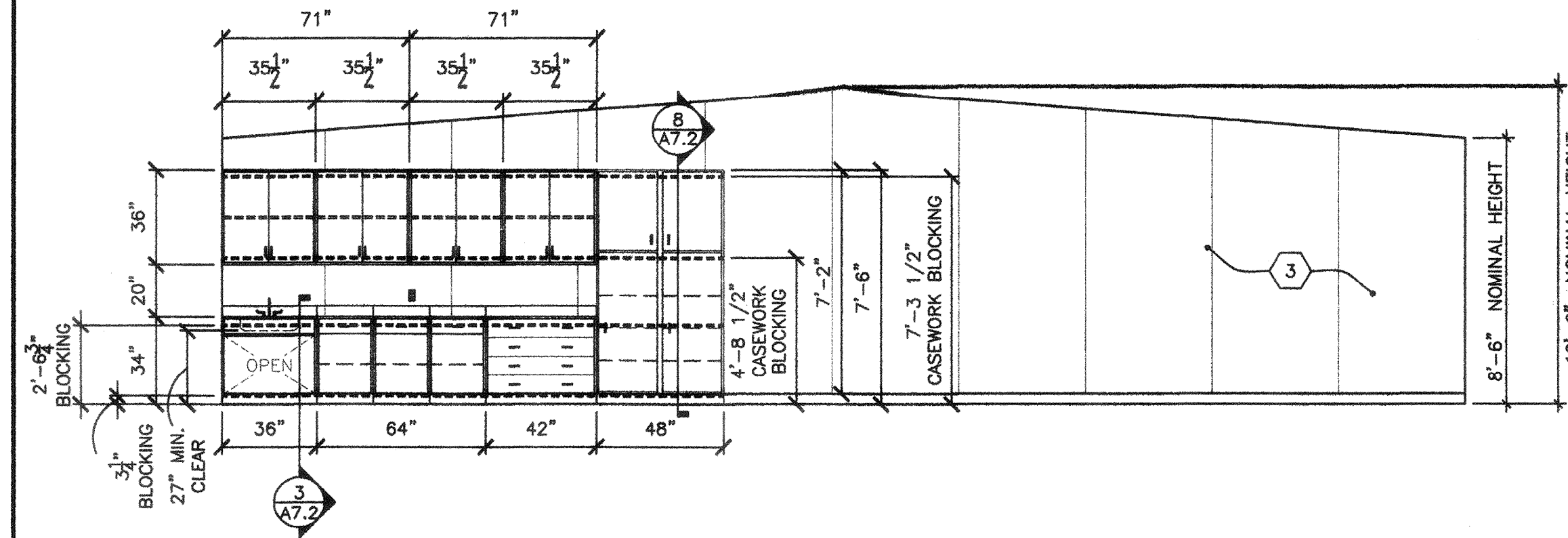
CLASSROOM ELEVATION (TYP. OF CLASSROOMS A102, 103, 104, 105 & 106) SCALE: 1/4"=1'-0" 1



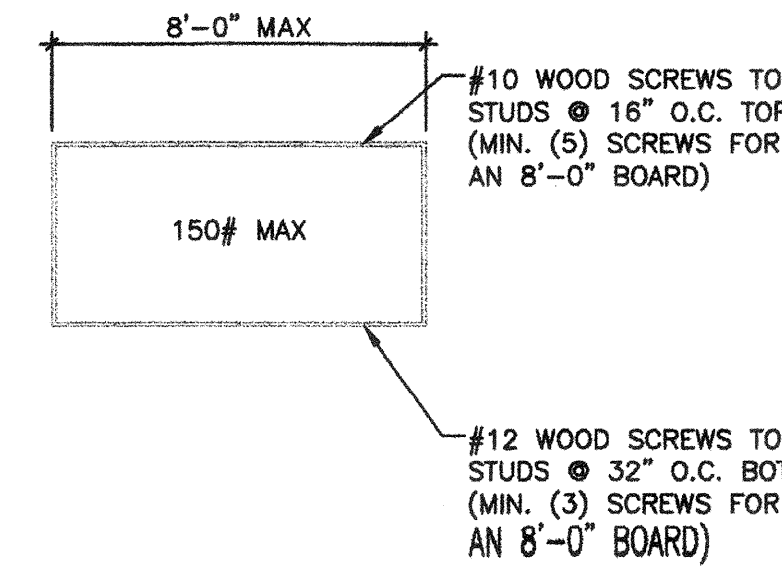
CLASSROOM ELEVATION (TYP. OF CLASSROOMS A102, 103, 104, 105 & 106) SCALE: 1/4"=1'-0" 2



CLASSROOM ELEVATION (TYP. OF CLASSROOMS A102, 103, 104, 105 & 106) SCALE: 1/4"=1'-0" 3



CLASSROOM ELEVATION (TYP. OF CLASSROOMS A102, 103, 104, 105 & 106) SCALE: 1/4"=1'-0" 4



NOTE: ATTACHMENT IS FOR EACH MAKERBOARD (REFERENCE ONLY. INSTALLED BY OTHERS)

NOT USED 5

NOT USED 6

NOT USED 7

MARKERBOARD ATT. DETAIL SCALE: N.T.S. 8

NOT USED 9

NOT USED 10

NOT USED 11

NOT USED 12

- 1 WINDOW SEE SPEC'S
- 2 TYP. EXTERIOR DOOR
- 3 VINYL WRAPPED TACKABLE WALLS
- 4 TYP. MOD LINE
- 5 TOP SET BASE
- 6 FULL PANEL CLOSE-UP AT MOD-LINES, TYP.
- 7 SMART BOARD BY OTHERS
- 8 ELECTRICAL PANEL - SEE ELECTRICAL SHEETS
- 9 NOT USED
- 10 (2) 8'x4' MARKER BOARDS (BY DISTRICT)
- 11 NOT USED
- 12 NOT USED
- 13 NOT USED
- 14 LIGHT SWITCH SEE ELECTRICAL SHEETS
- 15 EXIT TACTILE SIGN PER DETAIL 10/N4.0 (NIC)
- 16 THERMOSTAT, TOP @ 48" A.F.F. - SEE MECHANICAL SHEETS
- 17 FIRE EXTINGUISHER TOP OF OPERATING HANDLE @ +48" AFF MAX PROTRUSION MAX 4" FROM WALL OR BOTTOM OF FIRE EXTINGUISHER LESS THAN +27" A.F.F.
- 18 TYP. DUPLEX OUTLET - SEE ELECTRICAL SHEETS
- 19 HVAC GRILL



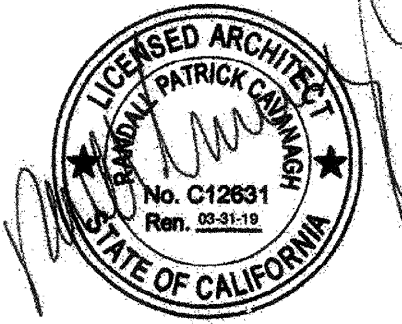
MODULAR MANUFACTURER PROPRIETARY STATEMENT  
 THESE DRAWINGS AND THE MATERIAL CONTAINED THEREIN ARE THE PROPERTY OF AMERICAN MODULAR SYSTEMS, INC. (AMS) AND SHALL NOT BE REPRODUCED, COPIED OR OTHERWISE DISPOSED OF DIRECTLY OR INDIRECTLY AND SHALL NOT BE USED IN WHOLE OR IN PART TO ASSIST IN THE MAKING OF OR FOR THE PURPOSE OF FURNISHING ANY INFORMATION FOR THE MAKING OF DRAWINGS, PRINTS, APPARATUS OR PARTS THEREOF WITHOUT THE FULL KNOWLEDGE AND WRITTEN CONSENT OF AMS. ALL PATENTABLE MATERIAL CONTAINED HEREIN AND ORIGINATING WITH AMS SHALL BE THE SOLE PROPERTY OF AMS.

PRE-CHECKED SET NAME  
**24' x 40' THRU 120' x 40'**  
**2:12 PITCHED ROOF**

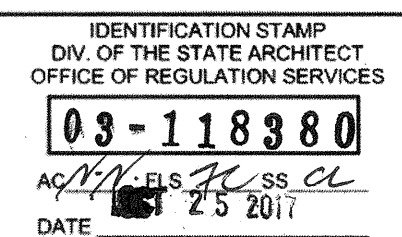
SITE SPECIFIC PROJECT NAME  
**STACKPILE**  
 (1) 60x40 BUILDING  
 (1) 72x40 BUILDING

SHEET TITLE  
**INTERIOR ELEVATIONS**  
**CLASSROOMS**

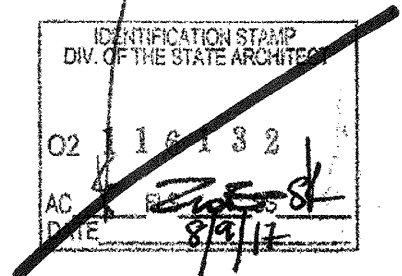
MANUFACTURER PROFESSIONAL OF RECORD ON PC



AGENCY TRACKING NO. 63321-241  
 FILE NO. 15-6



PROJECT SPECIFIC STATE AGENCY APPROVAL



ORIGINAL PC STATE AGENCY APPROVAL

BASED ON PC# 02-113939  
 PRE-CHECK (PC) DOCUMENT - CODE: 2013 CBC  
 A SEPARATE PROJECT APPLICATION FOR CONSTRUCTION IS REQUIRED

REVISIONS

|  |  |
|--|--|
|  |  |
|  |  |
|  |  |
|  |  |

DRAWN BY: BA  
 SCALE: AS NOTED  
 DATE: 04/27/17  
 SHEET NUMBER

**A4.0**

KEY NOTES