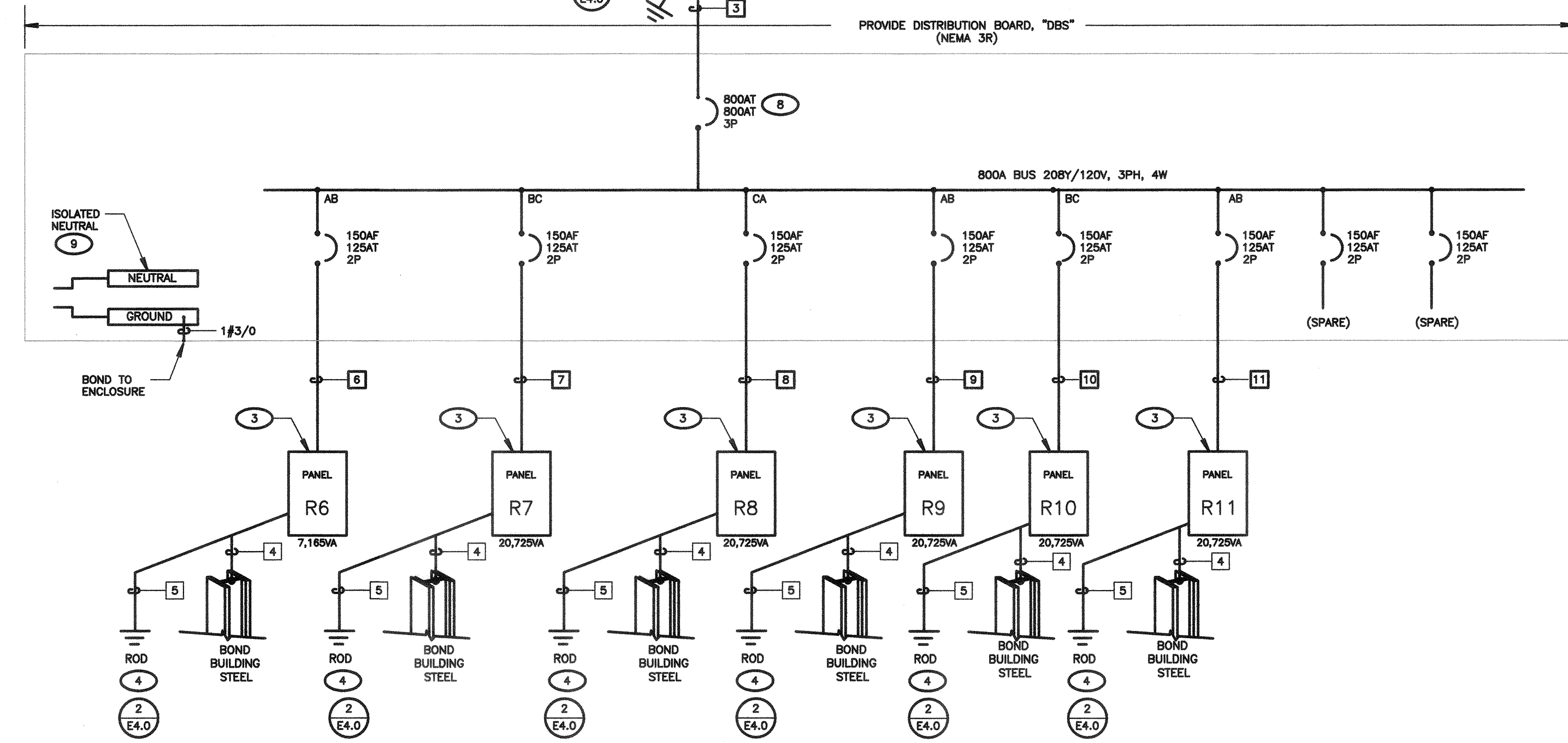


FEEDER SCHEDULE			
TAG	CONDUIT/CONDUCTOR	FROM	TO
1	(2) 2-1/2" C. EACH WITH 3#3/0 & 1#2 GND	MSB	DS
2	3" C. 3#500 MCM & 1#3 GND	DS	TR
3	(2) 3-1/2" C. EACH WITH 4#500 MCM & 1#3/0 GND	TR	DBS
4	1" C. 1#4 AWG GND	PORTABLE CLASSROOM	BUILDING STEEL
5	1" C. 1#4 AWG GND	PORTABLE CLASSROOM	GROUND ROD
6	1-1/4" C. 3#1 & 1#6 GND	DBS	R6
7	1-1/4" C. 3#1 & 1#6 GND	DBS	R7
8	1-1/4" C. 3#1 & 1#6 GND	DBS	R8
9	1-1/4" C. 3#1 & 1#6 GND	DBS	R9
10	1-1/4" C. 3#1 & 1#6 GND	DBS	R10
11	1-1/4" C. 3#1 & 1#6 GND	DBS	R11
12	1-1/4" C. 4#4 & 1#6 GND	MSB	PANEL "L"
13	(2) 2-1/2" CO (SPARE)		
14			
15			
16			
17			
18			
19			

SHEET NOTES

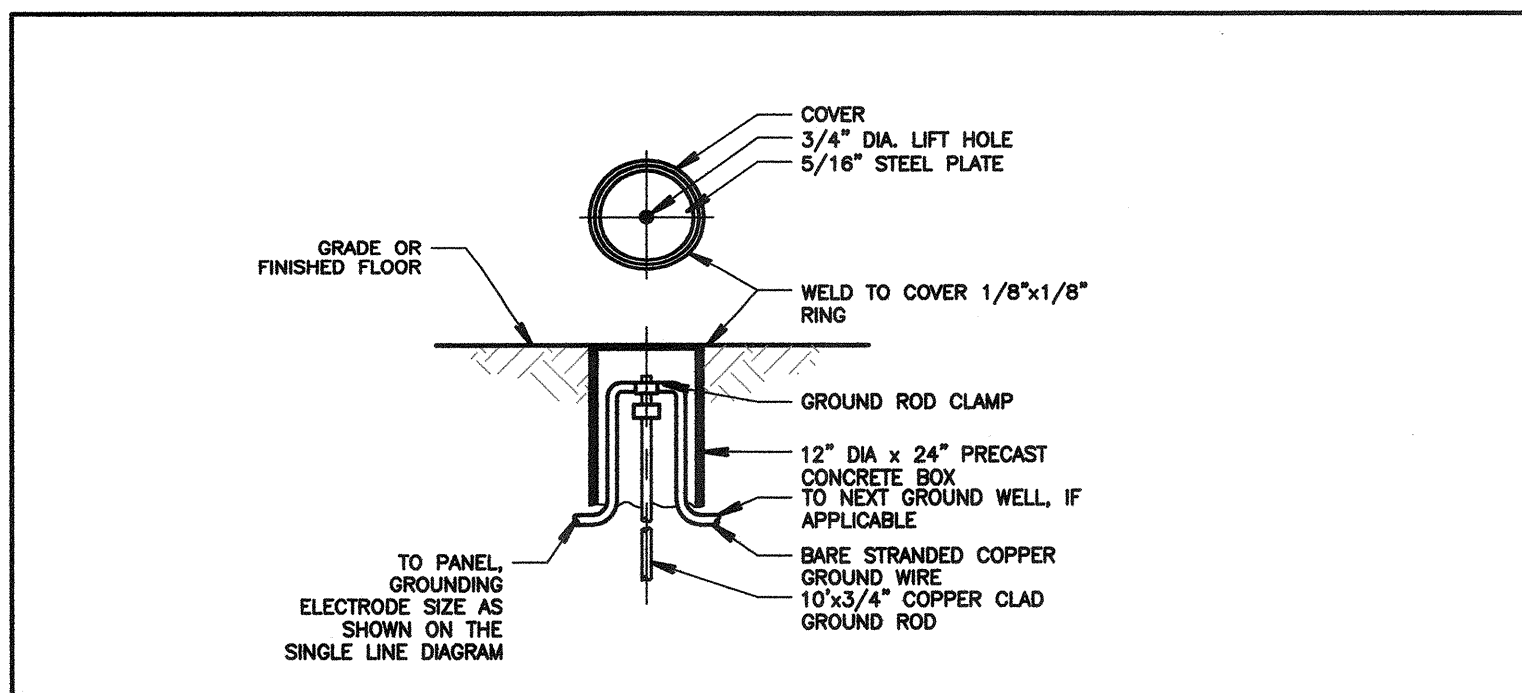
- VERIFY LOCATION OF ALL BUILDINGS AND APPENDICES ON ARCHITECTURAL AND CIVIL PLANS.
- CONTRACTOR SHALL VERIFY LOCATION & REQUIREMENTS OF ALL DEVICES/EQUIPMENT REQUIRING ELECTRICAL CONNECTION PRIOR TO BID PROPOSAL, ROUGH-IN, AND FINISH.
- CONTRACTOR SHALL, IN ROUTING ALL CIRCUITS, INCREASE CONDUCTOR & CONDUIT SIZE TO ALLOW FOR VOLTAGE DROP. SHOULD THE CONTRACTOR EXCEED ROUTING INDICATED ON DRAWINGS, ENGINEER OF RECORD MUST BE NOTIFIED PRIOR TO ANY DEVIATIONS FROM APPROVED PLAN CHECK (PERMIT SET) DRAWINGS.
- ALL 90 DEGREE CONDUIT BENDS AND RISERS SHALL BE PVC COATED RIGID STEEL.
- VERIFY LOCATION OF ALL EQUIPMENT ON ARCHITECTURAL AND CIVIL PLANS.
- PROVIDE CODE SIZED EQUIPMENT GROUNDING CONDUCTORS IN ALL OCCURRED CONDUITS.
- 1" CONDUIT MINIMUM UNDERGROUND.
- COORDINATE WORK WITH OTHER TRADES. OBTAIN ALL DRAWINGS THAT WILL REQUIRE COORDINATION AND PROVIDE ALL ELECTRICAL CONNECTIONS, DEVICES, AND WIRING REQUIRED, WHETHER SHOWN ON THE ELECTRICAL DRAWINGS OR NOT.
- CONTRACTOR SHALL FURNISH AND INSTALL PULL BOXES AS REQUIRED TO INSTALL CONDUCTORS PER CONDUCTOR MANUFACTURERS RECOMMENDATIONS, PER THE NATIONAL ELECTRICAL CODE, AND PER LOCAL AUTHORITIES HAVING JURISDICTION.
- FIELD CONDITIONS GOVERN DEMOLITION AND NEW CONSTRUCTION. CONTRACTOR SHALL VERIFY ACTUAL CONDITIONS PRIOR TO START OF WORK. THE ARCHITECT/ENGINEER SHALL BE NOTIFIED OF POSSIBLE FIELD PROBLEMS PRIOR TO DEMOLITION.
- ALL EMPTY CONDUITS SHALL BE PROVIDED WITH DIMENSIONED NYLON PULL STRING.
- CONTRACTOR SHALL FIELD VERIFY LOCATION OF ALL UNDERGROUND UTILITIES PRIOR TO ANY EXCAVATION OR TRENCHING. CONTRACTOR SHALL PROTECT ALL EXISTING/REMAINING UTILITIES IN PLACE. CONTRACTOR, AT HIS SOLE EXPENSE, SHALL REPAIR ANY UTILITY SYSTEMS DAMAGED DURING CONSTRUCTION.
- UNLESS NOTED OTHERWISE, ALL DEVICES AND TERMINATIONS SHALL BE RATED FOR 75 DEGREES CELSIUS.
- ALL CONDUCTORS #8 AND SMALLER SHALL BE THRU/THRU CU. ALL CONDUCTORS #6 AND LARGER SHALL BE XHHW-2 CU.
- PER NEC 110.24, SERVICE EQUIPMENT SHALL BE LEGIBLY MARKED IN THE FIELD WITH THE MAXIMUM AVAILABLE FAULT CURRENT. THE FIELD MARKING(S) SHALL INCLUDE THE DATE THE FAULT CURRENT CALCULATION WAS PERFORMED AND BE OF SUFFICIENT DURABILITY TO WITHSTAND THE ENVIRONMENT INVOLVED.
- PER NEC 110.16, ELECTRICAL EQUIPMENT, SUCH AS SWITCHBOARDS, PANELBOARDS, INDUSTRIAL CONTROL PANELS, METER SOCKET ENCLOSURES, AND MOTOR CONTROL CENTERS SHALL BE FIELD MARKED TO WARN QUALIFIED PERSONS OF POTENTIAL ELECTRIC ARC FLASH HAZARDS. THE MARKING SHALL BE LOCATED SO AS TO BE CLEARLY VISIBLE TO QUALIFIED PERSONS BEFORE EXAMINATION, ADJUSTMENT, SERVICING, OR MAINTENANCE OF THE EQUIPMENT.



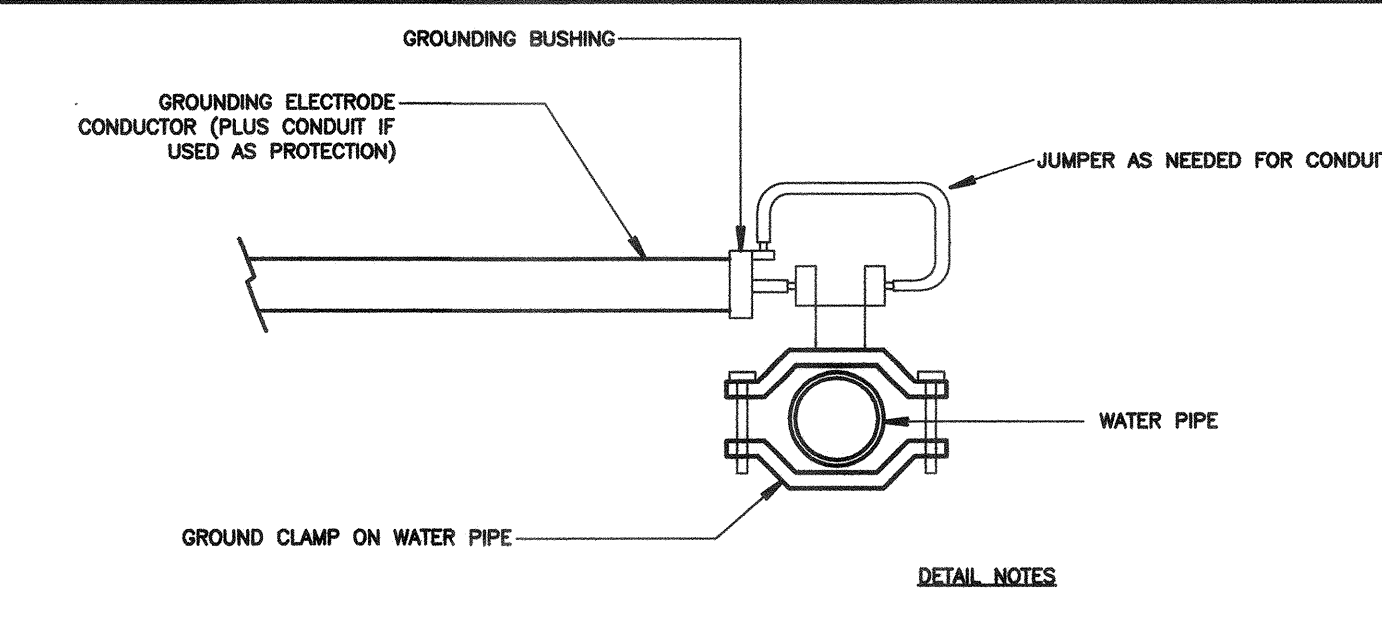
KEY NOTES

- (NOTE: THESE NOTES MAY NOT APPEAR ON ALL SHEETS)
- PROTECT IN PLACE.
 - EXISTING FEEDER.
 - BRANCH CIRCUIT LOAD CENTER PROVIDED BY MODULAR CLASSROOM MANUFACTURER. SEE MODULAR CLASSROOM SHOP DRAWINGS FOR PANEL SCHEDULE. VERIFY LOCATION & PROVIDE CONNECTION PER VENDOR'S SHOP DRAWINGS.
 - #4 AWG CU BOND TO GROUNDING LUGS ON STEEL BEAMS FOR EACH TRAILER MODULE PER MANUFACTURER'S & THE AHJ REQUIREMENTS.
 - PROVIDE NEMA 3R, FUSIBLE, HEAVY DUTY SAFETY SWITCH, 400AS, 350AF, 3-POLE, SQUARE D, # 1335R.
 - PROVIDE 17"x30" TRAFFIC RATED PULLBOX, WITH STEEL CHECKER PLATE COVER ENGRAVED WITH "ELECTRIC", #B17200X WITH #B1730-SLIM COVER, BY CHRISTY CONCRETE.
 - PROVIDE CIRCUIT BREAKER IN EXISTING SPACE. CIRCUIT BREAKER SHALL MEET OR EXCEED UTILITY COMPANY AVAILABLE FAULT CURRENT.
 - BACKFED MAIN CIRCUIT BREAKER.
 - REMOVE NEUTRAL DISCONNECT LINK, OR MAIN BONDING JUMPER, IF PRESENT.

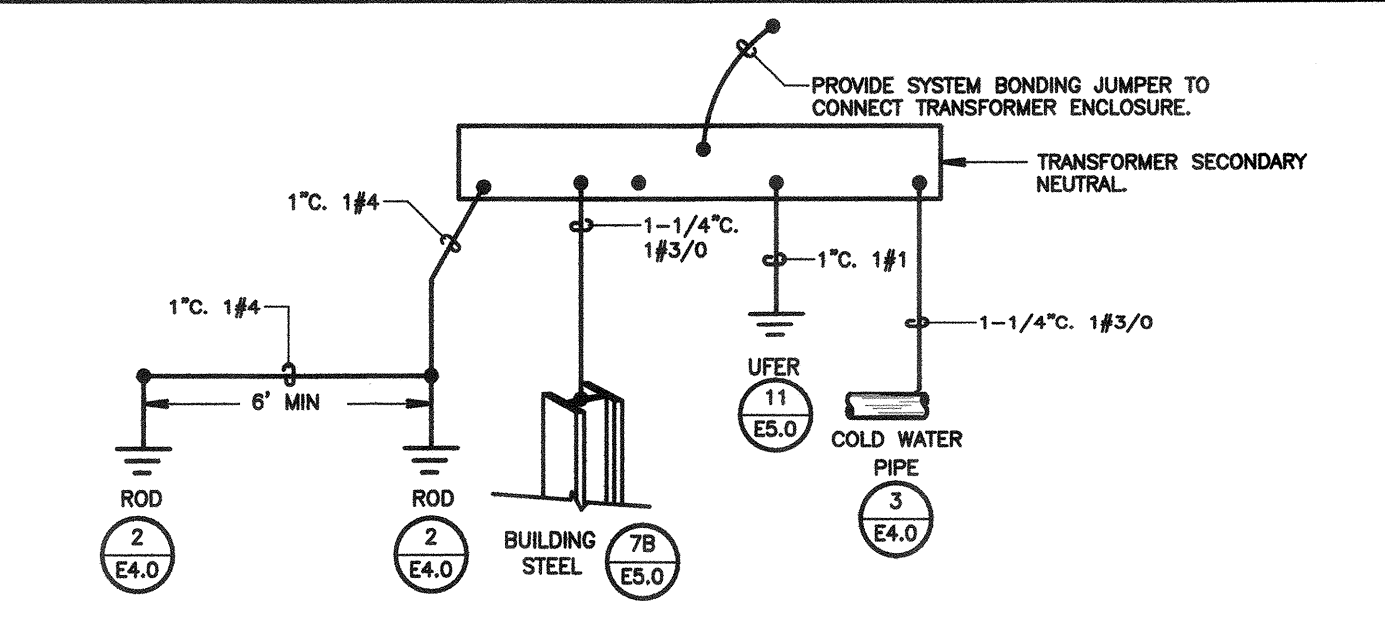
1 SINGLE LINE DIAGRAM
SCALE: NOT TO SCALE



2 GROUND ROD DETAIL
SCALE: NOT TO SCALE



3 COLD WATER GROUND DETAIL
SCALE: NOT TO SCALE



4 SEPARATELY DERIVED SYSTEM GROUNDING & BONDING
SCALE: NOT TO SCALE

PRIME CONSULTANT
IBI ARCHITECTURE PLANNING
San Luis Obispo
4119 Broad Street, Suite 210
San Luis Obispo, CA 93401
805.546.0433 fax: 805.546.0504
ibigroup.com



COPYRIGHT:
Any reproduction or distribution for any purpose other than authorized by IBI Group is forbidden.
COPYRIGHT 2017 IBI GROUP

REVISIONS			
NO.	DATE	APPRD.	DESCRIPTION

CONSULTANT
FERRANTI ENGINEERING
CONSULTING ELECTRICAL ENGINEERS
1211 MARICOPA HWY, SUITE 250
OJAI, CA 93023
(805) 705-4772
DALEFERRANTI@LIVE.COM

AGENCY INFORMATION:
AGENCY TRACKING NO. 63321-241
FILE NO. 15-6
IDENTIFICATION STAMP
DIV. OF THE STATE ARCHITECT
OFFICE OF REGULATION SERVICES
03-118380
AC FLS JCSA
DATE OCT 25 2017

BAKERSFIELD CITY SCHOOL DISTRICT

BESSIE OWENS INTERMEDIATE RELOCATABLES A101 - A106
815 EUREKA ST. BAKERSFIELD CA, 93305

OPSC or OSHPD PROJ. NO:
PROJECT NO: 16241.000
DRAWN BY: VZ
CHKD BY: DF
ISSUE DATE: 8/29/2017
SHEET TITLE

SINGLE LINE DIAGRAM

SHEET NUMBER

E4.0

CONSTRUCTION DOCUMENTS