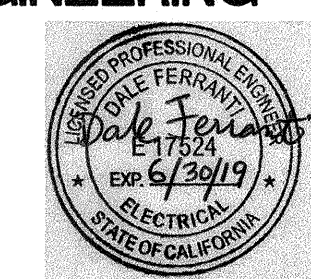


COPYRIGHT:
 Any reproduction or distribution for any purpose other than authorized by IBI Group is forbidden.
 COPYRIGHT 2017 IBI GROUP

REVISIONS			
NO.	DATE	APPRD.	DESCRIPTION

CONSULTANT
FERRANTI ENGINEERING
 CONSULTING ELECTRICAL ENGINEERS
 1211 MARICOPA HWY, SUITE 250
 OJAIL, CA 93023
 (805) 705-4772
 DALEFERRANTI@LIVE.COM



AGENCY INFORMATION:
 AGENCY TRACKING NO. 63321-241
 FILE NO. 15-6
 IDENTIFICATION STAMP
 DIV OF THE STATE ARCHITECT
 OFFICE OF REGULATION SERVICES
03-118980
 AC. ELS. J.C. SS. AL
 DATE 03/25/2017

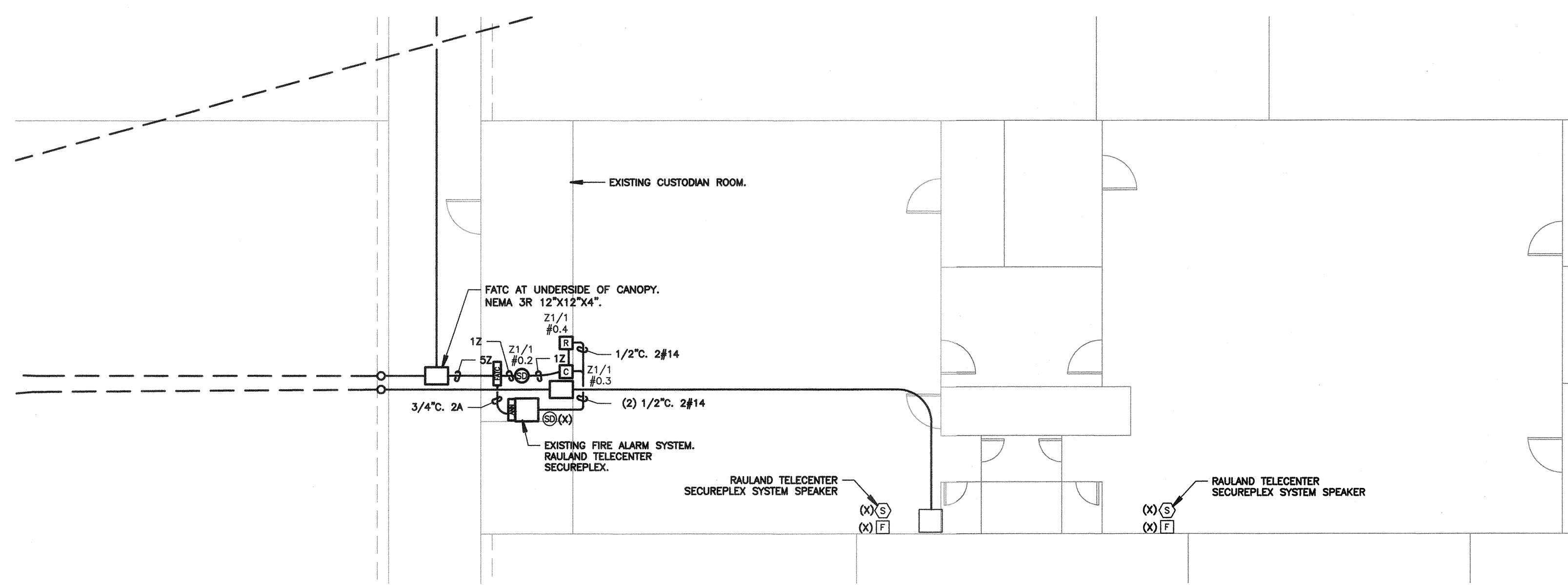
BAKERSFIELD CITY SCHOOL DISTRICT

BESSIE OWENS INTERMEDIATE RELOCATABLES A101 - A106
 815 EUREKA ST. BAKERSFIELD CA, 93305

OPSC or OSHPD PROJ. NO.:
 PROJECT NO.: 16241.000
 DRAWN BY: VZ
 CHK'D BY: DF
 ISSUE DATE: 8/29/2017
 SHEET TITLE

PARTIAL SITE FIRE ALARM PLAN, RELO FIRE ALARM PLAN

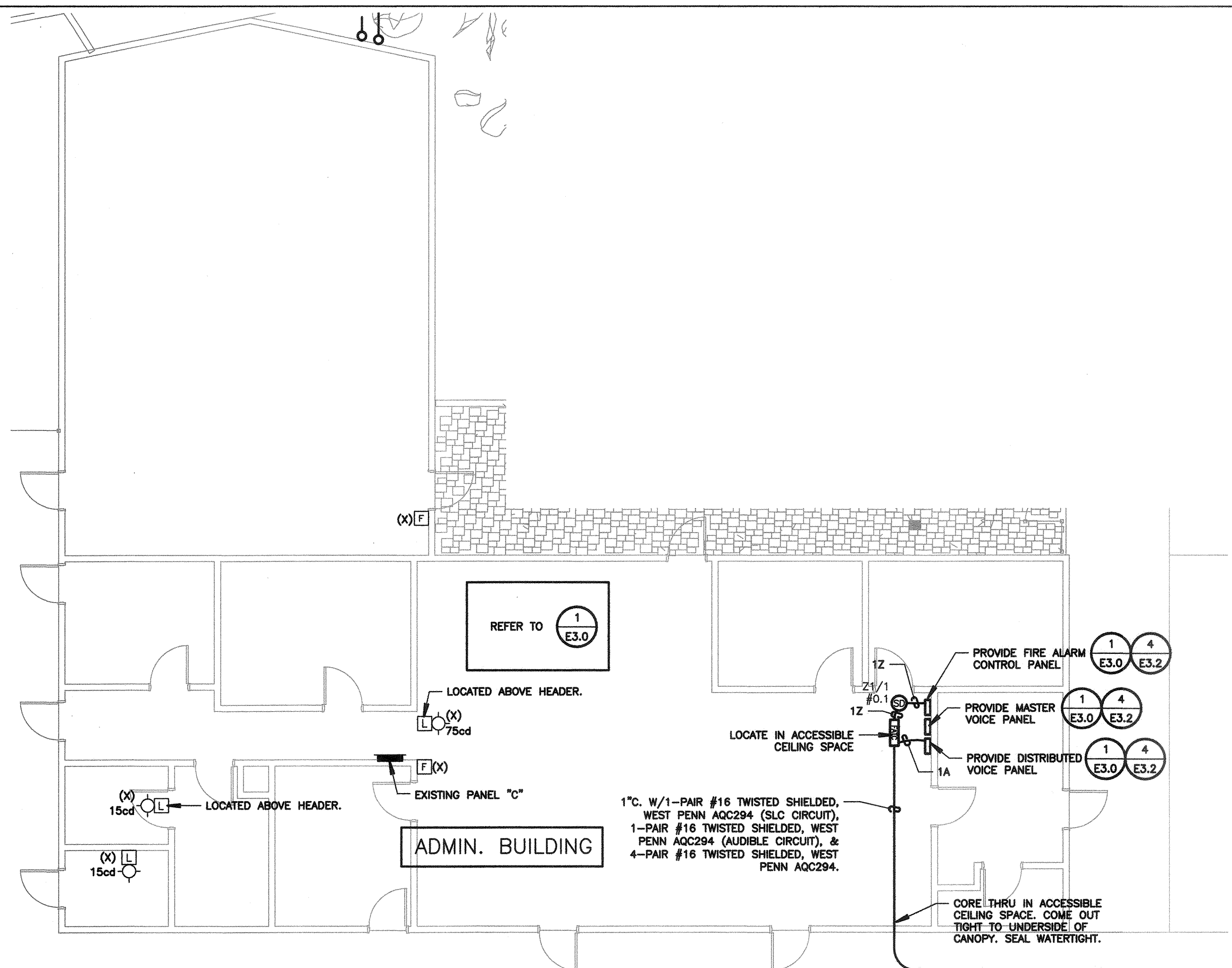
SHEET NUMBER
E2.4



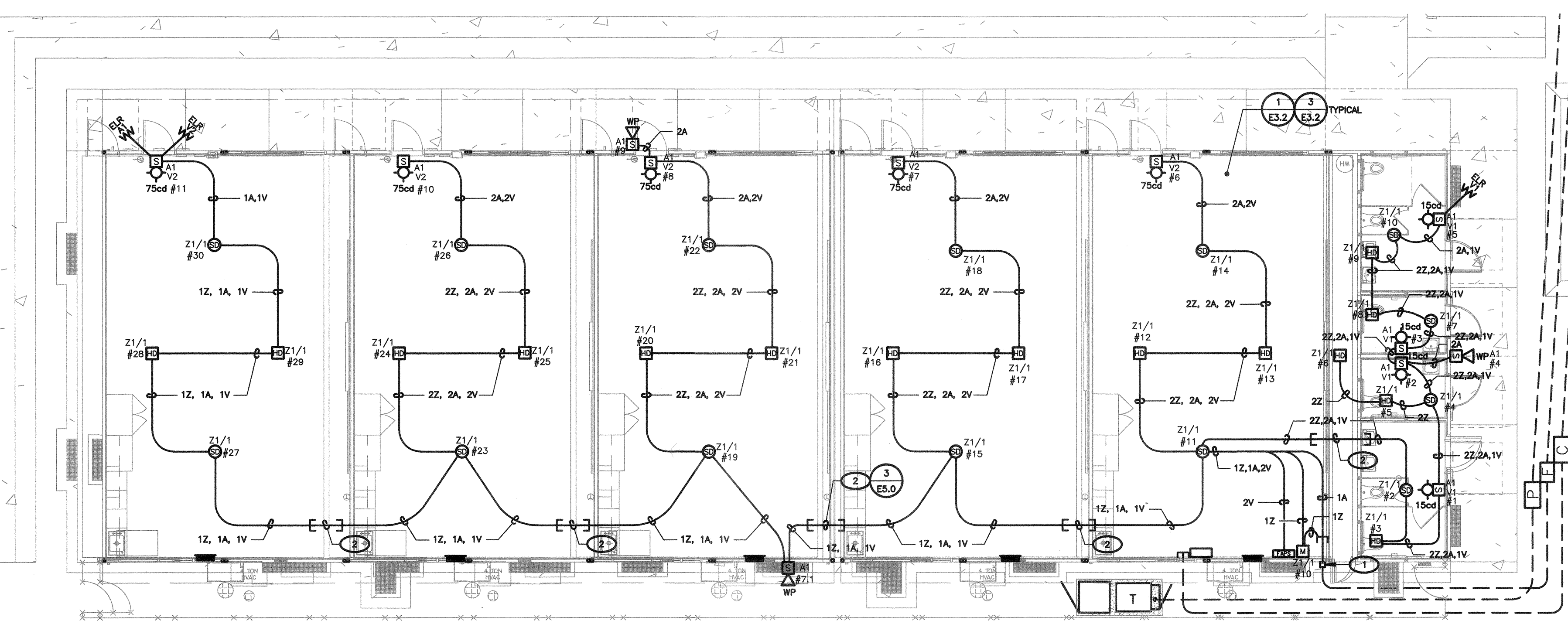
3 ENLARGED MULTI-PURPOSE BLDG. FIRE ALARM PLAN (BLDG. G)
 SCALE: 1/8"=1'-0"

GENERAL NOTES

- SMOKE DETECTORS SHALL BE INSTALLED 3' AWAY FROM SUPPLY AND RETURN AIR GRILLES.
- FINAL FIRE ALARM TEST OF ALL DEVICES SHALL BE WITNESSED BY THE PROJECT INSPECTOR. TEST SHALL INCLUDE ALL INFORMATION PER NFPA 72, FIGURE 14.6.2.4 AND READ OUT VERIFICATION FORM FROM CENTRAL STATION. TEST SHALL ALSO BE WITNESSED BY THE LOCAL AUTHORITY HAVING JURISDICTION (A.L.H.).
- UNDERGROUND AND EXTERIOR CONDUITS WILL HAVE WATER-TIGHT FITTINGS (C.E.C. 110.11 AND 300.6).
- AUDIBLE DEVICE(S) SHALL BE AT LEAST 15dba ABOVE AVERAGE AMBIENT SOUND LEVEL BUT NOT LESS THAN 75dba AT 10' OR MORE THAN 110 dbA IN TOTAL THROUGHOUT (NFPA 72 18.4.1 AND C.F.C. 907.6.2).
- AUDIBLE DEVICES SHALL SOUND THE CALIFORNIA CODE IN TEMPORAL PATTERN, CODE 3.
- VISUAL DEVICES SHALL NOT EXCEED TWO FLASHES PER SECOND AND SHALL NOT BE SLOWER THAN ONE FLASH PER SECOND. (NFPA 72 18.5.2.1).
- PROVIDE AN ENGRAVED NAMEPLATE INDICATING THE D.S.A. APPLICATION NUMBER, FILE NUMBER AND DATE OF INSTALLATION AT FIRE ALARM POWER EXPANDER PANEL. WHITE LETTERS ON A RED BACKGROUND.
- PROVIDE A COPY OF THE BATTERY CALCULATION AT THE FIRE ALARM POWER EXPANDER PANEL. BATTERY CALCULATION SHALL CONTAIN INFORMATION AS NOTED ON SCHEDULES AND BE PLASTIC LAMINATED. MOUNT ONTO INSIDE FACE OF DOOR.
- MORE THAN TWO VISIBLE NOTIFICATION APPLIANCES OR GROUPS OF SYNCHRONIZED APPLIANCES IN THE SAME ROOM OR ADJACENT SPACE WITHIN THE FIELD OF VIEW SHALL FLASH IN SYNCHRONIZATION (NFPA 72 18.5.4.3.2(4)).
- THE AUTOMATIC ALARM SYSTEM SHALL BE INSTALLED, TESTED AND MAINTAINED IN ACCORDANCE WITH THE STATE FIRE MARSHAL'S REGULATIONS (C.F.C. 907.9).
- THE FIRE ALARM SYSTEM SHALL CONFORM TO ARTICLE 760 OF THE CALIFORNIA ELECTRICAL CODE, CURRENT CALIFORNIA TITLE 24 REQUIREMENTS, CALIFORNIA FIRE CODE, NFPA 72 AND 101 STANDARDS, AMERICAN WITH DISABILITY ACT (ADA) REQUIREMENTS.
- DRAWINGS DO NOT SHOW ALL THE NECESSARY J-BOXES AND PULL BOXES WHICH WILL BE REQUIRED THROUGHOUT. IT IS THE CONTRACTOR'S RESPONSIBILITY TO PROVIDE ALL THESE BOXES AS NECESSARY TO TERMINATE CONDUITS AND RACEWAYS. PAINT BOXES TO MATCH COLOR OF THE FINISHED BUILDING WALLS.
- ALL JUNCTIONS BOXES AND DEVICES INDICATED ON BUILDING EXTERIORS SHALL BE WEATHERPROOF TYPE.
- FIRE ALARM WIRES SHALL BE COPPER TYPE THWN/THHN.
- ALL SIGNAL WIRING IN UNDERGROUND CONDUITS SHALL BE WET LOCATION TYPE.
- WHEN ALL FIRE ALARM DEVICES ARE INSTALLED AND PROGRAMMING IS COMPLETE, PROVIDE A FIRE ALARM DEVICE MAP IN THE SCHOOL MAIN OFFICE TO INDICATE TO SCHOOL PERSONNEL THE LOCATIONS OF THE NEW DEVICES.
- JUNCTION BOXES SHALL NOT CONTAIN SPLICES. CONDUCTORS SHALL BE PULLED THROUGH. TERMINATIONS SHALL BE PERFORMED.
- ALL EXPOSED CONDUITS AND BOXES SHALL BE PAINTED TO MATCH THE SURFACE WHERE INSTALLED.



2 ENLARGED ADMIN. BLDG. FIRE ALARM PLAN (BUILDING A)
 SCALE: 1/8"=1'-0"
 SEE 1 FOR CONTINUATION



1 FIRE ALARM PLAN (RELOS A101-A106)
 SCALE: 1/8"=1'-0"

CODE, RULES & REGULATIONS
 ALL WORK AND MATERIALS SHALL COMPLY WITH THE LATEST REGULATIONS OF THE STATE FIRE MARSHAL, CALIFORNIA CODE OF REGULATIONS, SERVING UTILITY COMPANIES AND OTHER APPLICABLE STATE ORDINANCES. NOTHING IN THESE PLANS OR SPECIFICATIONS IS TO BE CONSTRUED AS TO PERMIT WORK NOT CONFORMING TO THESE CODES, WHERE WORK OF A HIGHER DEGREE IS INDICATED IN THE PLANS OR SPECIFICATIONS THIS REQUIREMENT SHALL GOVERN.

FIRE ALARM LEVEL OF AUDIBILITY
 ALARM INDICATING DEVICES OF A FIRE ALARM SYSTEM INTENDED TO ALERT ALL OCCUPANTS SHALL BE SO LOCATED AND UNOBSTRUCTED AS TO CAUSE A LEVEL OF AUDIBILITY OF NOT LESS THAN 15db ABOVE AMBIENT NOISE LEVELS MEASURED FOUR FEET ABOVE THE FLOOR INSIDE BUILDING.
 AMBIENT NOISE LEVELS SHALL BE CONSTRUED TO MEAN THAT WHICH CAN NORMALLY BE EXPECTED TO EXIST WHEN THE FACILITY, BUILDING, ROOM OR AREA IS FUNCTIONING UNDER NORMAL OPERATIVE OR WORKING CONDITIONS.
 THE FIRE ALARM SIGNAL SHALL COMPLY WITH THE CALIFORNIA ELECTRICAL CODE, SECTIONS 32000 AND 32004, AND BE A TEMPORAL PATTERN, CODE 3.

FIRE ALARM MONITORING NOTE

AUTOMATIC FIRE ALARM SYSTEMS SHALL TRANSMIT THE ALARM, SUPERVISORY AND TROUBLE SIGNALS TO AN APPROVED SUPERVISING STATION AS REQUIRED BY NFPA 72 AS AMENDED BY ARTICLE 911. THE SUPERVISING STATION SHALL BE LISTED AS EITHER ULXP OR ULUS BY UNDERWRITERS LABORATORY OF SHALL MEET THE REQUIREMENTS OF FACTORY MUTUAL RESEARCH APPROVAL STANDARD 3011. SUPERVISION OF SYSTEM AND LEASED TELEPHONE LINES SHALL BE ARRANGED BY OWNER.

COMPLETE AUTOMATIC FIRE ALARM PLAN SUBMITTAL

THE FIRE ALARM SYSTEM SHOWN ON THESE PLANS HAS BEEN SUBMITTED AND APPROVED BY THE DIVISION OF THE STATE ARCHITECT. ANY SUBSTITUTION OF THE FIRE ALARM SYSTEM SHALL BE RESUBMITTED TO THE ARCHITECT FOR REVIEW AND APPROVAL. THE CONTRACTOR SHALL PAY ANY ADDITIONAL FEES THAT ARE INCURRED DUE TO THIS SUBSTITUTION.
 THE FIRE ALARM SYSTEM SHALL BE A TOTAL (COMPLETE) AUTOMATIC HEAT AND SMOKE DETECTION SYSTEM PER C.F.C. SECTION 907.2.3.6, AND SHALL COVER EVERY ROOM AND/OR AREA. UPON THE ACTIVATION OF ANY INITIATION DEVICE THE FIRE ALARM SYSTEM SHALL ALERT ALL OCCUPANTS AND TRANSMIT THE ALARM, SUPERVISORY, AND TROUBLE SIGNALS TO AN APPROVED SUPERVISING STATION (C.F.C. SECTION 907.2.3.5).

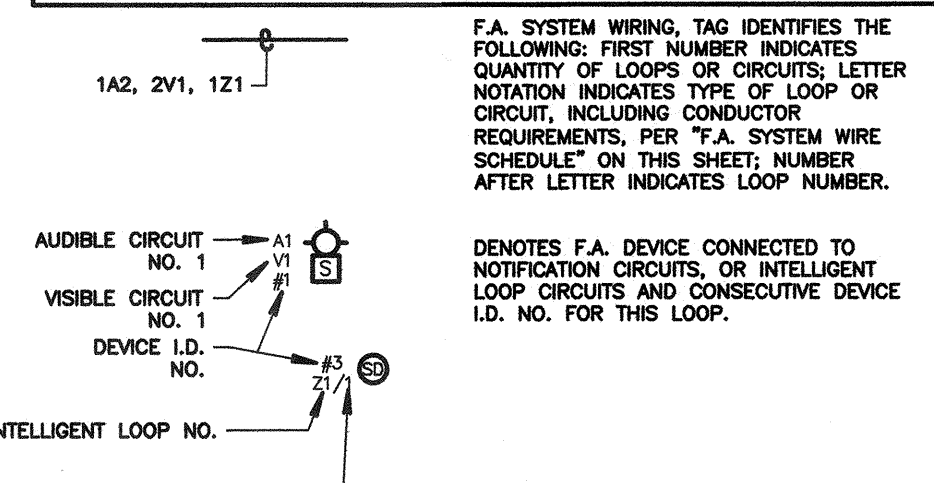
F.A. SYSTEM WIRE SCHEDULE

TAG	CONDUCTORS	DEVICE/FUNCTION
V	2#12, THWN/THHN	VISIBLE NOTIFICATION DEVICES-STROBE LIGHTS
Z	1-PAIR #18 TWISTED, WEST PENN ACC225 (BLDG. EXTERIOR & UNDERGROUND)	CAMPUS/BLDG. SLC INTELLIGENT LOOP INITIATING DEVICES (PULL STATIONS, SMOKE AND HEAT DETECTORS, WATER FLOW AND TAMPER SWITCHES, MONITOR AND CONTROL MODULES, ETC.)
P	1-PAIR #18 TWISTED, WEST PENN D990 (BLDG. INTERIOR)	DEVICE POWER-24VDC
A	2#14, THWN/THHN	AUDIBLE NOTIFICATION DEVICES-SPEAKERS
A	1-PAIR #18 TWISTED SHIELDED PAIR, WEST PENN ACC294 (BLDG. EXTERIOR & UNDERGROUND) 1-PAIR #18 TWISTED SHIELDED PAIR, WEST PENN 991 (BLDG. INTERIOR).	AUDIBLE NOTIFICATION DEVICES-SPEAKERS

SCHOOLS FIRE ALARM REQUIREMENTS

THE FIRE ALARM SYSTEM SHALL CONFORM TO CALIFORNIA BUILDING CODE, SECTION 907.2.3; CALIFORNIA ELECTRICAL CODE, ARTICLE 760 AND CALIFORNIA FIRE CODE, CHAPTER 9, SECTION 907.
 UPON COMPLETION OF THE INSTALLATION OF THE FIRE PROTECTIVE SIGNALING EQUIPMENT, A SATISFACTORY TEST OF THE ENTIRE SYSTEM SHALL BE MADE IN THE PRESENCE OF THE AUTHORITY HAVING JURISDICTION, NFPA 72, IF TESTING RESULTS DETERMINE FIRE ALARM AUDIBILITY DOES NOT MEET 15db OVER AMBIENT NOISE LEVELS. ADDITIONAL FIRE ALARM SIGNALING DEVICES MAY BE REQUIRED BY THE AUTHORITY HAVING JURISDICTION.
 FIRE ALARM SYSTEM CERTIFICATION AND DESCRIPTION SHALL BE PROVIDED FOR TESTING AND A PLASTIC LAMINATED COPY SHALL REMAIN (WITH INSTRUCTIONS) AT THE FIRE ALARM CONTROL PANEL PER NFPA 72.
 THE FIRE ALARM "RECORD OF COMPLETION" FORM, FIGURE 10, 18, 2, 1 IN NFPA 72, SHALL BE COMPLETED, SIGNED AND SUBMITTED TO THE SCHOOL DISTRICT AND THE LOCAL AUTHORITY (K.C.F.D.) HAVING JURISDICTION AT THE COMPLETION OF THE TEST.

FIRE ALARM LEGEND



Know what's below.
 Call before you dig.

CONSTRUCTION DOCUMENTS