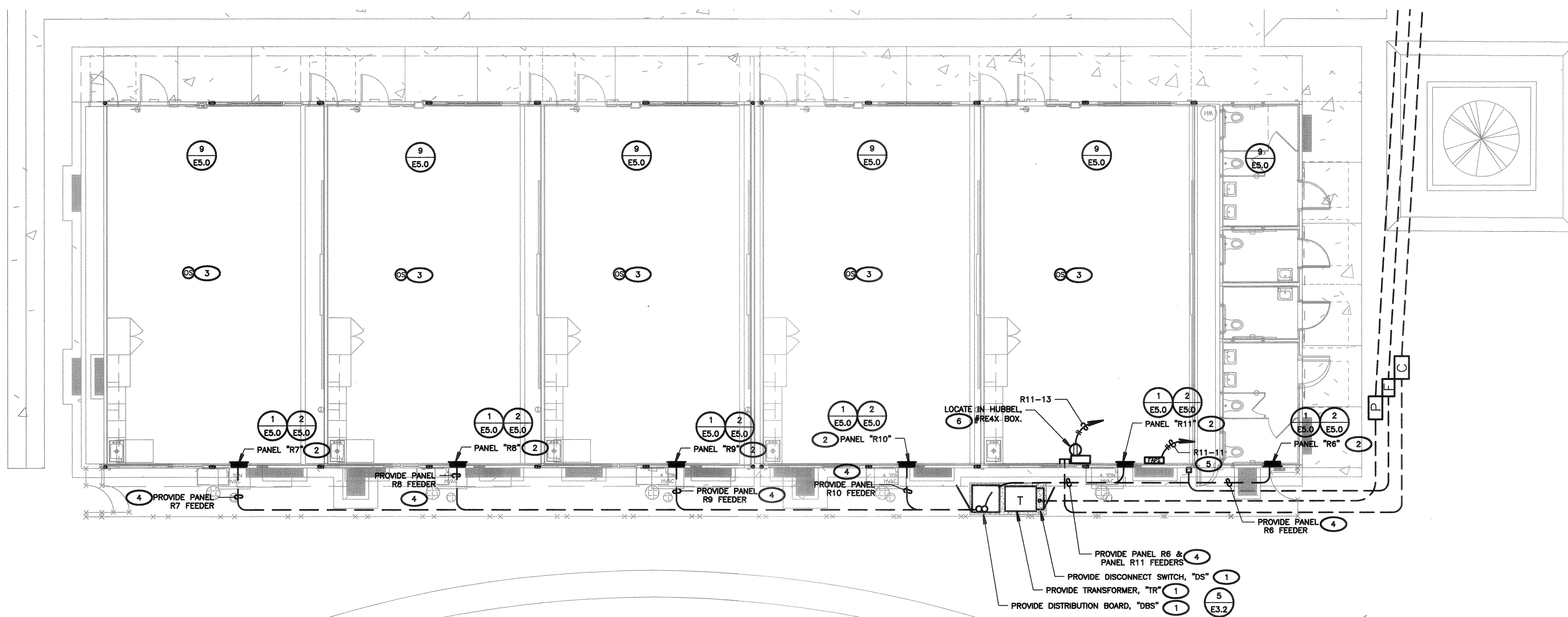


1 RELO SIGNAL PLAN (A101-A106)
SCALE: 1/8"=1'-0"



2 RELO POWER PLAN (A101-A106)
SCALE: 1/8"=1'-0"

- SIGNAL PLAN KEY NOTES**
(NOTE: THESE NOTES MAY NOT APPEAR ON ALL SHEETS)
- 1 PROVIDE 2" CO SLEEVE WITH PLASTIC BUSHINGS AT BOTH ENDS IN ACCESSIBLE CEILING SPACE.
 - 2 PROVIDE (2) 2" CO SLEEVE WITH PLASTIC BUSHINGS AT BOTH ENDS IN ACCESSIBLE CEILING SPACE.
 - 3 PROVIDE PATCH PANELS IN #REAX BOX & TERMINATE ALL DATA CABLES.
 - 4 PROVIDE ALL REQUIRED WORK & MATERIALS IN ORDER TO CONNECT 6 STRAND MULTIMODE FIBER.

- POWER PLAN KEY NOTES**
(NOTE: THESE NOTES MAY NOT APPEAR ON ALL SHEETS)
- 1 REFER TO SINGLE LINE DIAGRAM
 - 2 BRANCH CIRCUIT LOAD CENTER PROVIDED BY MODULAR CLASSROOM MANUFACTURER. SEE MODULAR CLASSROOM SHOP DRAWINGS FOR PANEL SCHEDULE. VERIFY LOCATION & PROVIDE CONNECTION PER VENDOR'S SHOP DRAWINGS.
 - 3 PROVIDE ALL NECESSARY WORK & MATERIALS IN ORDER TO INTERCEPT EXISTING LIGHTING BRANCH CIRCUIT TO PROVIDE TITLE 24 COMPLIANT OCCUPANCY SENSOR CONTROL. PROVIDE ALL REQUIRED RELAYS, POWER PACKS, & SENSORS FOR A COMPLETE SYSTEM.
 - 4 FOR FEEDER INFORMATION REFER TO SINGLE LINE DIAGRAM.
 - 5 PROVIDE (1) 20/1P CIRCUIT BREAKER IN EXISTING SPACE OR USE SPARE 20/1P CIRCUIT BREAKER. THE CIRCUIT BREAKER SHALL HAVE A RED MARKING & BE IDENTIFIED AS "FIRE ALARM CIRCUIT CONTROL". PROVIDE A LOCK-ON DEVICE ON THE CIRCUIT BREAKER HANDLE. CIRCUIT BREAKER SHALL BE PERMANENTLY IDENTIFIED AT THE "FACP" & "EVAC". PROVIDE SURGE SUPPRESSORS ON THE INPUT OF CONTROL PANELS, EXCEPT FOR CONTROL PANELS WITH BUILT-IN SURGE SUPPRESSORS.
 - 6 PROVIDE TVSS TYPE 120V/20A RECEPTACLE. LOCATE IN RE4 XBOX.

- POWER SHEET NOTES**
1. CONTRACTOR SHALL VERIFY LOCATION & REQUIREMENTS OF ALL DEVICES REQUIRING ELECTRICAL CONNECTION PRIOR TO BID PROPOSAL, ROUGH-IN AND FINISH.
 2. CONTRACTOR SHALL, IN ROUTING ALL CIRCUITS, INCREASE CONDUCTOR & CONDUIT SIZE TO ALLOW FOR VOLTAGE DROP SHOULD THE CONTRACTOR EXCEED ROUTING INDICATED ON DRAWINGS. ENGINEER OF RECORD MUST BE NOTIFIED PRIOR TO ANY DEVIATIONS FROM APPROVED PLAN CHECK (PERMIT SET) DRAWINGS.
 3. COORDINATE WORK WITH OTHER TRADES. OBTAIN ALL DRAWINGS THAT WILL REQUIRE COORDINATION AND PROVIDE ALL ELECTRICAL CONNECTIONS, DEVICES, AND WIRING REQUIRED WHETHER SHOWN ON THE ELECTRICAL DRAWINGS OR NOT.
 4. CONTRACTOR SHALL FURNISH AND INSTALL PULL BOXES AS REQUIRED TO INSTALL CONDUCTORS PER CONDUCTOR MANUFACTURERS RECOMMENDATIONS, PER THE NATIONAL ELECTRICAL CODE, AND PER LOCAL AUTHORITIES HAVING JURISDICTION.
 5. 3/4" CONDUIT MINIMUM, UON.
 6. PROVIDE CODE SIZED EQUIPMENT GROUNDING CONDUCTORS IN ALL OCCUPIED CONDUITS.
 7. PROVIDE CONTROLS FOR MECHANICAL EQUIPMENT PER MECHANICAL DOCUMENTS. VERIFY LOCATION AND REQUIREMENTS OF MECHANICAL EQUIPMENT ON MECHANICAL DOCUMENTS.
 8. VERIFY LOCATION OF ALL DEVICES ON ARCHITECTURAL PLANS.
 9. ALL CONDUIT RUNS SHALL BE CONCEALED IN WALLS OR ROUTED ABOVE THE CEILING/ACCESSIBLE CEILING SPACE.
 10. ALL PENETRATIONS THROUGH FIRE RATED WALLS SHALL BE PROTECTED FROM THE SPREAD OF FIRE WITH AN APPROVED FIRESTOP SYSTEM EQUAL TO OR GREATER THAN THE RATING OF THE WALL.
 11. MOUNTING HEIGHT OF ALL RECEPTACLES AT COUNTER TOPS SHALL BE VERIFIED WITH OWNER/ARCHITECT PRIOR TO ROUGH-IN.
 12. PROVIDE GFCI TYPE RECEPTACLE WITHIN 6 FEET OF ANY SINK.
 13. CONTRACTOR SHALL PROVIDE A PERMANENT MARKING IN ORDER TO DIFFERENTIATE OCCUPANCY CONTROLLED RECEPTACLES FROM THE UNCONTROLLED RECEPTACLES. VERIFY ACCEPTABLE MEANS OF PERMANENT MARKING WITH THE AIA.



Know what's below.
Call before you dig.

PRIME CONSULTANT

IBI ARCHITECTURE PLANNING

San Luis Obispo
4119 Broad Street, Suite 210
San Luis Obispo, CA 93401
805.546.0433 fax: 805.546.0504
ibigroup.com



COPYRIGHT:
Any reproduction or distribution for any purpose other than authorized by IBI Group is forbidden.

COPYRIGHT 2017 IBI GROUP

REVISIONS

NO.	DATE	APPRD.	DESCRIPTION

CONSULTANT

FERRANTI ENGINEERING

CONSULTING ELECTRICAL ENGINEERS
1211 MARICOPA HWY,
SUITE 250
OJAI, CA 93023
(805) 705-4772
DALEFERRANTI@LIVE.COM

AGENCY INFORMATION:

AGENCY TRACKING NO. 63321-241
FILE NO. 15-6

IDENTIFICATION STAMP
DIV. OF THE STATE ARCHITECT
OFFICE OF REGULATION SERVICES

03-118380
AC FLS JC SS CL
DATE OCT 25 2017

BAKERSFIELD CITY SCHOOL DISTRICT

BESSIE OWENS INTERMEDIATE RELOCATABLES A101 - A106

815 EUREKA ST. BAKERSFIELD CA, 93305

OPSC or OSHPD PROJ. NO.

PROJECT NO: 16241.000

DRAWN BY: VZ

CHKD BY: DF

ISSUE DATE: 8/29/2017

SHEET TITLE

RELO SIGNAL PLAN AND RELO POWER PLAN

SHEET NUMBER

E2.3

CONSTRUCTION DOCUMENTS