

PRIME CONSULTANT

IBI ARCHITECTURE PLANNING
 San Luis Obispo
 4119 Broad Street, Suite 210
 San Luis Obispo, CA 93401
 805.546.0433 fax: 805.546.0504
 ibigroup.com

SEAL



COPYRIGHT: Any reproduction or distribution for any purpose other than authorized by IBI Group is forbidden.

COPYRIGHT 2017 IBI GROUP

REVISIONS

NO.	DATE	APPRD.	DESCRIPTION
-----	------	--------	-------------

CONSULTANT
FERRANTI ENGINEERING
 CONSULTING ELECTRICAL ENGINEERS
 1211 MARICOPA HWY, SUITE 250
 OJAI, CA 93023
 (805) 705-4772
 DALEFERRANTI@LIVE.COM

AGENCY INFORMATION:

AGENCY TRACKING NO. 63321-241
 FILE NO. 15-6

IDENTIFICATION STAMP
 DIV. OF THE STATE ARCHITECT
 OFFICE OF REGULATION SERVICES
03-118380
 AC. FLS. J.E. SS. CL.
 DATE OCT 25 2017

BAKERSFIELD CITY SCHOOL DISTRICT



BESSIE OWENS INTERMEDIATE RELOCATABLES A101 - A106

815 EUREKA ST. BAKERSFIELD CA, 93305

OPSC or OSHPD PROJ. NO:

PROJECT NO: 16241.000

DRAWN BY: VZ

CHKD BY: DF

ISSUE DATE: 8/29/2017

SHEET TITLE

PARTIAL SITE ELECTRICAL PLAN (NORTH)

SHEET NUMBER

E2.2

LIGHTING SHEET NOTES

- CONTRACTOR SHALL VERIFY LOCATION, CEILING TYPE, TRIM, AND REQUIREMENTS OF ALL LIGHT FIXTURES AND CONTROL PRIOR TO BID PROPOSAL, ROUGH-IN AND FINISH INSTALLATION.
- CONTRACTOR SHALL, IN ROUTING ALL CIRCUITS, INCREASE CONDUIT & CONDUIT SIZE TO ALLOW FOR VOLTAGE DROP SHOULD THE CONTRACTOR EXCEED ROUTING INDICATED ON DRAWINGS. ENGINEER OF RECORD MUST BE NOTIFIED PRIOR TO ANY DEVIATIONS FROM APPROVED PLAN CHECK (PERMIT SET) DRAWINGS.
- CONTRACTOR SHALL FURNISH AND INSTALL PULL BOXES AS REQUIRED TO INSTALL CONDUCTORS PER CONDUCTOR MANUFACTURER'S RECOMMENDATIONS, PER THE NATIONAL ELECTRICAL CODE, AND PER LOCAL AUTHORITIES HAVING JURISDICTION.
- 3/4" CONDUIT MINIMUM, UNLESS OTHERWISE NOTED.
- ALL LIGHTING FIXTURES SHALL BE SECONDARILY SUPPORTED WITH SAFETY CABLES, PROVIDED BY CONTRACTOR.
- VERIFY LOCATION OF ALL DEVICES ON ARCHITECTURAL PLANS.
- MAINTAIN A MAXIMUM 2% VOLTAGE DROP ON ALL LIGHTING HOMERUNS.
- ALL EXIT SIGNS ARE +12" TO CENTER LINE OF FIXTURE ABOVE DOOR FRAME UNLESS OTHERWISE NOTED.
- CONTRACTOR SHALL PROVIDE ALL BACKING BRACKETS, SUPPORTS, AND MOUNTING HARDWARE NECESSARY TO PROPERLY INSTALL LIGHTING FIXTURES.
- VERIFY THE EXACT ROUTING OF ALL EXPOSED CONDUIT WITH OWNER PRIOR TO INSTALLATION.
- COORDINATE WORK WITH OTHER TRADES. OBTAIN ALL DRAWINGS THAT WILL REQUIRE COORDINATION AND PROVIDE ALL ELECTRICAL CONNECTIONS, DEVICES, AND WIRING REQUIRED WHETHER SHOWN ON THE ELECTRICAL DRAWINGS OR NOT.
- PROVIDE CODE SIZED EQUIPMENT GROUNDING CONDUCTOR IN ALL LIGHTING SYSTEM CONDUITS.
- GRAPHICS / SIGNAGE VERIFY & PROVIDE CONNECTION TO SIGNAGE PER VENDOR'S SHOP DRAWINGS. VERIFY SIGN LOCATION, MOUNTING ELEVATION AND BRANCH CIRCUIT REQUIREMENTS PRIOR TO ROUGH-IN.
- ALL LIGHTING FIXTURES, EXCEPT EMERGENCY, SHALL BE CONTROLLED BY CONTRACTOR PROVIDED AUTOMATIC LIGHTING CONTROL SYSTEM AS REQUIRED BY STATE OF CALIFORNIA TITLE 24 REGULATIONS.
- PROVIDE ALL REQUIRED DEVICE COVER PLATES.

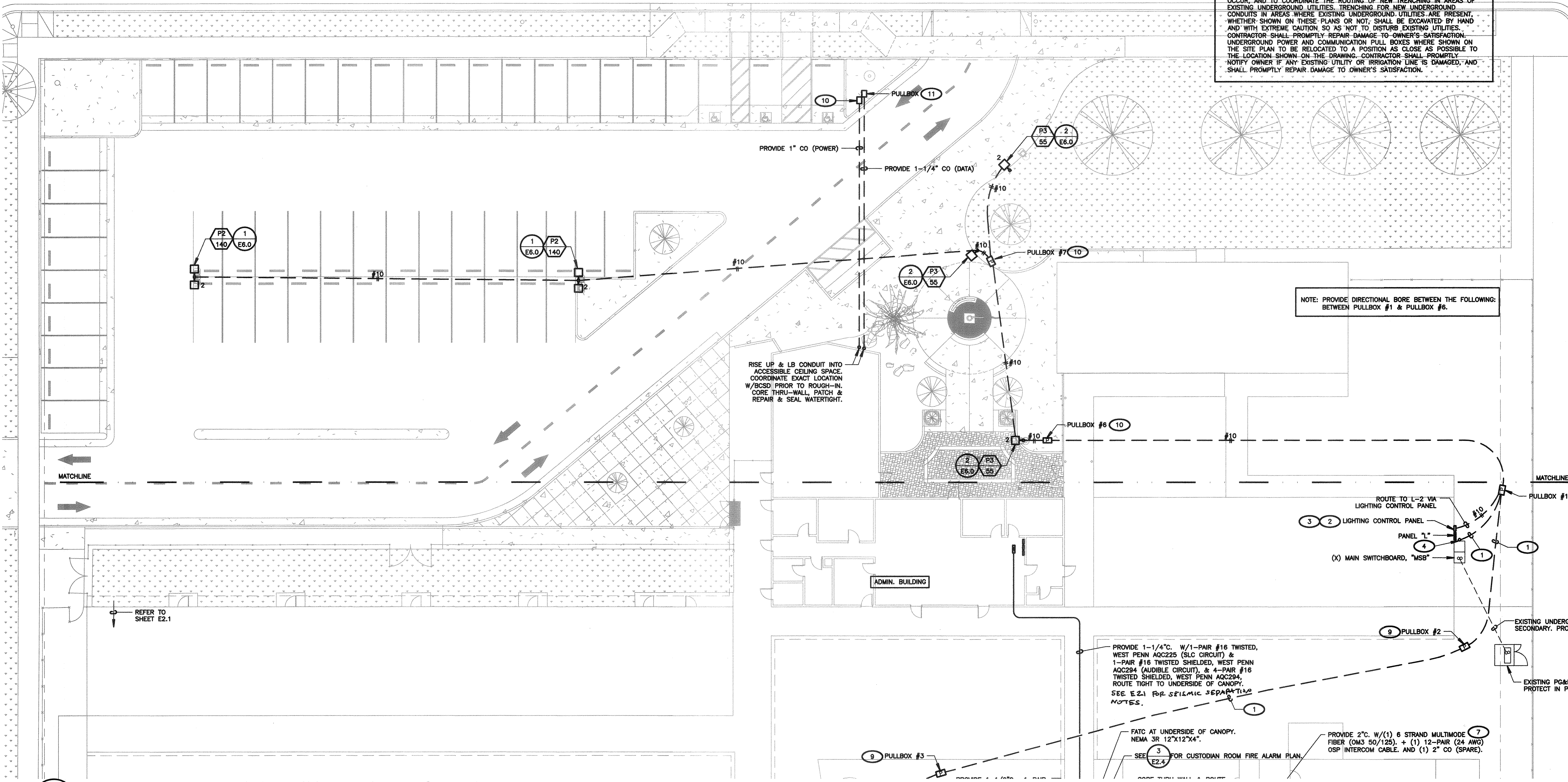
KEY NOTES

(NOTE: THESE NOTES MAY NOT APPEAR ON ALL SHEETS)

- PROVIDE POWER FEEDER. REFER TO SINGLE LINE DIAGRAM FOR FEEDER INFORMATION.
- PROVIDE DOUGLAS LIGHTING CONTROLS, #WPAK-33518-S.
- PROVIDE DOUGLAS LIGHTING CONTROLS, #NEMA 4 ENCLOSURE, FOR LCP.
- RISE UP & LB POWER FEEDER INTO SIDE OF EXISTING MAIN SWITCHBOARD. REFER TO SINGLE LINE DIAGRAM FOR FEEDER INFORMATION.
- PROVIDE 13"x24" TRAFFIC RATED PULLBOX WITH STEEL CHECKER PLATE COVER ENGRAVED WITH "COMMUNICATIONS", CHRISTY CONCRETE, #B1324BOX WITH #B1324-51JH COVER.
- PROVIDE 10"x17" TRAFFIC RATED PULLBOX WITH STEEL CHECKER PLATE COVER ENGRAVED WITH "FIRE ALARM", CHRISTY CONCRETE, #B1017BOX WITH #B1017-51JH COVER.
- ROUTE IN ACCESSIBLE CEILING SPACE.
- DROP CONDUIT DOWN ALONGSIDE STEEL SUPPORT COLUMN ATTACHED TO CANOPY. PROVIDE ALL REQUIRED SUPPORTS, UNISTRUT ASSEMBLIES, ETC. TO TRANSITION CONDUIT & CABLES IN-GRADE, AS SHOWN. VERIFY EXACT LOCATION IN THE FIELD.
- REFER TO SINGLE LINE DIAGRAM FOR PULLBOX SPECIFICATION.
- PROVIDE 10"x17" TRAFFIC RATED PULLBOX WITH STEEL CHECKER PLATE COVER ENGRAVED WITH "ELECTRIC", CHRISTY CONCRETE, #B1017BOX WITH #B1017-51JH COVER.
- PROVIDE 10"x17" TRAFFIC RATED PULLBOX WITH STEEL CHECKER PLATE COVER ENGRAVED WITH "COMMUNICATIONS", CHRISTY CONCRETE, #B1017BOX WITH #B1017-51JH COVER.

NOTE: IT IS THE CONTRACTOR'S RESPONSIBILITY TO REVIEW ALL CIVIL ENGINEERING DRAWINGS AND SITE AS-BUILTS (OBTAIN FROM OWNER) TO IDENTIFY THE LOCATION AND ROUTING OF ALL EXISTING UNDERGROUND UTILITIES, METERS, DRAINS, LANDSCAPING AND STRUCTURAL OBSTACLES PRIOR TO TRENCHING AND CONDUIT DUCT BANK ROUTING. THE CONTRACTOR SHALL CONDUCT AN UNDERGROUND SCAN OF THE CORRIDOR WHERE NEW TRENCHING SHALL OCCUR, AND TO COORDINATE THE ROUTING OF NEW UNDERGROUND EXISTING UNDERGROUND UTILITIES. TRENCHING FOR NEW UNDERGROUND CONDUITS IN AREAS WHERE EXISTING UNDERGROUND UTILITIES ARE PRESENT, WHETHER SHOWN ON THESE PLANS OR NOT, SHALL BE EXCAVATED BY HAND AND WITH EXTREME CAUTION SO AS NOT TO DISTURB EXISTING UTILITIES. CONTRACTOR SHALL PROMPTLY REPAIR DAMAGE TO OWNER'S SATISFACTION. UNDERGROUND POWER AND COMMUNICATION PULL BOXES WHERE SHOWN ON THE SITE PLAN TO BE RELOCATED TO A POSITION AS CLOSE AS POSSIBLE TO THE LOCATION SHOWN ON THE DRAWING. CONTRACTOR SHALL PROMPTLY NOTIFY OWNER IF ANY EXISTING UTILITY OR IRRIGATION LINE IS DAMAGED, AND SHALL PROMPTLY REPAIR DAMAGE TO OWNER'S SATISFACTION.

NOTE: PROVIDE DIRECTIONAL BORE BETWEEN THE FOLLOWING: BETWEEN PULLBOX #1 & PULLBOX #6.



1 PARTIAL SITE ELECTRICAL PLAN (NORTH)
 SCALE: 1/16"=1'-0"

LIGHT FIXTURE SCHEDULE

TYPE	LAMPS		VOLTS	MOUNTING	DESCRIPTION	REMARKS
	WATTS	No				
P2 140	LED			BEACON	VPS-30NB-70-4K-T4-UNV-BSP	DOUBLE HEAD POLE-MOUNT 5 1 4 2
P3 55	LED			BEACON	VPS-24NB-55-4K-T4-UNV-BSP-RA	SINGLE HEAD POLE MOUNT 1 6

- FIXTURE SCHEDULE NOTES:**
- CONTRACTOR SHALL BE RESPONSIBLE FOR ORDERING PROPER TYPES OF TRIMS FOR ALL RECESSED FLUORESCENT FIXTURES TO FIT THE CEILING BEING INSTALLED.
 - ALL BALLASTS SHALL BE ELECTRONIC SOLID STATE.
 - FIXTURES TYPE IN CONTACT WITH INSULATION SHALL HAVE U.L. LISTED THERMAL BARRIER.
 - CONTRACTOR SHALL VERIFY THE TYPE OF CEILING BEFORE ORDERING NEW FIXTURES. CONTRACTOR IS FULLY RESPONSIBLE TO PROVIDE ALL MOUNTING BRACKETS TO FIT CEILING CONDITIONS AT NO EXTRA CHARGE TO THE OWNER.
 - SEE ARCHITECTURAL PLANS FOR EXACT DIMENSIONS AND CEILING CONFIGURATION.

LIGHTING FIXTURE SCHEDULE KEY NOTES

- (NOTE: THESE NOTES MAY NOT APPEAR ON ALL SHEETS)
- CONTRACTOR SHALL VERIFY COLOR/FINISH WITH ARCHITECT PRIOR TO ORDERING.
 - TWO LIGHT FIXTURE HEADS SHALL BE PROVIDED.
 - PROVIDE 20 FT. SQUARE STRAIGHT ALUMINUM POLE WITH VIBRATION DAMPENER, BEACON, #SSA-B-20-40-B-1-84-BMT-EHH-VM1. CONTRACTOR SHALL VERIFY COLOR/FINISH WITH ARCHITECT PRIOR TO ORDERING.
 - CONTRACTOR SHALL SET TIME DELAY FOR PROGRAMMABLE MOTION CONTROL TO 30 MINUTES & DISABLE THE FULL SHUT OFF FEATURE. WHEN MOTION HAS NOT BEEN DETECTED FOR 30 MINUTES, THE LIGHTING POWER SHALL BE REDUCED BY 40%. CONTRACTOR SHALL PROVIDE "SCP REMOTE" IN ORDER TO PROGRAM LIGHT FIXTURE IN THE FIELD.
 - PROVIDE 18 FT. SQUARE STRAIGHT ALUMINUM POLE WITH VIBRATION DAMPENER, BEACON, #SSA-B-18-40-B-2-84-XXX-EHH-VM1. CONTRACTOR SHALL VERIFY COLOR/FINISH WITH ARCHITECT PRIOR TO ORDERING.
 - PROVIDE 13 FT. SQUARE STRAIGHT ALUMINUM POLE WITH VIBRATION DAMPENER, BEACON, #SSA-B-13-40-B-1-84-XXX-EHH-VM1. CONTRACTOR SHALL VERIFY COLOR/FINISH WITH ARCHITECT PRIOR TO ORDERING.



Know what's below.
 Call before you dig.

CONSTRUCTION DOCUMENTS