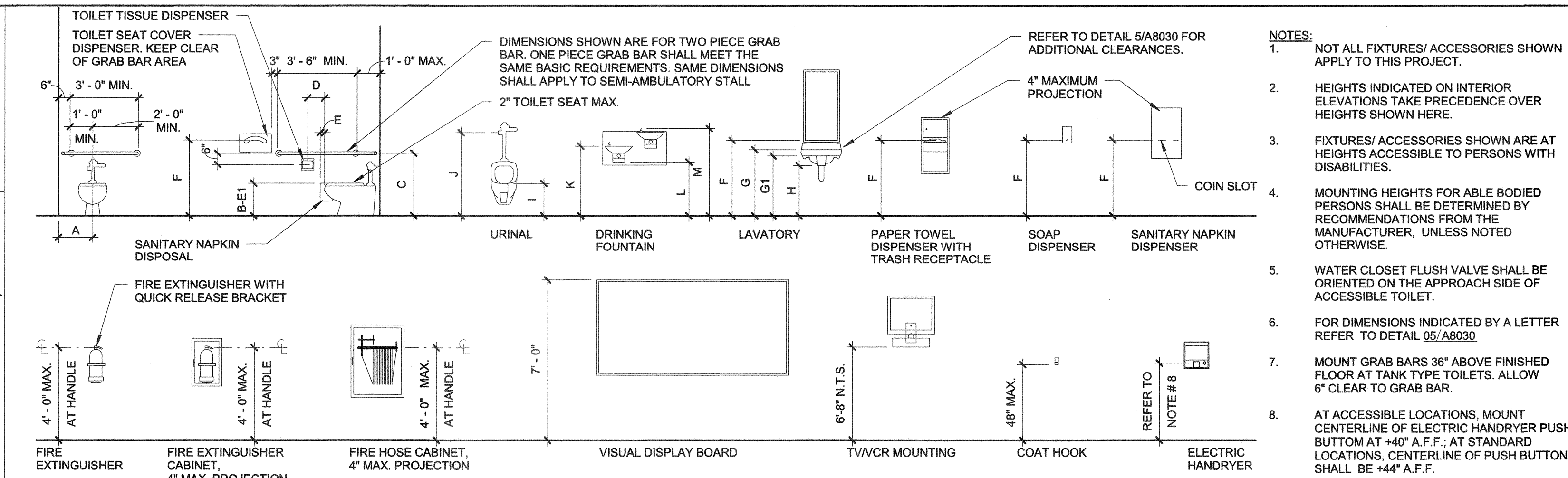


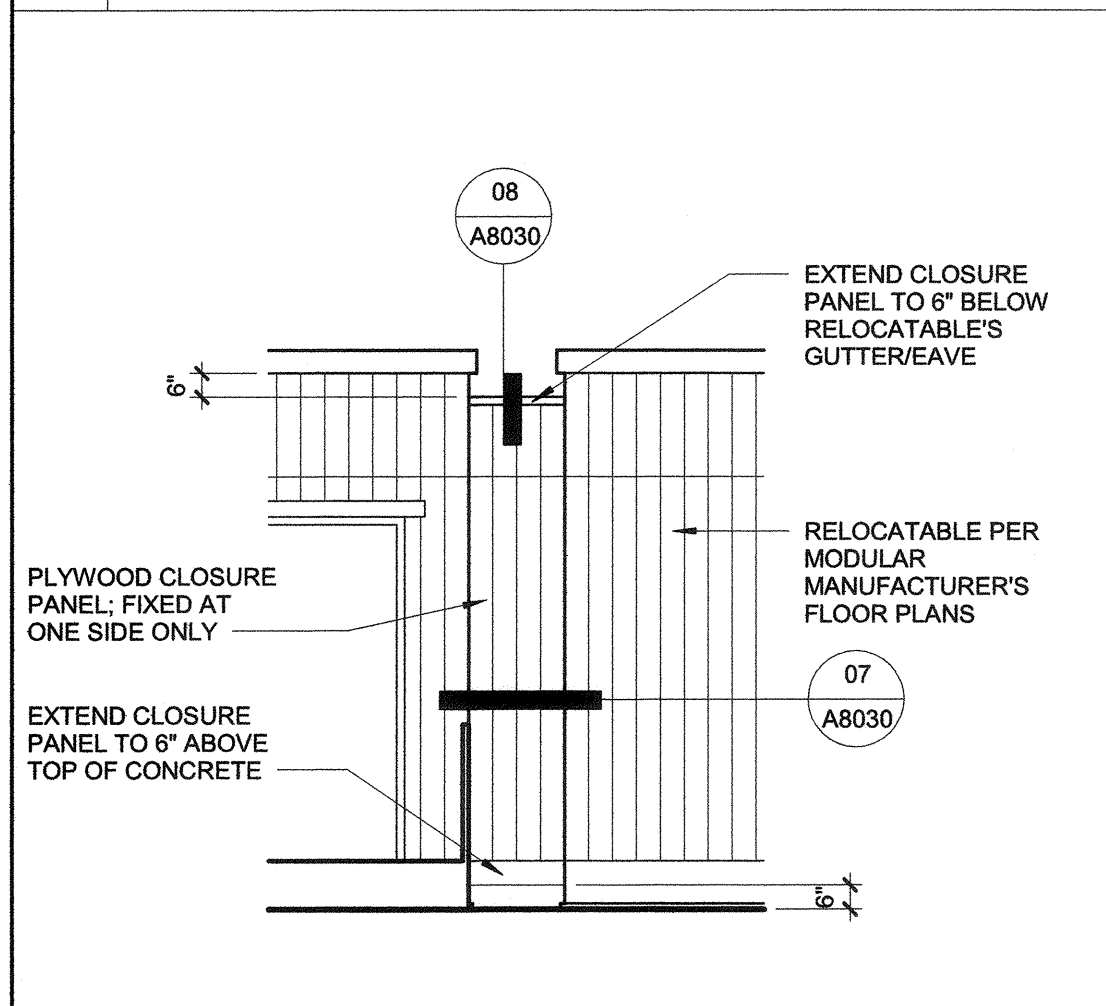
**01 THRESHOLD** 6" = 1'-0"



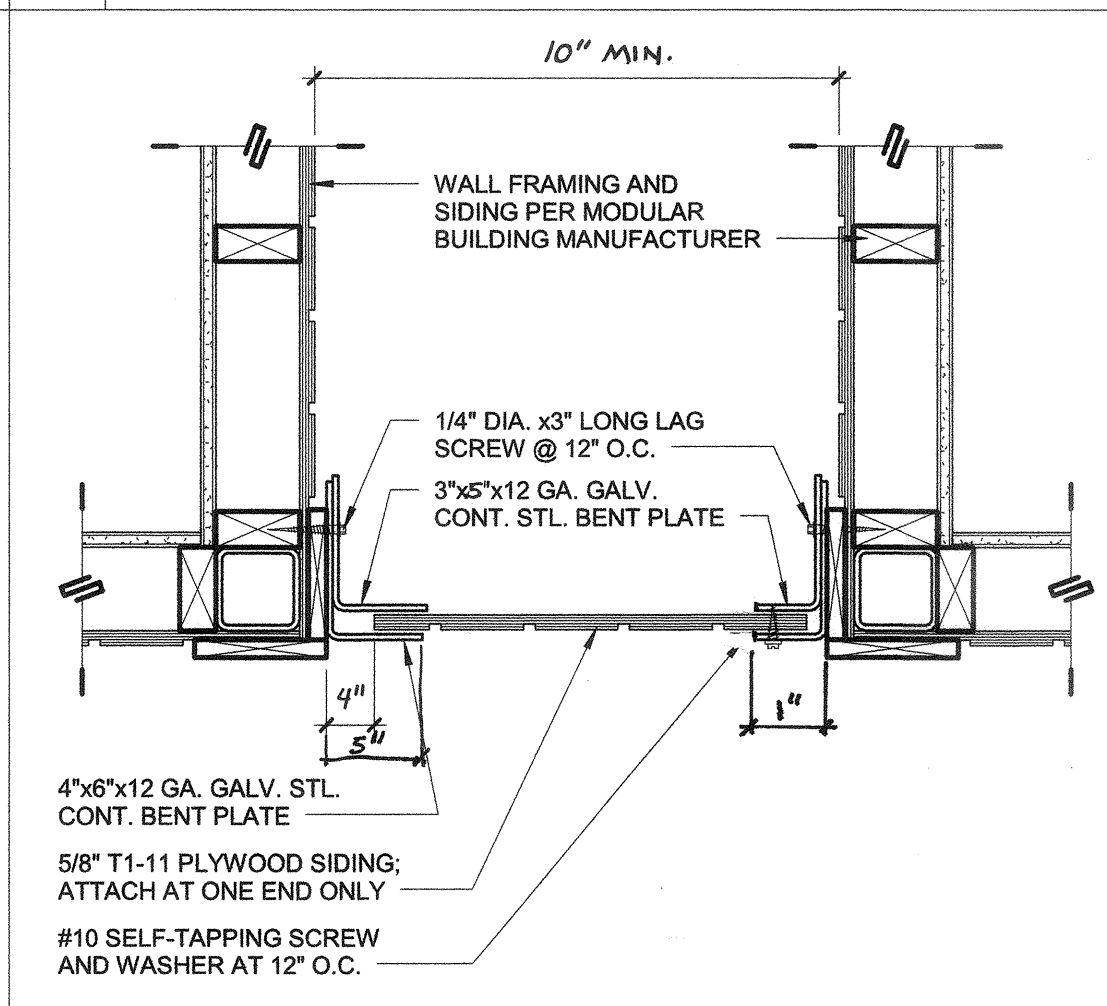
**02 ACCESSIBLE MOUNTING HEIGHTS** 1/4" = 1'-0"

LETTER	DESCRIPTION	ADULT	ELEM.	KINDER
A	FROM WALL TO CENTERLINE OF TOILET	17" - 18"	15"	12"
B	TOILET SEAT HEIGHT (TO TOP OF SEAT)	17" - 19"	15"	10" - 12"
C	GRAB BAR HEIGHT	33" - 36" TOP	27"	20" - 22"
D	TOILET TISSUE DISPENSER TO TOILET	7" - 9" C	6" MAX.	6" MAX.
E	SANITARY NAPKIN DISPOSAL TO TOILET	12" MAX.	12" MAX.	N/A
E1	SANITARY NAPKIN DISPOSAL FROM FLOOR TO TOP	17" - 19"	15"	N/A
F	DISPENSER OR MIRROR TO REFLECTIVE SURFACE	40" MAX.	36" MAX.	32" MAX.
G	LAVATORY SINK HEIGHT	34" MAX.	31" MAX.	26" MAX.
G1	LAVATORY APRON CLEARANCE	29" MIN.	26" MIN.	21" MIN.
H	KNEE CLEARANCE	27" MIN.	24" MIN.	19" MIN.
I	URINAL RIM HEIGHT	13" - 17"	13" - 15"	13" - 15"
J	URINAL FLUSH HANDLE HEIGHT	44" MAX.	37" MAX.	32" MAX.
K	DRINKING FOUNTAIN BUBBLER HEIGHT	36" MAX.	32" MAX.	30" MAX.
L	DRINKING FOUNTAIN KNEE CLEARANCE	27" MIN.	24" MIN.	22" MIN.
M	D.F. BUBBLER HEIGHT (STANDING UNIT)	38" - 43"		

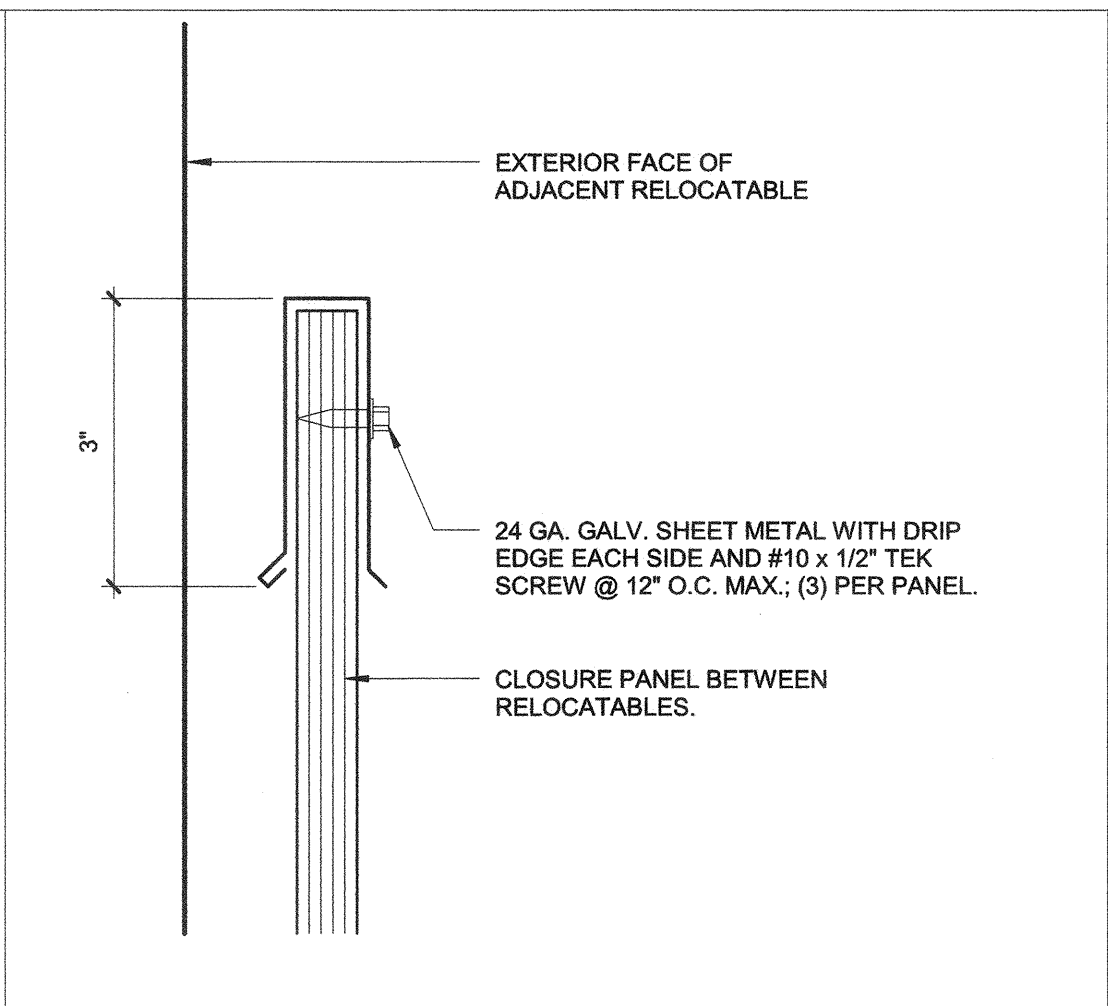
**05 MOUNTING HEIGHTS** 1/4" = 1'-0"



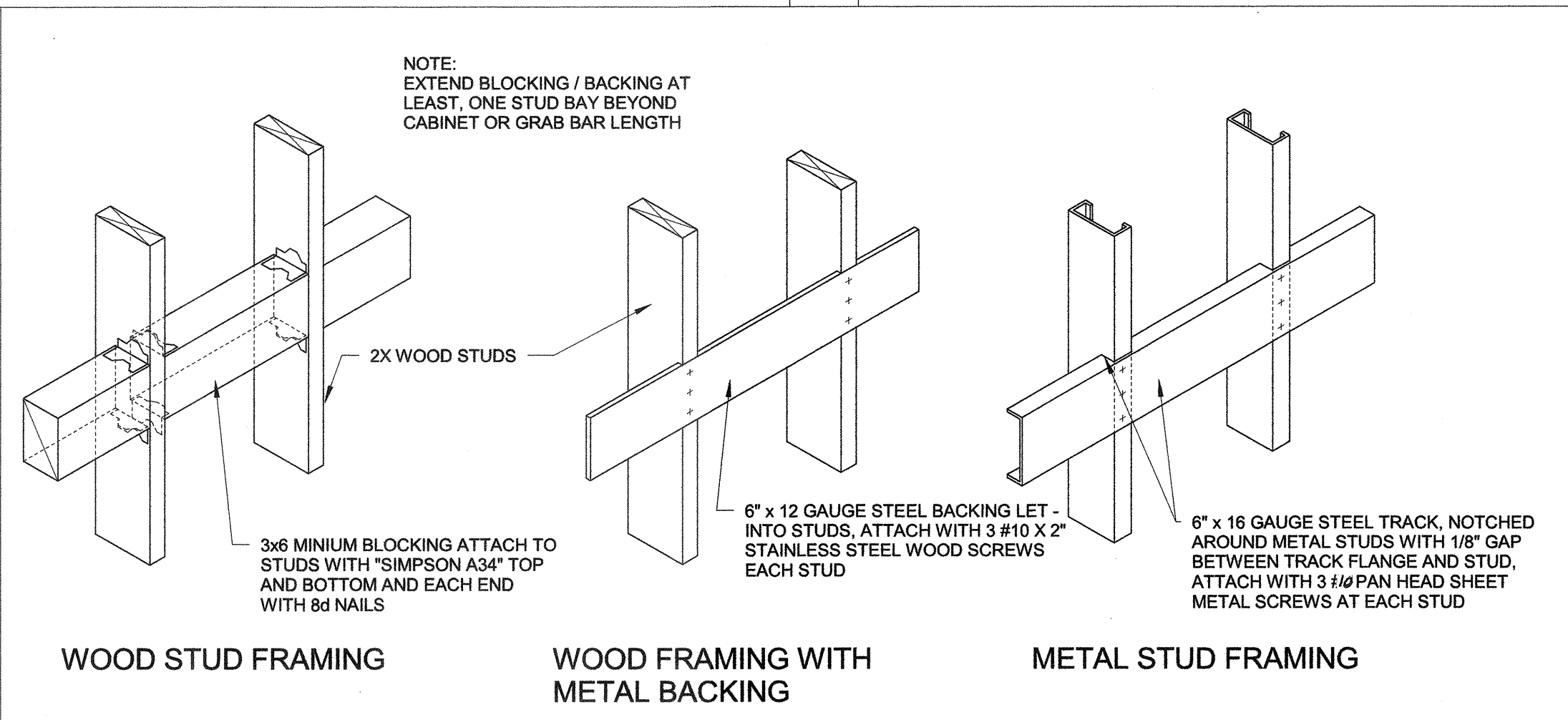
**06 CLOSURE PANEL** 1/4" = 1'-0"



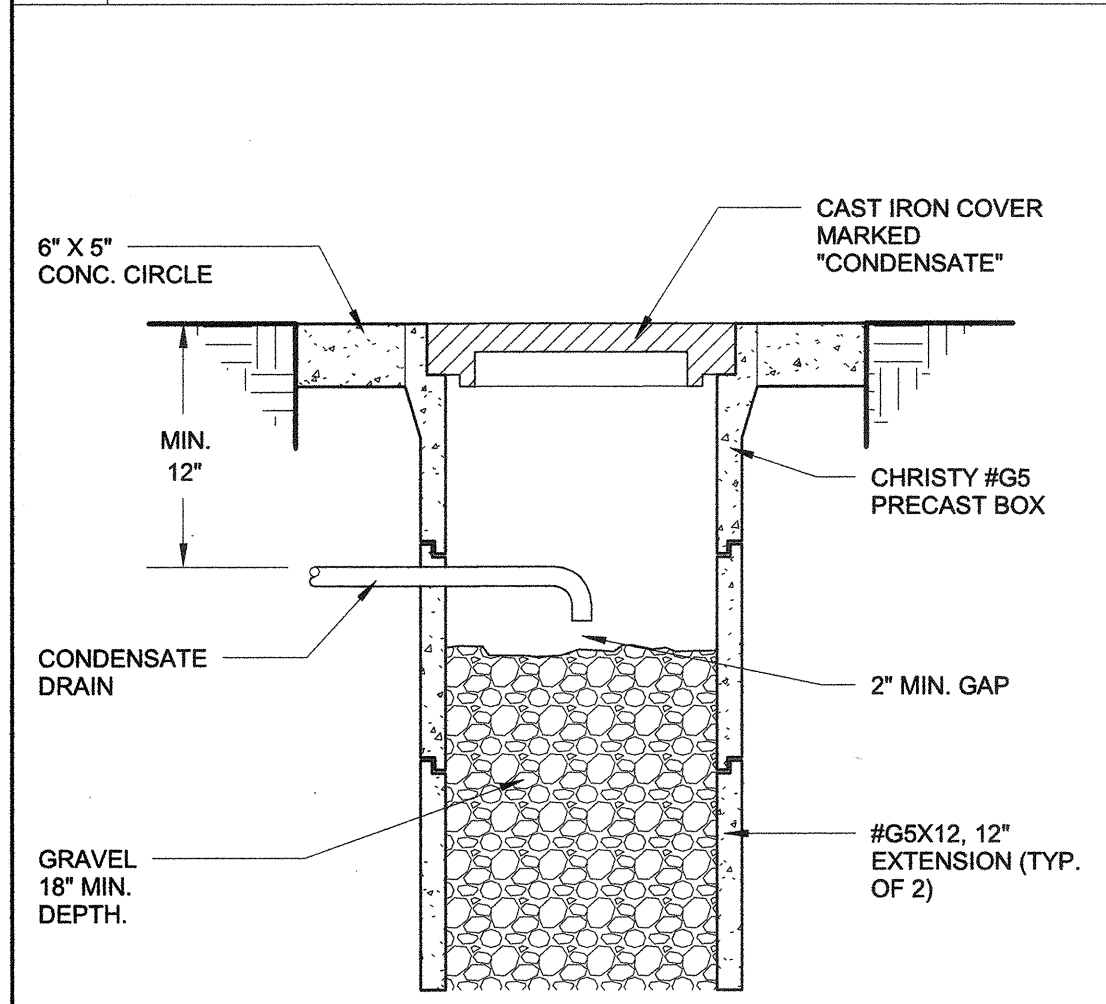
**07 PANEL PLAN** 1 1/2" = 1'-0"



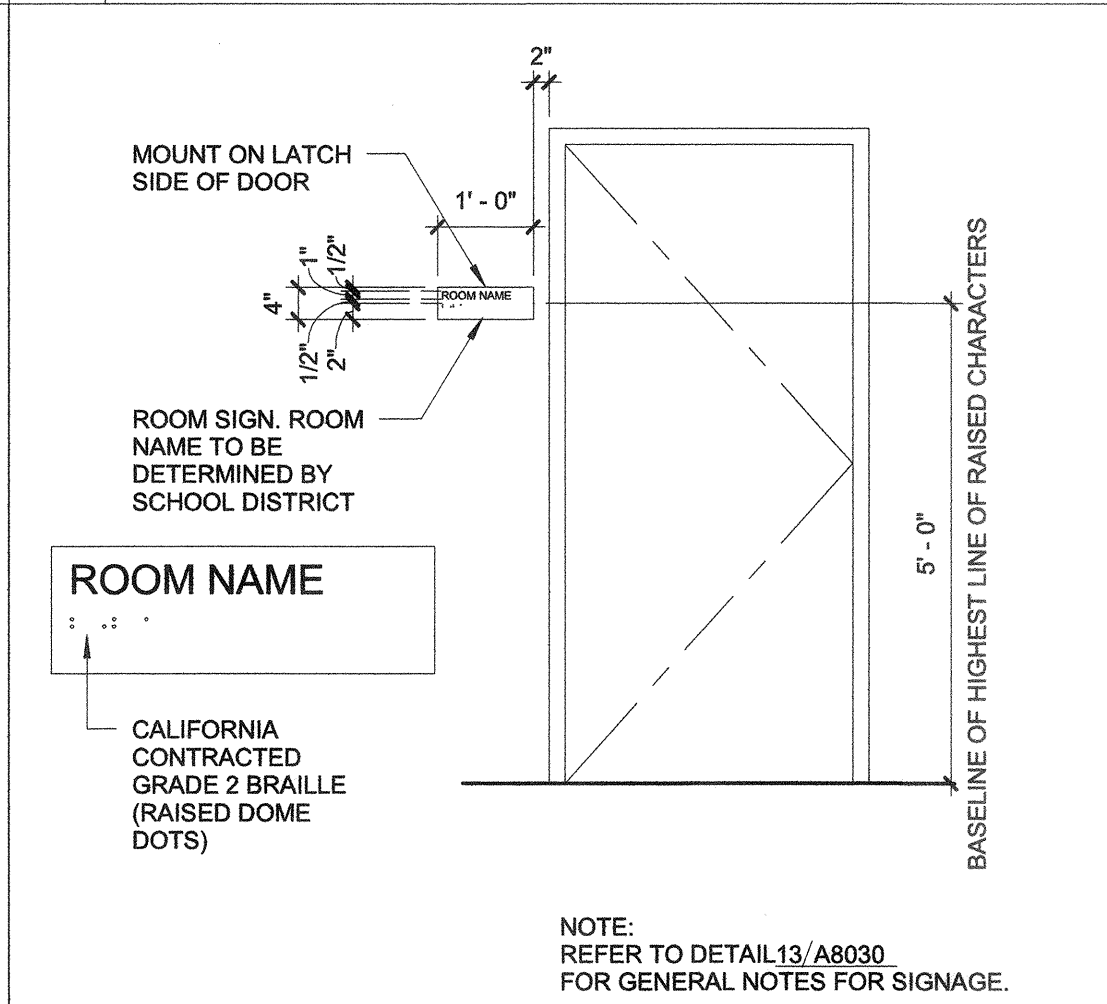
**08 PANEL CAP** 6" = 1'-0"



**09 BLOCKING** 1" = 1'-0"



**11 DRY WELL** 12" = 1'-0"

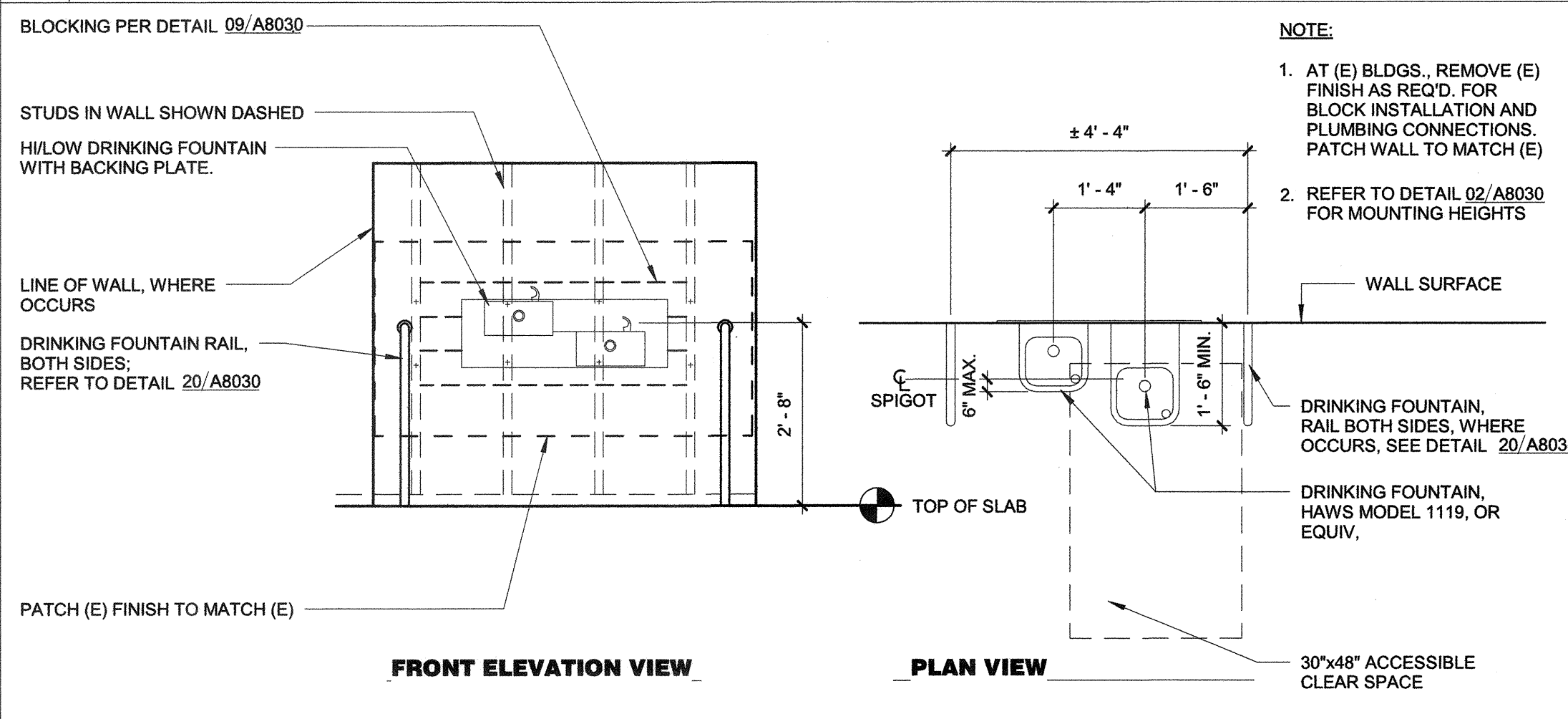


**12 ROOM SIGNAGE** 1/2" = 1'-0"

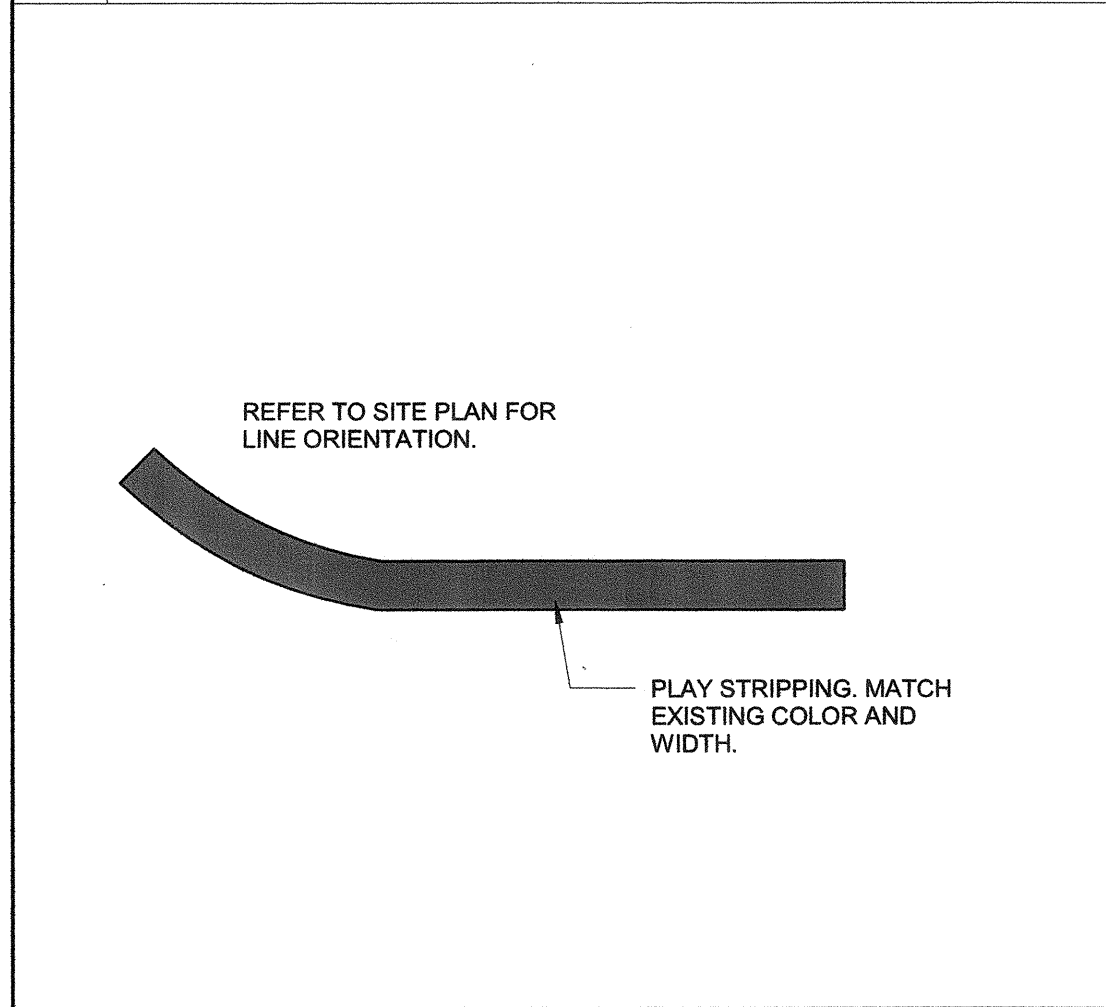
**NOTES APPLICABLE TO BLDG SIGNAGE DETAILS 12/A8030**

- ALL SYMBOLS AND LETTERS TO BE RAISED 1/32" ABOVE SIGN/PLAQUE SURFACE TYP. (U.O.N.) AND SHALL BE AN INTEGRAL PART OF THE SIGN.
- CONTRAST BETWEEN SYMBOLS, LETTERS, CHARACTERS AND BACKGROUND MUST BE 70% MIN.
- ALL SIGNS TO HAVE A COLOR WHICH CONTRASTS 70% MIN. WITH DOOR COLOR.
- ALL PLAQUES TO HAVE A COLOR WHICH CONTRASTS WITH THE WALL ADJACENT TO THE LATCH SIDE OF THE DOOR.
- REFER TO ABOVE DETAIL ACCESSIBILITY SIGN(S) LOCATION AND ELEVATION FOR SIGN/PLAQUE LOCATION INFORMATION.
- CALIFORNIA GRADE 2 BRAILLE DOTS SHALL BE 1/10" (2.54mm) ON CENTERS IN EACH CELL WITH 2/10" (5.08 mm) SPACE BETWEEN CELLS DOMES DOTS SHALL BE RAISED A MIN. OF 1/40" (0.635 mm) ABOVE THE BACKGROUND.
- ALL SIGNS AND IDENTIFICATION SHALL COMPLY WITH TITLE 24, SECTION 11B-703.

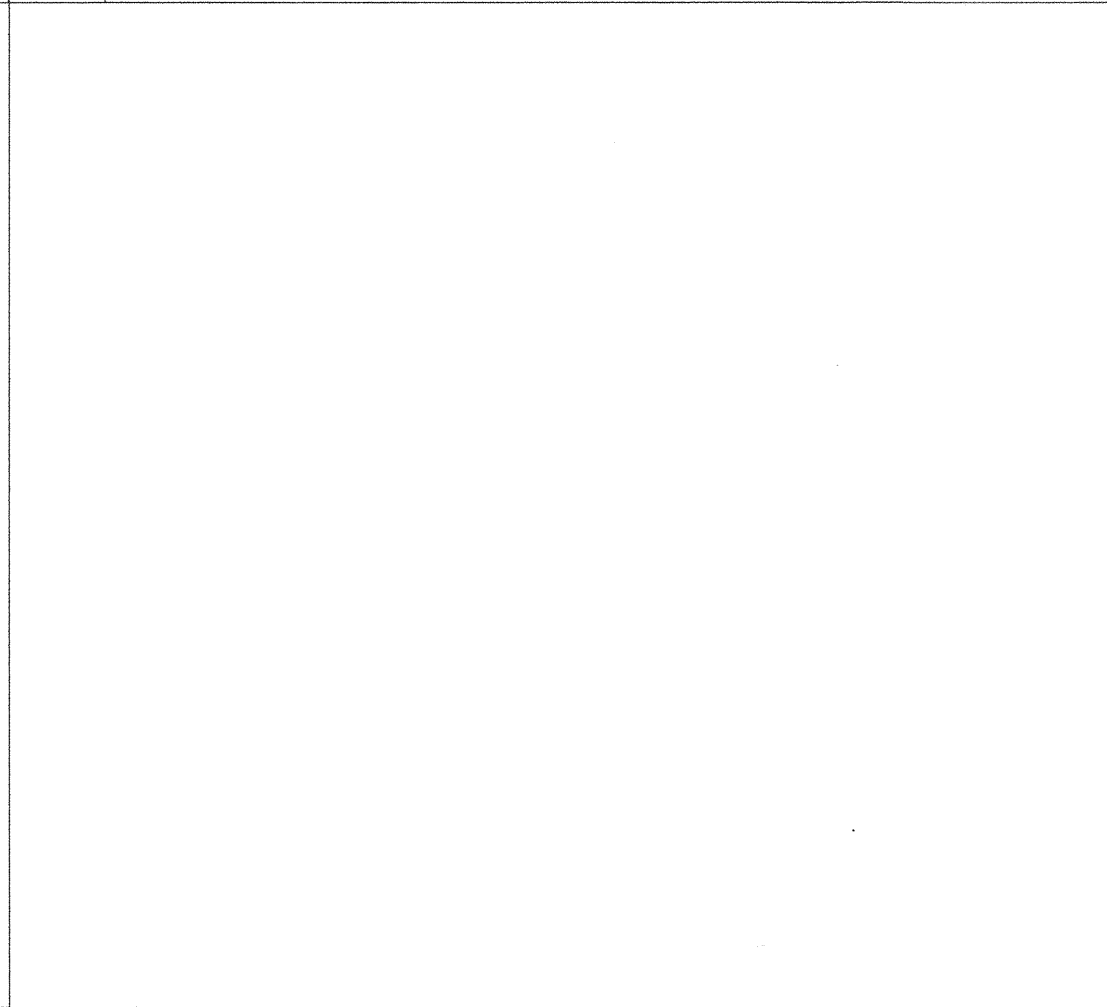
**13 SIGNAGE NOTES** 1/8" = 1'-0"



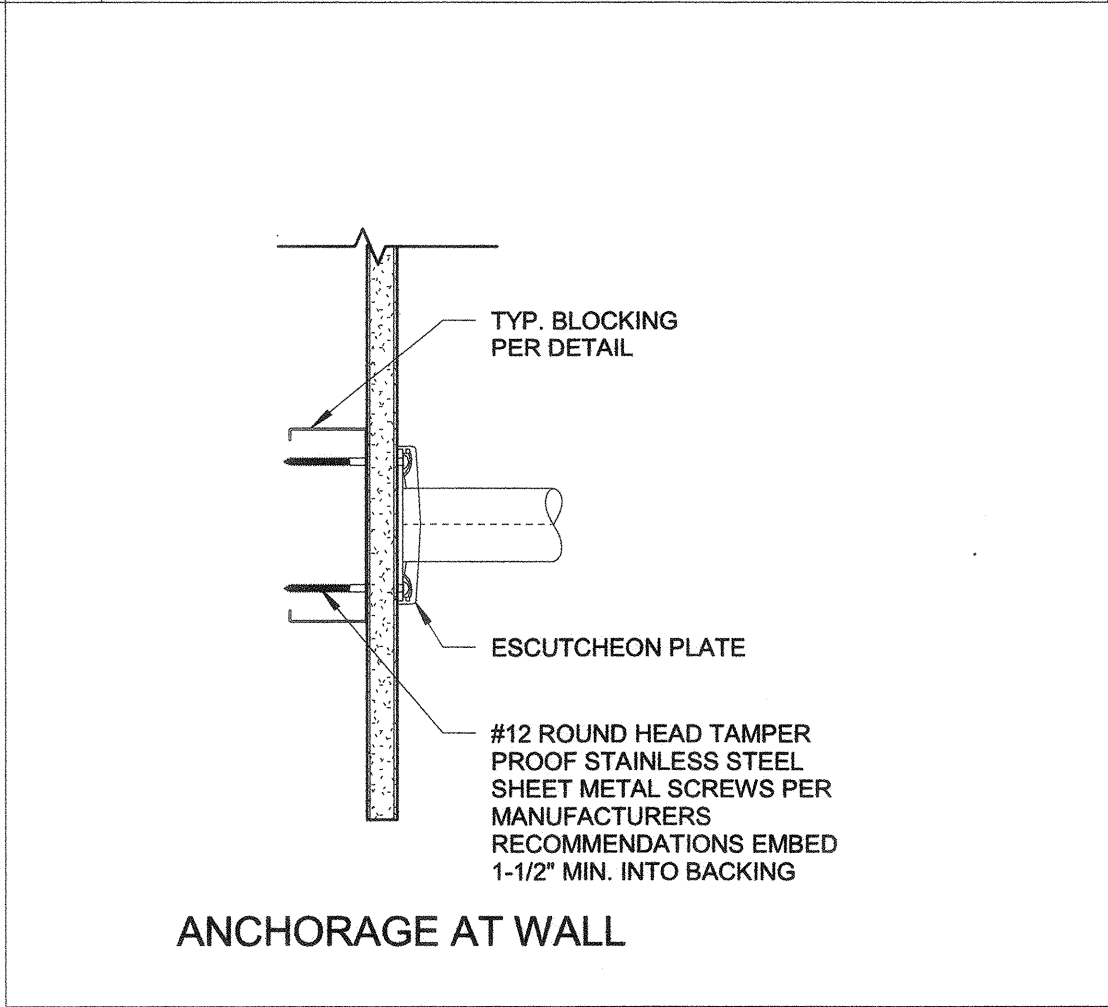
**14 DRINKING FOUNTAIN** 1/2" = 1'-0"



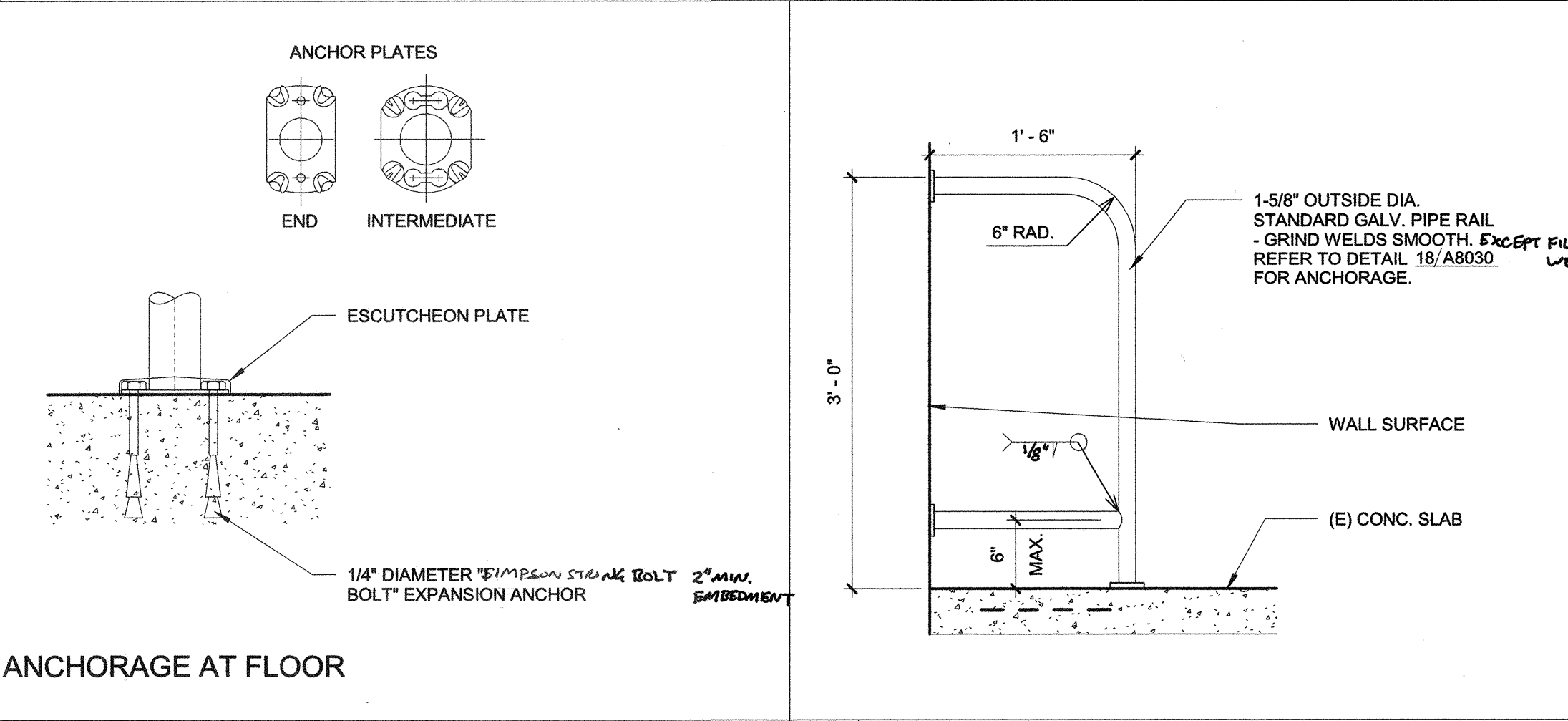
**16 TRACK STRIPE** 1" = 1'-0"



**18 D.F. HAND RAIL MOUNTING** 3" = 1'-0"



**18 D.F. HAND RAIL MOUNTING** 3" = 1'-0"



**20 D.F. RAIL** 1" = 1'-0"

PRIME CONSULTANT

**IBI** ARCHITECTURE PLANNING

San Luis Obispo  
4119 Broad Street, Suite 210  
San Luis Obispo, CA 93401  
805.546.0433 fax: 805.546.0504  
ibigroup.com

SEAL

LICENSURE ARCHITECT  
RELOCATED  
No. C18079  
REN. 10/17  
STATE OF CALIFORNIA

COPYRIGHT: Any reproduction or distribution for any purpose other than authorized by IBI Group is forbidden.

COPYRIGHT 2017 IBI GROUP

REVISIONS

NO.	DATE	APPRD.	DESCRIPTION

CONSULTANT

AGENCY INFORMATION:

AGENCY TRACKING NO. 63321-241  
FILE NO. 15-6

IDENTIFICATION STAMP  
DIV. OF THE STATE ARCHITECT  
OFFICE OF REGULATION SERVICES

03-118880  
AC/FLS/RS/CA  
DATE OCT 25 2017

BAKERSFIELD CITY SCHOOL DISTRICT

**BESSIE OWENS INTERMEDIATE RELOCATABLES A101 - A106**

815 EUREKA ST. BAKERSFIELD CA, 93305

OPSC or OSHPD PROJ. NO. 16241.000

PROJECT NO. 16241.000

DRAWN BY: rRr

CHKD BY: RM

ISSUE DATE: 08/29/2017

SHEET TITLE

**DETAILS**

SHEET NUMBER

**A8030**

CONSTRUCTION DOCUMENTS

PLOT DATE: 8/25/2017 8:26:17 AM  
C:\Users\Carlos.Zamanga\Documents\REV172016\ATW-16241-Site\_Bessie-2017-10-16-10-16-2016\_Carlos.Zamanga.rvt