

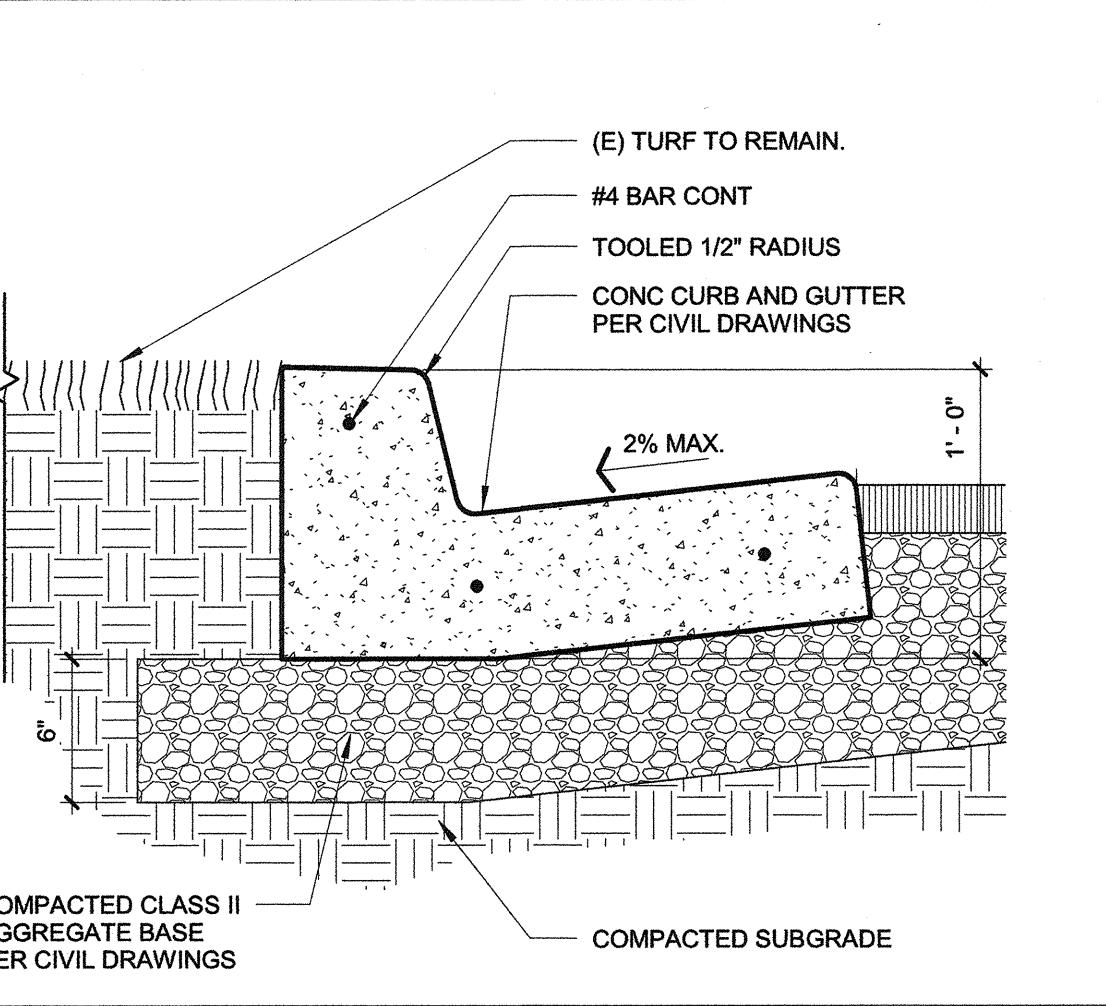
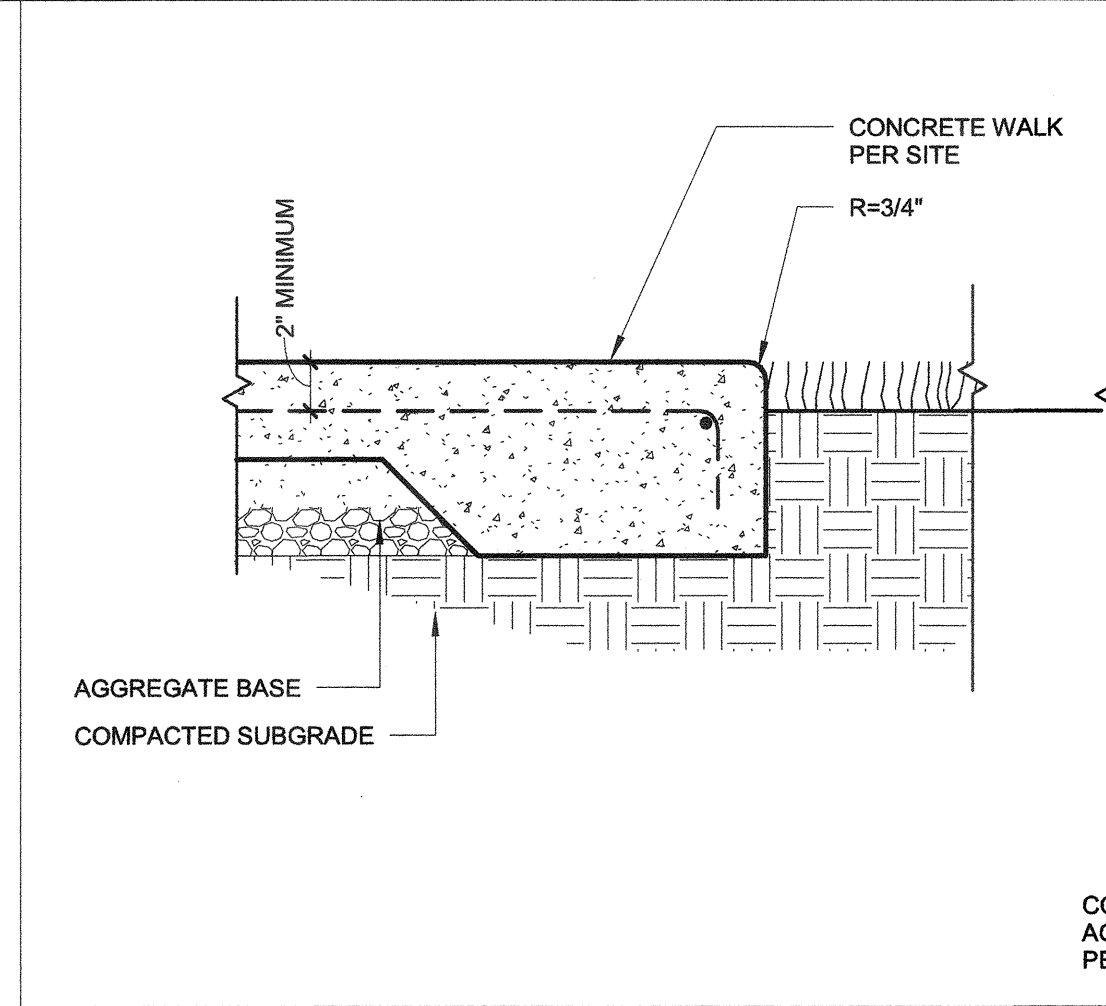
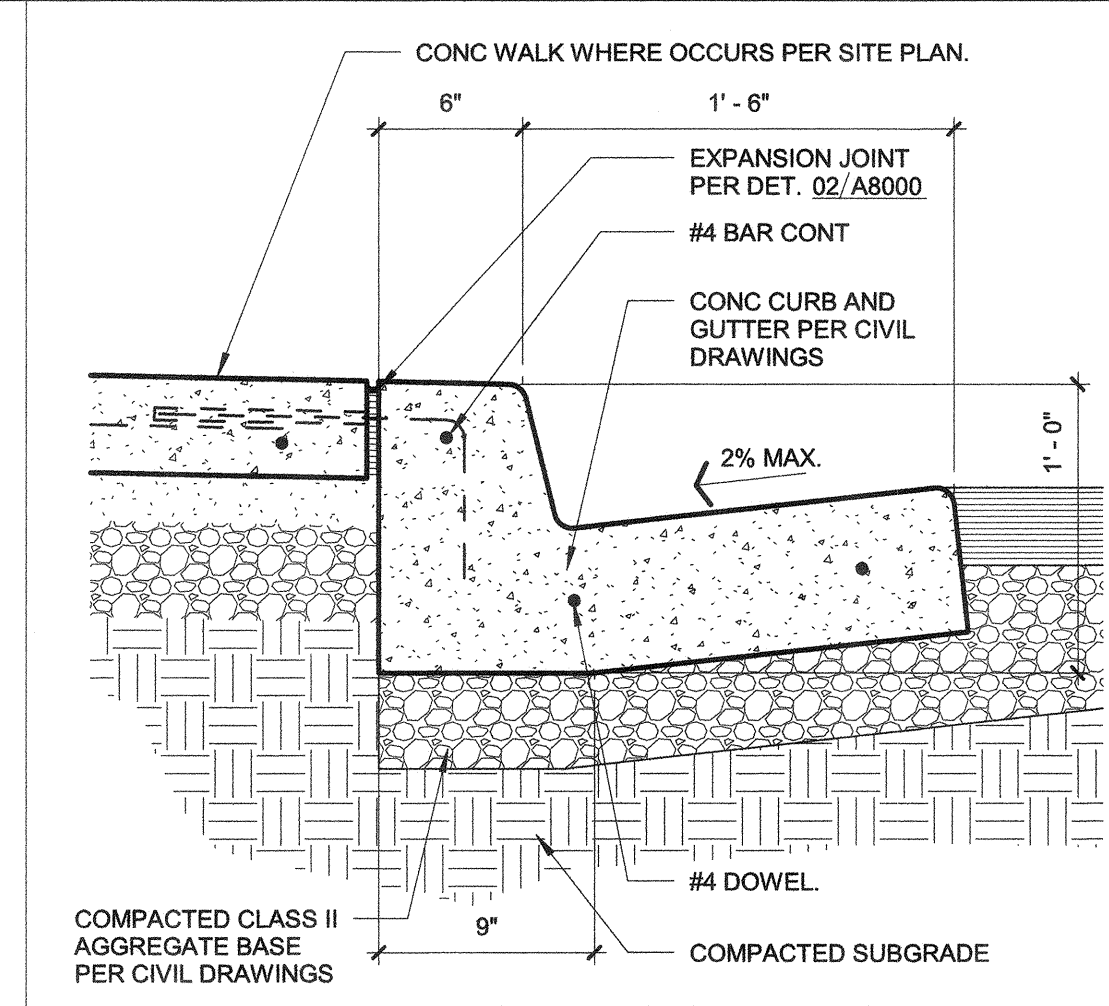
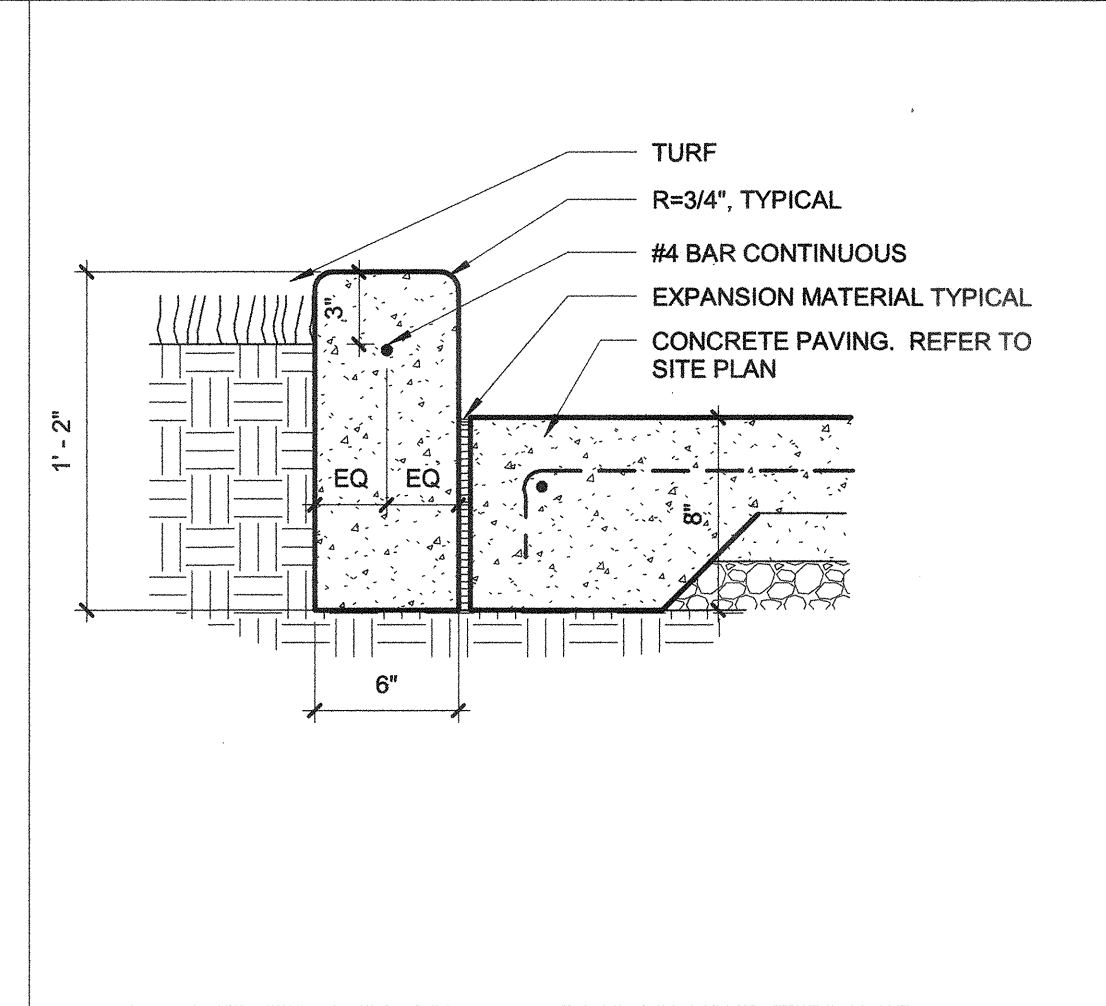
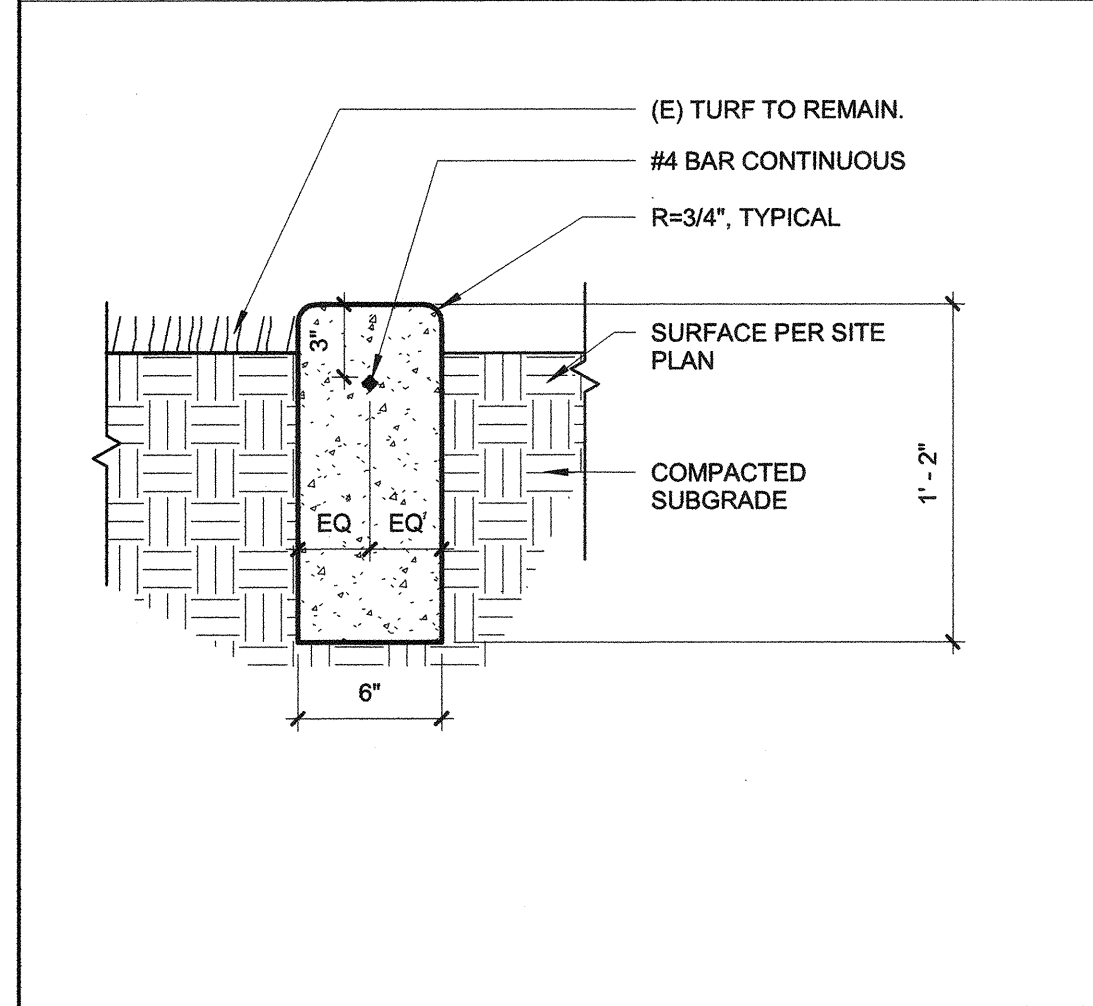
01 CONTROL JOINT 1 1/2" = 1'-0"

02 EXPANSION JOINT 1 1/2" = 1'-0"

03 WALKWAY EDGE 1 1/2" = 1'-0"

04 CONC. TO (E) CONC. 1 1/2" = 1'-0"

05 CURB @ (E) WALK 1 1/2" = 1'-0"

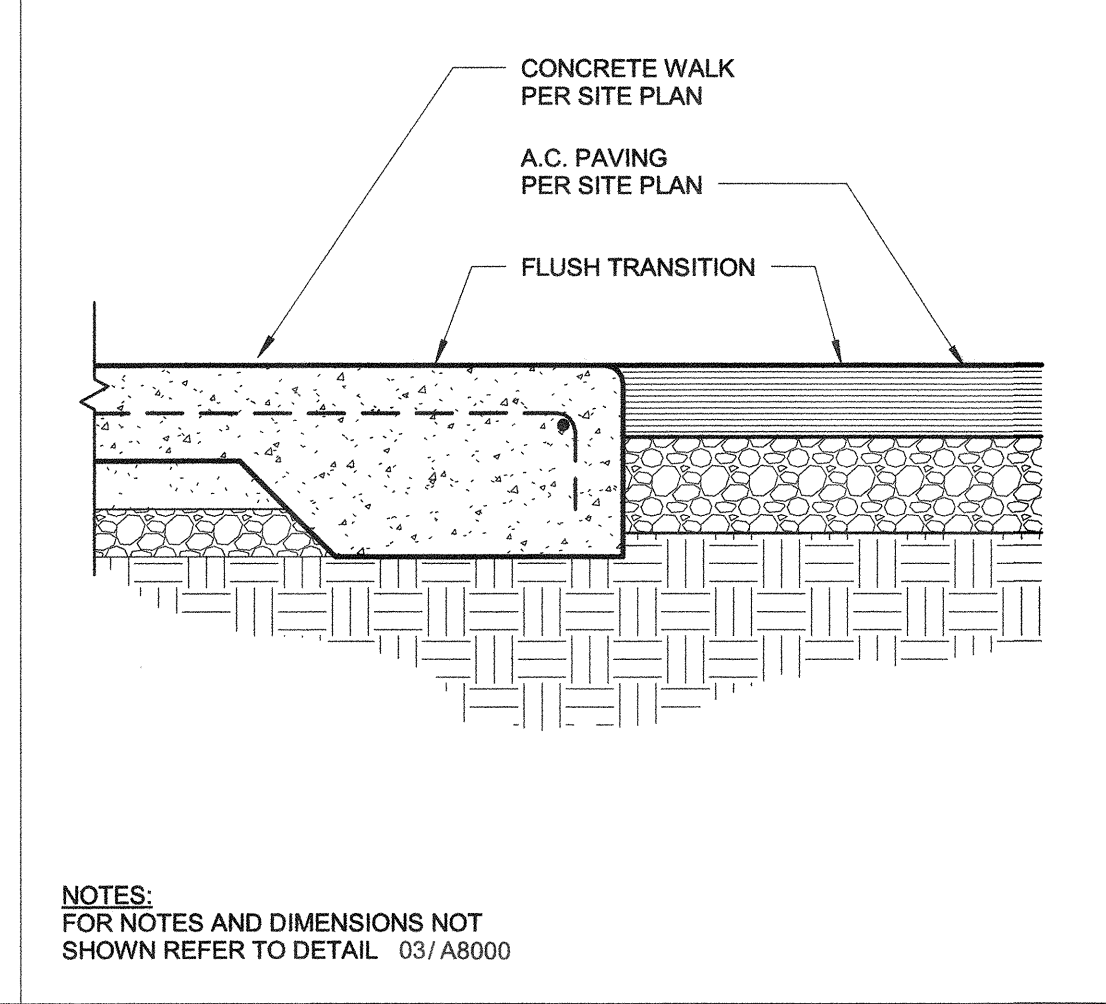
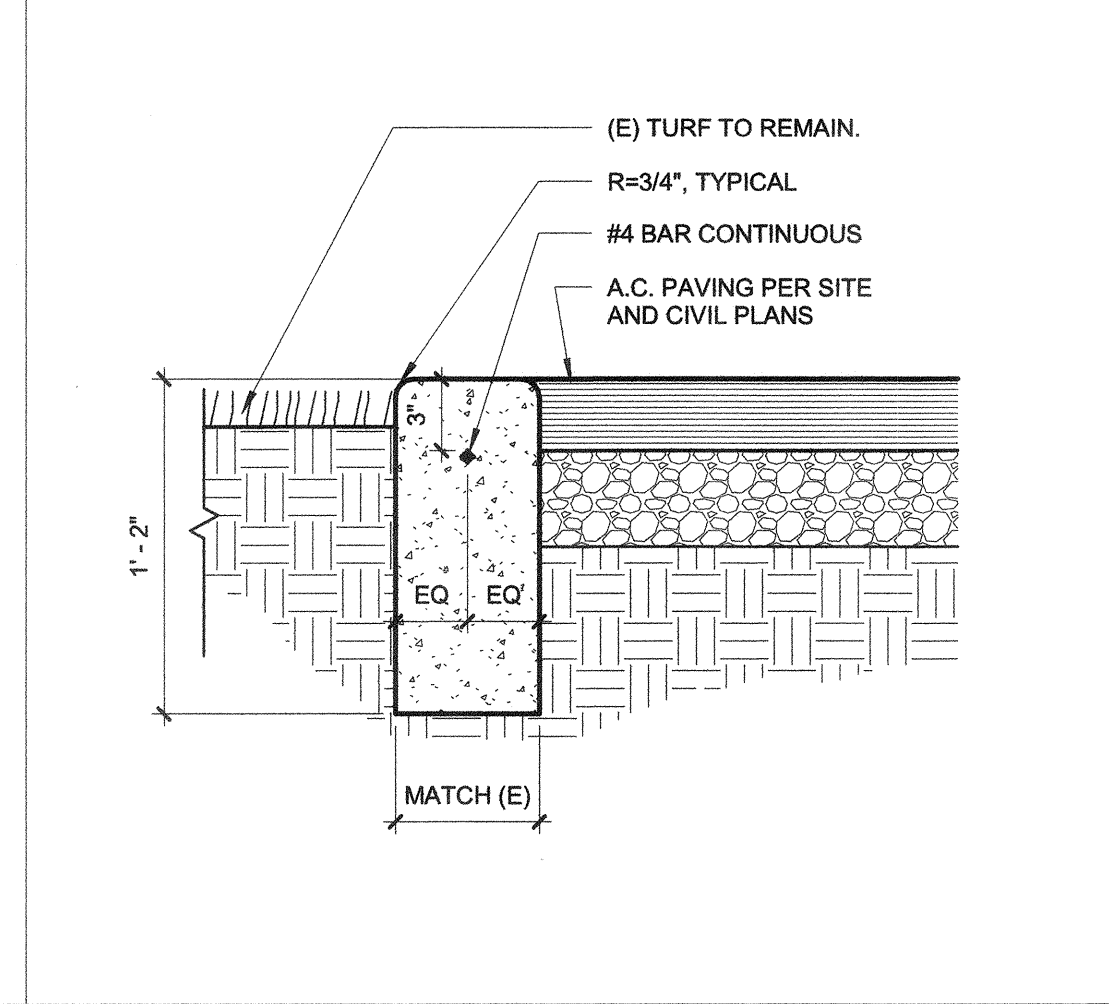
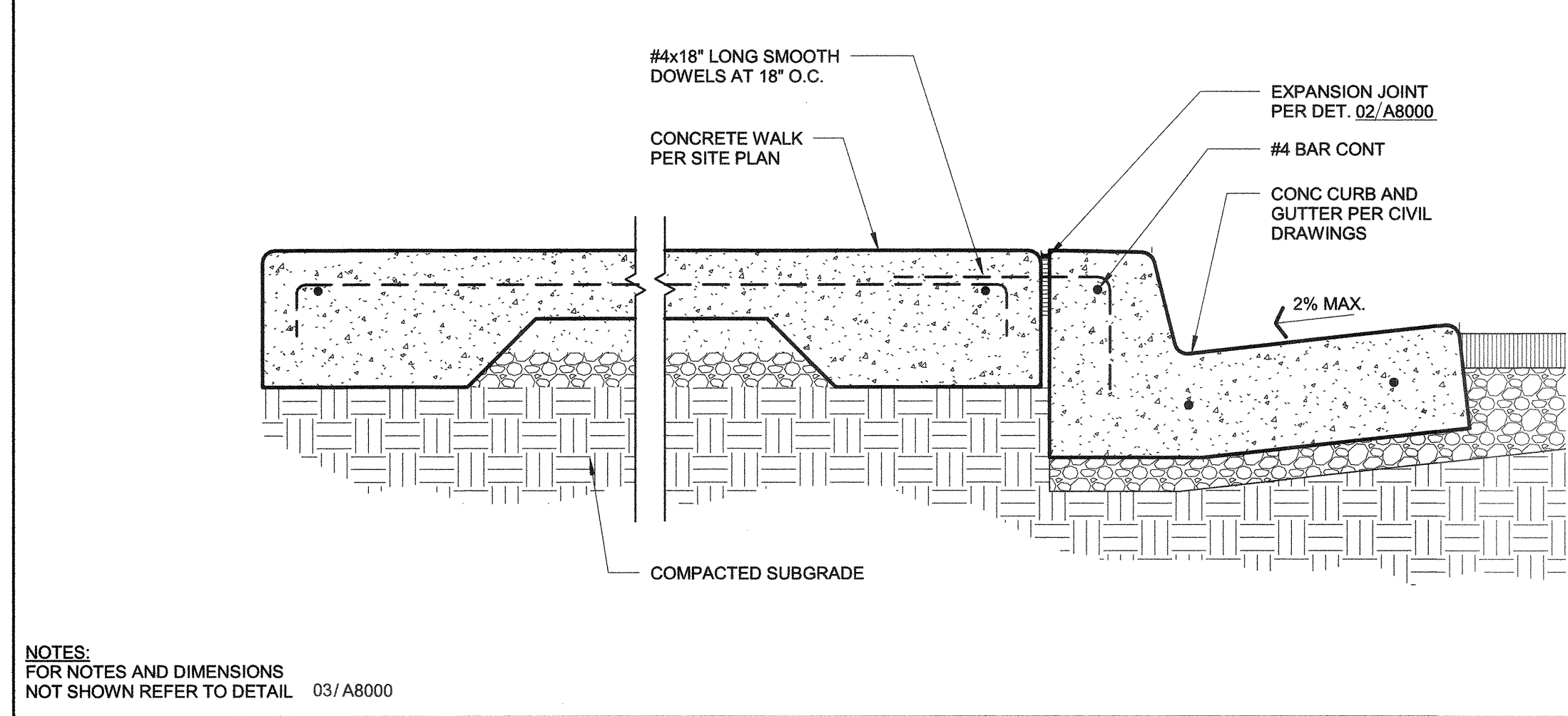


06 CONCRETE CURB 1 1/2" = 1'-0"

07 CONCRETE CURB 1 1/2" = 1'-0"

08 GUTTER & WALK 1 1/2" = 1'-0"

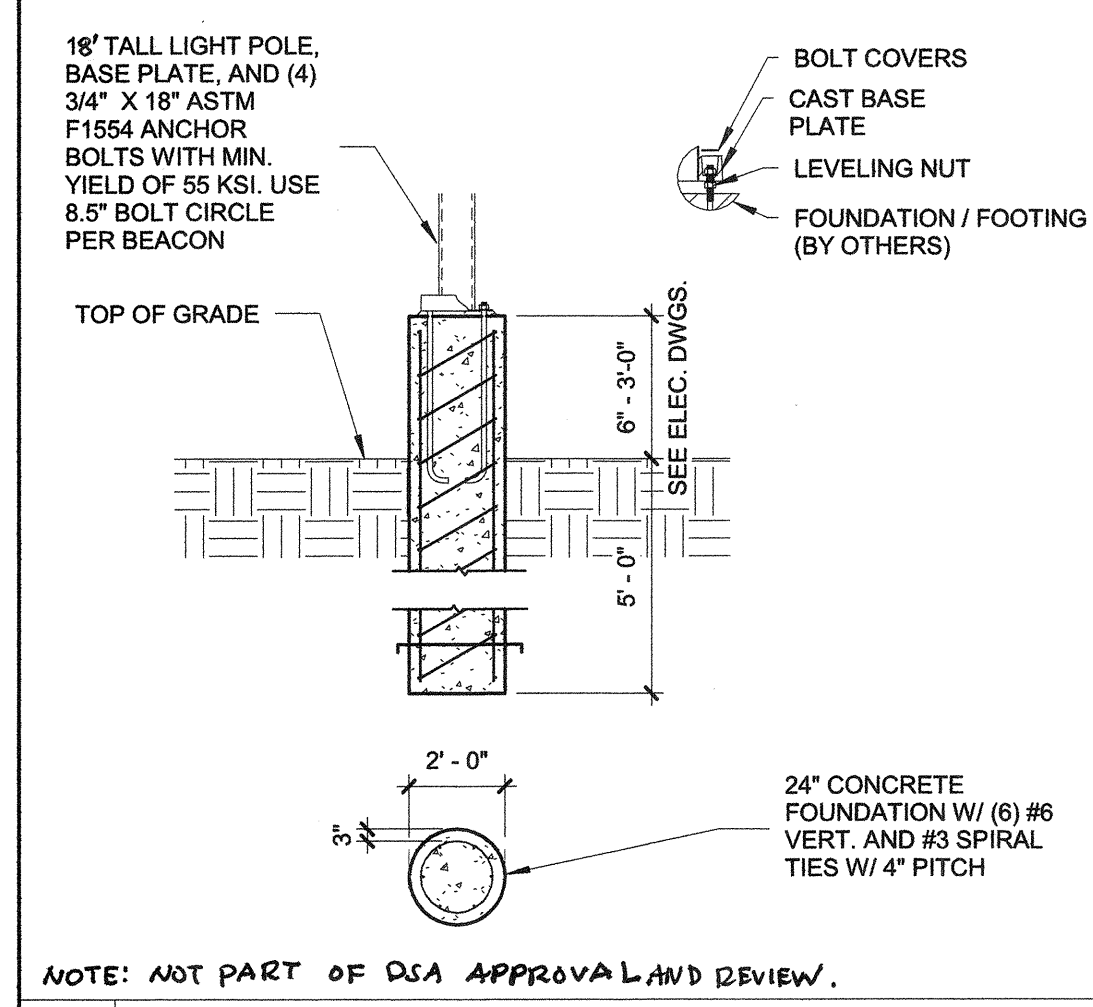
09 GUTTER TO LANDSCAPE TO WALK 1 1/2" = 1'-0"



11 WALK - GUTTER 1 1/2" = 1'-0"

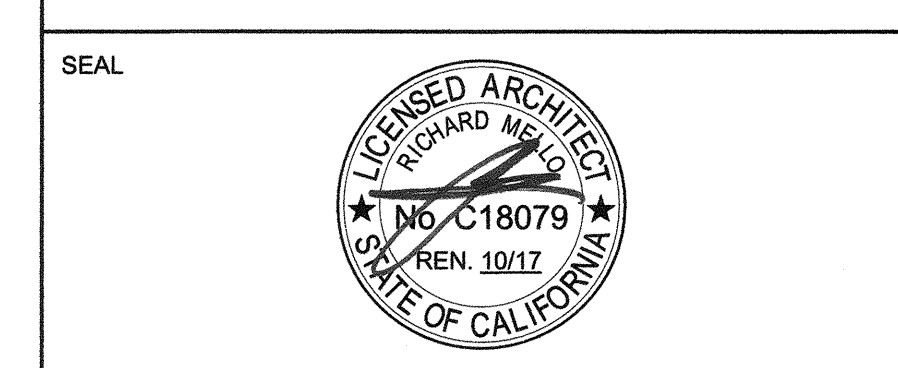
13 CONC. MOW STRIP 1 1/2" = 1'-0"

10 EDGE TO PAVING 1 1/2" = 1'-0"



16 L.P. FOUNDATION 1/4" = 1'-0"

PRIME CONSULTANT
IBI ARCHITECTURE PLANNING
 San Luis Obispo
 4119 Broad Street, Suite 210
 San Luis Obispo, CA 93401
 805.546.0433 fax: 805.546.0504
 ibigroup.com



COPYRIGHT:
 Any reproduction or distribution for any purpose other than authorized by IBI Group is forbidden.
 COPYRIGHT 2017 IBI GROUP

REVISIONS			
NO.	DATE	APPRD.	DESCRIPTION

CONSULTANT

AGENCY INFORMATION:
 AGENCY TRACKING NO. 63321-241
 FILE NO. 15-6
 IDENTIFICATION STAMP
 DIV. OF THE STATE ARCHITECT
 OFFICE OF REGULATION SERVICES
03-118380
 ARCHITECT FLORIAN S. S. O.
 DATE 08/25/2017

BAKERSFIELD CITY SCHOOL DISTRICT

BESSIE OWENS INTERMEDIATE RELOCATABLES A101 - A106
 815 EUREKA ST. BAKERSFIELD CA, 93305

OPSC or OSHPD PROJ. NO.
 PROJECT NO: 16241.000
 DRAWN BY: rRr
 CHKD BY: RM
 ISSUE DATE: 08/29/2017
 SHEET TITLE
DETAILS

SHEET NUMBER
A8000

CONSTRUCTION DOCUMENTS
 C:\Users\Carolina_Zaragoza\Documents\REVISED\16141\16141-16241-Site_Bessie-2017-08-29\16141-16241-Site_Bessie-2017-08-29.dwg