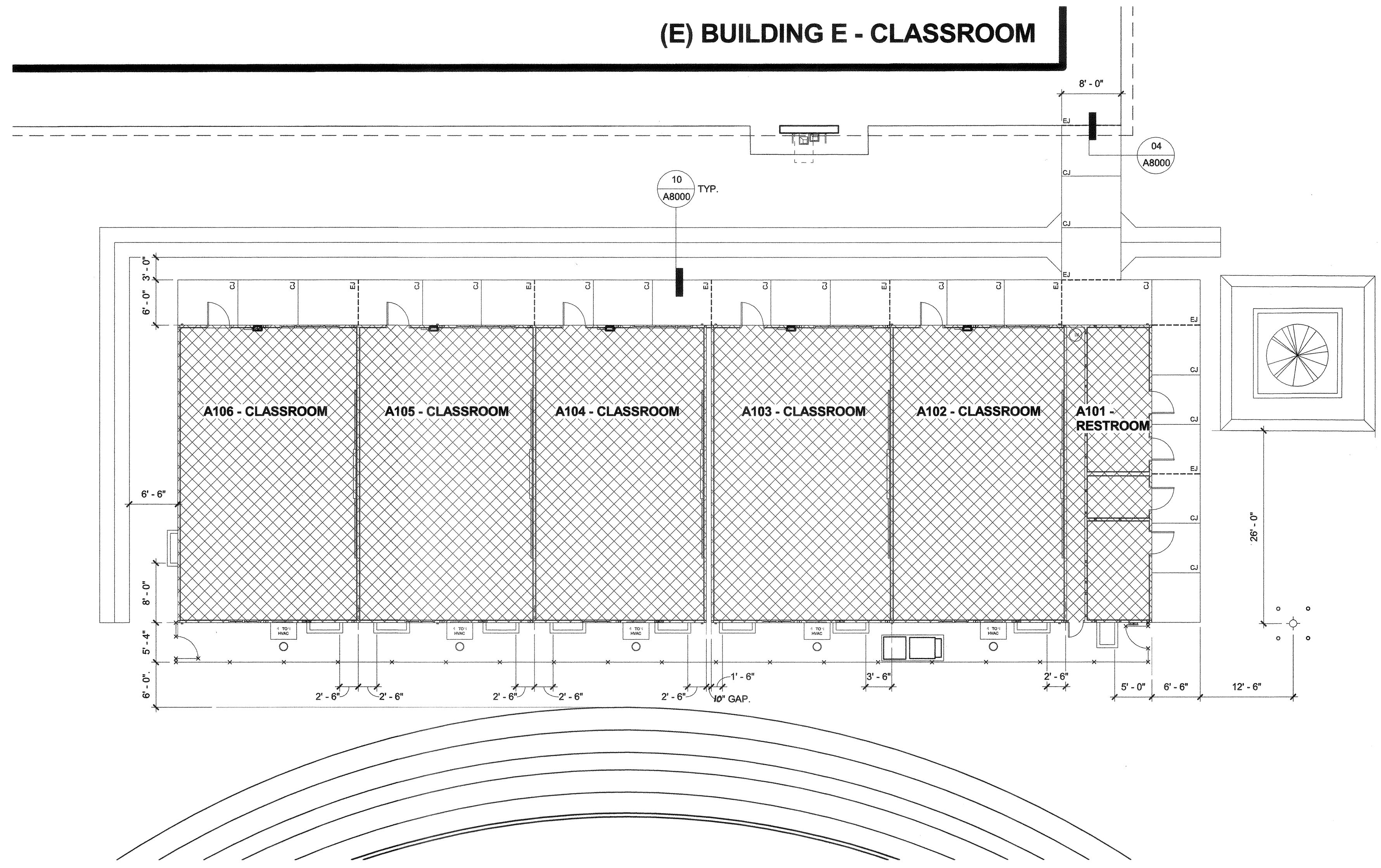
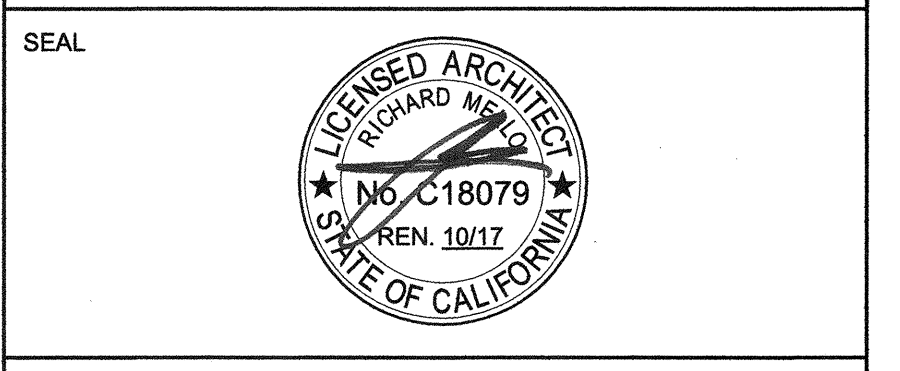


(E) BUILDING E - CLASSROOM



1 DIMENSION SITE PLAN - RELOCATABLES
NOTE: HATCH PATTERNS OMITTED FOR CLARITY

PRIME CONSULTANT
IBI ARCHITECTURE PLANNING
 San Luis Obispo
 4119 Broad Street, Suite 210
 San Luis Obispo, CA 93401
 805.546.0433 fax: 805.546.0504
 ibigroup.com



COPYRIGHT:
 Any reproduction or distribution for any purpose other than authorized by IBI Group is forbidden.
 COPYRIGHT 2017 IBI GROUP

REVISIONS

NO.	DATE	APPRD.	DESCRIPTION

CONSULTANT

AGENCY INFORMATION:
 AGENCY TRACKING NO. 63321-241
 FILE NO. 15-6
 IDENTIFICATION STAMP
 DIV. OF THE STATE ARCHITECT
 OFFICE OF REGULATION SERVICES
03-118380
 DATE **07 25 2017**

BAKERSFIELD CITY SCHOOL DISTRICT

BESSIE OWENS INTERMEDIATE RELOCATABLES
A101 - A106
 815 EUREKA ST. BAKERSFIELD CA, 93305

OPSC or OSHPD PROJ. NO.
 PROJECT NO: 16241.000
 DRAWN BY: rRr
 CHK'D BY: RM
 ISSUE DATE: 08/29/2017

SHEET TITLE
DIMENSION SITE PLAN - RELOCATABLES

SHEET NUMBER
A1155

CONSTRUCTION DOCUMENTS

PLOT DATE: 8/25/2017 2:28:18 PM C:\Users\Ruben.Ruben\Documents\REVIT2016\ATV\16241-Sig_Bessie-2017-01-04-V2016_Ruben_Ruz.rvt