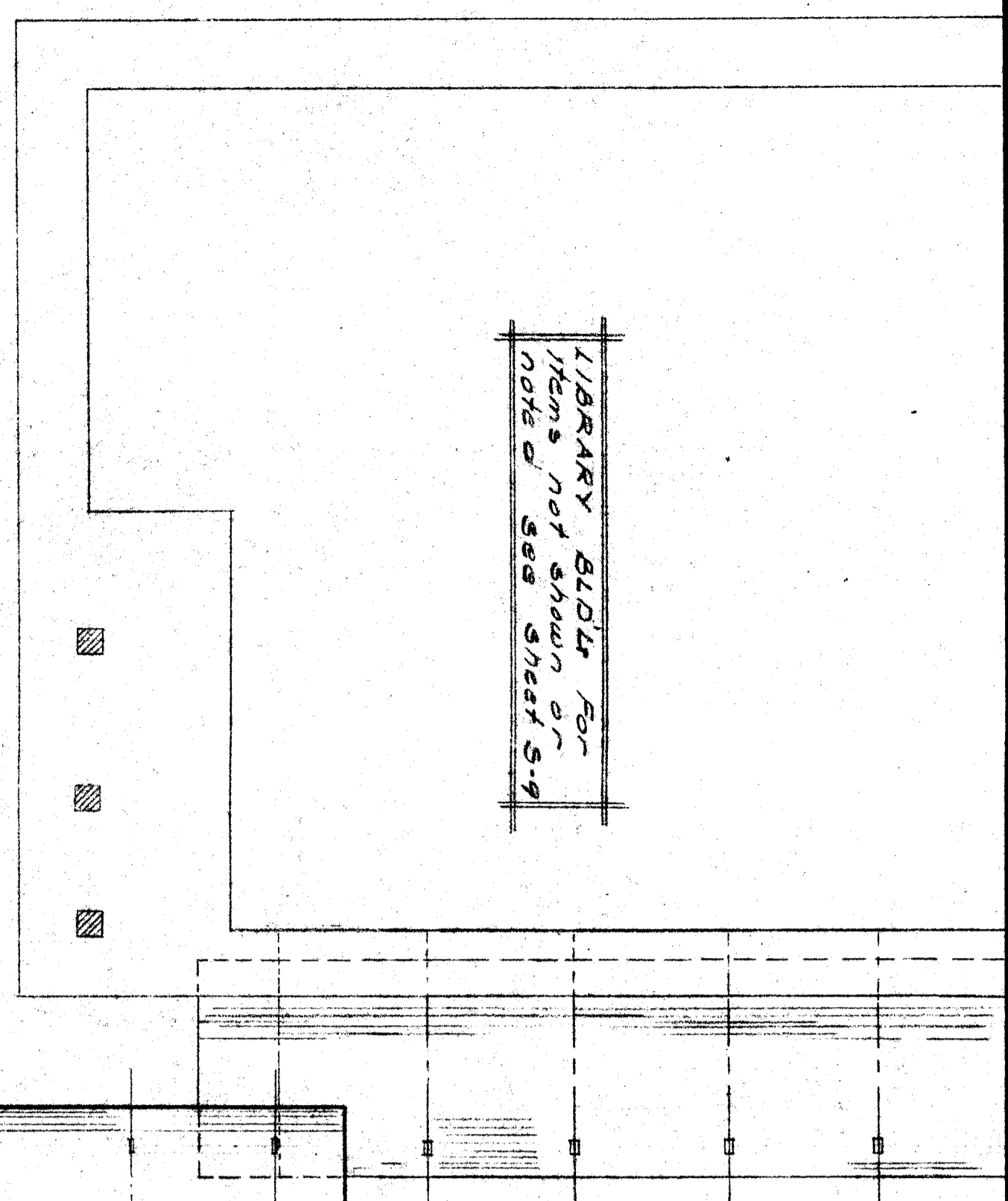
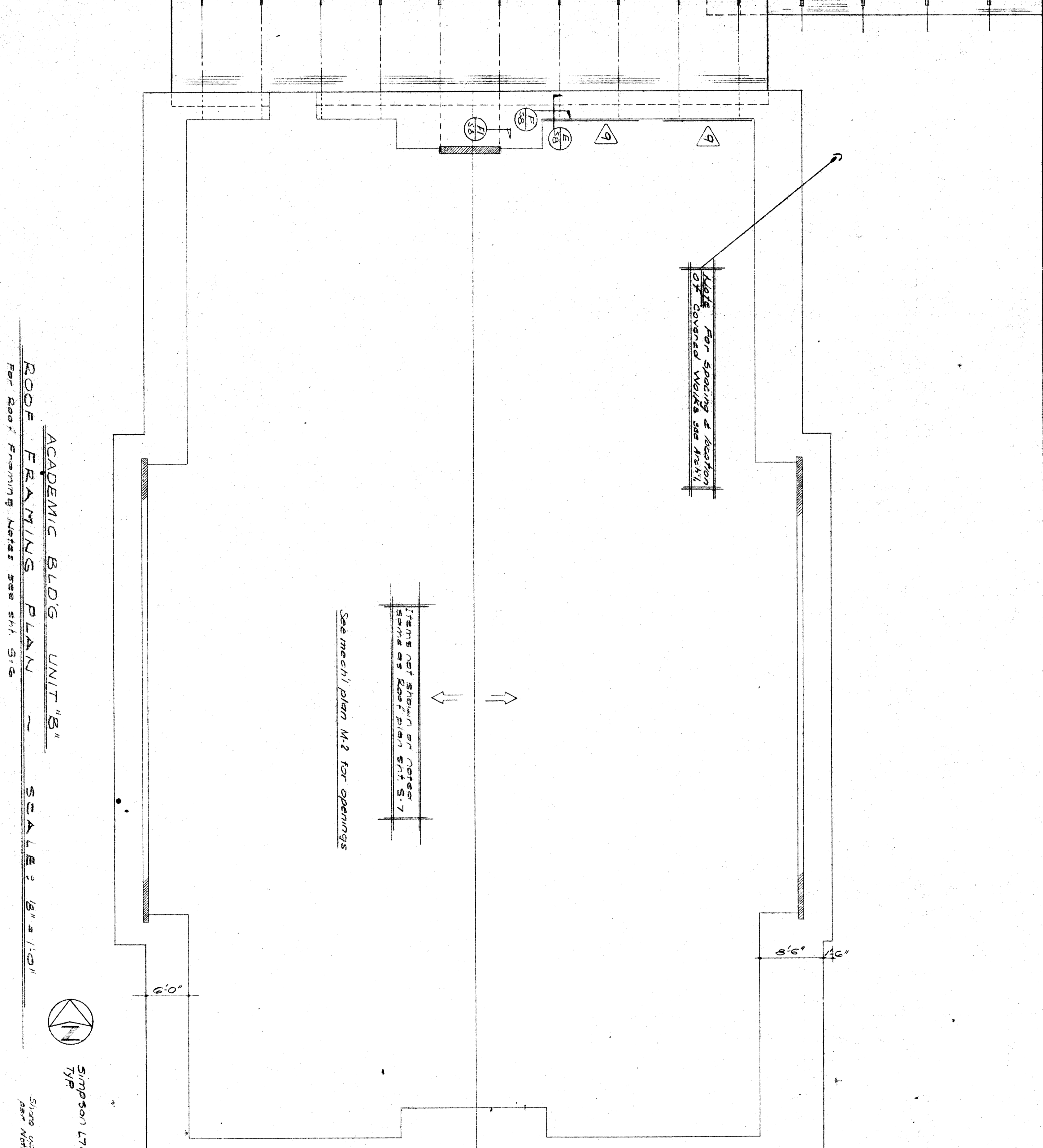
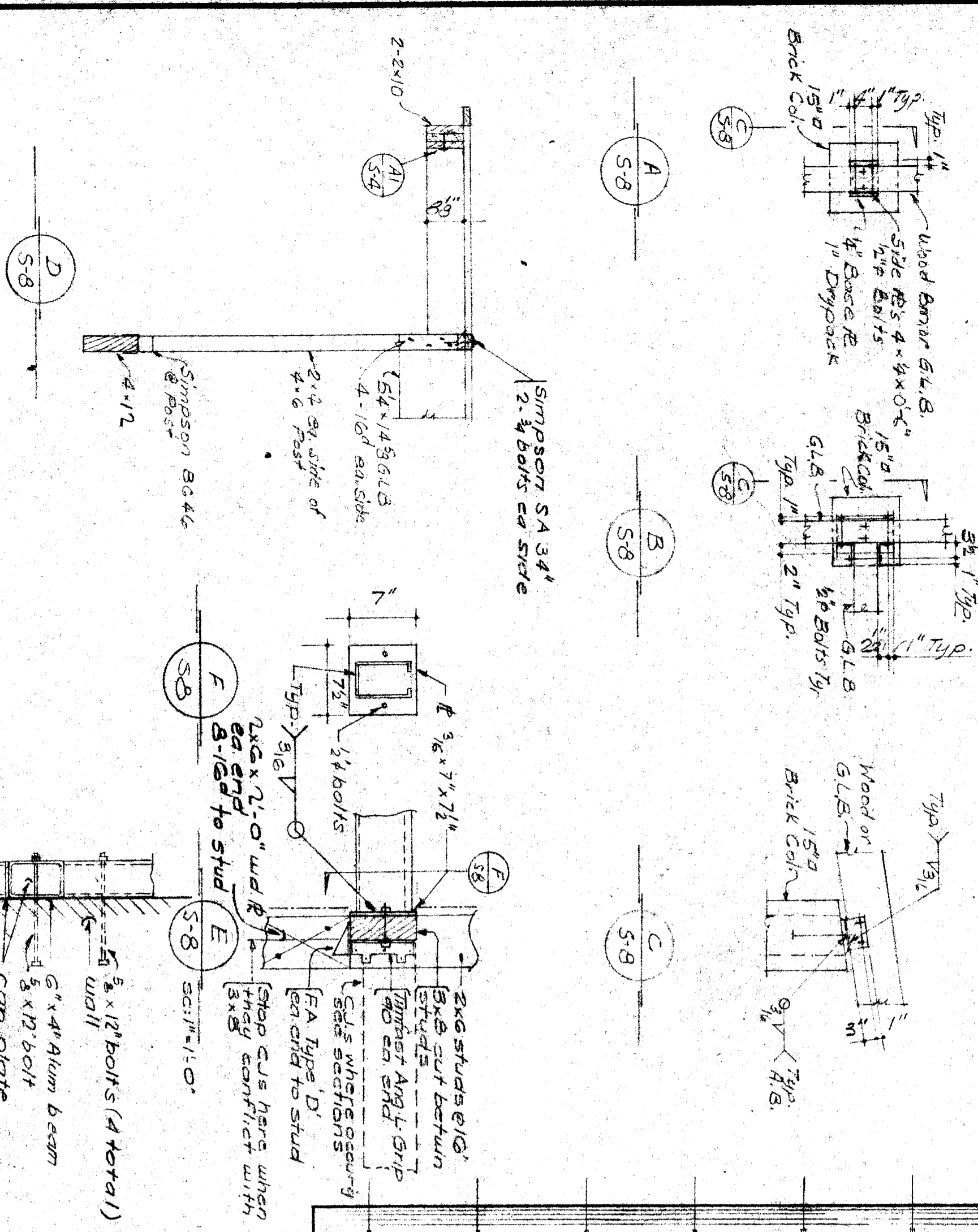


LIBRARY BLDG. FOR  
ITEMS NOT SHOWN OR  
NOTE @ SEE SHEET S-4



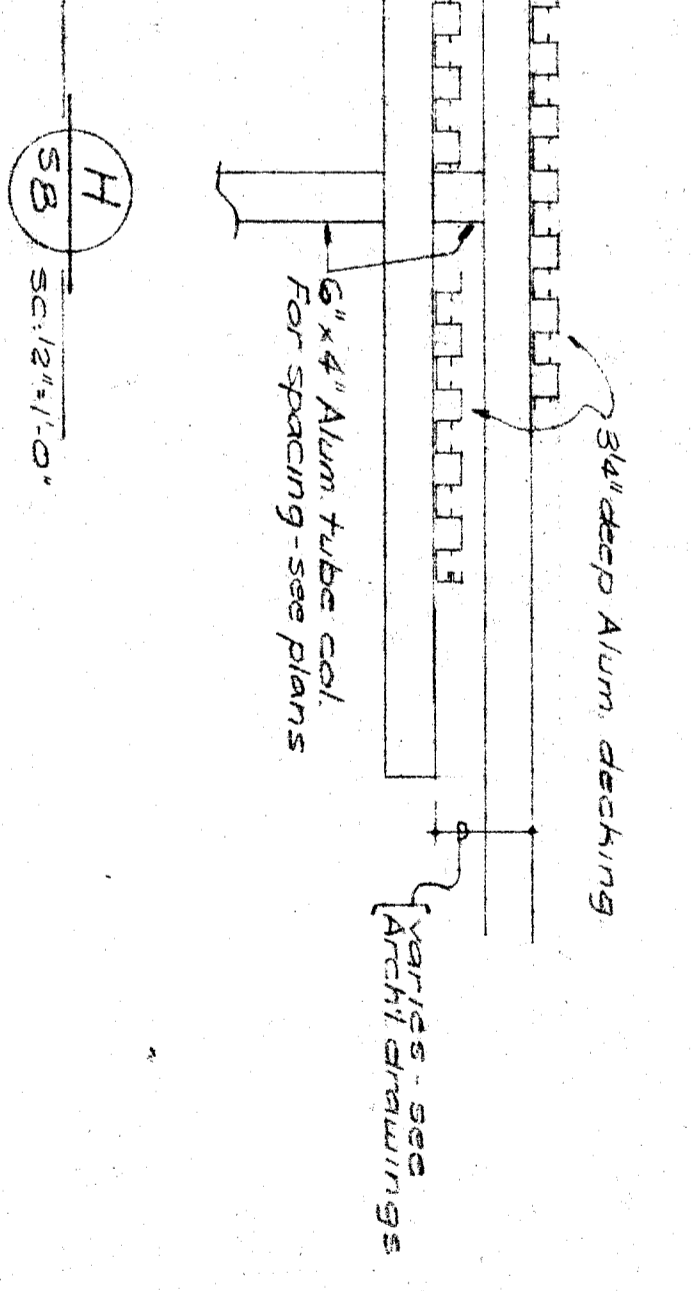
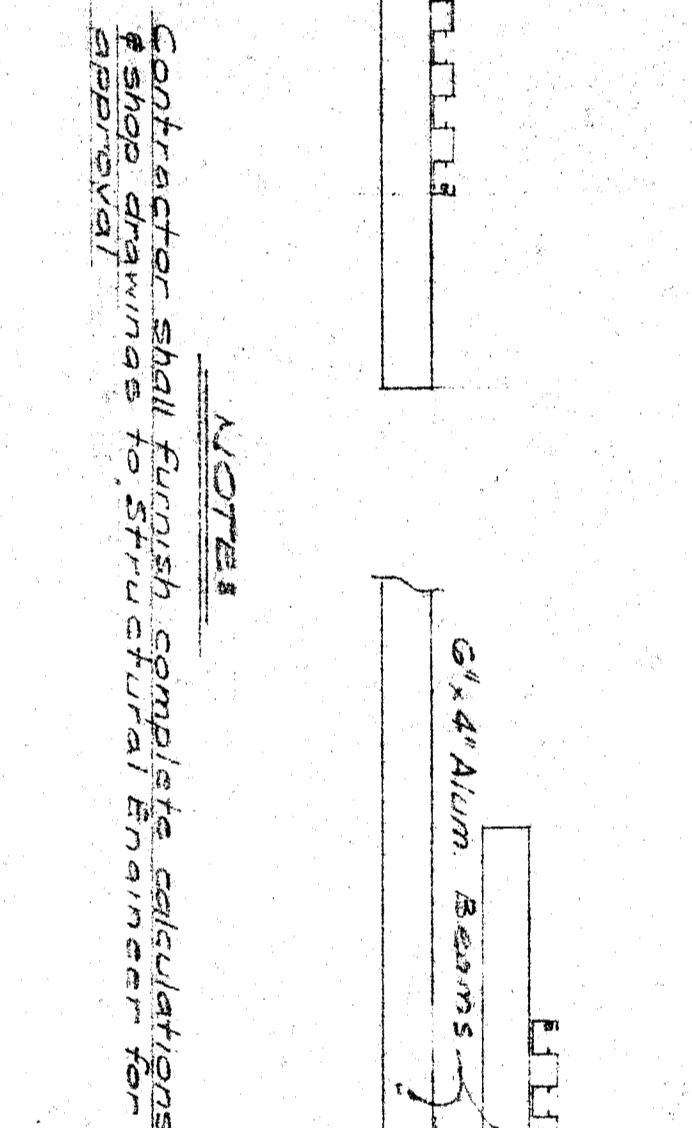
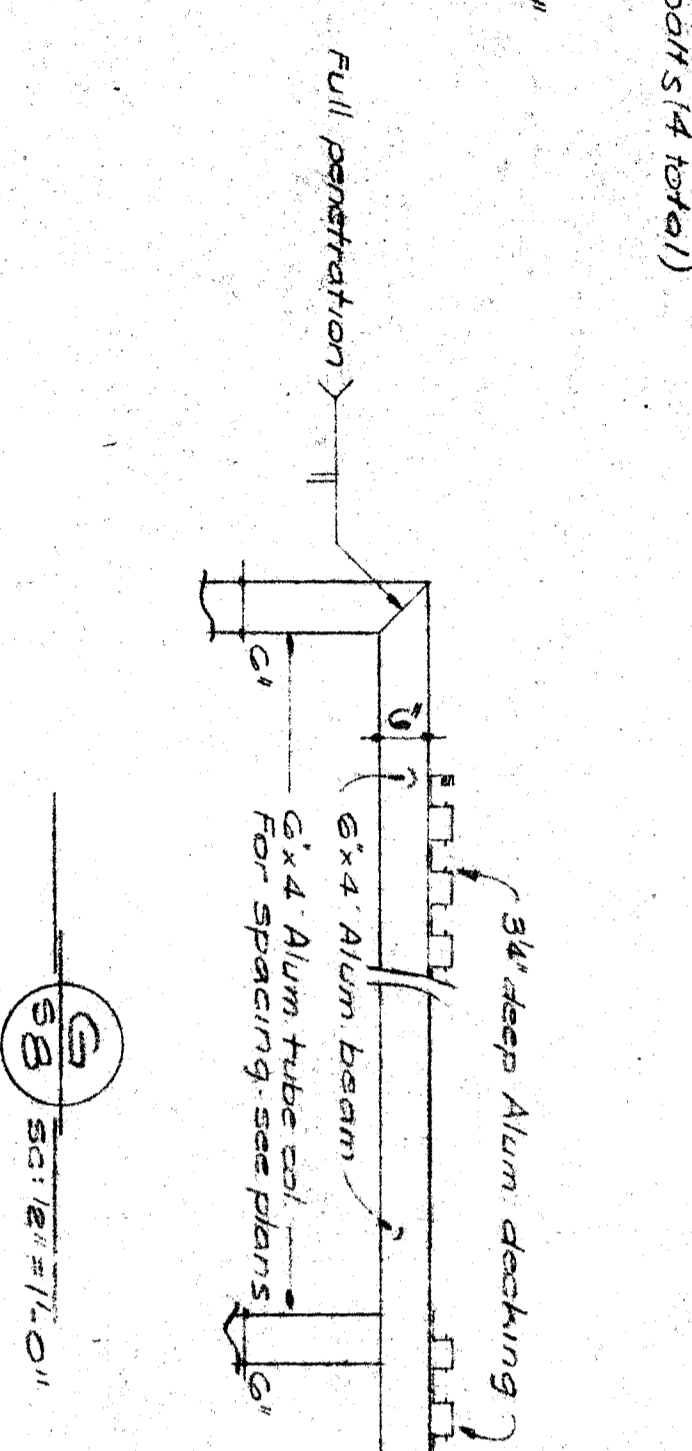
NOTE: For spacing & location  
of covered walk see sheet S-4



Items not shown or noted  
same as Roof Plan S-1.7

See mech' plan M-2 for openings

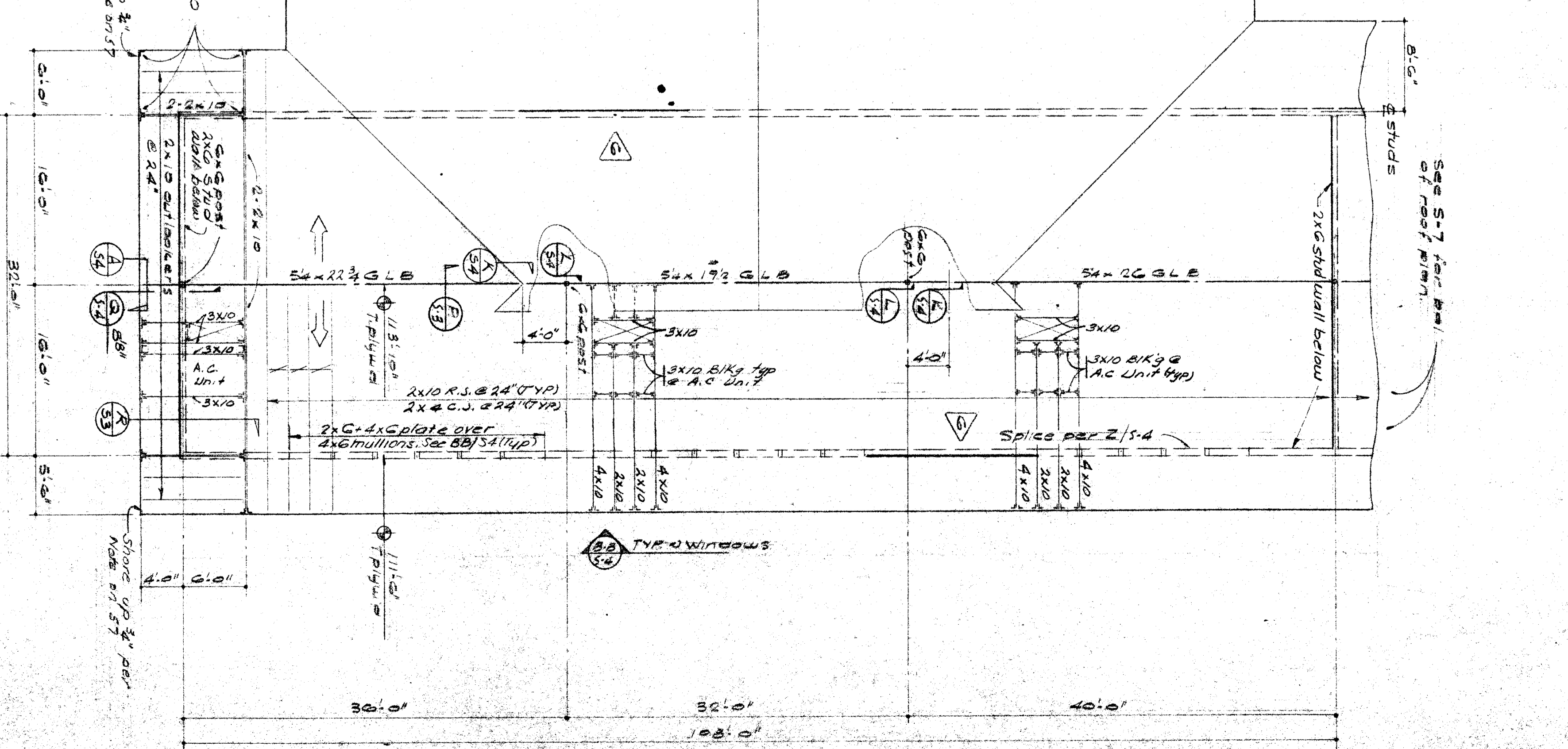
ACADEMIC BLDG UNIT "B"  
ROOF FRAMING PLAN ~ SCALE: 1/4" = 1'-0"  
For Roof Framing Notes see S-1.7



NOTES:  
Contractor shall furnish complete calculations  
& shop drawings to Structural Engineer for  
approval.

(H) SEE S-1.7

SPECIAL CLASSROOMS



CHECK AND VERIFY ALL DIMENSIONS AND CONDITIONS AT JOB SITE BEFORE PROCEEDING WITH THE WORK.		REPORT ANY DISCREPANCIES TO THE ARCHITECT.	
SYMBOL	BY	DATE	DATE
AS BUILT			
ADDENDUM			
CHANGE ORDER			
CLEARANCE			
DATE			
APPROVED - DATE			
APPROVED BY BOARD OF SUPERVISORS COUNTY OF ALBANY ALBANY, CALIFORNIA JULY 5, 1958 SUPERVISOR JOHN J. FAY		APPROVED BY HILMAN, ROBERT & LORENZINI ARCHITECTS 2111 H. STREET RIVERSIDE, CALIFORNIA 92504	
ERNEST L. MCCOY A.I.A. ARCHITECT 2111 H. STREET RIVERSIDE, CALIFORNIA 92504		BENJUCE HARDELL CHILMAN JR HIGH SCHOOL	
SHEET NO. 678 PROJECT NO. 80609 APPROVED JULY 5 - 1958		SHEET NO. 5-3 PROJECT NO. 80609	