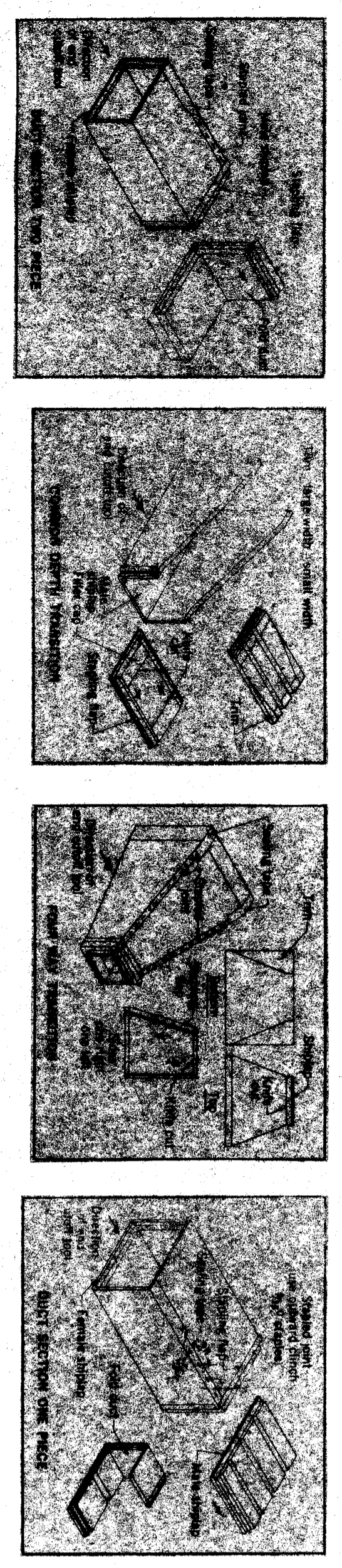
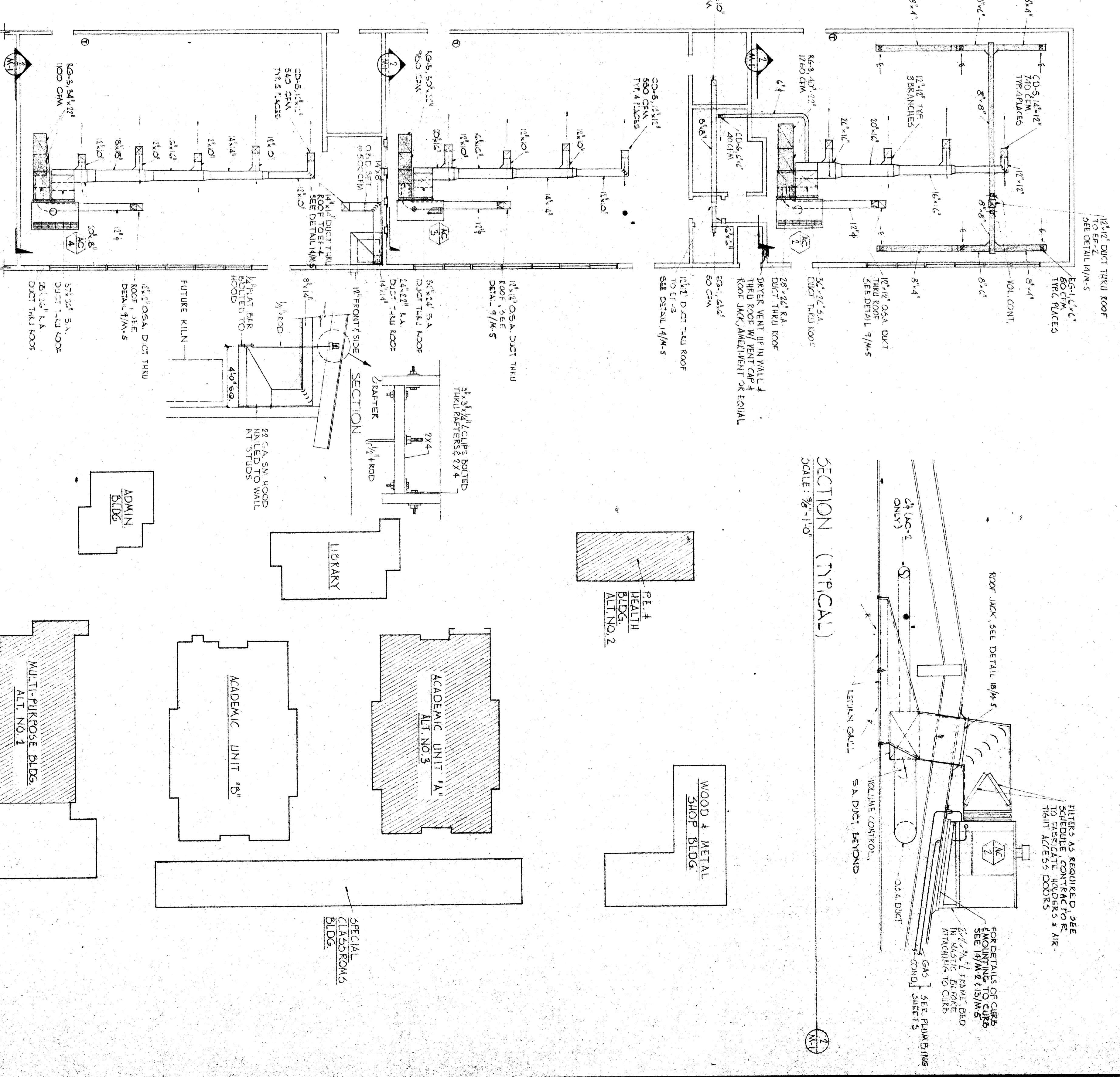


AC FLOOR PLAN (ACADEMIC UNIT 'A')



DUCT BOARD DETAIL

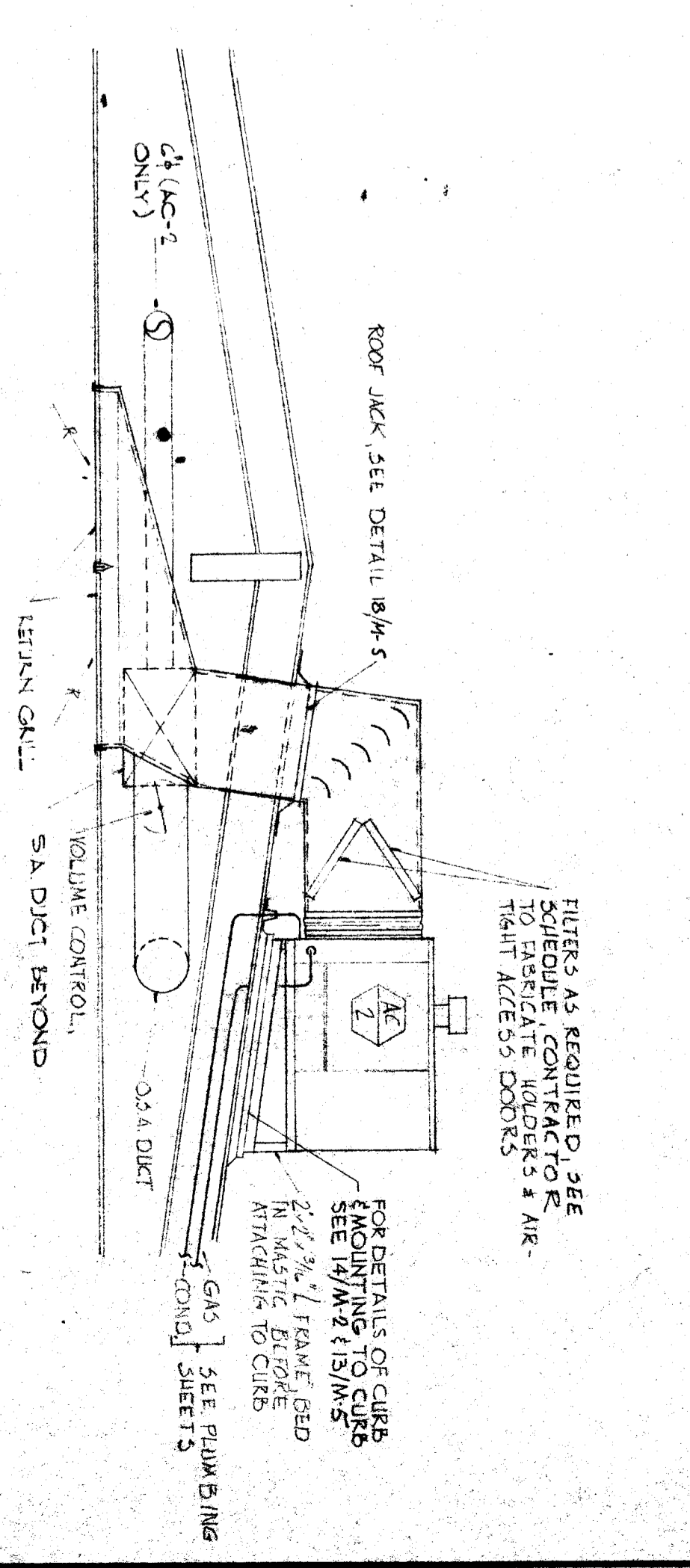
NOTE: SINGLE DIMENSION OF 3/4" OR K.A. DUCT DOES NOT EXCEED 2 1/4" DUCT BOARD MAY BE USED IN PLACE OF 3/4" EXCEPTING DUCT BELOW CONCRETE FLOOR. DUCT BOARD TO BE USED IN PLACE OF 3/4" EXCEPTING DUCT BELOW CONCRETE FLOOR. DUCT BOARD TO BE USED IN PLACE OF 3/4" EXCEPTING DUCT BELOW CONCRETE FLOOR. DUCT BOARD TO BE USED IN PLACE OF 3/4" EXCEPTING DUCT BELOW CONCRETE FLOOR.



PART PLOT PLAN

- INSTRUCTIONS TO BIDDERS:
(REFER TO PART PLOT PLAN (M-1))
1. BASE BID, ALL BUILDINGS AS SHOWN ON PART PLOT PLAN.
 2. ALL BID NO. 1, SAME AS BASE BID EXCEPT DELETE THAT PART OF MULTI-PURPOSE BLDG. SHOWN SHADED.
 3. ALL BID NO. 2, SAME AS BASE BID EXCEPT DELETE ALL OF PE & HEALTH BLDG.
 4. ALL BID NO. 3, SAME AS BASE BID EXCEPT DELETE ALL OF ACADEMIC UNIT 'A'.

SECTION (TYPICAL)
SCALE: 3/8" = 1'-0"



CHECK AND VERIFY ALL DIMENSIONS AND CONDITIONS AT JOB SITE BEFORE PROCEEDING WITH THE WORK. REPORT ANY DISCREPANCIES TO THE ARCHITECT. DRAWING NO. DATE: APR 27 1998		APPROVED BY: ROMANUS B. BROWN, BAKERSFIELD CITY SCHOOL DISTRICT, DATE: JUL 9 1998	
REVISIONS	DATE	DATE	DATE
AS BUILT			
ADDRESS	STATE OF CALIFORNIA		
CHANGE ORDER	APPROVED UNDER STATUTES OF CALIFORNIA		
CALIFICATION			
ERNEST L. MCCOY AIA ARCHITECT, 2811 K STREET, BAKERSFIELD		BERNICE HARELL CHIPMAN JUNIOR HIGH SCHOOL, BAKERSFIELD CITY SCHOOL DISTRICT, CALIFORNIA 93300	
A-G FLOOR PLAN - ACADEMIC UNIT 'A'		SHEET 678 OF 7 SHEETS	