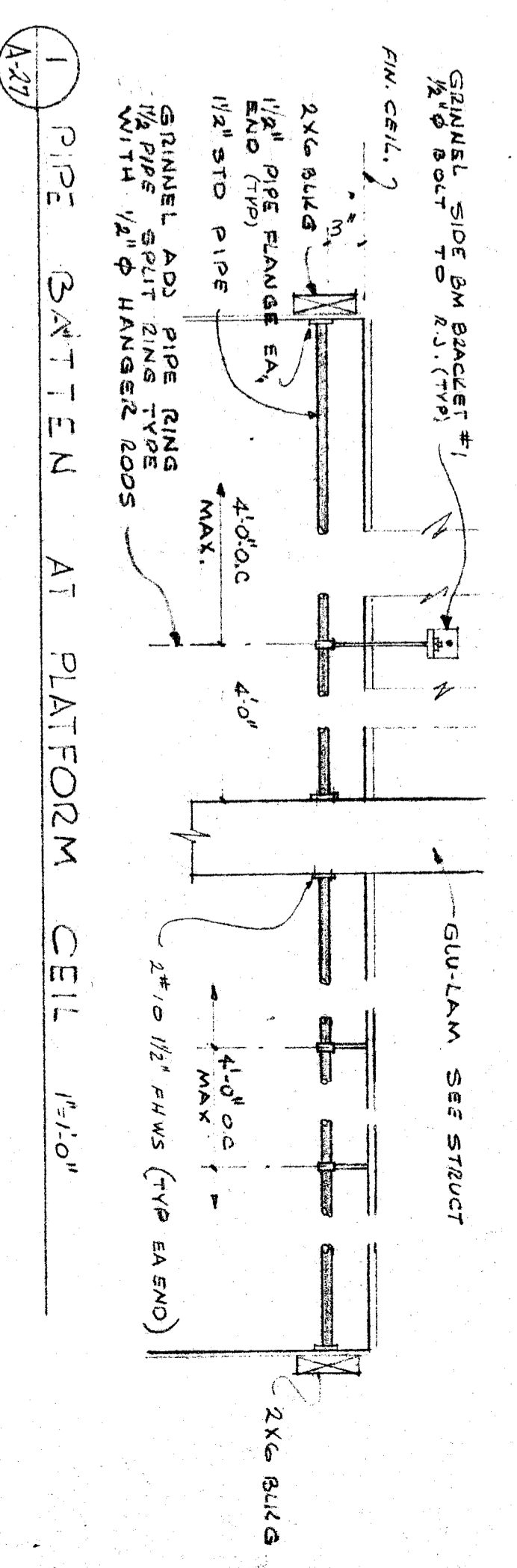
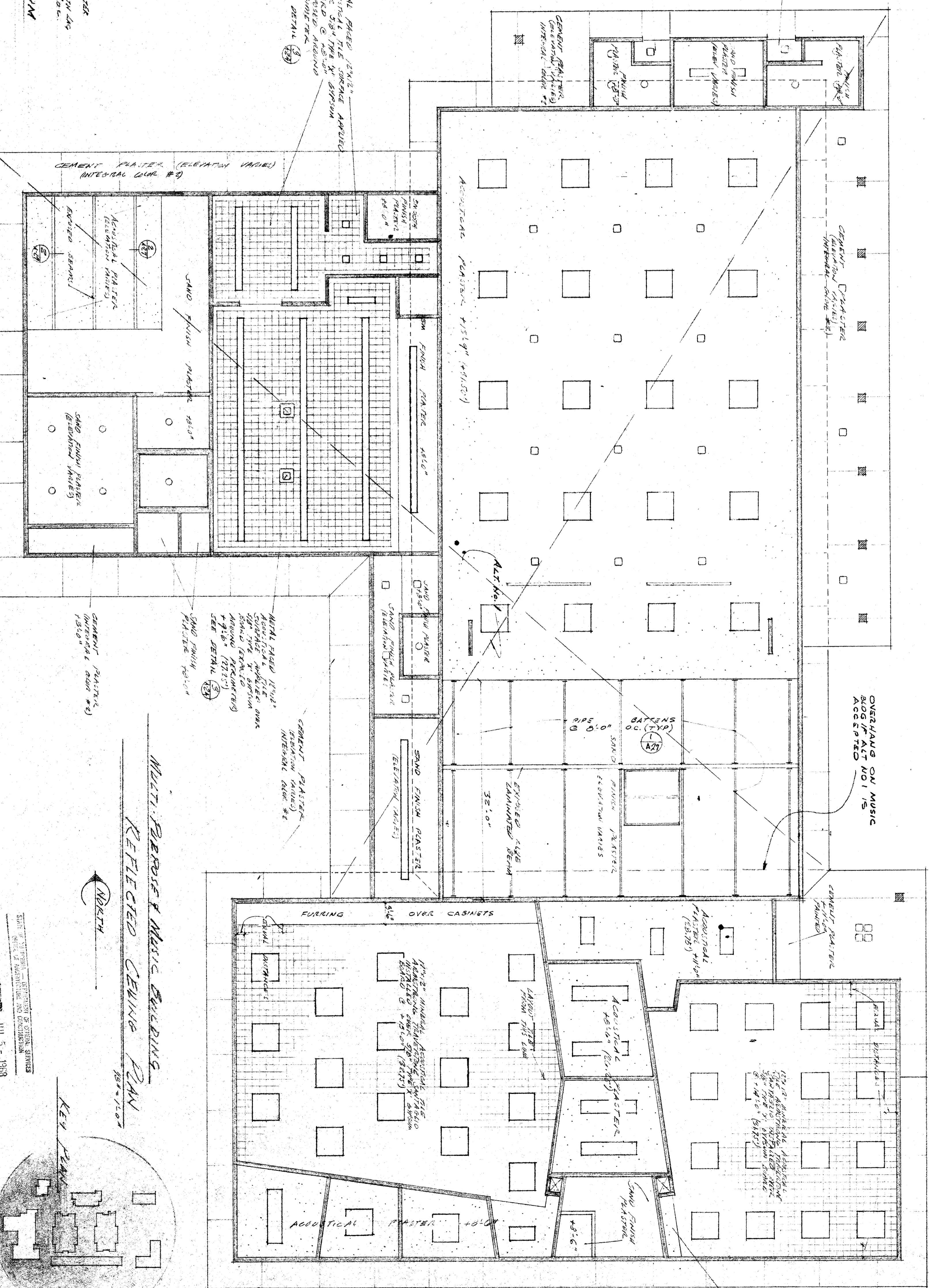
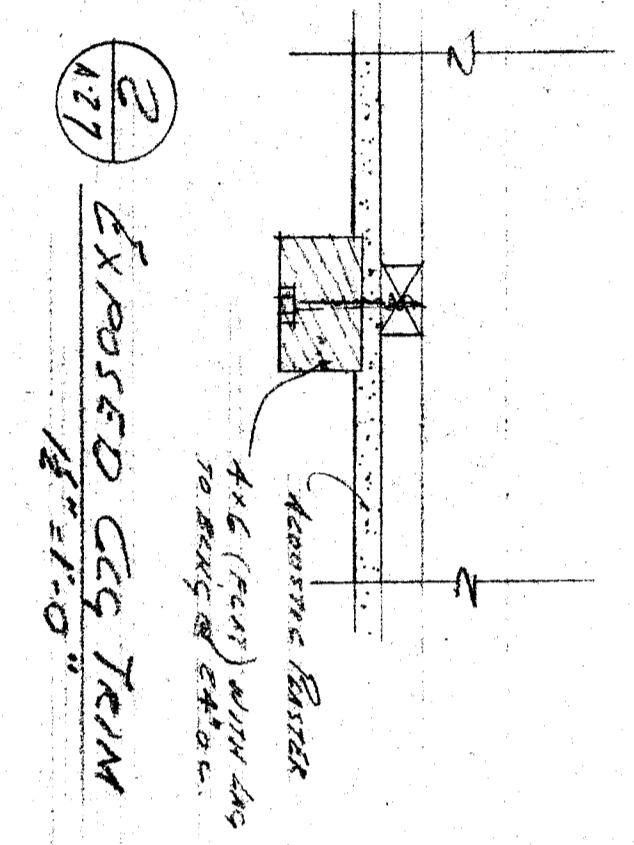


ADMINISTRATION
REFLECTED CEILING PLAN 1/8" = 1'-0"



CHECK AND VERIFY ALL DIMENSIONS AND CONDITIONS AT JOB SITE BEFORE PROCEEDING WITH THE WORK.		REPORT ANY DISCREPANCIES TO THE ARCHITECT.	
SYMBOL	BY	DATE	DRAWN
AS BUILT			
ADDITIONAL			
CHANGES			
CLASSIFICATION			
STATE OF CALIFORNIA STATE FIRE MARSHAL APPROVED UNDER STATUTES OF CALIFORNIA DATE: JUL 5 1938		APPROVED BY: BOARD OF EDUCATION BAKERSFIELD CITY SCHOOL DISTRICT DATE: JUL 5 1938 SUPERVISOR OF SCHOOLS AND DISTRICT OFFICER	
APPROVED - DATE		APPROVED - DATE	
ERNEST L. MCGOY A.I.A. ARCHITECT 2111 N. STREET BAKERSFIELD CALIFORNIA 93303		BERNICE HARELL CHIPMAN JUNIOR HIGH SCHOOL BAKERSFIELD CITY SCHOOL DISTRICT CALIFORNIA	
REFLECTED CEILING PLANS		SHEET NO. 27 OF 34 SHEETS	

300009 APPROVED JUL 5 - 1938
By: [Signature]

