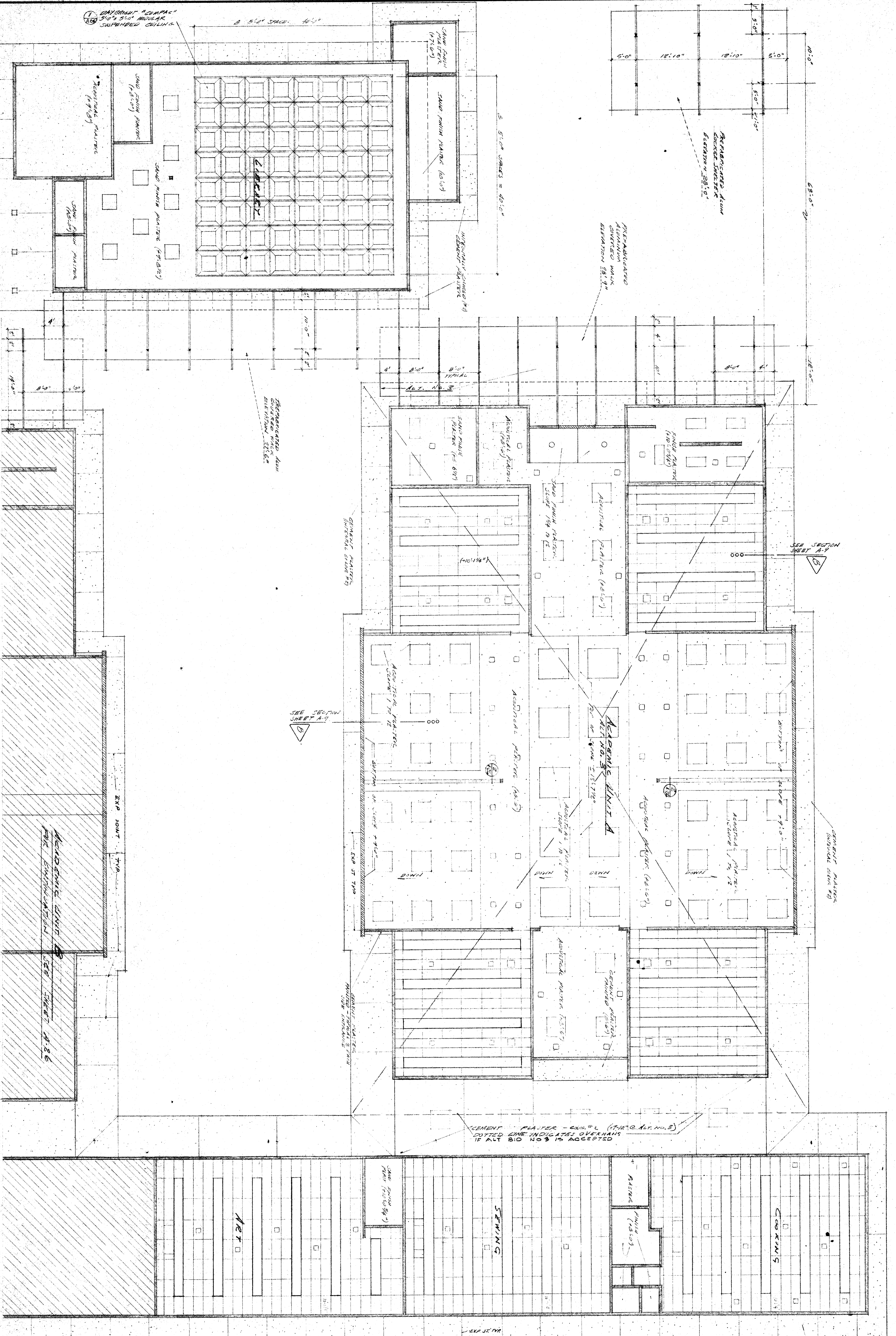


FOR DIMENSIONAL USE SHEET A



REFLECTED CEILING PLAN

KEY PLAN

80 6 0 9 APPROVED JUL 5 - 1938

BERNICE HARELL CHIPMAN JUNIOR HIGH SCHOOL
 BAKERSFIELD CITY SCHOOL DISTRICT
 BAKERSFIELD, CALIFORNIA

ERNEST L. MCGOY AIA ARCHITECT
 2111 N. STREET
 BAKERSFIELD, CALIFORNIA 93303

APPROVED BY BOARD OF EDUCATION
 BAKERSFIELD, CALIFORNIA
 DATE: JUL 5 1938
 SUPERVISOR: [Signature]

APPROVED - DATE

REPORT ANY DISCREPANCIES TO THE ARCHITECT, DRAWN

DATE: APR 2 1938

STATE OF CALIFORNIA
 STATE FIRE MARSHAL
 APPROVED UNDER STUDIES OF CALIFORNIA
 JUL 5 1938

CHECK AND VERIFY ALL DIMENSIONS AND CONDITIONS AT JOB SITE BEFORE PROCEEDING WITH THE WORK.

STUDY	R. E. V. I. S. I. O. N. S.	DATE	APPROVED BY
AS BUILT			
ADDENDUM			
CHANGE ORDER			
CLASSIFICATION			