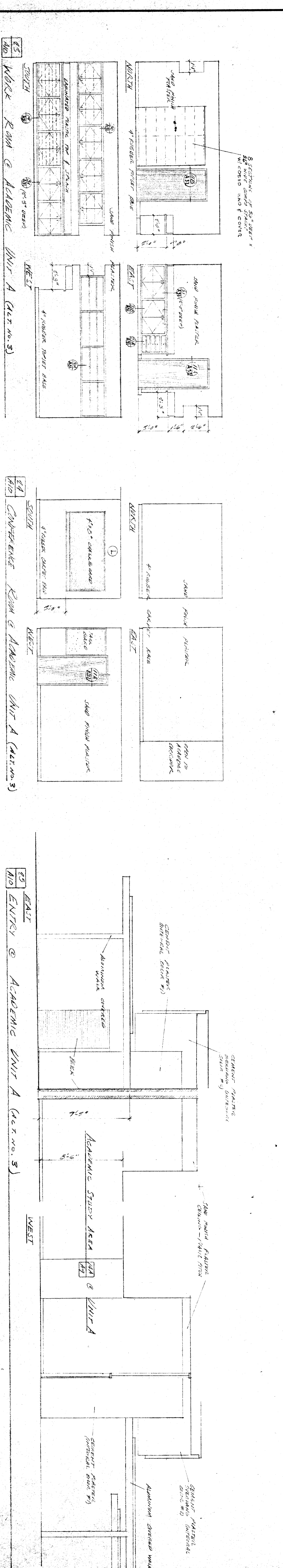


NOTE: UNIT A IS NOT IN 3 SEE E.D. 2003



CHECK AND VERIFY ALL DIMENSIONS AND CONDITIONS AT JOB SITE BEFORE PROCEEDING WITH THE WORK. REPORT ANY DISCREPANCIES TO THE ARCHITECT.

DATE	BY	DATE	BY
APPROVED - DATE	APPROVED - DATE	APPROVED - DATE	APPROVED - DATE

STATE OF CALIFORNIA
STATE FIRE MARSHAL
APPROVED UNDER STATUTES OF CALIFORNIA
JUL 5 1958

APPROVED BY: [Signature]
ERNEST L. MCCOY AIA, ARCHITECT
2811 H STREET
BAKERSFIELD
CALIFORNIA 93303

BERNICE HARELL CHIPMAN
JUNIOR HIGH SCHOOL
BAKERSFIELD CITY SCHOOL DISTRICT
BAKERSFIELD, CALIFORNIA

INTERIOR ELEVATIONS - ACADEMIC UNITS