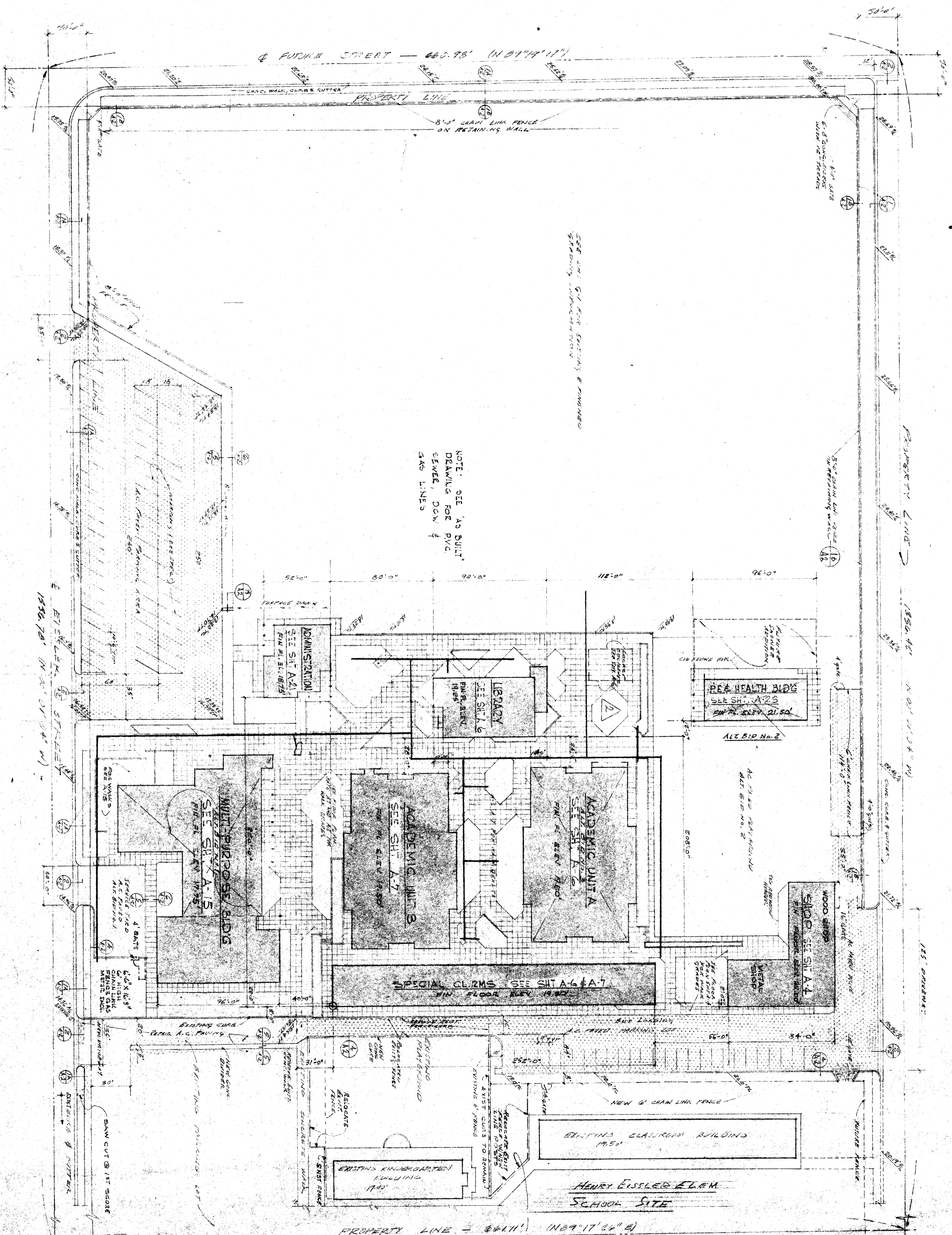


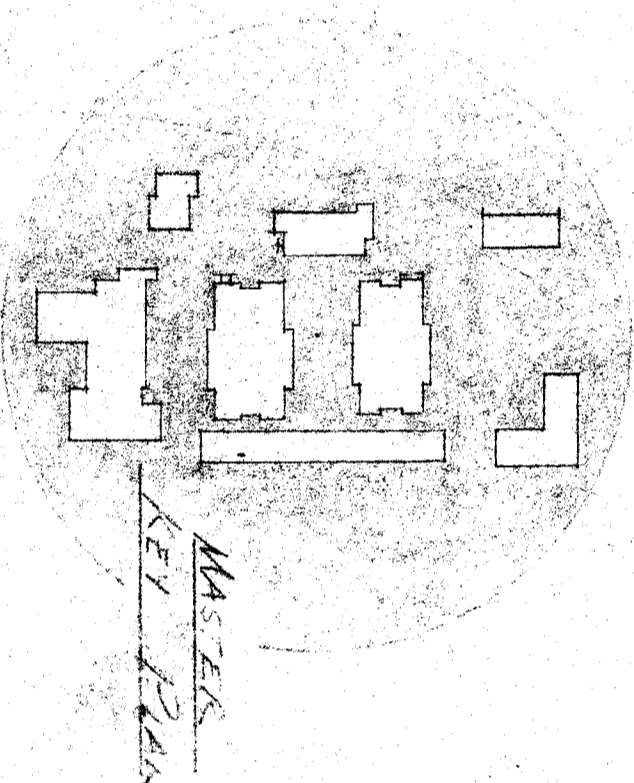
1. SHOWING BUILDINGS & ADJACENT AREAS IN ALTERNATE BIDS SEE LEGEND BELOW  
 2. REFER TO ARCH. STUDENT MECH & ELEC PLANS FOR FURTHER AMPLIFICATION OF THE VARIOUS ALT. BIDS

PART 1 PLAN

- LEGEND ALTERNATE BIDS (SEE NOTE 12 ABOVE)
- ALTERNATE BID NO. 1
  - ALTERNATE BID NO. 2
  - ALTERNATE BID NO. 3



NOTE: SEE 'AS BUILT' DRAWING FOR P.V.C. SEWER, D.W.V. & SAN LINES



NOTE: ALL CONCRETE WALLS WITHIN PROPERTY SHALL BE SUBGRADE OVER A 6" MIN. 'INSUREM' MEMBRANE WITH ALL JOINTS LAPPED

30609 APPROVED JUL 3 - 1984

CHECK AND VERIFY ALL DIMENSIONS AND CONDITIONS AT JOB SITE BEFORE PROCEEDING WITH THE WORK.		REPORT ANY DISCREPANCIES TO THE ARCHITECT.		DATE: APR 22 1984
REVISIONS	DATE	APPROVED BY	DATE	
AS BUILT		ERNEST L. MCGOY AIA		
CHANGES ORDER				
CANCELLATION				

STATE OF CALIFORNIA  
 STATE FIRE MARSHAL  
 APPROVED UNDER STATUTE OF CALIFORNIA

APPROVED - DATE

ERNEST L. MCGOY AIA ARCHITECT  
 BAKERSFIELD CITY SCHOOL DISTRICT  
 BAKERSFIELD, CALIFORNIA 93309

BERNICE HARELL CHIPMAN  
 JUNIOR HIGH SCHOOL  
 BAKERSFIELD CITY SCHOOL DISTRICT  
 BAKERSFIELD, CALIFORNIA