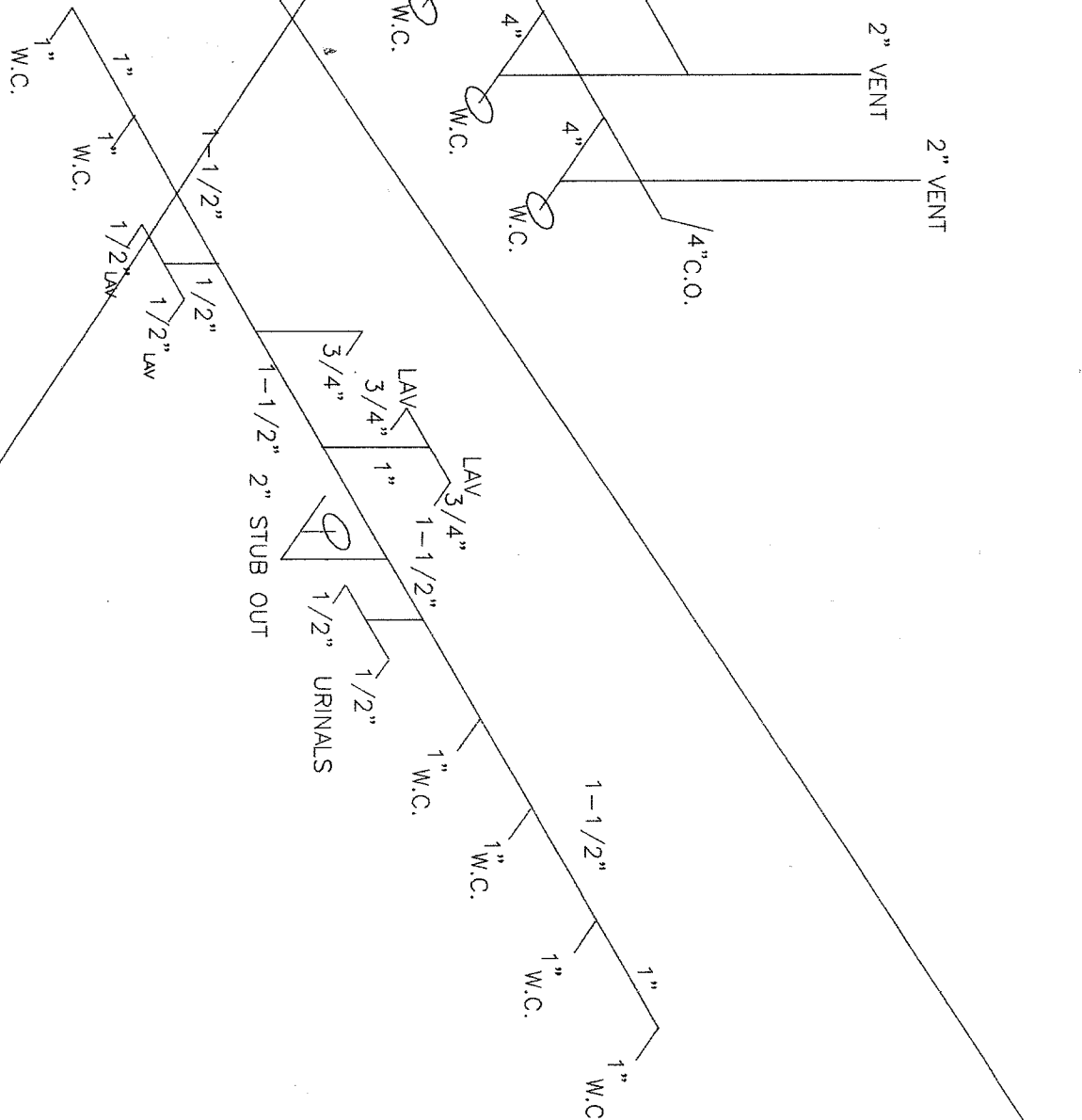


WASTE AND VENTS ISOMETRIC

N.T.S.

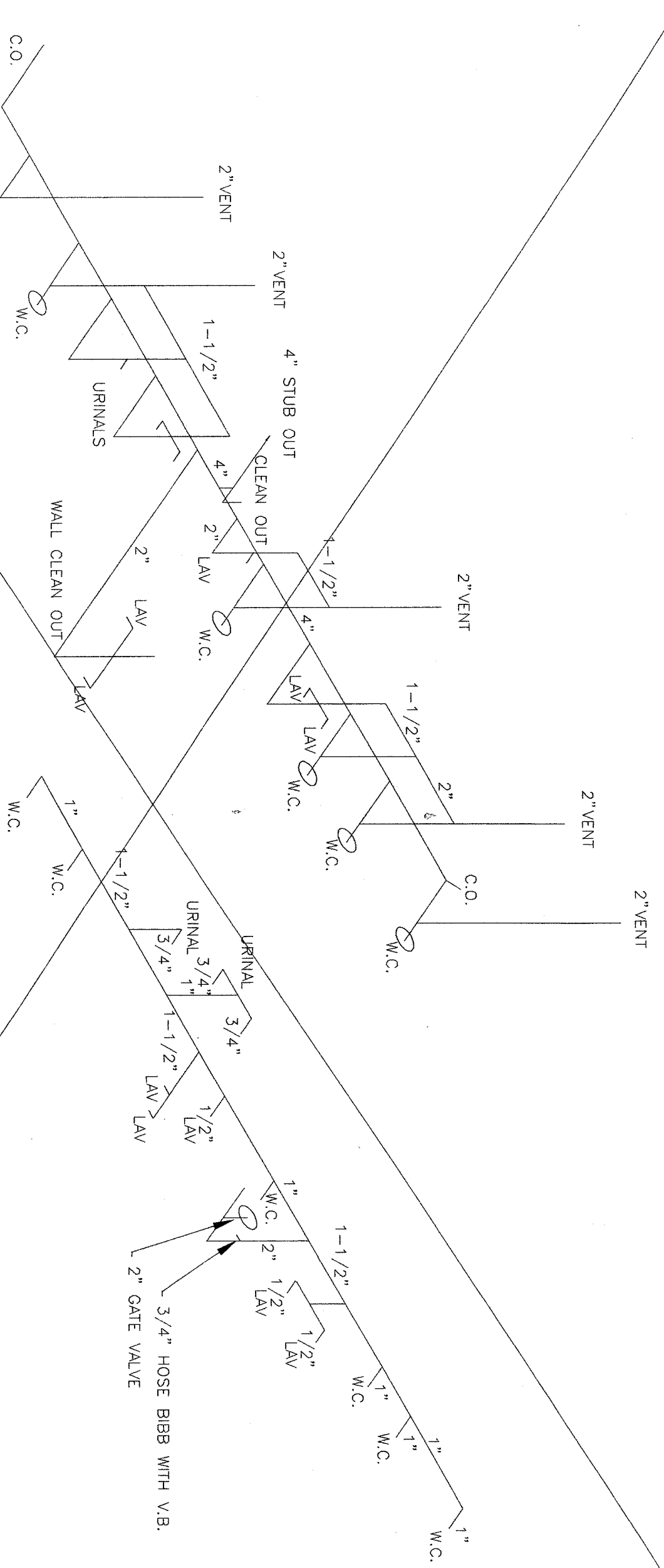
1
M1A
ALTERNATE #1



WATERLINE ISOMETRIC

N.T.S.

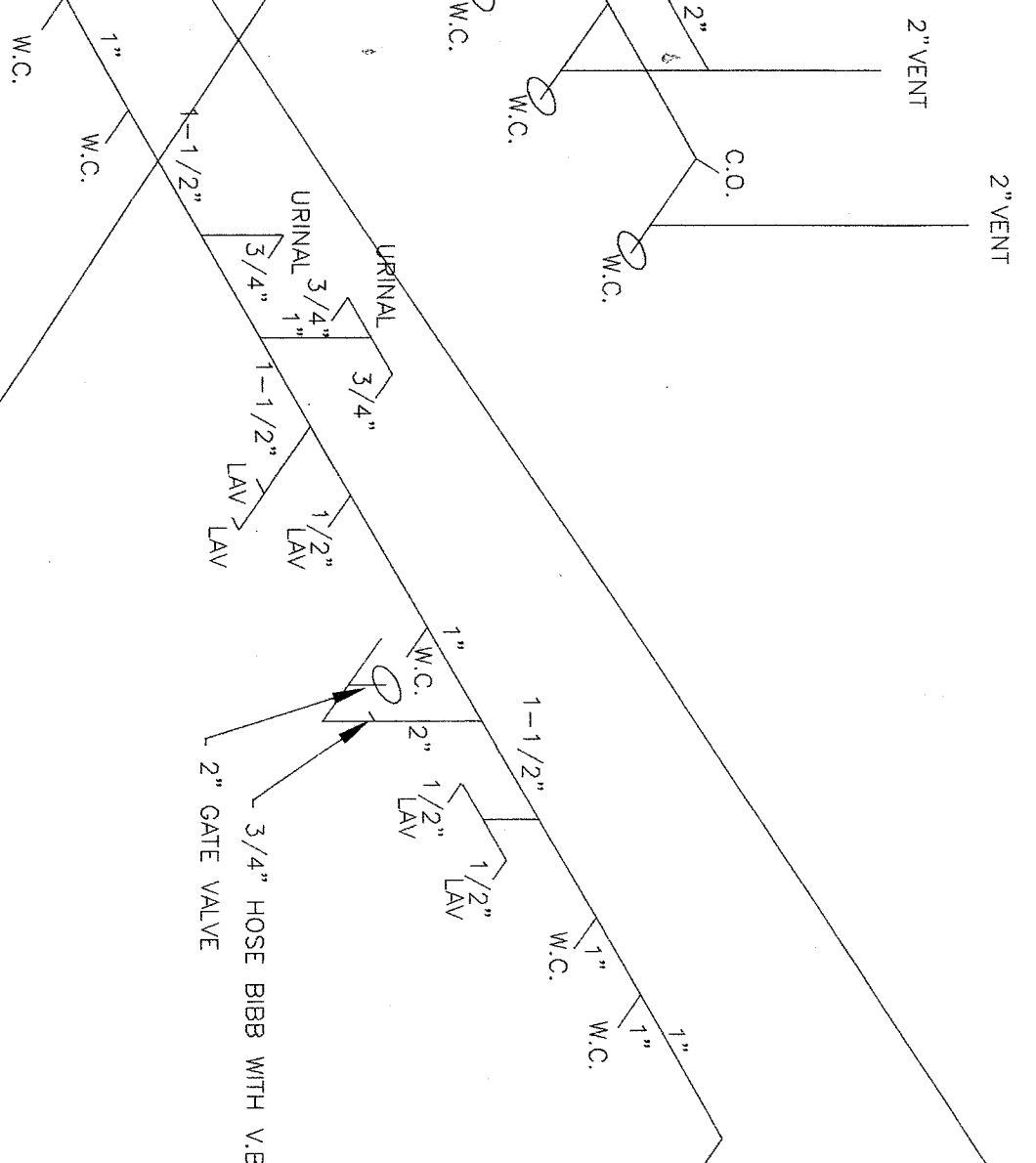
1
M1A
ALTERNATE #1



WASTE AND VENTS ISOMETRIC

N.T.S.

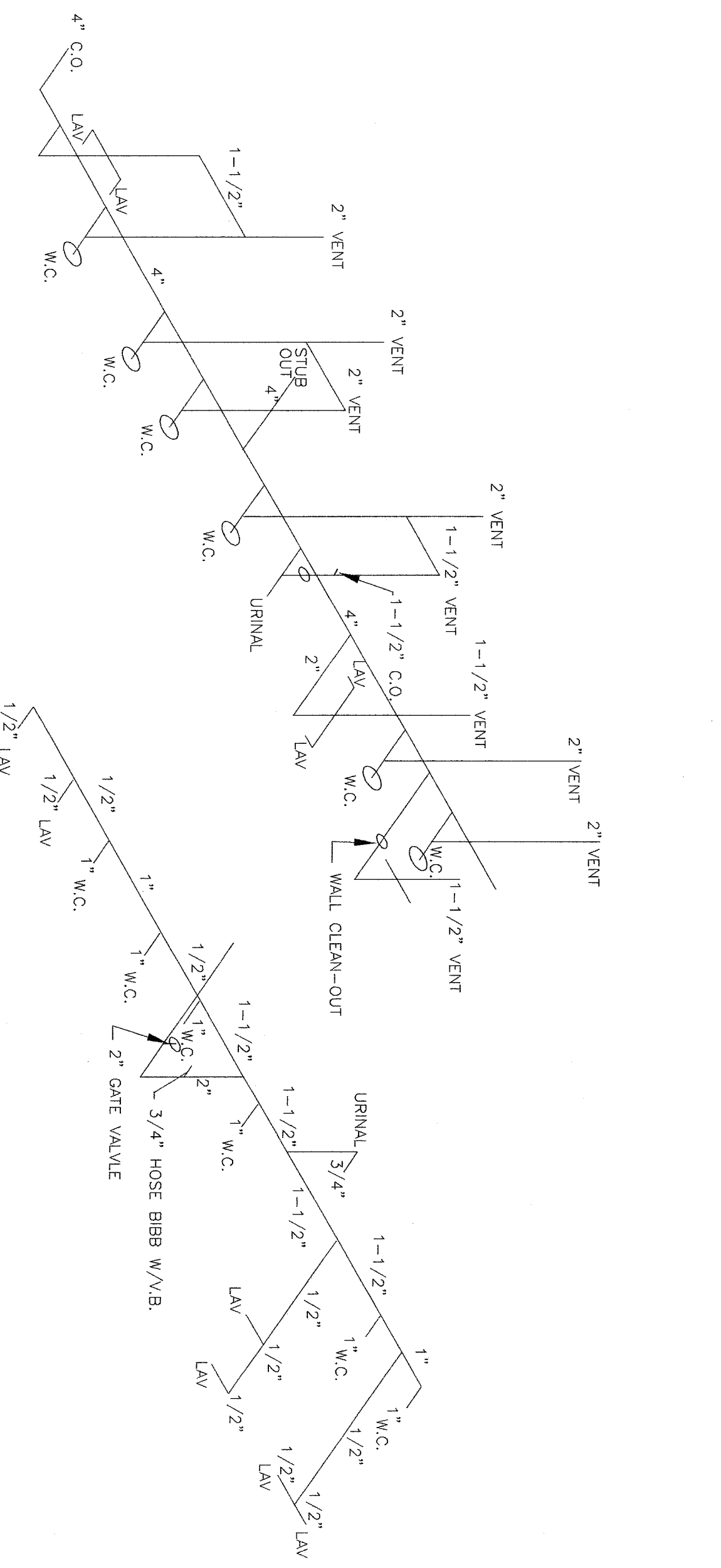
2
M1A
ALTERNATE #2



WATERLINE ISOMETRIC

N.T.S.

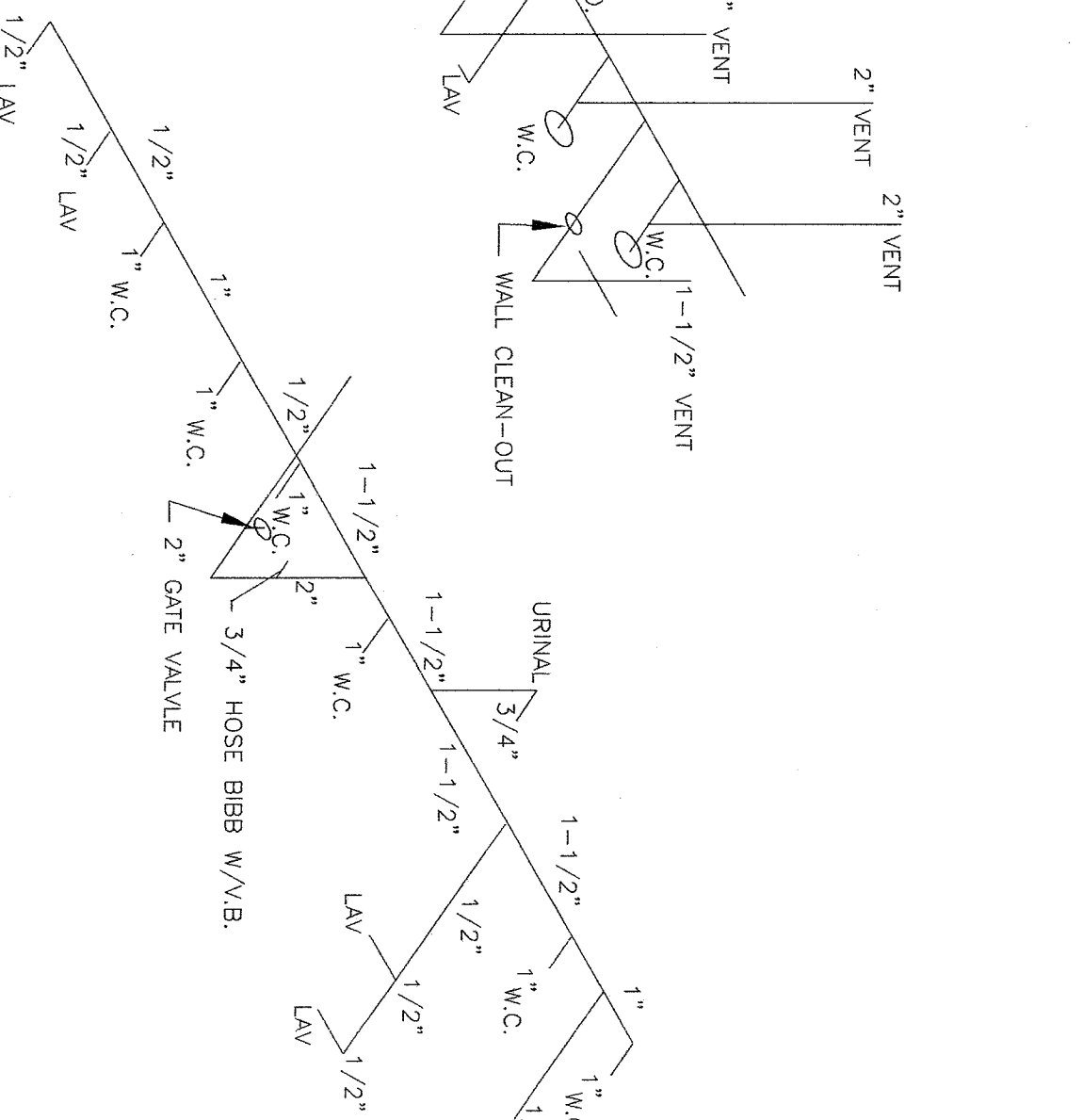
2
M1A
ALTERNATE #2



WASTE AND VENTS ISOMETRIC

N.T.S.

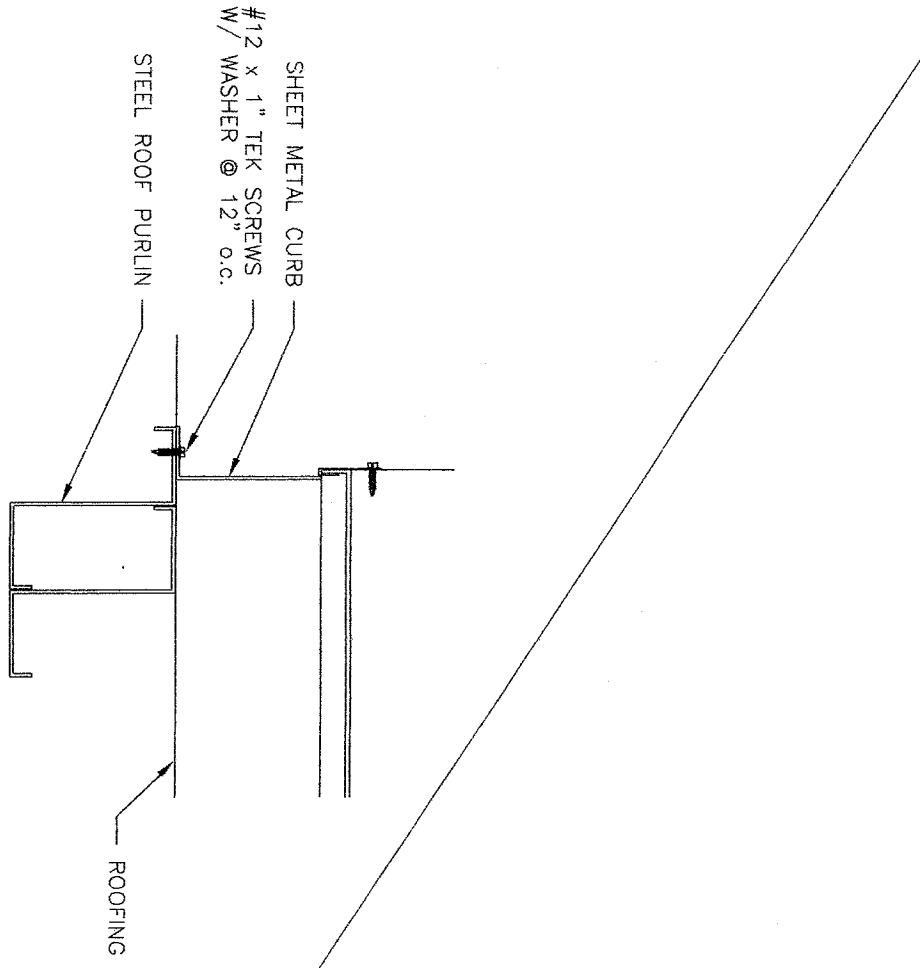
3
M1A
ALTERNATE #3



WATERLINE ISOMETRIC

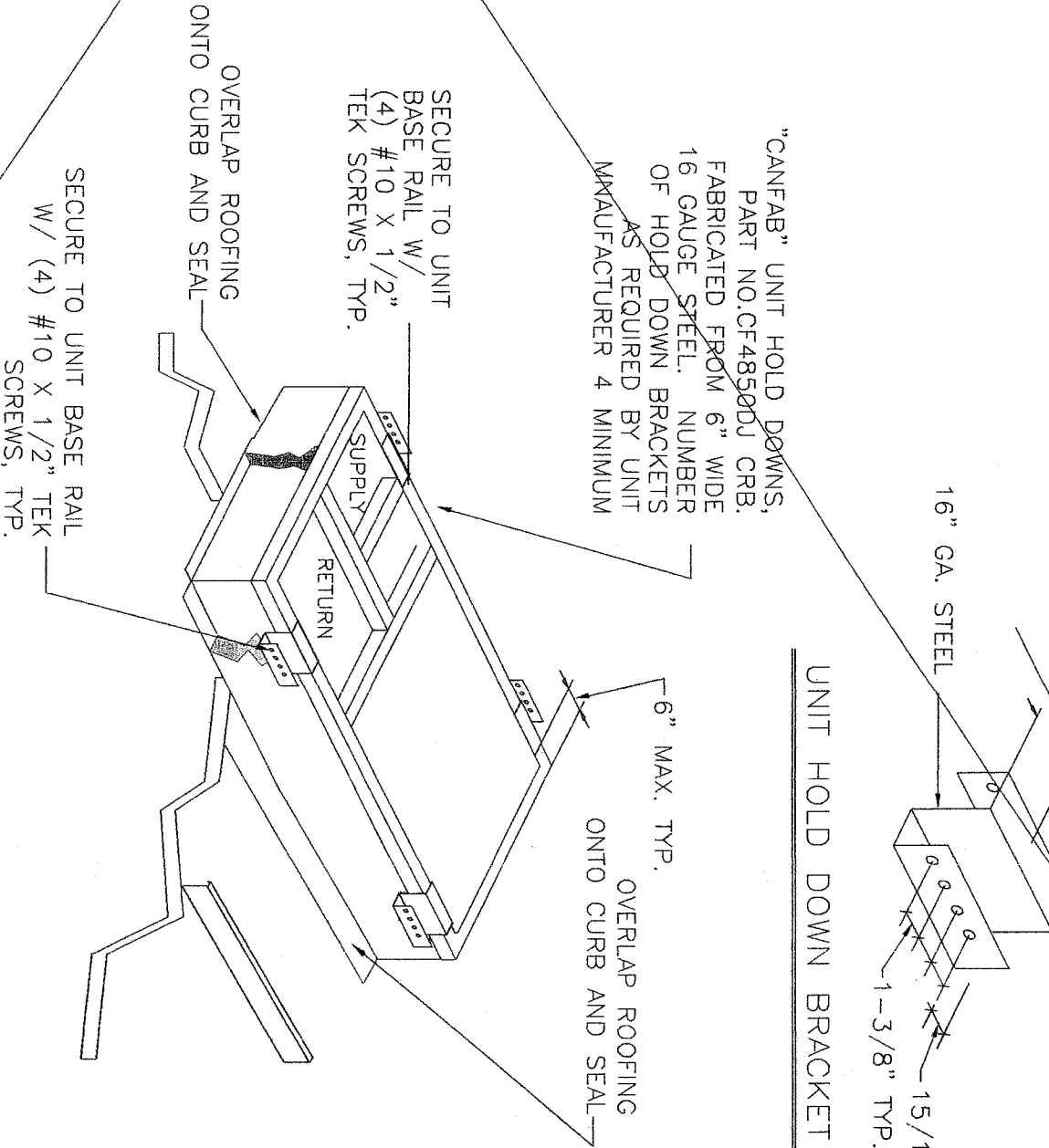
N.T.S.

3
M1A
ALTERNATE #3

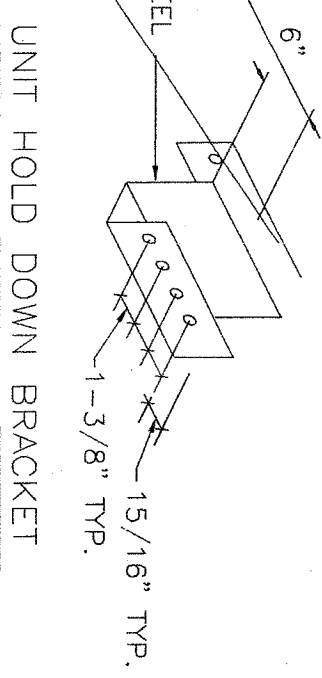


4
M1A
HVAC MOUNTING DETAIL TO ROOF

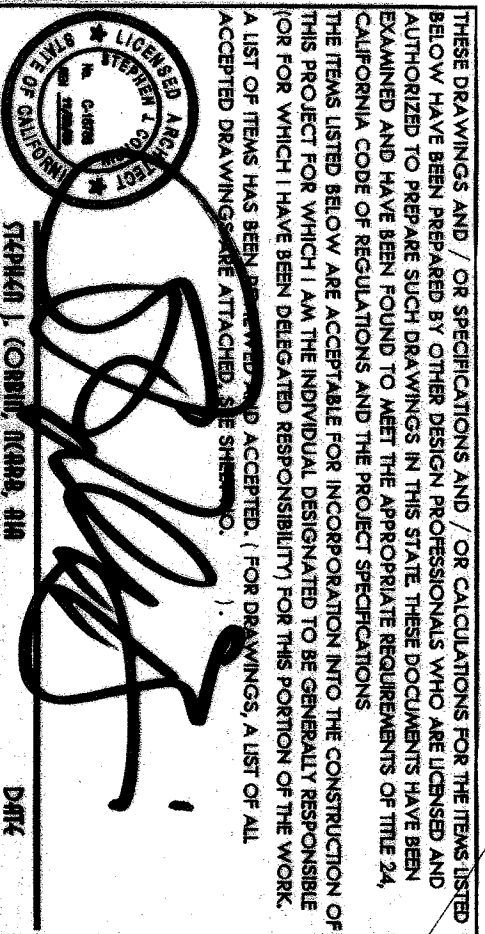
SCALE: 1/2"=1'-0"



5
M1A
ROOF MOUNTED HVAC (OPTIONAL)



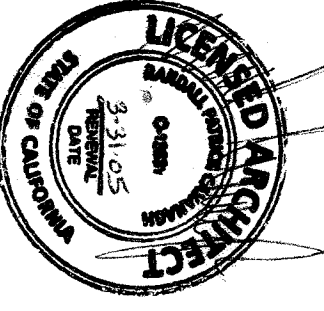
UNIT HOLD DOWN BRACKET



BASED ON PC 02-104931

FILE NO.
DIVISION STAMP
OFFICE OF REGULATION SERVICES
DATE: JAN 27 2003
AC: FLS: SS:

IDENTIFICATION STAMP
DIV. OF THE STATE ARCHITECT
APPROX 104224
AC 6/4/03 RS 6/4/03 KC/
DATE JAN 27 2003



AMS
American Modular Systems, Inc.
707 S. Bascom Ave., Suite 200
Palo Alto, CA 94308
(650) 962-1921 Fax (650) 962-7019
americanmodular.com

CUSTOMER:
BAKERSFIELD CITY SCHOOL DISTRICT

ISOMETRIC PLANS & DETAILS

DATE: 10-31-03
SCALE: NONE
DRAWN BY: M.H.
CHECKED BY: *
SERIAL NO.

NO.	DATE	DESCRIPTION	NO.	DATE	DESCRIPTION
1					
2					
3					
4					
5					

PROJECT NO.
SHEET NO.
M1A