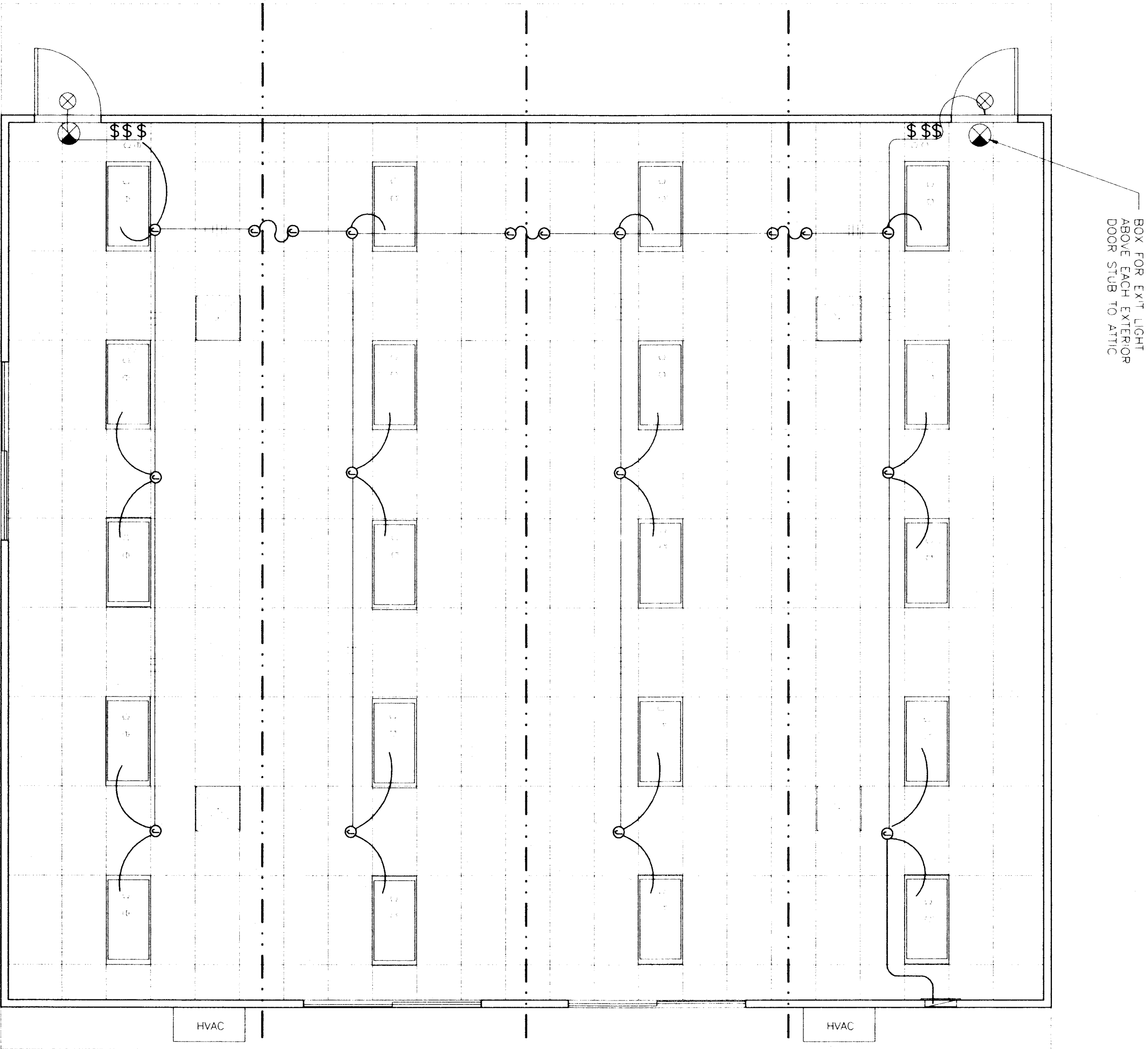


SYMBOL	DESCRIPTION	WATTS	MANUFACTURER
	2'x4' FLUORESCENT DROP IN FIXTURE, ACRYLIC PRISMATIC LENS, ENERGY SAVING BALLAST, (4)35 WATT TUBES, WT. 27 LBS.	156 W	CRESCENT 24TF440DLA
	7 WATT SURFACE MOUNTED EXTERIOR LIGHT WITH IMPACT RESISTANT ENCLOSURE, .125 THICK CLEAR PRISMATIC ONE PIECE LENS W/ NEOPRENE GASKET & "POSIGRIP" STAINLESS STEEL SCREWS	(2) 7 WATT	KEMALL OR HUBBELL

SEE TYPICAL CLASSROOM LAYOUT FOR LOCATIONS OF ALL DEVICES.  
FIXTURE MOUNTING SHALL COMPLY WITH CALIFORNIA SEISMIC REGULATIONS.



1 LIGHT FIXTURE PLAN  
E1 1/4" = 1'-0"

**American**  
Modular Systems

# STANDARD ELECTRICAL SYMBOLS

- FLUORESCENT LIGHTING FIXTURE - SURFACE MOUNTED.
- FLUORESCENT LIGHTING FIXTURE - RECESSED.
- H.P.S. LIGHTING FIXTURE - WALL MOUNTED (EXTERIOR).
- INCANDESCENT LIGHTING FIXTURE - WALL MOUNTED (INTERIOR).
- DUPLEX WALL CONVENIENCE OUTLETS +18" TO CENTER LINE.
- SINGLE POLE LIGHT SWITCHES +48" HUBBELL PREVIOUS, BRYANT HEAVY DUTY, OR LEVITON SPECIFICATIONS GRADE.
- ELECTRICAL Crossover J-BOXES ABOVE 1'-4"x1' #22 4"x2."
- WALL CLOCK OUTLET WITH POWER OUTLET +84".
- SWITCH SUBSCRIPTS - a=DEVICE CONTROLLED.
- 15 AMP DUPLEX RECEPTACLE +18" TO CENTER LINE.
- JUNCTION BOX - SIZE AND TYPE AS REQUIRED.
- PANELBOARD - SEE SCHEDULE.
- TERMINAL CABINET - SIZE AND TYPE AS NOTED.
- CONDUIT CONCEALED IN CEILING OR WALL.
- CONDUIT CONCEALED BELOW FLOOR OR GRADE.
- HOMERUN TO RESPECTIVE PANEL TO TERMINAL.
- INDICATES #14 (GREEN) GROUND WIRE, OTHER SIZES AS INDICATED.
-