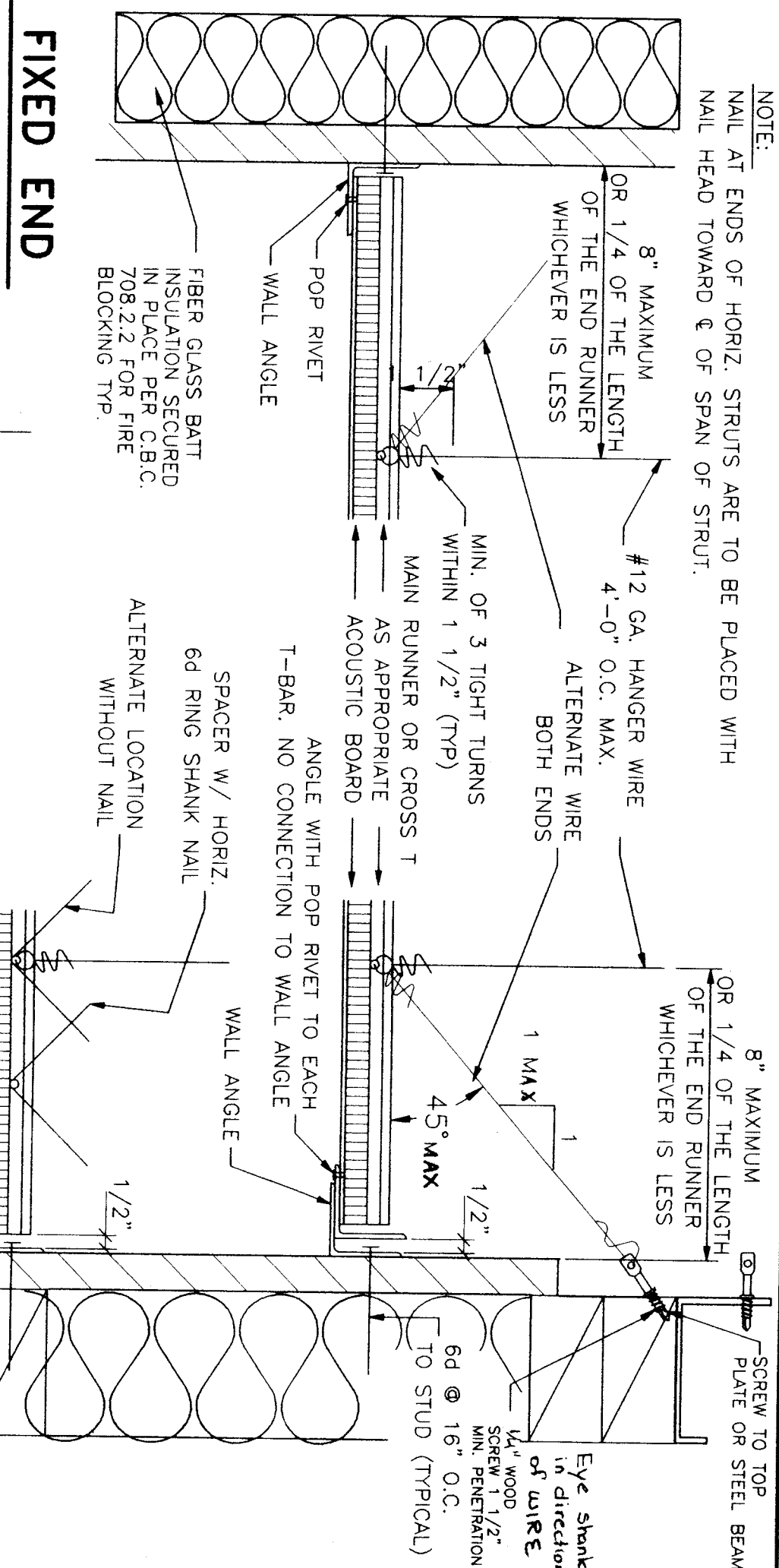
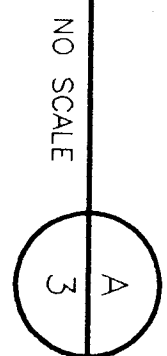
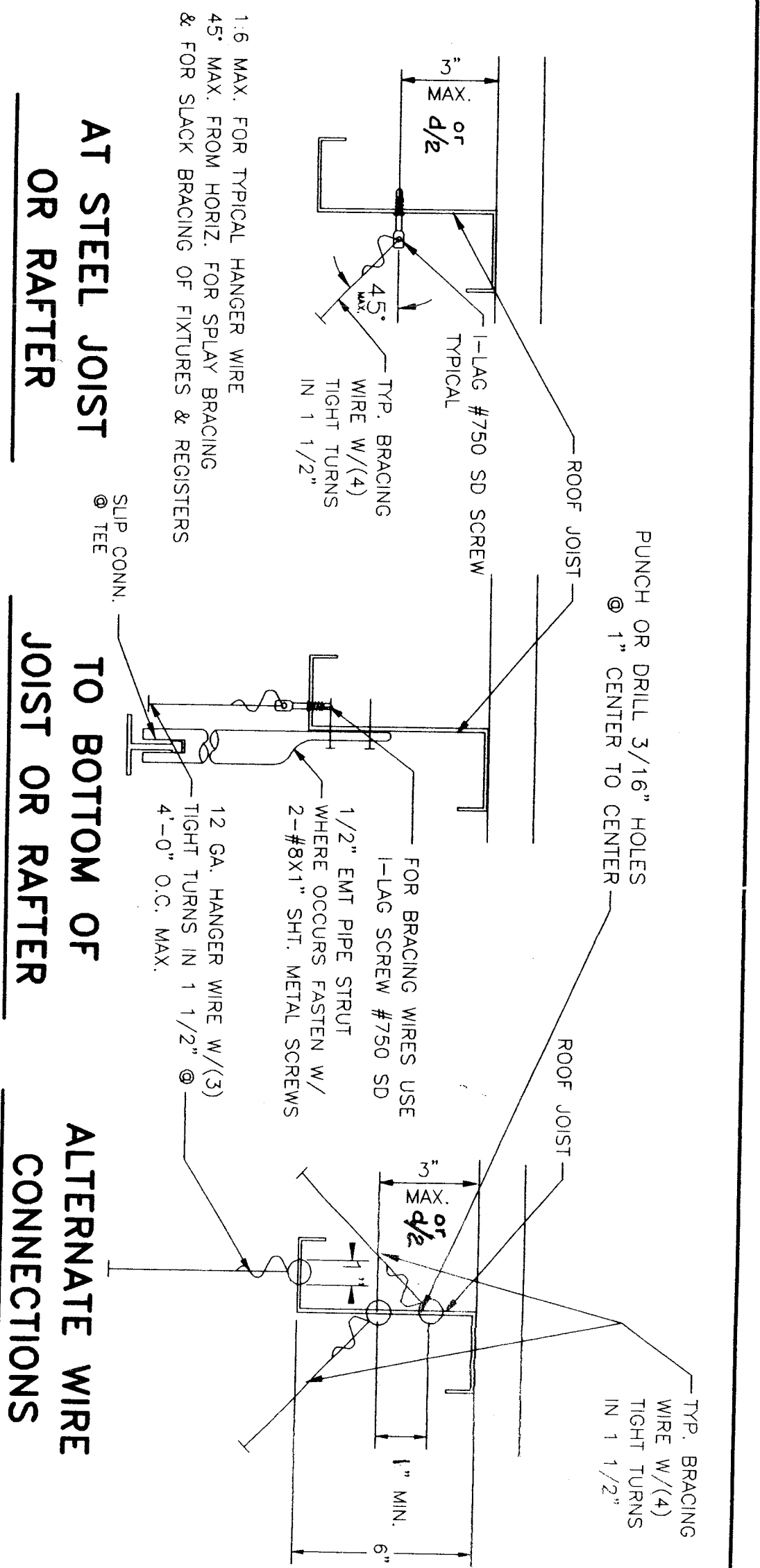


NOTE: SPLAYED BRACING WIRES SHALL BE SPACED NOT MORE THAN 12 FT. ON CENTER, OR MORE THAN 6 FT. FROM WALLS.

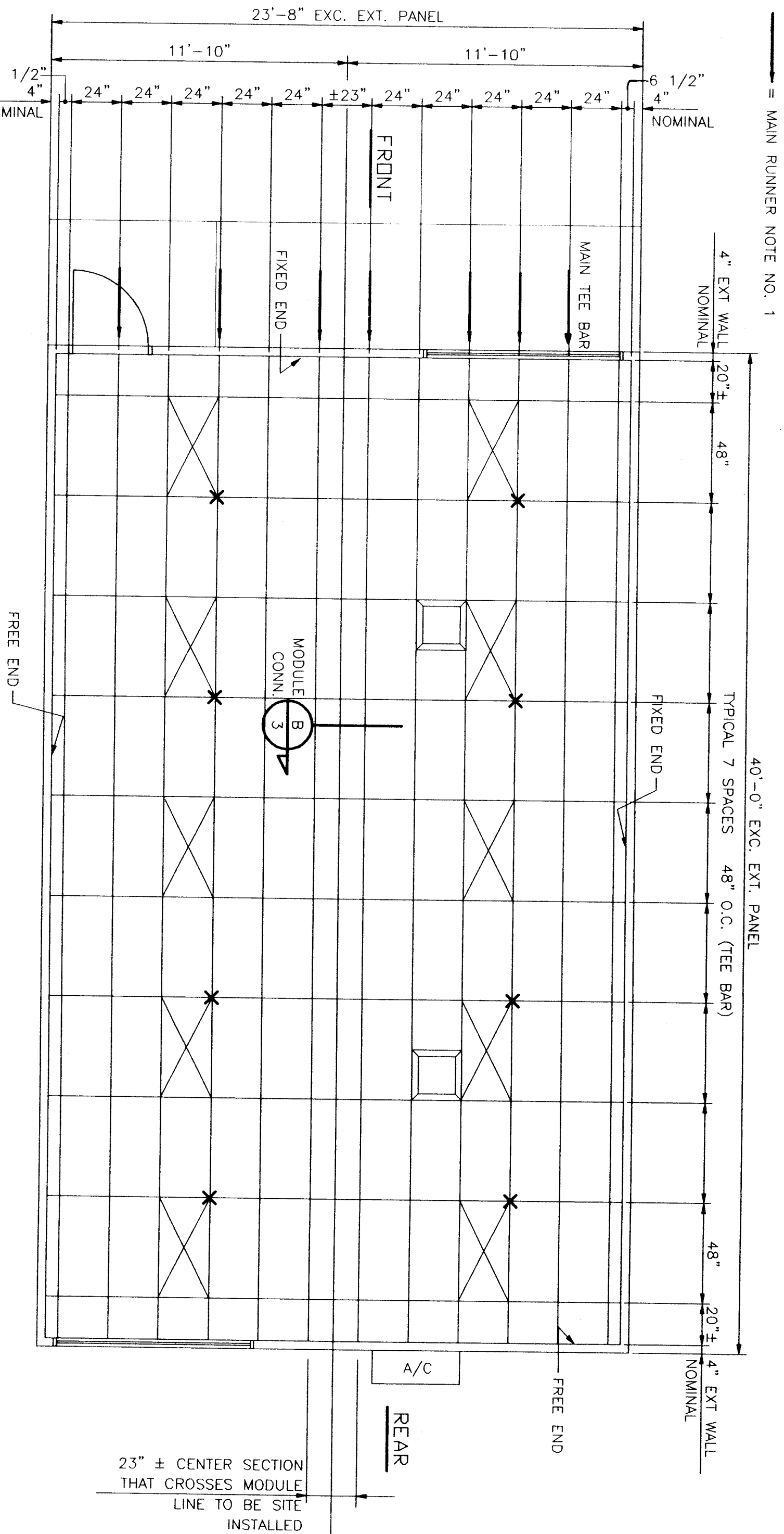
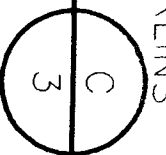
ATTACHMENT FOR CEILING GRID
DETAIL
NO SCALE



MODULE LINE "T" GRID
WIRE CONNECTIONS TO GRID
DETAILS
NO SCALE



TO BOTTOM OF JOIST OR RAFTER
DETAIL
NO SCALE

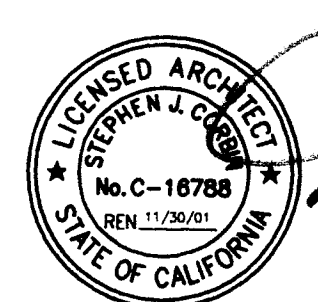


CEILING TEE BAR GRID LAYOUT WITH LIGHT FIXTURES

SCALE: 1/4"=1'-0"

THESE DRAWINGS AND / OR SPECIFICATIONS AND / OR CALCULATIONS FOR THE ITEMS LISTED BELOW HAVE BEEN PREPARED BY OTHER DESIGN PROFESSIONALS WHO ARE LICENSED AND AUTHORIZED TO PREPARE SUCH DRAWINGS IN THIS STATE. THESE DOCUMENTS HAVE BEEN EXAMINED BY ME AND HAVE BEEN FOUND TO MEET THE APPROPRIATE REQUIREMENTS OF TITLE 24, CALIFORNIA CODE OF REGULATIONS AND THE PROJECT SPECIFICATIONS PREPARED BY THE ARCHITECT. I AM NOT PROVIDING ANY GUARANTEE OR WARRANTY FOR THE WORK.

THE ITEMS LISTED BELOW ARE ACCEPTABLE FOR INCORPORATION INTO THE CONSTRUCTION OF THIS PROJECT FOR WHICH I AM THE INDIVIDUAL DESIGNATED TO BE IN GENERAL RESPONSIBLE CHARGE (OR FOR WHICH I HAVE BEEN DELEGATED RESPONSIBILITY FOR THIS PORTION OF THE WORK). I HAVE NOT CONDUCTED ANY VISUAL OR PHYSICAL INSPECTION OF THE WORK. A LIST OF ITEMS HAVE BEEN REVIEWED AND ACCEPTED. (FOR DRAWINGS, A LIST OF ALL ACCEPTED DRAWINGS ARE ATTACHED, SEE SHEET NO. 3)



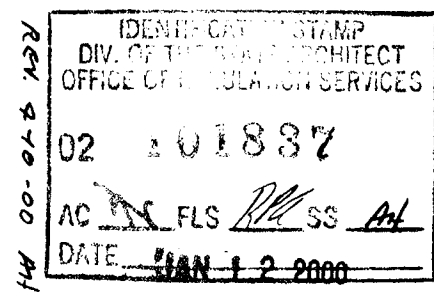
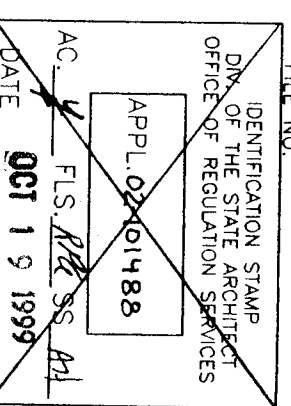
LICENSE # C-16786
EXP. DATE 11/30/01

- 12 GA. (GND) HANGER WIRES MAY BE USED FOR UP TO AND INCLUDING 4'-0" X 4'-0" GRID SPACING, ALONG MAIN RUNNER. SPLICES WILL NOT BE PERMITTED IN ANY HANGER WIRES UNLESS SPECIFICALLY APPROVED BY DSA.
- PROVIDE 12 GA. HANGER WIRES WITHIN 8" OF THE ENDS OF ALL MAIN AND CROSS RUNNERS OR AT 1/4 OF THE LENGTH OF THE END TEE, WHICHEVER IS LESS AT THE PRIMER OF THE CEILING AREA.
- PROVIDE TRAPEZE OR OTHER SUPPLEMENTARY SUPPORT MEMBERS AT OBSTRUCTIONS TO MAINTAIN HANGER SPACING. PROVIDE ADDITIONAL HANGERS, STRUTS OR BRACES AS REQUIRED AT ALL CEILING BREAKS, SOFFITS OR DISCONTINUOUS AREA. HANGER WIRES THAT ARE MORE THAN 1" IN 6 OUT OF PLUMB ARE TO HAVE COUNTERBRACED WIRES.
- CEILING GRID MEMBERS MAY BE ATTACHED TO NOT MORE THAN 2 ADJACENT WALLS. CEILING GRID MEMBERS SHOULD BE AT LEAST 1/2" INCH FREE OF OTHER WALLS. *It walls run diagonally to ceiling and system runners, one end of main and cross runners should be FREE AND A MINIMUM OF 1/2" INCH CLEAR OF WALL.*
- AT THE PRIMER OF THE CEILING AREA WHERE MAIN OR CROSS RUNNERS ARE NOT CONNECTED TO THE ADJACENT WALL, PROVIDE INTERCONNECTION BETWEEN THE RUNNERS AT THE FREE END TO PREVENT LATERAL SPREADING. A MECHANICAL CONNECTION TO THE RUNNERS MAY BE USED, WHERE THE PERPENDICULAR DISTANCE FROM THE WALL TO THE FIRST PARALLEL RUNNERS IS 12" OR LESS. THIS INTERLOCK IS NOT REQUIRED.
- PROVIDE SETS OF 4-#12 GA. SPLAYED BRACING WIRES FOLLOWING 90 DEGREES FROM EACH OTHER AT THE FOLLOWING SPACING:
 - (A) FOR SCHOOL BUILDINGS, PLACE SETS OF SPLAY WIRES AT A SPACING NOT MORE THAN 12 FEET BY 12 FEET ON CENTER
 - (B) THE ABOVE SPACING FROM EACH PERIMETER WALL OR AT THE EDGE OF VERTICAL CEILING OFFSETS
- THE SLOPE OF THESE WIRES SHOULD NOT EXCEED 45 DEGREES FROM THE PLANE OF THE CEILING AND SHOULD BE TAUT WITHOUT CAUSING THE CEILING TO LIFT. SPLICES IN BRACING WIRES ARE NOT PERMITTED WITHOUT SPECIAL DSA APPROVAL.
- FASTEN HANGER WIRES WITH NOT LESS THAN 3 TIGHT TURNS. FASTEN SPLAY WIRES WITH 4 TIGHT TURNS. MAKE ALL TIGHT TURNS WITHIN A DISTANCE OF 1 1/2 INCHES. HANGER OR BRACING WIRE ANCHORS TO THE STRUCTURE SHOULD BE INSTALLED IN SUCH A MANNER THAT THE DIRECTION OF THE WIRE ALIGNS AS CLOSELY AS POSSIBLE WITH THE DIRECTION OF THE FORCES ACTING ON THE WIRE.
- SEPARATE ALL CEILING HANGING AND BRACING WIRES AT LEAST 6 INCHES FROM ALL UNBRACED DUCTS, PIPES, CONDUIT ETC., IT IS ACCEPTABLE TO ATTACH LIGHT-WEIGHT ITEMS, SUCH AS SINGLE ELECTRICAL CONDUIT NOT EXCEEDING 3/4" NOMINAL DIAMETER, TO HANGER WIRES USING CONNECTORS ACCEPTABLE TO DSA.
- ATTACH ALL LIGHT FIXTURES AND AIR TERMINALS TO THE CEILING GRID RUNNERS TO RESIST A HORIZONTAL FORCE EQUAL TO THE WEIGHT OF THE FIXTURES.
- FLOSH OR RECESSED LIGHT FIXTURES AND AIR TERMINALS OR SERVICES WEIGHING LESS THAN 56 POUNDS MAY BE SUPPORTED DIRECTLY ON THE RUNNERS OF A HEAVY DUTY GRID SYSTEM BUT, IN ADDITION, THEY MUST HAVE A MINIMUM OF 2-#12 GA. SLACK SAFETY WIRES ATTACHED AT DIAGONAL CORNERS AND ANCHORED TO THE STRUCTURE ABOVE.
- CLASSIFICATION OF CEILING GRID IS "HEAVY DUTY" PER ASTM C635
- MANUFACTURER'S CATALOG NUMBER - MAIN RUNNER HEAVY DUTY MAIN TEE OR EQUAL PER TABLE A.
- MANUFACTURER'S CATALOG NUMBER - CROSS RUNNER PER TABLE A.

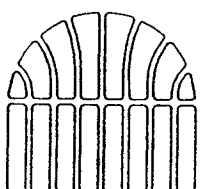
TABLE A HEAVY DUTY GRID COMPONENTS

MANUFACTURER	MAIN TEE	H.D. 4" CROSS TEE	H.D. 2" CROSS TEE
DOWN/J&S	DX-424	DX-424	DX-218
ARMSTRONG	7301	7341	7323
CHICAGO MET.	200-01	1204-01	1226-01

NOTE: ALL GRID COMPONENTS SHALL BE BY SAME MANUFACTURER



24 X 40
RELOCATABLE
CLASSROOMS



American
Modular Systems

333 EAST CARNEGIE CT. MANTeca, CALIFORNIA 95337
PHONE (209) 825-1921 FAX (209) 825-7018

CUSTOMER:

CEILING GRID, DETAILS AND NOTES

DATE: 10-19-99
SCALE: NONE
DRAWN BY: R.S.
CHECKED BY:
SERIAL NO.

REVISIONS

NO.	DATE	DESCRIPTION	NO.	DATE	DESCRIPTION
1			1		
2			2		
3			3		

PROJECT NO.

SHEET NO. 3