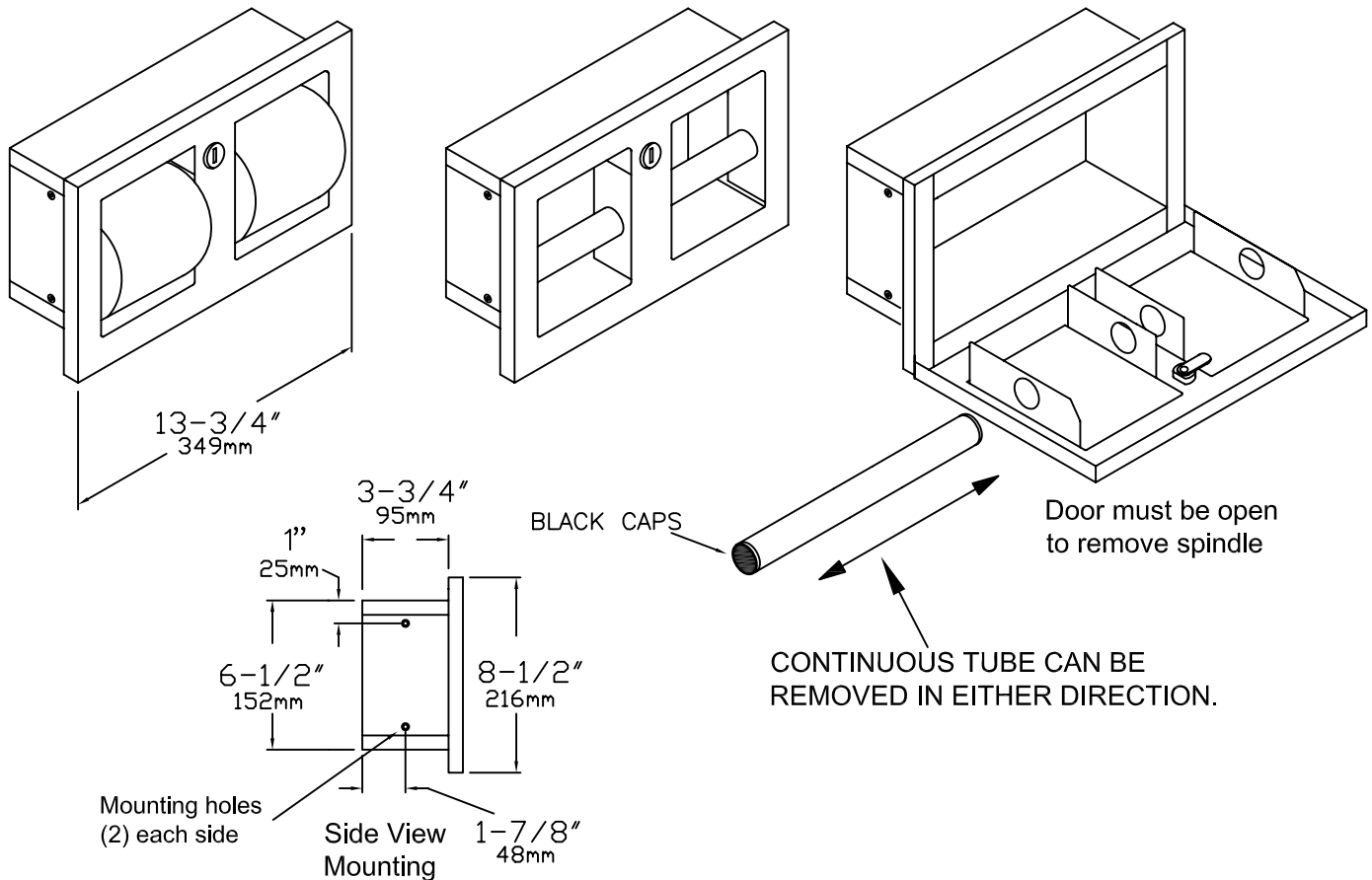




## TTD-9 RECESSED MULTI-ROLL TOILET TISSUE DISPENSER



### Specifications:

Unit fabricated of type 304 stainless steel with exposed surfaces satin finished. Door fabricated of EXTRA HEAVY 18 gauge fitted with tumbler lock. Spindle is continuous 1" diameter 18 gauge stainless steel tubing with plastic end caps. Unit accepts two rolls of 1500 sheet rolls.

### Note:

Unit comes standard with keyed alike lock to match all other Gamco accessories.

### Overall Dimensions:

$13\frac{3}{4}"$ W (349mm) x  $8\frac{1}{2}"$ H (216mm) x  $4\frac{1}{2}"$ D (114mm)

### Wall Opening:

$12\frac{1}{2}"$ W (318mm) x 7"H (179mm) x 4"D (102mm) min. depth

### Mounting Height:

30" (762mm) to the top of unit. Four (4) #10 x 1-1/2" phillips pan head sheet metal screws with anchors are provided by Gamco for installation