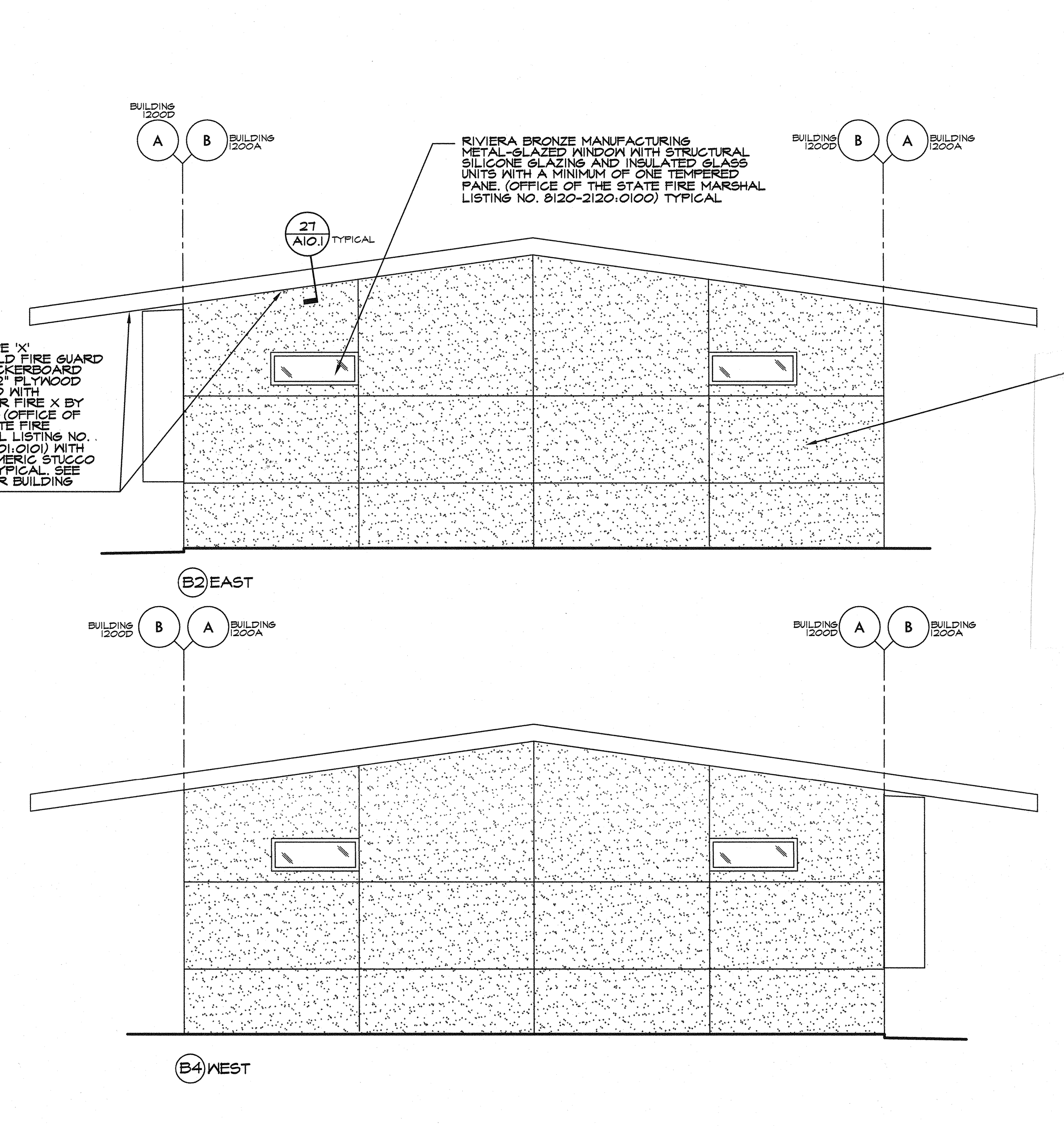
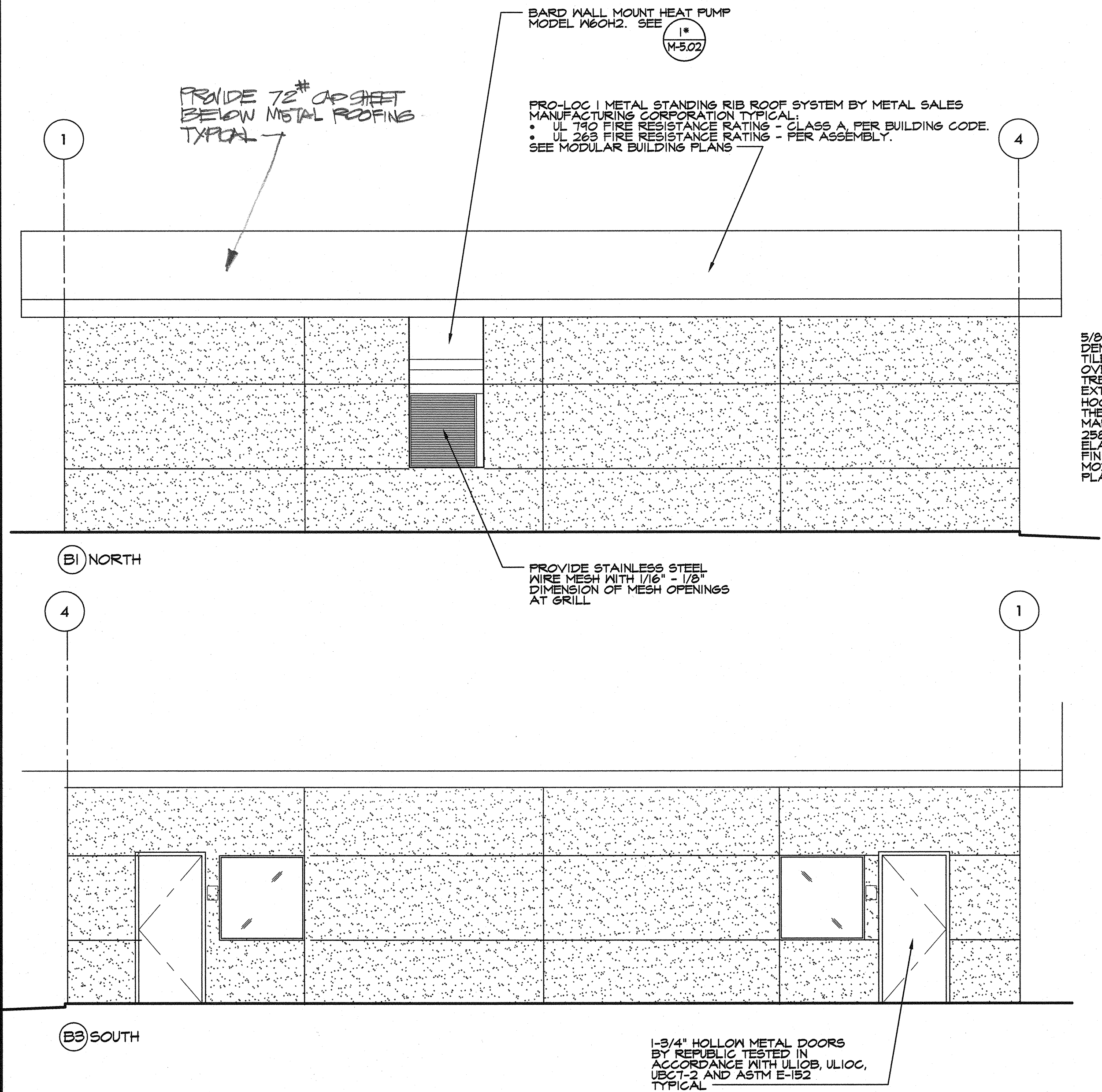


A BUILDING 1200B
BUILDING 1200C

REFER TO PG. APPROVED MODULAR BUILDING PLANS FOR TYPICAL NOTES



B BUILDING 1200A
BUILDING 1200D

REFER TO PG. APPROVED MODULAR BUILDING PLANS FOR TYPICAL NOTES

MIRROR ELEVATIONS

EXTERIOR ELEVATIONS

SCALE: 1/4" = 1'-0"

MARK	DATE	REVISIONS
△		
△		
△		

CHECK AND VERIFY ALL DIMENSIONS BEFORE PROCEEDING WITH THE WORK. REPORT DISCREPANCIES TO THE ARCHITECT. ALL CONSTRUCTION SHALL CONFORM TO THE C.B.C.

FOUR (4) MODULAR KINDERGARTEN CLASSROOMS
AT WOODROW WALLACE SCHOOL
3240 ERSKINE CREEK RD
FOR
KERNVILLE UNION SCHOOL DISTRICT
LAKE ISABELLA, KERN COUNTY, CALIFORNIA 93268

IDENTIFICATION STAMP	
DIV. OF THE STATE ARCHITECT	
OFFICE OF REGULATION SERVICES	
APPL. 03-116594	
FILE: 15-34	
AC: M	RS: S
DATE: JULY 04, 2008	
PTN: 63545-5	

ARCHITECT
SC
1601 NEW STINE ROAD, SUITE 280
BAKERSFIELD, CA 93309
PH: (661) 397-4377
FAX: (661) 397-4378
WWW.SCARCHITECT.COM

REGISTERED ARCHITECT
STEPHEN J. COON
No. C-16786
Exp. 12/31/2011
OFFICE

STEPHEN J. COON, NCARB, AIA, LEED® AP BD+C

EXTERIOR ELEVATIONS

JOB NO.	1201
DRAWN:	LLA
CHECKED:	SJC
DATE:	11/4/15

7.0
OF SHEETS