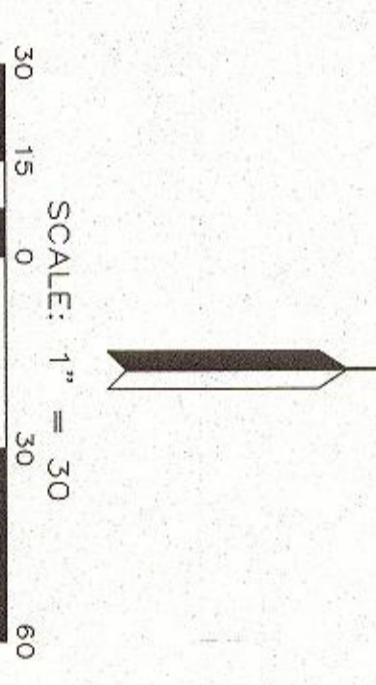
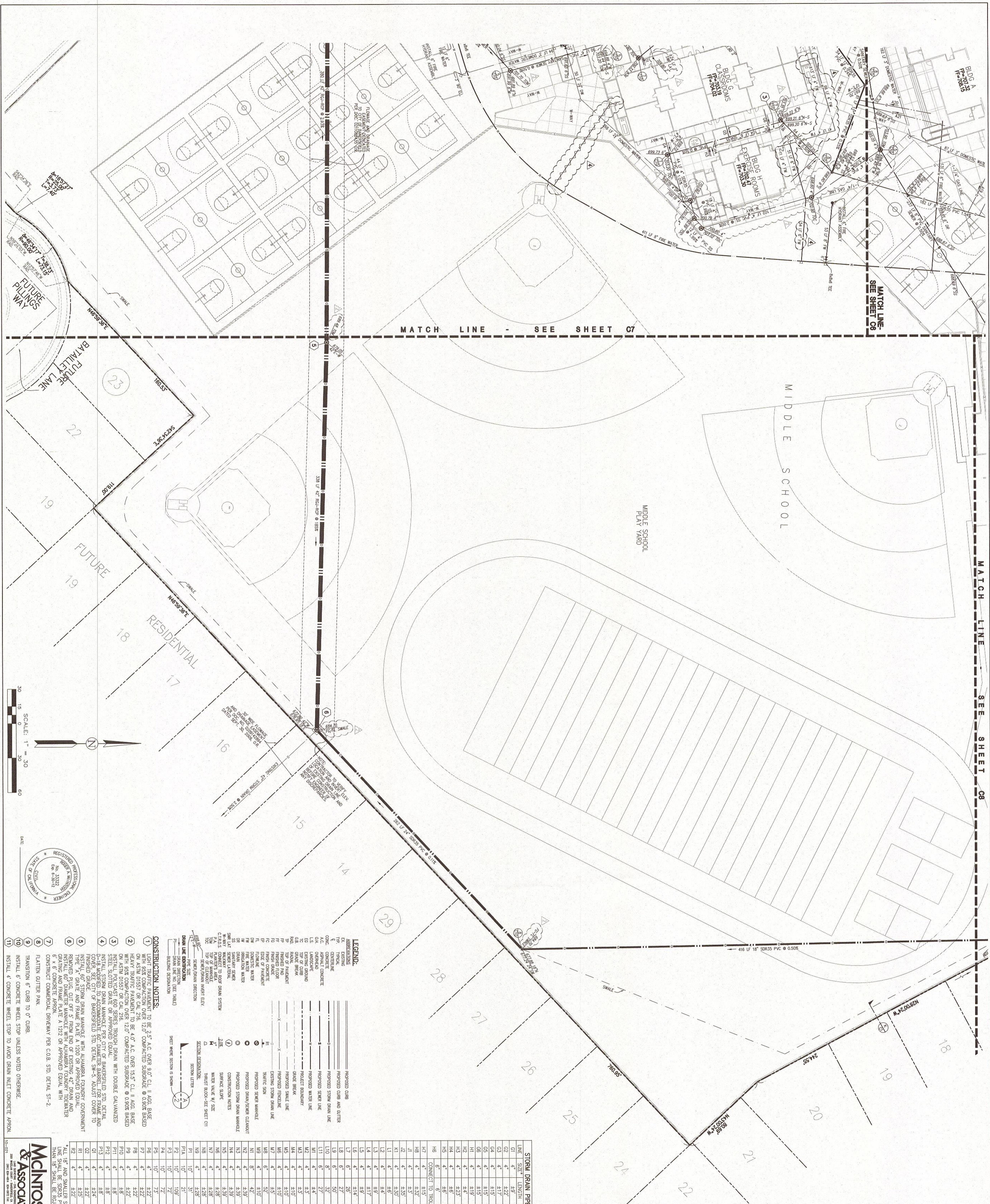


MATCH LINE - SEE SHEET C8

MATCH LINE - SEE SHEET C8

MATCH LINE - SEE SHEET C7



30' 15' SCALE: 1" = 30'

DATE: _____

REGISTERED PROFESSIONAL ENGINEER
DANIEL E. GRITZ
No. 41342
City of California

- CONSTRUCTION NOTES:**
- LIGHT TRAFFIC PAVEMENT TO BE 2.5" A.C. OVER 3.0" C.L. II AGG. BASE ON ASH 10577 OR CAL. 716 12.0" COMPACTED SUBGRADE @ 0.5% BASED HEAVY TRAFFIC PAVEMENT TO BE 4.0" A.C. OVER 15.5" C.L. II AGG. BASE ON ASH 10577 OR CAL. 716 12.0" COMPACTED SUBGRADE @ 0.5% BASED.
 - HEAVY TRAFFIC PAVEMENT TO BE 4.0" A.C. OVER 15.5" C.L. II AGG. BASE ON ASH 10577 OR CAL. 716 12.0" COMPACTED SUBGRADE @ 0.5% BASED.
 - INSTALL POLYCAST 600 SERIES THROUGH DRAIN WITH DOUBLE GALVANIZED STEEL SLOTTED GRATE OR APPROVED EQUAL.
 - CONSTRUCT COMMERCIAL DRAINWAY PER COB. STD. DETAIL ST-2 FLATTEN CUTTER PAN.
 - TRANSITION 6" CHIBB TO 0" CHIBB.
 - INSTALL 6" CONCRETE WHEEL STOP UNLESS NOTED OTHERWISE.
 - INSTALL 4" CONCRETE WHEEL STOP TO AVOID DRAIN INLET CONCRETE APRON.

LEGEND:

EX	EXISTING
PRO	PROPOSED
CONC.	CONCRETE
AP	ASPHALT
APP	APPROVED EQUAL
LS	LANDSCAPE
LSL	LANDSCAPE SLOPE
LSL2	LANDSCAPE SLOPE 2%
LSL3	LANDSCAPE SLOPE 3%
LSL4	LANDSCAPE SLOPE 4%
LSL5	LANDSCAPE SLOPE 5%
LSL6	LANDSCAPE SLOPE 6%
LSL7	LANDSCAPE SLOPE 7%
LSL8	LANDSCAPE SLOPE 8%
LSL9	LANDSCAPE SLOPE 9%
LSL10	LANDSCAPE SLOPE 10%
LSL11	LANDSCAPE SLOPE 11%
LSL12	LANDSCAPE SLOPE 12%
LSL13	LANDSCAPE SLOPE 13%
LSL14	LANDSCAPE SLOPE 14%
LSL15	LANDSCAPE SLOPE 15%
LSL16	LANDSCAPE SLOPE 16%
LSL17	LANDSCAPE SLOPE 17%
LSL18	LANDSCAPE SLOPE 18%
LSL19	LANDSCAPE SLOPE 19%
LSL20	LANDSCAPE SLOPE 20%
LSL21	LANDSCAPE SLOPE 21%
LSL22	LANDSCAPE SLOPE 22%
LSL23	LANDSCAPE SLOPE 23%
LSL24	LANDSCAPE SLOPE 24%
LSL25	LANDSCAPE SLOPE 25%
LSL26	LANDSCAPE SLOPE 26%
LSL27	LANDSCAPE SLOPE 27%
LSL28	LANDSCAPE SLOPE 28%
LSL29	LANDSCAPE SLOPE 29%
LSL30	LANDSCAPE SLOPE 30%
LSL31	LANDSCAPE SLOPE 31%
LSL32	LANDSCAPE SLOPE 32%
LSL33	LANDSCAPE SLOPE 33%
LSL34	LANDSCAPE SLOPE 34%
LSL35	LANDSCAPE SLOPE 35%
LSL36	LANDSCAPE SLOPE 36%
LSL37	LANDSCAPE SLOPE 37%
LSL38	LANDSCAPE SLOPE 38%
LSL39	LANDSCAPE SLOPE 39%
LSL40	LANDSCAPE SLOPE 40%
LSL41	LANDSCAPE SLOPE 41%
LSL42	LANDSCAPE SLOPE 42%
LSL43	LANDSCAPE SLOPE 43%
LSL44	LANDSCAPE SLOPE 44%
LSL45	LANDSCAPE SLOPE 45%
LSL46	LANDSCAPE SLOPE 46%
LSL47	LANDSCAPE SLOPE 47%
LSL48	LANDSCAPE SLOPE 48%
LSL49	LANDSCAPE SLOPE 49%
LSL50	LANDSCAPE SLOPE 50%

STOP DRAIN PIPE TABLE

LINE	SIZE	LENGTH	SLOPE
G1	4"	1.57'	C.I.R.D.S.
G2	4"	4.27'	C.I.R.D.S.
G3	4"	1.17'	C.I.R.D.S.
G4	4"	1.15'	C.I.R.D.S.
G5	4"	1.15'	C.I.R.D.S.
G6	4"	1.15'	C.I.R.D.S.
G7	4"	1.15'	C.I.R.D.S.
G8	4"	1.15'	C.I.R.D.S.
G9	4"	1.15'	C.I.R.D.S.
G10	4"	1.15'	C.I.R.D.S.
G11	4"	1.15'	C.I.R.D.S.
G12	4"	1.15'	C.I.R.D.S.
G13	4"	1.15'	C.I.R.D.S.
G14	4"	1.15'	C.I.R.D.S.
G15	4"	1.15'	C.I.R.D.S.
G16	4"	1.15'	C.I.R.D.S.
G17	4"	1.15'	C.I.R.D.S.
G18	4"	1.15'	C.I.R.D.S.
G19	4"	1.15'	C.I.R.D.S.
G20	4"	1.15'	C.I.R.D.S.
G21	4"	1.15'	C.I.R.D.S.
G22	4"	1.15'	C.I.R.D.S.
G23	4"	1.15'	C.I.R.D.S.
G24	4"	1.15'	C.I.R.D.S.
G25	4"	1.15'	C.I.R.D.S.
G26	4"	1.15'	C.I.R.D.S.
G27	4"	1.15'	C.I.R.D.S.
G28	4"	1.15'	C.I.R.D.S.
G29	4"	1.15'	C.I.R.D.S.
G30	4"	1.15'	C.I.R.D.S.
G31	4"	1.15'	C.I.R.D.S.
G32	4"	1.15'	C.I.R.D.S.
G33	4"	1.15'	C.I.R.D.S.
G34	4"	1.15'	C.I.R.D.S.
G35	4"	1.15'	C.I.R.D.S.
G36	4"	1.15'	C.I.R.D.S.
G37	4"	1.15'	C.I.R.D.S.
G38	4"	1.15'	C.I.R.D.S.
G39	4"	1.15'	C.I.R.D.S.
G40	4"	1.15'	C.I.R.D.S.
G41	4"	1.15'	C.I.R.D.S.
G42	4"	1.15'	C.I.R.D.S.
G43	4"	1.15'	C.I.R.D.S.
G44	4"	1.15'	C.I.R.D.S.
G45	4"	1.15'	C.I.R.D.S.
G46	4"	1.15'	C.I.R.D.S.
G47	4"	1.15'	C.I.R.D.S.
G48	4"	1.15'	C.I.R.D.S.
G49	4"	1.15'	C.I.R.D.S.
G50	4"	1.15'	C.I.R.D.S.

McINTOSH & ASSOCIATES

REGISTERED PROFESSIONAL ENGINEERS
DANIEL E. GRITZ
No. 41342
CITY OF CALIFORNIA

APR #003

SHEET #

C9

SHEET IDENTIFICATION NUMBER

FOR:

BAKERSFIELD CITY SCHOOL DISTRICT
1300 BAKER STREET
BAKERSFIELD CALIFORNIA 93305

NEW ELEMENTARY SCHOOL
8801 HIGHLAND KNOLLS DR
BAKERSFIELD, CALIFORNIA 93306

NEW MIDDLE SCHOOL
4115 VINELAND ROAD
BAKERSFIELD CALIFORNIA 93306

REVISIONS:

MARK	DATE	DESCRIPTION
05-16-12	Revision 2	
05-29-12	Revision 4	

ORDIZ MELBY
ARCHITECTS, INC.

5950 MING AVENUE
BAKERSFIELD, CALIFORNIA 93309
TELEPHONE (801) 832-2828
FACSIMILE (801) 832-2931

SITE 290

DANIEL E. GRITZ, P.E.
ARCHITECT C-14,728
WILLIAM J. MELBY, AIA
ARCHITECT C-16,885

DENVER E. GRITZ, P.E.
ARCHITECT C-14,728
WILLIAM J. MELBY, AIA
ARCHITECT C-16,885

IDENTIFICATION STAMP
OFFICE OF STATE SERVICES
APPL. #: 04-120271
FILE #: 150

AC: _____ PLS: _____ SS: _____
DATE: _____ P/N # 8331-112