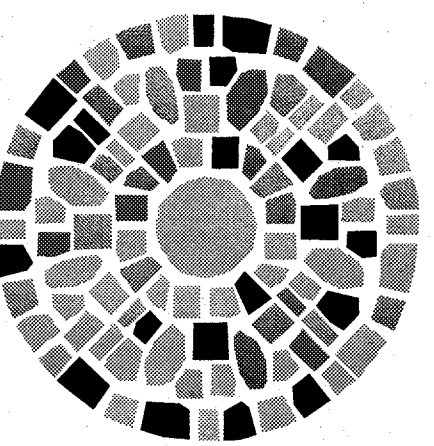
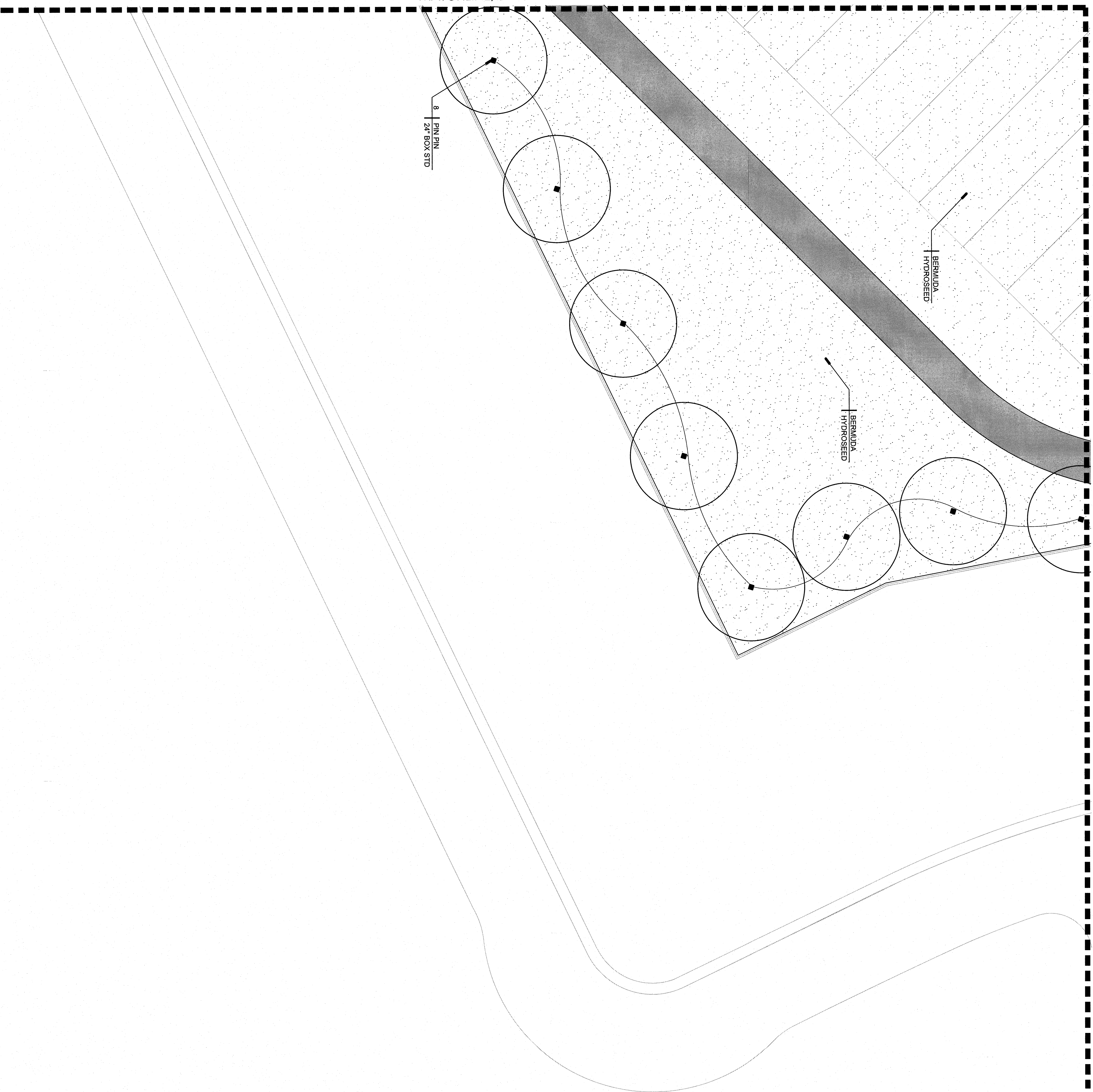
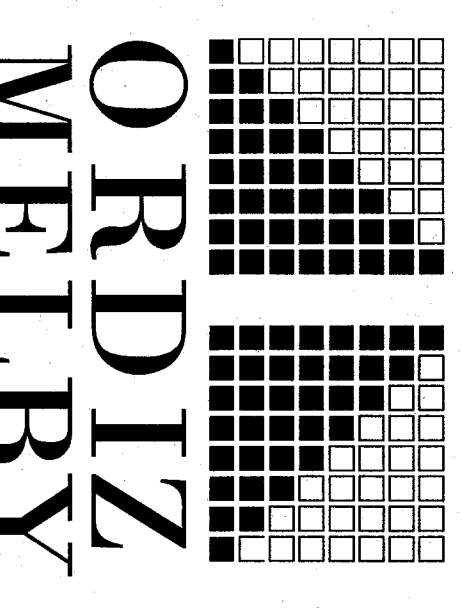


MATCHLINE, SEE SHEET H

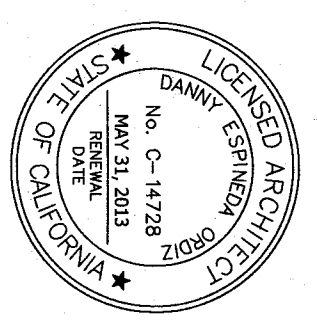
MATCHLINE, SEE SHEET F



**RIOS DESIGN STUDIO**  
 LANDSCAPE ARCHITECTURE & DESIGN  
 3805 ORA VISTA AVENUE  
 BAKERSFIELD, CALIFORNIA  
 93309  
 P: 661.835.9239  
 F: 661.835.9234



**ORDIZ MELBY ARCHITECTS, INC.**  
 5600 KING AVENUE SUITE 280  
 BAKERSFIELD, CALIFORNIA 93309  
 TELEPHONE (661) 832-5288  
 FACSIMILE (661) 832-4291



DANNY E. GORNZ, AIA  
 ARCHITECT C-14,728  
 WILLIAM J. MELBY, AIA  
 ARCHITECT C-16,835

IDENTIFICATION STAMP  
 DIVISION OF STATE ARCHITECT  
 OFFICE OF REGULATION SERVICES  
 APPL. #92-112027  
 FILE # 15-6  
 AC \_\_\_\_\_ PLS \_\_\_\_\_ SS \_\_\_\_\_  
 DATE \_\_\_\_\_  
 PIN# 4331-112

**NEW ELEMENTARY SCHOOL**  
 9801 HIGHLAND KNOLLS DR  
 BAKERSFIELD  
 CALIFORNIA  
 93306

**NEW MIDDLE SCHOOL**  
 4115 VINELAND ROAD  
 BAKERSFIELD  
 CALIFORNIA  
 93306

**FOR:**

**BAKERSFIELD CITY SCHOOL DISTRICT**  
 1300 BAKER STREET  
 BAKERSFIELD  
 CALIFORNIA  
 93305

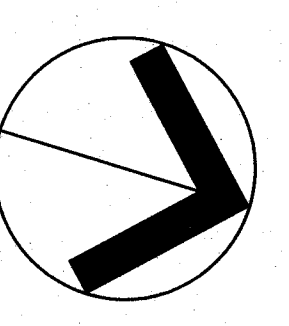
MARK	DATE	DESCRIPTION
△		
△		
△		
△		
△		

200 WALKER  
 BAKERSFIELD, CA 93305  
 200101244  
 1344-EL-D-G A (MULTIPURPOSE)-CD.dwg  
 DRAWN BY:  
 CHECKED BY:

CHECK AND VERIFY ALL DIMENSIONS BEFORE REPORT PROCEEDING WITH THE PROJECT. THE DRAWINGS, SEALS AND DESIGNS REPRESENTED ON THIS SHEET ARE THE PROPERTY OF ORDIZ MELBY ARCHITECTS, INC. AND ARE NOT TO BE REPRODUCED OR TRANSMITTED IN ANY FORM OR BY ANY MEANS, ELECTRONIC OR MECHANICAL, INCLUDING PHOTOCOPYING, RECORDING, OR BY ANY INFORMATION STORAGE AND RETRIEVAL SYSTEM, WITHOUT THE WRITTEN PERMISSION OF ORDIZ MELBY ARCHITECTS, INC. 2010

**SHEET TITLE**

**CONSTRUCTION LEGEND**  
 ROCK COBBLE PAVING, TYP.  
 REFER TO DETAILS F-8, G, SHEET L24.



SCALE: 1"=20'

**TREE AND TURF PLANTING PLAN**  
 SHEET IDENTIFICATION NUMBER  
**L24**